

CATALOG #: \_\_\_\_\_

Type: \_\_\_\_\_

PROJECT: \_\_\_\_\_

## FEATURES

- Durable steel housing
- Available as full-time AC powered unit or emergency unit with battery backup
- EM unit provides 90 minutes of emergency operation
- Ultra-bright, energy-efficient, long-life LEDs in red or green
- Fully automatic solid-state two rate charger on EM unit recharges battery in 24 hours
- Charge rate/power "ON" LED indicator light and push-to-test switch for mandated code compliance testing
- Unique design allows double face conversion in the field
- Removable directional indicators
- Self-diagnostic option performs monthly, biannual, and annual tests to ensure reliable operation and meets electrical and life safety codes

## ORDERING EXAMPLE: EXIT/STEEL - R - WHT - AC - OPTIONS - D

### ORDERING INFO

SERIES	LETTER COLOR	HOUSING COLOR	POWER OPTIONS
EXIT/STEEL	R Red G Green	BLK Black WHT Industry-standard white	AC AC operation EM AC operation with emergency battery backup

OPTIONS	VOLTAGE
SDT Self-diagnostic test <sup>[1]</sup>	D 120V/277V
PC1 Polycarbonate shield <sup>[2]</sup>	
WG Wireguard, white <sup>[3]</sup>	

## SPECIFICATIONS

- HOUSING – Durable, powder-coated 20-gauge steel construction.
- ELECTRICAL – Dual 120/277 voltage standard. 4.8V long life, maintenance-free, rechargeable NiCd battery when specified with EM power option.
- MOUNTING – Mounting canopy for top or end mount. Universal knockout pattern on back plate for wall mount.
- LISTINGS –
  - UL 924 standard as an exit light suitable for dry or damp locations (0°C - +50°C).
  - Meets NFPA 101 Life Safety Code, NEC, OSHA, Local and State Codes.
  - Certified to CEC under Title 20 Regulations.
- WARRANTY – 5-year limited warranty.

## NOTES

- <sup>1</sup> EM only.
- <sup>2</sup> Wall mount only. Ships separately. See page 2 for OPTIONS DETAILS.

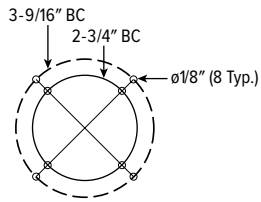
- <sup>3</sup> Wall mount only. Ships separately. See page 2 for OPTIONS DETAILS.

# EXIT/STEEL LED Steel Exit Light

## FIXTURE DETAILS

### BOLT CIRCLE PATTERN

Not to scale.



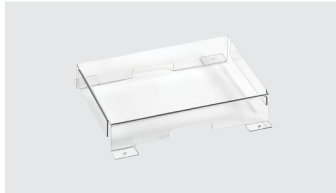
## ELECTRICAL INFORMATION

INPUT WATTS (W)		INPUT AMPS (A)	
120V	277V	120V	277V
3.8	3.8	0.034	0.020

## OPTIONS DETAILS

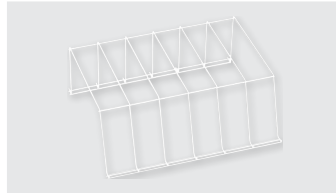
Wall mount only. Ships separately.

PC1



DIMENSIONS: 13-3/16" x 9-3/16" x 2-1/2"

WG



DIMENSIONS: 13-3/4" X 15-1/4" X 6"