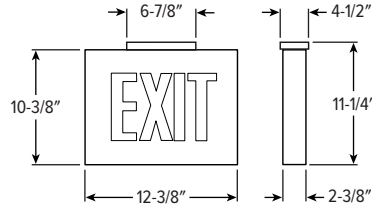


# EXIT/CHICAGO LED Chicago-Approved Exit Light



CATALOG #: \_\_\_\_\_

Type: \_\_\_\_\_

PROJECT: \_\_\_\_\_

## FEATURES

- Available as full-time AC powered unit or emergency unit with battery backup
- EXIT or STAIR sign illumination
- EM unit provides 90 minutes of emergency operation
- Ultra-bright, energy-efficient, long-life LEDs
- Fully automatic solid-state two rate charger on EM unit recharges battery in 24 hours
- Charge rate/power "ON" LED indicator light and push-to-test switch for mandated code compliance testing

## SPECIFICATIONS

- HOUSING** – Durable, powder-coated 20-gauge steel construction.
- LENS** – Open face glass panel with silk-screened letters.
- ELECTRICAL** – Universal 120-277 voltage. 4.8V long life, maintenance-free, rechargeable NiCd battery when specified with EM power option.
- MOUNTING** – Mounting canopy for top or end mount. Universal knockout pattern on back plate for wall mount.
- LISTINGS** –
  - UL 924 standard as an exit light suitable for dry or damp locations (0°C - +50°C).
  - Meets NFPA 101 Life Safety Code, NEC, OSHA, Local and State Codes.
  - Meets city of Chicago requirements.
  - Certified to CEC under Title 20 Regulations.
- WARRANTY** – 5-year limited warranty.

## ORDERING EXAMPLE: EXIT/CHICAGO - SF - WHT - AC - NA - OPTIONS - D

### ORDERING INFO

SERIES	NUMBER OF FACES	HOUSING COLOR	POWER OPTIONS	DIRECTIONAL ARROWS <sup>[1]</sup>
EXIT/CHICAGO	SF Single face DF Double face	BLK Black WHT Industry-standard white	AC AC operation EM AC operation with emergency battery backup	<b>EXIT SIGNAGE</b> NA No arrows DA Double arrows RA Right arrow <sup>[2]</sup> LA Left arrow <sup>[3]</sup> LARA Left/Right arrow <sup>[4]</sup>
				<b>STAIR SIGNAGE</b> SWNA Stairs no arrow SWDA Stairs double arrows SWRA Stairs right arrow <sup>[5]</sup> SWLA Stairs left arrow <sup>[6]</sup> SWLARA Stairs left/right arrow <sup>[7]</sup>

OPTIONS <sup>[8]</sup>	VOLTAGE
PC2 Polycarbonate shield WG Wireguard, white	D 120 - 277V

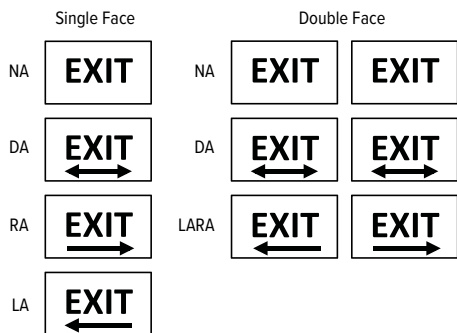
## NOTES

- These units come standard with no directional arrows. If directional arrows are required for your application, it must be specified on all orders. See page 2 for FIXTURE DETAILS.
- Single face only.
- Single face only.
- Double face only.
- Single face only.
- Single face only.
- Double face only.
- Wall mount only. Ships separately. See page 2 for OPTIONS DETAILS.

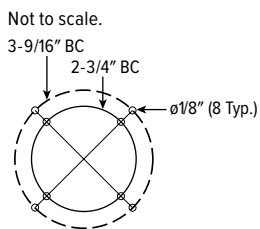
# EXIT/CHICAGO LED Chicago-Approved Exit Light

## FIXTURE DETAILS

### DIRECTIONAL ARROWS



### WALL MOUNT BOLT CIRCLE PATTERN



## FIXTURE STYLES

### EXIT SIGNAGE



### STAIR SIGNAGE



## ELECTRICAL INFORMATION

INPUT WATTS (W)		INPUT AMPS (A)	
120V	277V	120V	277V
5.0	5.0	0.10	0.05

## OPTIONS DETAILS

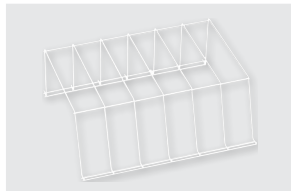
Wall mount only. Ships separately.

### PC2



DIMENSIONS: 15" x 22" x 7-3/4"

### WG



DIMENSIONS: 13-3/4" x 15-1/4" x 6"