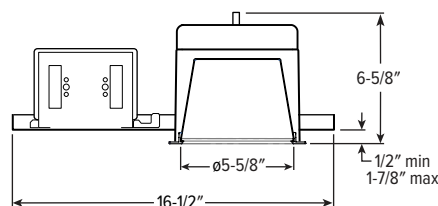
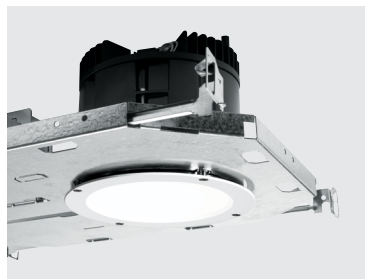


# V6DR PoE | tunable **WHITE** 6" Vandal-Resistant Downlight – Round



CATALOG #: \_\_\_\_\_

TYPE: \_\_\_\_\_

PROJECT: \_\_\_\_\_



## FEATURES

- Deliver scalable, data-driven smart buildings with PoE-enabled fixtures and controls
- Accepted by the New York State Office of Mental Health for use in inpatient facilities
- Anti-ligature design with tamper-resistant fasteners

## SPECIFICATIONS

- HOUSING** – Die-cast aluminum trim housing with forged aluminum heat sink. Galvanized steel splice compartment with driver mounting plate/enclosure. Swing-out mounting arms field adjust for ceiling thickness from 1/2" – 1-7/8" max. TC option required for ceiling thicknesses greater than 1-1/4".
- LENSED TRIM** – Die-cast aluminum frame with 1/8" micro-prismatic, polycarbonate lens with 1/8" clear polycarbonate underlay. Trim is secured with four stainless steel, tamper-resistant screws.
- ELECTRICAL** – High-performance Class 2 LED array. Modular quick-connect plug for easy field-connection of LED light assembly to driver. Reported L70>50,000 hours. Low-voltage DC fixture, to be fed by Class 2 power supply. Tunable White products use LEDs of multiple CCTs and may produce a perceptibly different shade of white from single-CCT products at the same CCT. All CCTs are within 3 MacAdam ellipses.
- MOUNTING** – Recessed. 20 ga. galvanized steel mounting pan for new construction or IC-rated enclosure.
- LISTINGS** –
  - cCSAus conforms to UL STD 1598; Certified to CAN/CSA STD C22.2 No. 250.0 for dry and damp locations. LED light assembly conforms to UL 2108 for remote installation.
  - Suitable for wet location under covered ceiling when specified with WET/CC option.
  - IC-rated for direct contact with insulation when specified with I Mounting Type.
  - ISO 5, Class 100 rated.
  - City of Chicago Environmental Air approved when specified with CP option.
  - Complies with ASTM-E283 when specified with ATH option.
  - RoHS compliant.
  - Complies with the Buy American Act and other federal regulations. Request certification at [hew.com/baa](http://hew.com/baa).
- WARRANTY** – 5-year limited warranty, see [hew.com/warranty](http://hew.com/warranty).

## SYSTEM REQUIREMENTS

- PoE-ready luminaires are connected to building power systems through network integration and require other components for complete PoE lighting system
- For additional PoE info, see [hew.com/poe](http://hew.com/poe)

ORDERING EXAMPLE: **V6DR - P14/835 - OPTIONS - POE PR - LW - OF - WH - TRIM OPTIONS - N - F1**  
HOUSING TRIM MOUNT.

## HOUSING

SERIES	LUMENS <sup>[1]</sup>	CRI	CCT	OPTIONS	CONTROL <sup>[2]</sup>
V6DR	P10 1,000lm	8 80	27 2700K	ATH Airtight construction	POE PR Power over Ethernet-ready
	P14 1,400lm	9 90 <sup>[3]</sup>	30 3000K	CP Chicago plenum (CCEA) <sup>[4]</sup>	
	P20 2,000lm		35 3500K	TC Thick ceiling construction <sup>[5]</sup>	
	P27 2,700lm		40 4000K		
	P38 3,800lm		50 5000K		
	P53 5,300lm		TW Tunable white (80 CRI, 2700K–5000K)		

## TRIM

TRIM TYPE	DISTRIBUTION <sup>[6]</sup>	FLANGE TYPE	REFLECTOR FINISH	TRIM OPTIONS
L Flush lens	W Wide <sup>[7]</sup>	OF 1/2" standard flange	CS Clear semi-specular powder coat	MWT Textured white trim flange <sup>[11]</sup>
R Regressed lens	55° Flush		WH White texture powder coat	IP IP65 rated trim
	55° Regressed		BL Black texture powder coat	PD Diffuse 1/8" polycarbonate lens <sup>[12]</sup>
	M Medium <sup>[8]</sup>		MB Black texture splay with white flange <sup>[10]</sup>	WET/CC Wet location, covered ceiling listed
	35° Flush			AM Anti-microbial <sup>[13]</sup>
	35° Regressed			
	N Narrow <sup>[9]</sup>			
	25° Flush			
	25° Regressed			

## MOUNTING

MOUNTING TYPE <sup>[14]</sup>	MOUNTING HARDWARE <sup>[15]</sup>
N Open pan for new construction	F1 Integral 2-position fixed pan bracket, universal bar hanger included <sup>[17]</sup>
I IC-rated enclosure for new construction <sup>[16]</sup>	BA1 Adjustable butterfly pan bracket, bar hanger not included <sup>[18]</sup>
	CA1 Adjustable caterpillar pan bracket, universal bar hanger included <sup>[19]</sup>

## ACCESSORIES

TPTX-10 TOOL T10 torx bit 1/4" drive tamper-resistant tool. <sup>[20]</sup>

## NOTES

- Static white lumen output based on L trim type, W distribution, WH finish, 80 CRI/3500K CCT. See page 2 for FIXTURE PERFORMANCE DATA.
- For additional PoE connection details, consult factory.
- Extended lead times may apply. Consult factory for availability. Not available with Tunable White.
- I Mounting Type required.
- Required for ceiling thicknesses greater than 1-1/4"
- Beam angle based on WH reflector finish.
- Not available with P53 lumen package when specified with tunable white.
- Not available with P38 and P53 lumen packages.
- Not available with P38 and P53 lumen packages.
- R Trim Type only. Not available with MWT.
- Not available with WH Reflector Finish or L Trim Type.
- W distribution only.
- WH and BL Reflector Finishes only.
- Mounting hardware required, ordered separately, see MOUNTING HARDWARE ordering info. See page 3 for MOUNTING TYPE DETAILS.
- Additional mounting hardware options available. See page 4 for MOUNTING HARDWARE DETAILS.
- P10 and P14 lumen packages only. P20 available, W distribution only.
- I Mounting requires external brackets.
- N Mounting Type only.
- N Mounting Type only.
- Tamper-resistant tool must be ordered separately. Please specify quantity required per project.



# V6DR PoE | tunable WHITE

## 6" Vandal-Resistant Downlight – Round

### FIXTURE PERFORMANCE DATA

#### STATIC WHITE

##### FLUSH LENS TRIM TYPE

	DIST.	DELIVERED LUMENS	WATTAGE	EFFICACY (lm/W)
P10	W	988	11.5	85.9
	M	1162	11.5	101.0
	N	1161	11.5	101.0
P14	W	1398	17.5	79.9
	M	1644	17.5	93.9
	N	1643	17.5	93.9
P20	W	1986	23.2	85.6
	M	2336	23.2	100.7
	N	2335	23.2	100.6
P27	W	2735	34.0	80.4
	M	3216	34.0	94.6
	N	3214	34.0	94.5
P38	W	3808	46.6	81.7
	M	-	-	-
	N	-	-	-
P53	W	5261	69.0	76.2
	M	-	-	-
	N	-	-	-

#### TUNABLE WHITE

##### FLUSH LENS TRIM TYPE

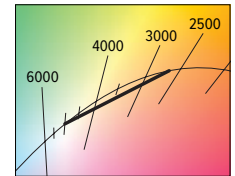
	DIST.	DELIVERED LUMENS	WATTAGE	EFFICACY (lm/W)
P10	W	900	11.6	77.6
	M	1058	11.6	91.2
	N	1058	11.6	91.2
P14	W	1435	17.5	82.0
	M	1688	17.5	96.5
	N	1687	17.5	96.4
P20	W	1917	22.6	84.8
	M	2255	22.6	99.8
	N	2253	22.6	99.7
P27	W	2799	34.6	80.9
	M	3292	34.6	95.1
	N	3290	34.6	95.1
P38	W	3339	42.5	78.6
	M	-	-	-
	N	-	-	-
P53	W	-	-	-
	M	-	-	-
	N	-	-	-

#### MULTIPLIER TABLES

COLOR TEMPERATURE			
	CCT	LUMENS	
		STANDARD	TUNABLE WHITE
80 CRI	2700K	0.92	0.83
	3000K	0.98	1.00
	3500K	1.00	0.99
	4000K	1.01	1.00
	5000K	1.02	0.98
90 CRI	2700K	0.76	-
	3000K	0.79	-
	3500K	0.82	-
	4000K	0.84	-
	5000K	0.88	-

TRIM	
CATALOG NUMBER	CONVERSION FACTOR
PD	0.85

REFLECTOR FINISH	
CATALOG NUMBER	CONVERSION FACTOR
WH	1.00
BL	0.79
CS	0.98



- Photometrics tested in accordance with IESNA LM-79. Results based on L trim type, W distribution, WH finish, and 25°C ambient temperature. Static white based on 80 CRI/3500K CCT. Tunable white based on 80 CRI/4000K CCT. Actual performance may vary +/-5%.
- Use multiplier tables to calculate additional options.

#### REGRESSED LENS TRIM TYPE

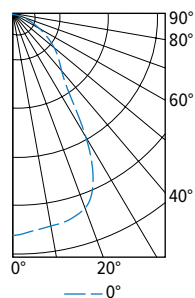
	DIST.	DELIVERED LUMENS	WATTAGE	EFFICACY (lm/W)
P10	W	926	11.5	80.5
	M	1142	11.5	99.3
	N	1161	11.5	101.0
P14	W	1310	17.5	74.9
	M	1616	17.5	92.3
	N	1643	17.5	93.9
P20	W	1862	23.2	80.3
	M	2296	23.2	99.0
	N	2335	23.2	100.6
P27	W	2564	34.0	75.4
	M	3162	34.0	93.0
	N	3215	34.0	94.6
P38	W	3570	46.6	76.6
	M	-	-	-
	N	-	-	-
P53	W	4932	69.0	71.5
	M	-	-	-
	N	-	-	-

#### REGRESSED LENS TRIM TYPE

	DIST.	DELIVERED LUMENS	WATTAGE	EFFICACY (lm/W)
P10	W	844	11.6	72.8
	M	1041	11.6	89.7
	N	1058	11.6	91.2
P14	W	1345	17.5	76.9
	M	1659	17.5	94.8
	N	1687	17.5	96.4
P20	W	1797	22.6	79.5
	M	2217	22.6	98.1
	N	2254	22.6	99.7
P27	W	2624	34.6	75.8
	M	3236	34.6	93.5
	N	3291	34.6	95.1
P38	W	3130	42.5	73.6
	M	-	-	-
	N	-	-	-
P53	W	-	-	-
	M	-	-	-
	N	-	-	-

### PHOTOMETRY

V6DR-P14/835-POE PR-LW-OF-WH Total Luminaire Output: 1398 lumens; 17.5 Watts | Efficacy: 79.9 lm/W | 80 CRI; 3500K CCT



VERTICAL ANGLE	HORIZONTAL ANGLE	
	0°	ZONAL LUMENS
0	890	
5	876	83
15	855	241
25	737	331
35	377	245
45	252	194
55	170	152
65	95	95
75	42	45
85	9	11
90	1	

LUMEN SUMMARY	ZONE	LUMENS	% FIXTURE
	0 - 40	900	64
	0 - 60	1247	89
	0 - 90	1398	100
	0 - 180	1398	100



H.E. Williams, Inc.

Carthage, Missouri

www.hew.com

417-358-4065

Designed and Manufactured in the USA

Information contained herein is subject to change without notice.

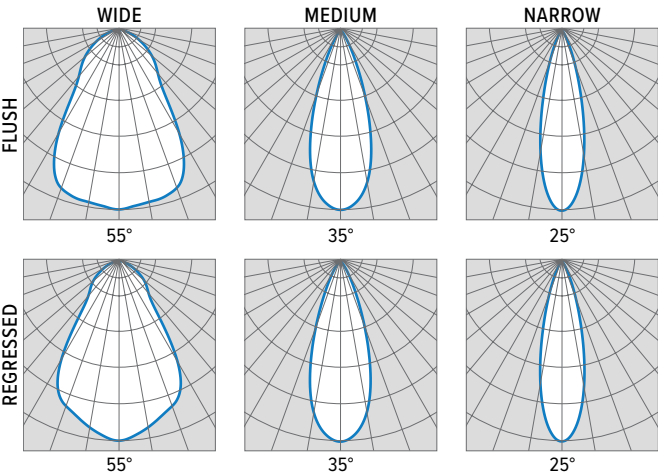
REV.11/10/23.LA

Downlights

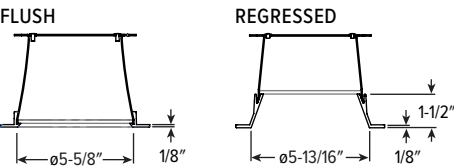
Page 2 of 4

# V6DR PoE | tunable **WHITE**

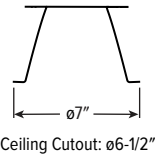
## 6" Vandal-Resistant Downlight – Round



### TRIM TYPE DETAILS



### FLANGE TYPE DETAILS

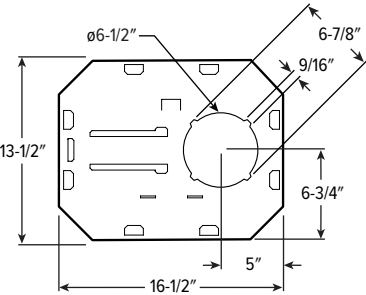


### REFLECTOR FINISH DETAILS

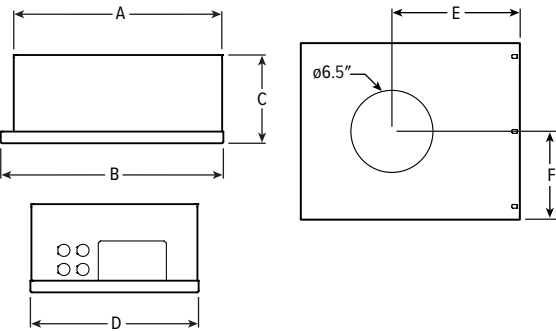


### MOUNTING TYPE DETAILS

#### NEW CONSTRUCTION



#### IC-RATED

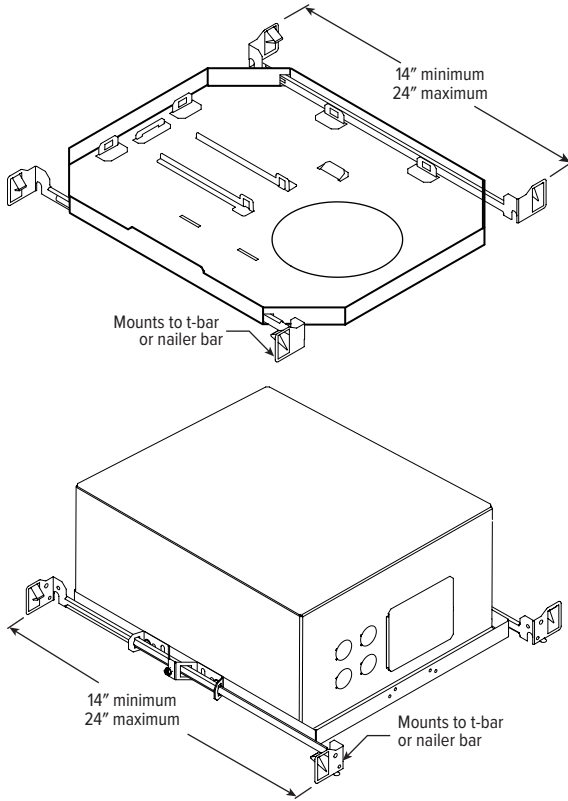


LUMENS	LENGTH					
	A	B	C	D	E	F
P10 - P20	15-3/16"	16"	6-3/8"	12-1/8"	9-1/2"	6-1/16"

# V6DR PoE | tunable **WHITE** 6" Vandal-Resistant Downlight – Round

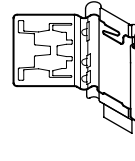
## MOUNTING HARDWARE DETAILS

**F1** Integral 2-position fixed pan bracket, universal bar hanger included

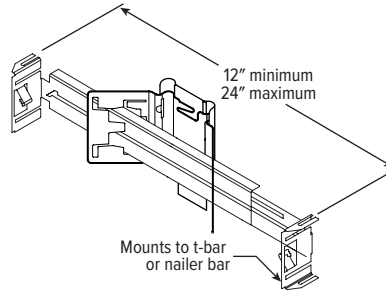


F1 with I Mounting Type

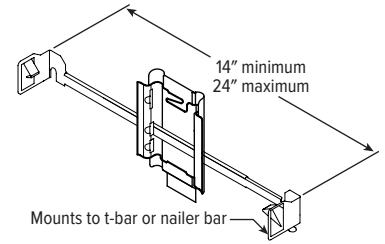
**BA1** Adjustable butterfly pan bracket, bar hanger not included (N Mounting Type only)



**BA2** Adjustable butterfly pan bracket, heavy-duty universal bar hanger included (N Mounting Type only)



**CA1** Adjustable caterpillar pan bracket, universal bar hanger included (N Mounting Type only)



**CA2** Adjustable caterpillar pan bracket, t-bar hanger included (N Mounting Type only)

