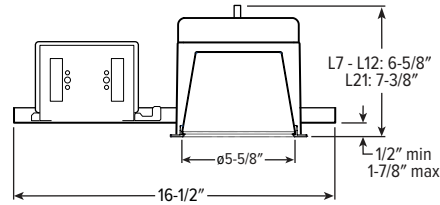
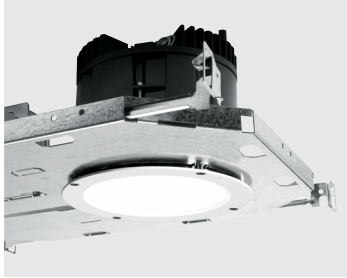


V6DR dim to **WARM** 6" Vandal-Resistant Downlight – Round



CATALOG #: _____

TYPE: _____

PROJECT: _____



ORDERING EXAMPLE: **V6DR - TL - L12/9DW - OPTIONS - DIM1 - UNV - LW - OF - CS - TRIM OPTIONS - N - F1**

HOUSING TRIM MOUNT

HOUSING

SERIES	LUMENS ^[1]	COLOR	OPTIONS	CONTROL	VOLTAGE
V6DR	L7 700lm L12 1,200lm L21 2,100lm	9DW Dim to warm (95 CRI, 1800K – 3000K)	ATH Airtight construction F Fuse CP Chicago plenum (CCEA) ^[2] EM/7W 7-watt emergency battery ^[3] EM/10W 10-watt emergency battery ^[4] SDT Stepdown transformer ^[5] TC Thick ceiling construction ^[6]	DIM1 1% dimming driver 0-10V signal to control dimming and CCT) LUT Lutron Ecosystem enabled ^[7]	UNV 120-277V 347 347V ^[8]

TRIM

TRIM TYPE	DISTRIBUTION ^[9]	FLANGE TYPE	REFLECTOR FINISH	TRIM OPTIONS
L Flush lens R Regressed lens	W Wide 55° Flush 55° Regressed M Medium 35° Flush 35° Regressed N Narrow 25° Flush 25° Regressed	OF 1/2" standard flange	CS Clear semi-specular powder coat WH White texture powder coat BL Black texture powder coat MB Black texture splay with white flange ^[10]	MWT Textured white trim flange ^[11] IP IP65 rated trim PD Diffuse 1/8" polycarbonate lens ^[12] WET/CC Wet location, covered ceiling listed AM Anti-microbial ^[13]

MOUNTING

MOUNTING TYPE ^[14]	MOUNTING HARDWARE ^[15]
N Open pan for new construction I IC-rated enclosure for new construction ^[16]	F1 Integral 2-position fixed pan bracket, universal bar hanger included ^[17] BA1 Adjustable butterfly pan bracket, bar hanger not included ^[18] CA1 Adjustable caterpillar pan bracket, universal bar hanger included ^[19]

ACCESSORIES

TPTX-10 TOOL T10 torx bit 1/4" drive tamper-resistant tool. ^[20]

NOTES

- ¹ Lumen output based on L trim type, W distribution, WH finish, 95 CRI/3000K CCT. Actual performance may vary +/-5%. See page 2 for FIXTURE PERFORMANCE DATA.
- ² I Mounting Type required.
- ³ Specify CEC in the option code when California Energy Commission regulations are required.
- ⁴ Specify CEC in the option code when California Energy Commission regulations are required.
- ⁵ May be required for 347V, see product builder at hew.com/product-builder.
- ⁶ Required for ceiling thicknesses greater than 1-1/4".
- ⁷ Not available with I Mounting Type.
- ⁸ Not available with EM batteries.
- ⁹ Beam angle based on CS or WH reflector finish.
- ¹⁰ R Trim Type only. Not available with MWT.
- ¹¹ Not available with WH Reflector Finish or L Trim Type.
- ¹² W distribution only.
- ¹³ WH and BL Reflector Finishes only.
- ¹⁴ Mounting hardware required, ordered separately, see MOUNTING HARDWARE ordering info. See page 4 for MOUNTING TYPE DETAILS.
- ¹⁵ Additional mounting hardware options available. See page 4 for MOUNTING HARDWARE DETAILS.
- ¹⁶ L12 lumen package max. Not available with EM batteries.
- ¹⁷ I Mounting requires external brackets.
- ¹⁸ N Mounting Type only.
- ¹⁹ N Mounting Type only.
- ²⁰ Tamper-resistant tool must be ordered separately. Please specify quantity required per project.



V6DR dim to WARM

6" Vandal-Resistant Downlight – Round

FEATURES

- Mimic the comfortable, welcoming glow of incandescents with warm-dimming technology
- Ideal for schools, behavioral health facilities, correctional institutions, and other vandal-prone areas
- Anti-ligature design with tamper-resistant fasteners
- Accepted by the New York State Office of Mental Health for use in inpatient facilities
- IP65-rated die-cast trim includes easy-to-clean flush lens
- Beam angles ranging from 25° narrow to 55° wide for tailored performance
- Die-cast trim choices include flush or regressed lens
- Contemporary design provides glare-free illumination for a soft ceiling appearance
- Easily adjust mounting arms below ceiling to adapt to a range of ceiling thicknesses

SPECIFICATIONS

- HOUSING** – Die-cast aluminum trim housing with forged aluminum heat sink. Galvanized steel splice compartment with driver mounting plate/enclosure. Swing-out mounting arms field adjust for ceiling thickness from 1/2" – 1-7/8" max. TC option required for ceiling thicknesses greater than 1-1/4".
- LENSED TRIM** – Die-cast aluminum frame with 1/8" micro-prismatic, polycarbonate lens with 1/8" clear polycarbonate underlay. Trim is secured with four stainless steel, tamper-resistant screws.
- ELECTRICAL** – High-performance Class 2 C.O.B. LED array. Modular quick-connect plug for easy field-connection of LED light assembly to driver. Reported L70>55,000 hours. Reported L90>55,000 hours. Estimated L70 = 200,000 hours.
- MOUNTING** – Recessed. 20 ga. galvanized steel mounting pan for new construction or IC-rated enclosure.
- LISTINGS** –
 - cCSAus conforms to UL STD 1598; Certified to CAN/CSA STD C22.2 No. 250.0 for dry and damp locations. LED light assembly conforms to UL 2108 for remote installation.
 - Suitable for wet location under covered ceiling when specified with WET/CC option.
 - IC-rated for direct contact with insulation when specified with I Mounting Type.
 - ISO 5, Class 100 rated.
 - City of Chicago Environmental Air approved when specified with CP option.
 - Complies with ASTM-E283 when specified with ATH option.
 - RoHS compliant.
 - Complies with the Buy American Act and other federal regulations. Request certification at hew.com/baa.
- WARRANTY** – 5-year limited warranty, see hew.com/warranty.

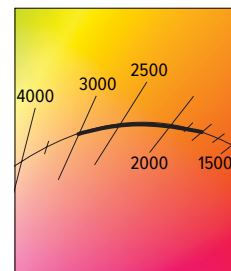
FIXTURE PERFORMANCE DATA

FLUSH LENS TRIM TYPE

	DIST.	DELIVERED LUMENS	CCT AT 100% (FULL OUTPUT)	CCT AT 1% (FULL DIM)	WATTAGE	EFFICACY (lm/W)
L7	W	680	3000K	1800K	14.0	49
	M	733			14.0	52
	N	738			14.0	53
L12	W	1192			23.4	51
	M	1285			23.4	55
	N	1293			23.4	55
L21	W	1953			37.7	52
	M	2101			37.7	56
	N	2118			37.7	56

REGRESSED LENS TRIM TYPE

	DIST.	DELIVERED LUMENS	CCT AT 100% (FULL OUTPUT)	CCT AT 1% (FULL DIM)	WATTAGE	EFFICACY (lm/W)
L7	W	659	3000K	1800K	14.0	47
	M	713			14.0	51
	N	719			14.0	51
L12	W	1154			23.4	49
	M	1250			23.4	53
	N	1260			23.4	54
L21	W	1890			37.7	50
	M	2048			37.7	54
	N	2064			37.7	55



- Photometrics tested in accordance with IESNA LM-79. Results based on L trim type, W distribution, WH finish, 95 CRI/3000K CCT, wattage for 120V input, and 25°C ambient temperature. Actual performance may vary +/-5%.
- To calculate lumen output in emergency mode, multiply the battery wattage by the efficacy.
- Use multiplier table to calculate additional options.

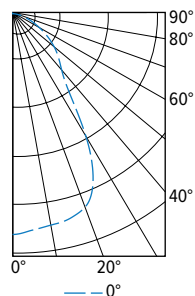
MULTIPLIER TABLE

TRIM	
CATALOG NUMBER	CONVERSION FACTOR
PD	0.85

	REFLECTOR FINISH	
	CATALOG NUMBER	CONVERSION FACTOR
R TRIM	WH	1.00
	BL	0.79
	CS	0.98

PHOTOMETRY

V6DR-L12/9DW-DIM1-UNV-LW-OF-WH Total Luminaire Output: 1192 lumens; 23.4 Watts | Efficacy: 50.9 lm/W | 95 CRI; 3000K CCT



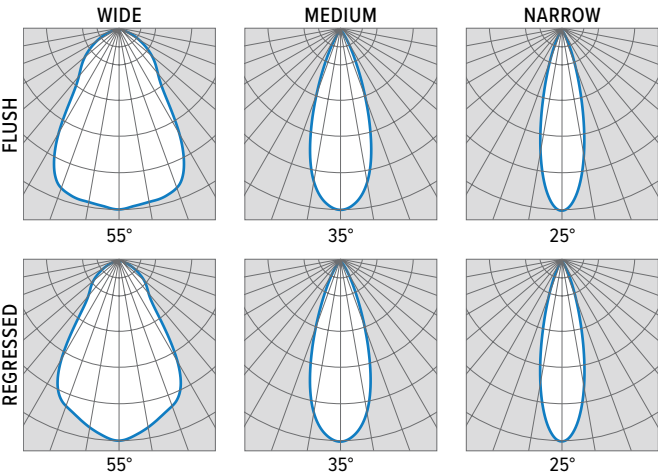
	VERTICAL ANGLE	HORIZONTAL ANGLE	ZONAL LUMENS
		0°	
CANDLEPOWER DISTRIBUTION	0	758	
	5	746	71
	15	728	205
	25	628	282
	35	321	209
	45	215	166
	55	145	130
	65	81	81
	75	36	39
	85	8	9
	90	0	

LUMEN SUMMARY	ZONE	LUMENS	% FIXTURE
	0 - 40	767	64
	0 - 60	1063	89
	0 - 90	1192	100
	0 - 180	1192	100

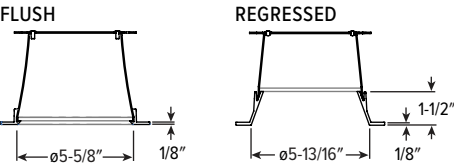


V6DR

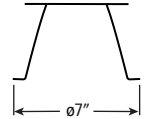
dim to **WARM**
 6" Vandal-Resistant Downlight – Round



TRIM TYPE DETAILS



FLANGE TYPE DETAILS



Ceiling Cutout: $\phi 6-1/2"$

REFLECTOR FINISH DETAILS

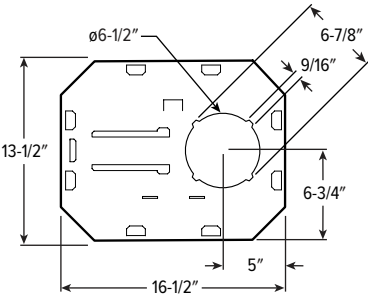


V6DR dim to WARM

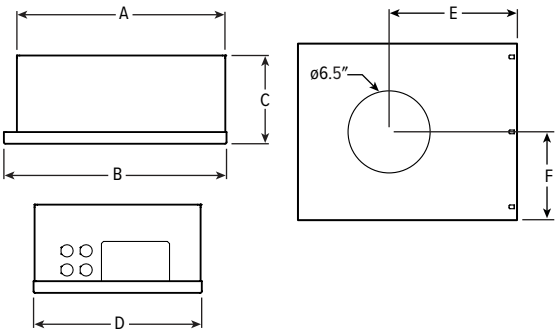
6" Vandal-Resistant Downlight – Round

MOUNTING TYPE DETAILS

NEW CONSTRUCTION



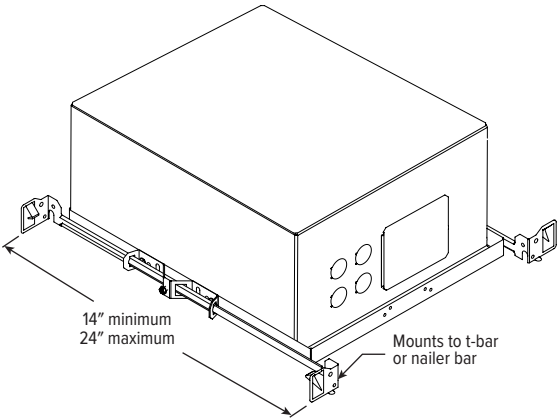
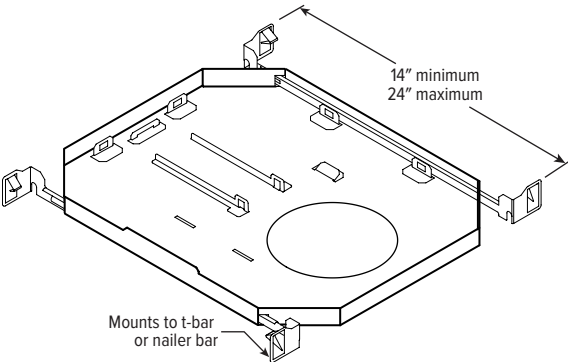
IC-RATED



LUMENS	LENGTH					
	A	B	C	D	E	F
L7 - L12	15-3/16"	16"	6-3/8"	12-1/8"	9-1/2"	6-1/16"

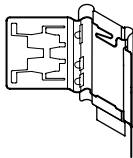
MOUNTING HARDWARE DETAILS

F1 Integral 2-position fixed pan bracket, universal bar hanger included

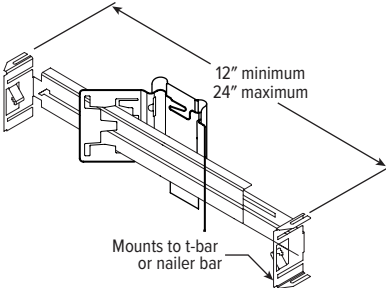


F1 with I Mounting Type

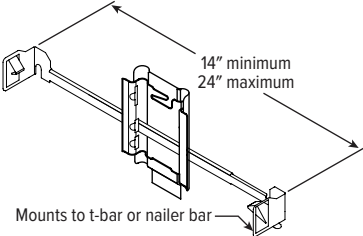
BA1 Adjustable butterfly pan bracket, bar hanger not included (N Mounting Type only)



BA2 Adjustable butterfly pan bracket, heavy-duty universal bar hanger included (N Mounting Type only)



CA1 Adjustable caterpillar pan bracket, universal bar hanger included (N Mounting Type only)



CA2 Adjustable caterpillar pan bracket, t-bar hanger included (N Mounting Type only)

