

CATALOG #: \_\_\_\_\_

Type: \_\_\_\_\_

PROJECT: \_\_\_\_\_



## FEATURES

- Attractive, architectural details are captured in this compact suspended LED luminaire
- Edgelit frosted acrylic and glowing perforated elements make a dramatic design statement
- Precision uplight optics provide soft, uniform indirect illumination
- Designed for stand-alone and continuous row-mount applications
- Made Right Here® in the USA

## SPECIFICATIONS

- HOUSING** – Extruded aluminum with milled aluminum end caps.
- SHIELDING** – Extruded frosted acrylic uplight lens with diffuse sand blasted acrylic edgelit panels.
- FINISH** – Textured matte white polyester TGIC powder coat bonded to phosphate-free, multi-stage pretreated metal. All parts painted after fabrication to facilitate installation, increase efficiency, and inhibit corrosion.
- ELECTRICAL** – High-quality mid-power LED boards. L70 >72,000 hours per IES TM-21. See fixture performance data for lumen maintenance.
- MOUNTING** – Suspended. 1/16" diameter adjustable steel leveling aircraft cable and mounting hardware necessary for grid or hard ceiling applications provided.
- LISTINGS** –
  - cCSAus certified as luminaire suitable for dry or damp locations.
  - RoHS compliant.
  - Complies with the Buy American Act and other federal regulations. Request certification at [hew.com/baa](http://hew.com/baa).
- WARRANTY** – 5-year limited warranty, see [hew.com/warranty](http://hew.com/warranty).

**ORDERING EXAMPLE:** SIA2 - RD - 4 - L20/835 - AC/D48 - OPTIONS - CONTROL/DRV - UNV

## ORDERING INFO

SERIES	FIXTURE STYLE	NOMINAL LENGTH	LUMENS <sup>(1)</sup>	CRI	CCT
SIA2	RD Round	Stand-alone: 4' & 8' nominal lengths, fixture ships assembled. Example: 4 = 4'	L10 1,000lm	8 80	27 2700K
	SQ Square	Row-mount: Lengths specified in 4' increments Example: 12 = 12'	L15 1,500lm	9 90 <sup>(2)</sup>	30 3000K
			L20 2,000lm		35 3500K 40 4000K 50 5000K

### Product Builder

Simplify ordering & layout design with the Williams Linear Product Builder at [hew.com](http://hew.com)

## MOUNTING

### AIRCRAFT CABLES (EXAMPLE: AC/D48) <sup>(3)</sup>

Prefix	Type	Length
AC/	Aircraft	D 1" grid & hardpan 24 24"
		N 9/16" grid 48 48"
	S Slot grid	96 96"

## OPTIONS

See page 3 for FINISH OPTIONS.

**EM/10WRM** Remote mount 10-watt emergency battery <sup>(4)</sup>  
(L\_\_\_) Additional lower lumen packages available  
Example: 1,600 lumens = SIA2-RD-4-L20/835-(L16) <sup>(5)</sup>

## CONTROL

– None

See page 4 for Additional Control Options. <sup>(7)</sup>

## DRIVER <sup>(6)</sup>

**DIM** Dimming driver  
**DRV** Non-dimming driver

## VOLTAGE

**120** 120V  
**277** 277V  
**UNV** 120-277V  
**347** 347V <sup>(8)</sup>

## NOTES

- Lumens per foot output based on 80 CRI/3500K CCT. Actual performance may vary +/-5%. See page 2 for FIXTURE PERFORMANCE DATA. Additional lumen packages available, see Options.
- Extended lead times may apply. Consult factory for availability.
- See page 3 for MOUNTING DETAILS.
- 4' sections only. Requires remote mounted LED driver, provided with remote mounting enclosure for installation in ceiling above fixture. Separate power and control wiring to remote box required. Consult factory for specifications; not available with OCC sensor. See page 3 for MOUNTING DETAILS.

- (L8) lumen package minimum. Specify in increments of 100 nominal lumens. Option must be specified with next higher lumen package.
- See page 4 for ADDITIONAL DRIVER OPTIONS.
- See page 3 for SENSOR PLACEMENT DETAILS.
- Not available with EM batteries.



# SIA2<sup>LED</sup> Suspended Indirect Architectural – Edgelit

## FIXTURE PERFORMANCE DATA

	LED PACKAGE	DELIVERED LUMENS	WATTAGE	EFFICACY (lm/W)	LUMEN MAINTENANCE <sup>(1)</sup>			
					L70	L80	L85	L90
4'	L10	3902	31.5	124	>72000	>72000	>72000	50000
	L15	5853	47.9	122	>72000	>72000	58000	36000
	L20	7804	64.2	122	>72000	>72000	58000	36000
8'	L10	7805	63.0	124	>72000	>72000	>72000	50000
	L15	11707	95.8	122	>72000	>72000	58000	36000
	L20	15608	128.3	122	>72000	>72000	58000	36000

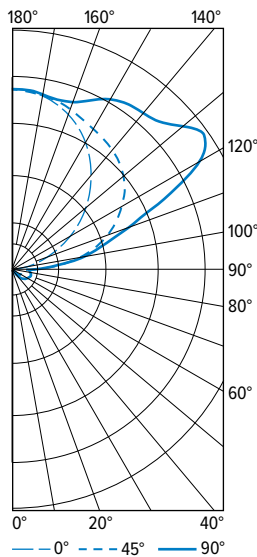
- <sup>1</sup> Predicted lumen maintenance calculated in accordance with IES TM-21 per Energy Star (R) TM-21 Calculator rev. 02.08.16.
- Photometrics tested in accordance with IESNA LM-79. Results based on 80 CRI/3500K CCT, average wattage for 120V through 277V input, and 25°C ambient temperature. Actual performance may vary +/-5%.
  - To calculate lumen output in emergency mode, multiply the battery wattage by the efficacy.
  - Use multiplier table to calculate additional options.

## MULTIPLIER TABLE

COLOR TEMPERATURE		
	CCT	CONVERSION FACTOR
80 CRI	2700K	0.97
	3000K	0.99
	3500K	1.00
	4000K	1.03
	5000K	1.06
90 CRI	2700K	0.80
	3000K	0.82
	3500K	0.83
	4000K	0.86
	5000K	0.89

## PHOTOMETRY

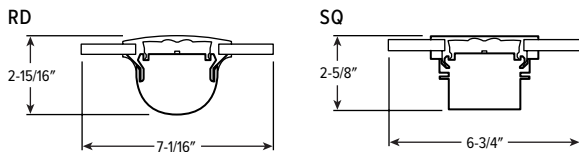
SIA2-RD-4-L20/835 Total Luminaire Output: 7804 lumens; 64.2 Watts | Efficacy: 122 lm/W | 80 CRI; 3500K CCT



VERTICAL ANGLE	HORIZONTAL ANGLE			ZONAL LUMENS
	0°	45°	90°	
0	6	6	6	
5	2	3	7	0
15	2	5	11	2
25	2	11	29	7
35	2	25	36	14
45	3	29	61	25
55	8	51	116	50
65	15	68	140	70
75	12	69	141	75
85	3	89	244	132
90	5	268	377	
95	52	463	584	401
105	265	827	973	772
115	528	1146	1890	1192
125	790	1355	2487	1348
135	1064	1544	2203	1229
145	1297	1604	2082	1042
155	1538	1649	1927	784
165	1694	1743	1763	492
175	1787	1807	1790	171
180	1808	1808	1808	

	ZONE	LUMENS	% FIXTURE
LUMEN SUMMARY	0 - 30	9	0
	0 - 40	23	0
	0 - 60	99	1
	0 - 90	375	5
	90 - 120	2364	30
	90 - 150	5983	77
	90 - 180	7429	95
	0 - 180	7804	100

## CROSS SECTIONS



## FIXTURE STYLES

### RD (ROUND)



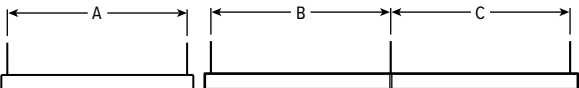
### SQ (SQUARE)



# SIA2<sup>LED</sup> Suspended Indirect Architectural – Edgelit

## MOUNTING DETAILS

### BACKVIEW

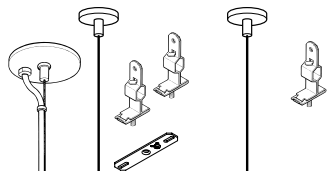


Stand-Alone Unit

Row-Mounted Units

NOMINAL LENGTH	A	B	C
4'	46-1/8"	46-1/4"	47-1/16"
8'	93-3/16"	93-1/4"	94-1/8"

### STANDARD HARDWARE (Grid and Hardpan)



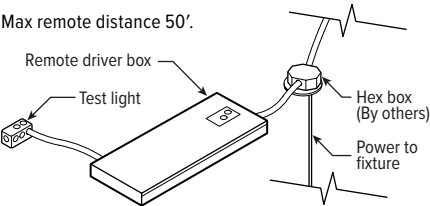
Power End/Stand-Alone

Row Mount Support

- Fixtures are provided with adjustable length aircraft cables and mounting hardware, must specify.
- Electrical supply is brought into the feeder fixture, either as part of a row or as a stand-alone unit. Joiner fixtures complete the row.
- The feeder kits are standard with a 5" canopy to cover the junction box and a 2" canopy at the non-feed point. No J-box is required at non-feed points.

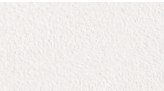
### REMOTE MOUNT BATTERY

Max remote distance 50'.



## FINISH OPTIONS

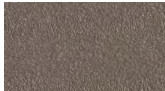
### WHITE



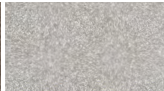
### BLACK



### BRONZE



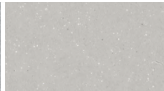
### NICKEL



### SILVER

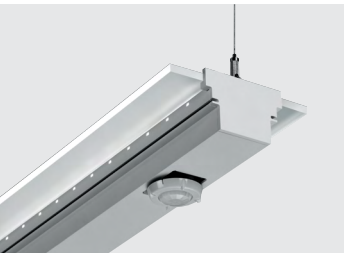


### ALUM



For custom color, please specify RAL code or a manufacturer code with description. All custom colors other than RAL require two sample swatches, minimum 1" square.

## SENSOR PLACEMENT DETAILS



SEE NEXT PAGE FOR CONTROL DETAILS.



H.E. Williams, Inc.

Carthage, Missouri

www.hew.com

417-358-4065

Designed and Manufactured in the USA

REV.01/08/24.JL

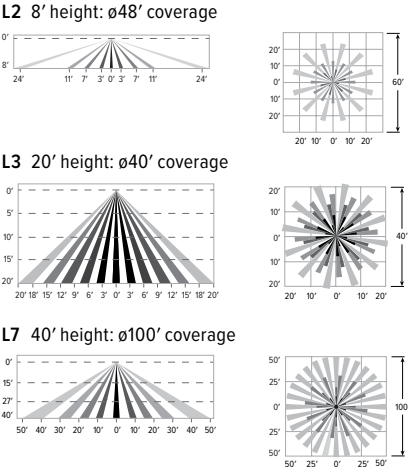
Suspended  
Page 3 of 4

ADDITIONAL CONTROL OPTIONS

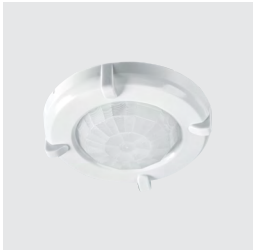
**OCCWS-FSP-311-L\_-120/277** Wattstopper PIR motion and daylight sensor, 120/277. Must specify lens: L2, L3, or L7. Factory installed.  
**OCCWS-FSP-211-L\_-120/277** Wattstopper PIR motion and daylight sensor, 120/277. Must specify lens: L2, L3, or L7. Factory installed.  
**FSIR-100** Remote controller for 211 sensor. Please specify quantity required per project. Ordered and shipped separately.

SPECIFICATIONS	
TYPE	PIR Motion + Daylight
MOUNTING HEIGHT	8' – 40'
DETECTION ANGLE	360°
TEMPERATURE RANGE	-40° to 75°C
COMMISSIONING	311 Sensor: App (iOS or Android) 211 Sensor: FSIR-100 Remote

SENSOR COVERAGE PATTERNS



SENSOR DETAIL



Dimensions  
L2/L3: ø2-3/8" | L7: ø3-1/4"

ADDITIONAL DRIVER OPTIONS

Note: Lumen restrictions apply, consult product builder at [hew.com/product-builder](http://hew.com/product-builder).

CATALOG NUMBER	DESCRIPTION
DRV	Driver prewired for non-dimming applications
DIM	Dimming driver prewired for 0-10V low voltage applications
DIM1	1% dimming driver prewired for 0-10V low voltage applications
DIM LINE	Line voltage dimming driver (TRIAC and ELV compatible, 120V only)
DIM TRC	Line voltage dimming driver (TRIAC compatible, 120V only)
SD40	40% step-dimming driver
SD50	50% step-dimming driver
DALI	DALI dimming driver
LDE1	Lutron Hi-lume 1% EcoSystem dimming LED driver

