

PROJECT: \_\_\_\_\_



## FIXTURE PERFORMANCE DATA

|    | LED PACKAGE | DELIVERED LUMENS | WATTAGE | EFFICACY (lm/W) | LUMEN MAINTENANCE <sup>(1)</sup> |        |        |       |
|----|-------------|------------------|---------|-----------------|----------------------------------|--------|--------|-------|
|    |             |                  |         |                 | L70                              | L80    | L85    | L90   |
| 4' | L10         | 3922             | 31.5    | 125             | >72000                           | >72000 | >72000 | 50000 |
|    | L15         | 5882             | 47.9    | 123             | >72000                           | >72000 | 58000  | 36000 |
|    | L20         | 7843             | 64.2    | 122             | >72000                           | >72000 | 58000  | 36000 |
| 8' | L10         | 7844             | 63.0    | 125             | >72000                           | >72000 | >72000 | 50000 |
|    | L15         | 11766            | 95.8    | 123             | >72000                           | >72000 | 58000  | 36000 |
|    | L20         | 15686            | 128.3   | 122             | >72000                           | >72000 | 58000  | 36000 |

<sup>1</sup> Predicted lumen maintenance calculated in accordance with IES TM-21 per Energy Star (R) TM-21 Calculator rev. 02.08.16.

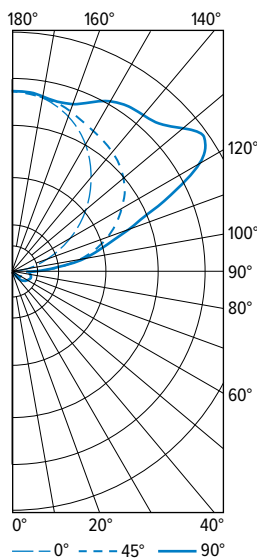
- Photometrics tested in accordance with IESNA LM-79. Results based on 80 CRI/3500K CCT, average wattage for 120V through 277V input, and 25°C ambient temperature. Actual performance may vary +/-5%.
- To calculate lumen output in emergency mode, multiply the battery wattage by the efficacy.
- Use multiplier table to calculate additional options.

## MULTIPLIER TABLE

| COLOR TEMPERATURE |       |                   |
|-------------------|-------|-------------------|
|                   | CCT   | CONVERSION FACTOR |
|                   |       |                   |
| 80 CRI            | 2700K | 0.97              |
|                   | 3000K | 0.99              |
|                   | 3500K | 1.00              |
|                   | 4000K | 1.03              |
|                   | 5000K | 1.06              |
| 90 CRI            | 2700K | 0.80              |
|                   | 3000K | 0.82              |
|                   | 3500K | 0.83              |
|                   | 4000K | 0.86              |
|                   | 5000K | 0.89              |

## PHOTOMETRY

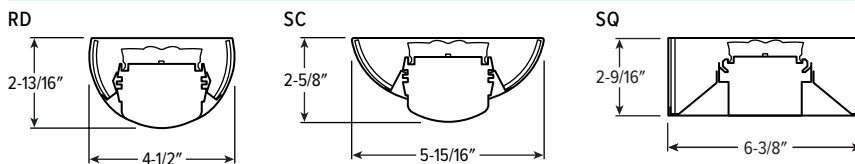
SIA1-SC-4-L20/835 Total Luminaire Output: 7843 lumens; 64.2 Watts | Efficacy: 122 lm/W | 80 CRI; 3500K CCT



| VERTICAL ANGLE | HORIZONTAL ANGLE |      |      | ZONAL LUMENS |
|----------------|------------------|------|------|--------------|
|                | 0°               | 45°  | 90°  |              |
| 0              | 31               | 31   | 31   |              |
| 5              | 26               | 29   | 29   | 3            |
| 15             | 26               | 37   | 44   | 10           |
| 25             | 22               | 42   | 66   | 21           |
| 35             | 22               | 59   | 97   | 38           |
| 45             | 22               | 75   | 136  | 61           |
| 55             | 22               | 95   | 173  | 84           |
| 65             | 20               | 99   | 191  | 100          |
| 75             | 11               | 97   | 187  | 102          |
| 85             | 9                | 88   | 171  | 115          |
| 90             | 0                | 176  | 250  |              |
| 95             | 55               | 428  | 474  | 366          |
| 105            | 259              | 876  | 993  | 775          |
| 115            | 514              | 1200 | 1821 | 1190         |
| 125            | 778              | 1367 | 2450 | 1337         |
| 135            | 1044             | 1525 | 2186 | 1209         |
| 145            | 1285             | 1582 | 2026 | 1021         |
| 155            | 1516             | 1604 | 1832 | 763          |
| 165            | 1665             | 1701 | 1716 | 481          |
| 175            | 1757             | 1775 | 1758 | 168          |
| 180            | 1775             | 1775 | 1775 |              |

| ZONE     | LUMENS | % FIXTURE |
|----------|--------|-----------|
| 0 - 30   | 34     | 0         |
| 0 - 40   | 72     | 1         |
| 0 - 60   | 217    | 3         |
| 0 - 90   | 534    | 7         |
| 90 - 120 | 2331   | 30        |
| 90 - 150 | 5897   | 75        |
| 90 - 180 | 7309   | 93        |
| 0 - 180  | 7843   | 100       |

## CROSS SECTIONS



## FIXTURE STYLES

RD (ROUND)



SC (SCOOP)

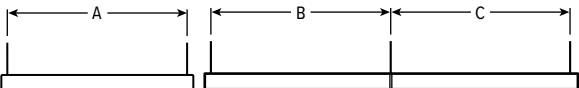


SQ (SQUARE)



MOUNTING DETAILS

BACKVIEW

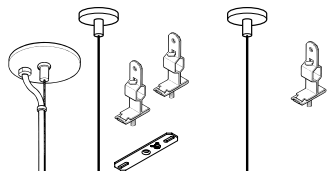


Stand-Alone Unit

Row-Mounted Units

| NOMINAL LENGTH | A        | B       | C        |
|----------------|----------|---------|----------|
| 4'             | 46-1/8"  | 46-1/4" | 47-1/16" |
| 8'             | 93-3/16" | 93-1/4" | 94-1/8"  |

STANDARD HARDWARE (Grid and Hardpan)



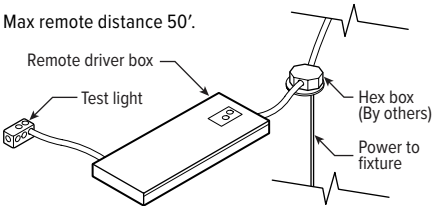
Power End/Stand-Alone

Row Mount Support

- Fixtures are provided with adjustable length aircraft cables and mounting hardware, must specify.
- Electrical supply is brought into the feeder fixture, either as part of a row or as a stand-alone unit. Joiner fixtures complete the row.
- The feeder kits are standard with a 5" canopy to cover the junction box and a 2" canopy at the non-feed point. No J-box is required at non-feed points.

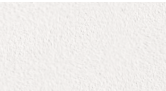
REMOTE MOUNT BATTERY

Max remote distance 50'.



FINISH OPTIONS

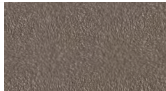
WHITE



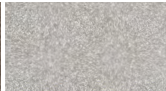
BLACK



BRONZE



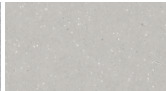
NICKEL



SILVER



ALUM



For custom color, please specify RAL code or a manufacturer code with description. All custom colors other than RAL require two sample swatches, minimum 1" square.

SENSOR PLACEMENT DETAILS



SEE NEXT PAGE FOR CONTROL DETAILS.



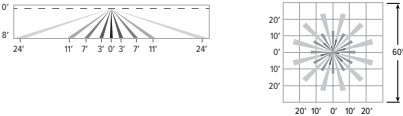
ADDITIONAL CONTROL OPTIONS

**OCCWS-FSP-311-L\_-120/277** Wattstopper PIR motion and daylight sensor, 120/277. Must specify lens: L2, L3, or L7. Factory installed.  
**OCCWS-FSP-211-L\_-120/277** Wattstopper PIR motion and daylight sensor, 120/277. Must specify lens: L2, L3, or L7. Factory installed.  
**FSIR-100** Remote controller for 211 sensor. Please specify quantity required per project. Ordered and shipped separately.

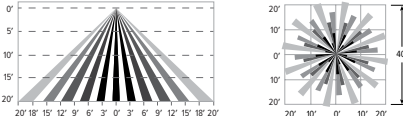
| SPECIFICATIONS    |   |
|-------------------|---|
| TYPE              | PIR Motion + Daylight   |
| MOUNTING HEIGHT   | 8' – 40'  |
| DETECTION ANGLE   | 360°  |
| TEMPERATURE RANGE | -40° to 75°C  |
| COMMISSIONING     | 311 Sensor: App (iOS or Android)<br>211 Sensor: FSIR-100 Remote |

SENSOR COVERAGE PATTERNS

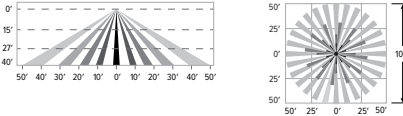
L2 8' height: ø48' coverage



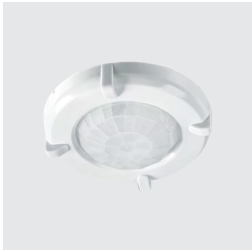
L3 20' height: ø40' coverage



L7 40' height: ø100' coverage



SENSOR DETAIL



Dimensions  
L2/L3: ø2-3/8" | L7: ø3-1/4"

ADDITIONAL DRIVER OPTIONS

Note: Lumen restrictions apply, consult product builder at [hew.com/product-builder](http://hew.com/product-builder).

| CATALOG NUMBER | DESCRIPTION   |
|----------------|---|
| DRV            | Driver prewired for non-dimming applications                      |
| DIM            | Dimming driver prewired for 0-10V low voltage applications        |
| DIM1           | 1% dimming driver prewired for 0-10V low voltage applications     |
| DIM LINE       | Line voltage dimming driver (TRIAC and ELV compatible, 120V only) |
| DIM TRC        | Line voltage dimming driver (TRIAC compatible, 120V only)         |
| SD40           | 40% step-dimming driver   |
| SD50           | 50% step-dimming driver   |
| DALI           | DALI dimming driver   |
| LDE1           | Lutron Hi-lume 1% EcoSystem dimming LED driver                    |