

CATALOG #: \_\_\_\_\_

TYPE: \_\_\_\_\_

PROJECT: \_\_\_\_\_

## FEATURES

- Support human-centric design with adaptive, individualized lighting using tunable white light
- Dramatically illuminate accent walls and emphasize textured surfaces
- Sleek, linear design incorporates clean lines, slim styling, and a continuous row of light
- Quick and easy installation with wall mounted bracket providing multiple pre-drilled screw locations and a quick hang feature for the fixture
- Solutions for both grid and drywall ceilings
- Adjustable extensions allow for a perfect fit to meet adjacent walls
- Diffuse acrylic lens shields LEDs from view
- Made Right Here® in the USA



**ORDERING EXAMPLE:** PX G - 46 - 14'08 - L10/8TW - G - LCAP/RCAP - OPTIONS - DIM - UNV

## ORDERING INFO

SERIES	CEILING TYPE	WIDTH	HEIGHT	LENGTH
PX	G Grid F Drywall	4 4"	6 6"	Lengths specified in feet and inches using 1" increments, 2' minimum. Example: 14'08 = 14'-8"

### PRODUCT BUILDER

Simplify ordering & layout design with the Williams Linear Product Builder at [hew.com/product-builder](http://hew.com/product-builder)

LUMEN PACKAGE <sup>[1]</sup>	CRI	CCT	DISTRIBUTION	LEFT END TYPE	RIGHT END TYPE
L4 400lm	8 80	TW Tunable white (3000K-5000K)	G Graze	LWALL Wall	RWALL Wall
L7 700lm	9 90 <sup>[2]</sup>	TW2 Tunable white (2700K-6500K)		LCAP Cap	RCAP Cap
L10 1,000lm					

## SPECIFICATIONS

- HOUSING** – Formed sheet metal and aluminum.
- FINISH** – Textured matte white polyester TGIC powder coat bonded to phosphate-free, multistage pretreated metal. All parts painted after fabrication to facilitate installation, increase efficiency, and inhibit corrosion.
- ELECTRICAL** – High-quality mid-power LED board. L70 > 50,000 hours per IES TM-21. Tunable White products use LEDs of multiple CCTs and may produce a perceptibly different shade of white from single-CCT products at the same CCT. All CCTs are within 3 MacAdam ellipses.
- MOUNTING** – Wall mount rail, predrilled with wall screw locations, with quick hang feature.
- LISTINGS** –
  - cCSAus certified as luminaire suitable for dry or damp locations.
  - Complies with the Buy American Act and other federal regulations. Request certification at [hew.com/baa](http://hew.com/baa).
- WARRANTY** – 5-year limited warranty, see [hew.com/warranty](http://hew.com/warranty).

## OPTIONS

EM/10WLP	Low-profile 10-watt emergency battery <sup>[3]</sup>
EM/10WRM	Remote mount 10-watt emergency battery <sup>[4]</sup>
DG	Diffuse graze acrylic lens
(L__)	Additional lower lumen packages available <sup>[5]</sup> Example: 800 lumens = PXG-46-14'08-L10/8TW-(L8)

## DRIVER

DALI	Driver prewired for DALI applications
DIM	(1) 0-10V signal to control dimming (1) 0-10V signal to control CCT
DMX	Driver prewired for DMX applications
PSQ	Lutron T-Series 2-channel tunable white 1%

## VOLTAGE

120	120V
277	277V
UNV	120-277V

## NOTES

- <sup>1</sup> Lumens per foot output based on 4000 CCT. Actual lumens per foot may vary +/-5%. See page 2 for FIXTURE PERFORMANCE DATA. Additional lumen packages available, see Options.
- <sup>2</sup> Extended lead times may apply. Consult factory for availability.
- <sup>3</sup> Minimum 4' fixture; 120V-277V only.

- <sup>4</sup> Required for fixtures below 4'; 120V-277V only.
- <sup>5</sup> (L5) lumen package minimum. Specify in increments of 100 nominal lumens. Option must be specified with next higher lumen package.



## FIXTURE PERFORMANCE DATA

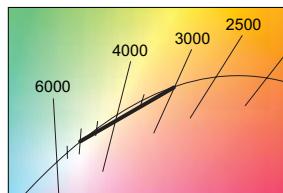
	DELIVERED LUMENS	WATTAGE PER FOOT	EFFICACY (lm/W)
<b>L4</b>	343	3.6	95
<b>L7</b>	600	6.5	92
<b>L10</b>	857	9.8	87

- Photometrics tested in accordance with IESNA LM-79. Results shown are based on 25°C ambient temperature.
- Wattage shown is average for 120V through 277V input.
- Results based on 4000K, 80 CRI, actual lumens may vary +/-5%
- To calculate lumen output in emergency mode, multiply the battery wattage by the efficacy.
- Use multiplier table to calculate additional options.

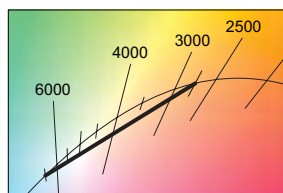
## MULTIPLIER TABLE

COLOR TEMPERATURE					
	CCT	TW		TW2	
		LUMENS	WATTAGE	LUMENS	WATTAGE
80 CRI	2700K	—	—	0.93	1.02
	3000K	0.95	1.04	0.95	1.01
	3500K	0.98	1.02	0.98	1.00
	4000K	1.00	1.00	1.00	1.00
	5000K	0.96	1.04	1.02	1.00
90 CRI	2700K	—	—	0.93	1.02
	3000K	0.91	1.03	0.95	1.01
	3500K	0.96	1.01	0.98	1.00
	4000K	1.00	1.00	1.00	1.00
	5000K	1.03	1.03	1.03	1.00
	6500K	—	—	1.01	1.04

## TW

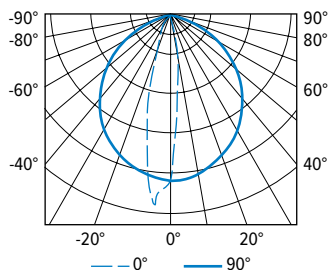


## TW2



## PHOTOMETRY

**PXF-46-03'08-L10/8TW-G-LCAP/RCAP-DIM-UNV** Total Luminaire Output: 3145 lumens; 36 Watts | Efficacy: 87.4 lm/W | 80 CRI; 4000K CCT

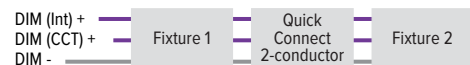


VERTICAL ANGLE	HORIZONTAL ANGLE					ZONAL LUMENS
	0°	45°	90°	135°	180°	
0	3964	3964	3964	3964	3964	
5	2000	2661	3952	4738	4557	326
15	444	812	3743	3214	2033	636
25	247	270	3399	1311	540	606
35	216	227	2923	498	320	531
45	218	196	2345	315	172	429
55	161	181	1657	150	108	325
65	92	117	907	82	64	203
75	36	49	246	36	26	78
85	3	7	20	3	0	11
90	0	0	0	0	0	

LUMEN SUMMARY	ZONE	LUMENS	% FIXTURE
	0 - 30	1568	50
	0 - 40	2099	67
	0 - 60	2852	91
	0 - 90	3145	100
	0 - 180	3145	100

## CONTROL DETAILS

### DIM



### DMX



### DALI

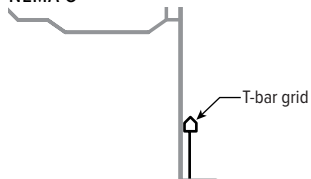


### LUTRON T-SERIES



## CEILING TYPE DETAILS

### NEMA G



### NEMA F

