

CATALOG #: _____

TYPE: _____

PROJECT: _____



FEATURES

- Support human-centric design with adaptive, individualized lighting using tunable white light
- Shallow fixture depth for low ceiling applications
- Uniform ambient illumination
- Companion recessed and retrofit kit preserve continuity, see hew.com
- Maximize energy savings with efficacies up to 120 lm/W
- Heavy duty C.R.S. construction
- Made Right Here® in the USA

SPECIFICATIONS

- HOUSING** – Precision die-formed 20-gauge C.R.S.
- REFLECTOR** – Precision die-formed 22-gauge C.R.S. Highly reflective non-glare matte white polyester powder coat.
- SHIELDING** – Diffuse ribbed acrylic.
- FINISH** – Textured matte white polyester TGIC powder coat bonded to phosphate-free, multi-stage pretreated metal. All parts painted after fabrication to facilitate installation, increase efficiency, and inhibit corrosion.
- ELECTRICAL** – High-quality mid-power LED boards. L70 >50,000 hours per IES TM-21. Tunable White products use LEDs of multiple shade of white from single-CCT products at the same CCT. All CCTs are within 3 MacAdam ellipses.
- MOUNTING** – Surface or suspended.
- LISTINGS** –
 - cCSAus certified as luminaire suitable for dry or damp locations.
 - Complies with the Buy American Act and other federal regulations. Request certification at hew.com/baa.
- WARRANTY** – 5-year limited warranty, see hew.com/warranty.

ORDERING EXAMPLE: PTS - 2 4 - L77/8TW - RA - OPTIONS - DALI - UNV

ORDERING INFO

SERIES	WIDTH	LENGTH	LUMENS ^[1]	CRI	CCT	SHIELDING
PTS	1 1' ^[2]	2 2' ^[3]	1x4	8 80	TW Tunable white (3000K–5000K)	RA Diffuse ribbed acrylic, round
			L32 3,200lm	9 90 ^[4]		SA Diffuse ribbed acrylic, square ^[5]
	2 2'	4 4'	L43 4,300lm		TW2 Tunable white (2700K-6500K)	
			2x2			
			L29 2,900lm			
			L43 4,300lm			
			2x4			
			L33 3,300lm			
			L58 5,800lm			
		L77 7,700lm				

OPTIONS ^[6]

EM/10W	10-watt emergency battery ^[8]
EM/10WLP	Low-profile 10-watt emergency battery ^[9]
EM/12W (L__)	12-watt emergency battery ^[10] Additional lower lumen packages available. Example: 7,000 lumens = PTS-24-L77/8TW-(L70) ^[11]
AMW	Anti-microbial white finish

CONTROL ^[7]

DALI	Driver prewired for DALI applications
DIM	(1) 0-10V signal to control dimming (1) 0-10V signal to control CCT
DMX	Driver prewired for DMX applications
PSQ	Lutron T-Series 2-channel tunable white 1%.

VOLTAGE

120	120V
277	277V
UNV	120-277V

NOTES

- ¹ Lumen output based on 80 CRI/3500K CCT. Actual lumens may vary +/-5%, see page 2 for FIXTURE PERFORMANCE DATA. Additional lumen packages available, see Options.
- ² 4' length only.
- ³ 2' width only.
- ⁴ Extended lead times may apply. Consult factory for availability.
- ⁵ Increases lumen output by 3%.
- ⁶ Suspended mounting available. See page 3 for SUSPENDED MOUNTING DETAILS. See page 3 for FINISH OPTIONS.

- ⁷ See page 3 for CONTROL DETAILS.

- ⁸ 2x2 & 2x4 only.

- ⁹ 1x4 only.

- ¹⁰ 2x2 & 2x4 only. Not available when CEC regulations are required.

- ¹¹ Specify in increments of 100 nominal lumens. Option must be specified with next higher lumen package.



FIXTURE PERFORMANCE DATA

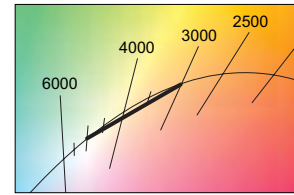
	LED PACKAGE	DELIVERED LUMENS	WATTAGE	EFFICACY (lm/W)
1x4	L32	3292	27.4	120
	L43	4319	37.1	116
2x2	L29	2929	26.8	109
	L43	4422	38.8	114
2x4	L33	3423	28.6	120
	L58	5878	52.6	112
	L77	7716	65.0	119

- Photometrics tested in accordance with IESNA LM-79. Results based on 80 CRI/4000K CCT, average wattage for 120V through 277V input, and 25°C ambient temperature. Actual performance may vary +/-5%.
- To calculate lumen output in emergency mode, multiply the battery wattage by the efficacy.
- Use multiplier table to calculate additional options.

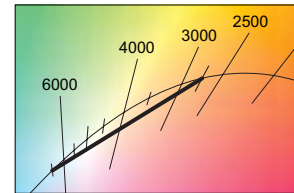
MULTIPLIER TABLE

COLOR TEMPERATURE					
	CCT	TW		TW2	
		LUMENS	WATTAGE	LUMENS	WATTAGE
80 CRI	2700K	—	—	0.93	1.02
	3000K	0.95	1.04	0.95	1.01
	3500K	0.98	1.02	0.98	1.00
	4000K	1.00	1.00	1.00	1.00
	5000K	0.96	1.04	1.02	1.00
6500K	—	—	—	1.01	1.04
90 CRI	2700K	—	—	0.81	1.02
	3000K	0.83	1.04	0.83	1.01
	3500K	0.86	1.02	0.86	1.00
	4000K	0.88	1.00	0.88	1.00
	5000K	0.84	1.04	0.89	1.00
	6500K	—	—	0.88	1.04

TW

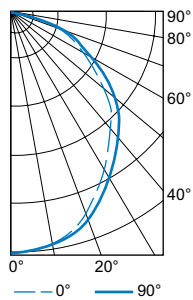


TW2



PHOTOMETRY

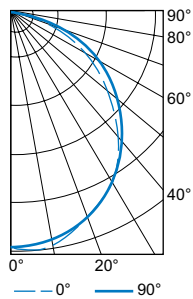
PTS-24-L77/8TW-RA-DALI Total Luminaire Output: 7716 lumens; 65 Watts | Efficacy: 119 lm/W | 80 CRI; 4000K CCT



VERTICAL ANGLE	HORIZONTAL ANGLE			ZONAL LUMENS
	0°	45°	90°	
0	2952	2952	2952	
5	2907	2903	2888	277
15	2822	2831	2843	793
25	2486	2519	2550	1148
35	2009	2073	2127	1294
45	1634	1724	1812	1320
55	1188	1300	1404	1166
65	769	912	1036	900
75	365	560	693	589
85	74	247	283	231
90	0	0	0	

LUMEN SUMMARY	ZONE	LUMENS	% FIXTURE
	0 - 30	2218	29
	0 - 40	3511	46
	0 - 60	5997	78
	0 - 90	7716	100
	0 - 180	7716	100

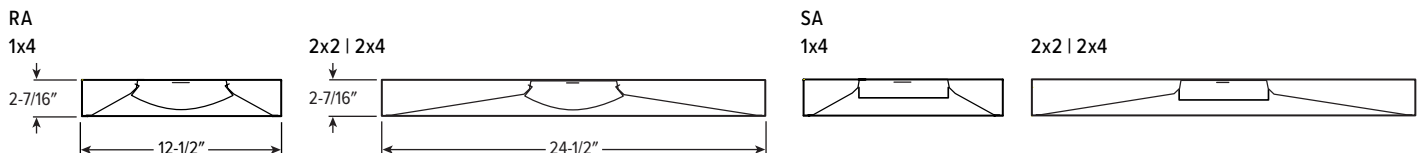
PTS-14-L43/8TW-RA-DALI Total Luminaire Output: 4319 lumens; 37 Watts | Efficacy: 116 lm/W | 80 CRI; 4000K CCT



VERTICAL ANGLE	HORIZONTAL ANGLE			ZONAL LUMENS
	0°	45°	90°	
0	1574	1574	1574	
5	1610	1592	1568	151
15	1538	1534	1516	431
25	1407	1414	1397	647
35	1224	1240	1241	769
45	977	1020	1035	778
55	699	768	801	683
65	448	531	545	508
75	199	279	291	284
85	31	50	59	70
90	0	0	0	

LUMEN SUMMARY	ZONE	LUMENS	% FIXTURE
	0 - 30	1228	28
	0 - 40	1997	46
	0 - 60	3457	80
	0 - 90	4319	100
	0 - 180	4319	100

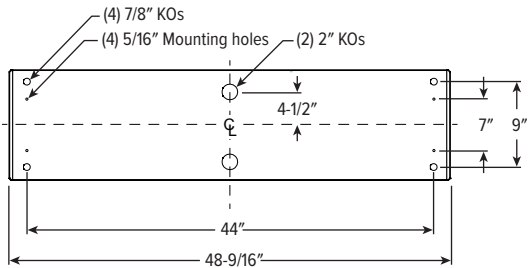
CROSS SECTIONS



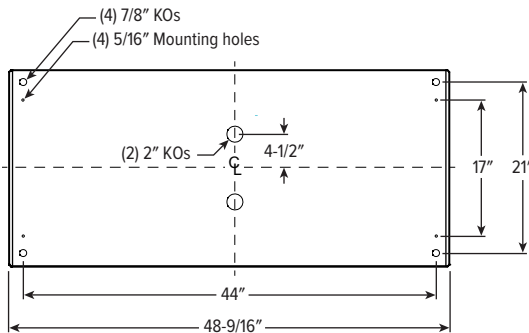
FIXTURE DETAILS

BACKVIEW

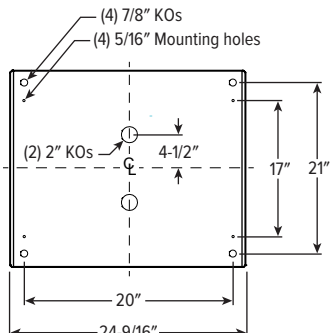
1x4



2x4



2x2



SUSPENDED MOUNTING DETAILS

AIRCRAFT CABLE

ORDERING EXAMPLE: ACF*4P/D48				
PREFIX	TYPE	LENGTH		
ACF*4P	Four point mount adjustable aircraft cable	D 1" grid & hardpan	24	24"
		N 9/16" grid	48	48"
		S Slot grid	96	96"
			144	144"
			192	192"
			240	240"
			300	300"

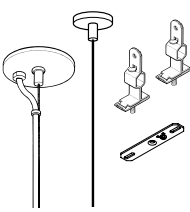
CORD OPTIONS

Units specified with aircraft cable require cord. Please specify cord type using ordering information below. Long fixture rows may require multiple feed points based on 18ga conductor size.

EXAMPLE: S2438D/W				
CORD TYPE	LENGTH	# OF COND. ¹	WIRE SIZE	COLOR
S	24 24"	3	8D 18ga	/W White /B Black
	48 48"	4		
	96 96"	5		
		6		

¹ Includes (2) 22ga purple & pink dimming conductors

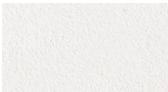
STANDARD HARDWARE (Grid & Hardpan)



- Fixtures are provided with adjustable length aircraft cables and mounting hardware, must specify.
- One 5" canopy used at power feed location to cover the junction box. Three other suspension points use 2" canopy at the non-feed point. No J-box is required at non-feed points.

FINISH OPTIONS

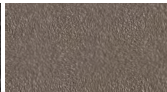
WHITE



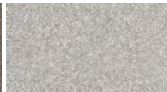
BLACK



BRONZE



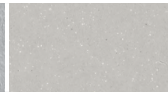
NICKEL



SILVER



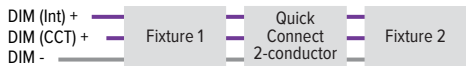
ALUM



For custom color, please specify RAL code or a manufacturer code with description. All custom colors other than RAL require two sample swatches, minimum 1" square.

CONTROL DETAILS

DIM



DMX



DALI



LUTRON T-SERIES

