

CATALOG #: _____

TYPE: _____

PROJECT: _____



FEATURES

- Create elegant spaces with a seamless, continuous row of illumination
- Flat and proud lenses give designers a variety of looks
- High-performance up to 113 lm/W
- Linear extrusion contains snap-in light rails for ease of installation and maintenance
- Versatile MX4 system includes recessed, surface, suspended and in-wall mounting, see hew.com
- Corner configurations available, see Product Builder at hew.com/product-builder
- Diffuse acrylic lens provides uniform illumination for visual comfort
- Wireless in-fixture control solutions available
- Available with BIOS® SkyBlue® technology to support proper daytime circadian stimulus
- Made Right Here® in the USA

SPECIFICATIONS

- **HOUSING** – Extruded aluminum with die-cast end plates.
- **SHIELDING** – Extruded, flat, diffuse acrylic lens.
- **FINISH** – Textured matte white polyester TGIC powder coat bonded to phosphate-free, multi-stage pretreated metal. All parts painted after fabrication to facilitate installation, increase efficiency, and inhibit corrosion.
- **ELECTRICAL** – High-quality mid-power LED boards. L70 >60,000 hours per IES TM-21.
- **MOUNTING** – Surface.
- **LISTINGS** –
 - cCSAus certified as luminaire suitable for dry or damp locations.
 - Complies with the Buy American Act and other federal regulations. Request certification at hew.com/baa.
- **WARRANTY** – 5-year limited warranty, see hew.com/warranty.

ORDERING EXAMPLE: MX4S - 12'00 - L8/835 - F - OPTIONS - CONTROL/DIM - UNV

SERIES ILLUMINATED LENGTH

MX4S Lengths specified in feet and inches using 4" increments, 2" minimum.
Example: 12'00 = 12'-0"

Product Builder

Easily build shapes & simplify ordering with the Williams Linear Product Builder at hew.com/product-builder ^[1]



LUMENS ^[2]	CRI	CCT	SHIELDING	OPTIONS ^[3]
L8 800lm	8 80	27 2700K	F Flat, diffuse acrylic	See page 3 for FINISH OPTIONS.
L12 1200lm	9 90 ^[4]	30 3000K	P Proud, diffuse acrylic with 5/16" drop ^[5]	EM/10W 10-watt emergency battery ^[6]
L15 1500lm		35 3500K		EM/10WRM Remote mount 10-watt emergency battery ^[7]
		40 4000K		ASY Asymmetric distribution ^[8]
		50 5000K		(L...) Additional lower lumen packages available ^[9] Example: 600 lumens = MX4S-12'00-L8/835-(L6)

CONTROL ^[10]

See page 5 for ADDITIONAL CONTROL OPTIONS.

–	None
AVI-LVFA	Avi-on wireless fixture control ^[11]
AVI-LVFA-CS2-PIR	Avi-on wireless fixture control with PIR motion and daylight sensor ^[12]
AWNRR	Lutron Athena wireless node integral fixture control, RF only ^[13]
AWNS	Lutron Athena wireless node integral fixture control, RF with daylight and occupancy sensing ^[14]

DRIVER

See page 6 for ADDITIONAL DRIVER OPTIONS.

DIM	Driver with external dimming wires	UNV 120-277V
DRV	Driver without external dimming wires	277 277V
DA	Driver with 12V auxiliary power, without external dimming wires ^[15]	347 347V ^[17]
DSR	Sensor-ready driver without external dimming wires (D4i DALI-2) ^[16]	

VOLTAGE

NOTES

- ¹ See page 3 for FIXTURE DETAILS.
- ² Lumens per foot output based on F Shielding, 80 CRI/3500K CCT. Actual performance may vary ± 5%. See page 2 for FIXTURE PERFORMANCE DATA. Additional lumen packages available, see Options.
- ³ See Technical Info for [Power Entry](#) details.
- ⁴ Extended lead times may apply. Consult factory for availability.
- ⁵ See page 2 for CROSS SECTIONS. Not available with corner configurations.
- ⁶ L8 and L12 only. Not available with fixtures less than 4'.
- ⁷ See page 3 for FIXTURE DETAILS.
- ⁸ Available with F shielding only. Creates uneven lens illumination. See page 2 for CROSS SECTIONS.
- ⁹ (L4) lumen package minimum. Specify in increments of 100 nominal lumens. Option must be specified with next higher lumen package.
- ¹⁰ Reduces portion of lit fixture, consult factory. See page 3 for SENSOR & NODE PLACEMENT DETAILS. See page 4 for AVI-ON BLUETOOTH WIRELESS CONTROL DETAILS.
- ¹¹ DA driver only.
- ¹² DA driver only.
- ¹³ DA and DSR Drivers only.
- ¹⁴ DA and DSR Drivers only.
- ¹⁵ Avi-on and Lutron Athena Controls only.
- ¹⁶ Lutron Vive and Athena Controls only.
- ¹⁷ Not available with EM batteries, control sensors, DA, or DSR Drivers.



MX4S LED

4" Continuous – Surface

FIXTURE PERFORMANCE DATA

	PER FOOT		
	DELIVERED LUMENS	WATTAGE	EFFICACY (lm/W)
L8	824	7.3	113
L12	1175	10.8	109
L15	1439	13.5	107

- Photometrics tested in accordance with IESNA LM-79. Results based on F shielding, 80 CRI/3500K CCT, average wattage for 120V through 277V input, and 25°C ambient temperature. Actual performance may vary +/-5%
- To calculate lumen output in emergency mode, multiply the battery wattage by the efficacy.
- Use multiplier tables to calculate additional options.

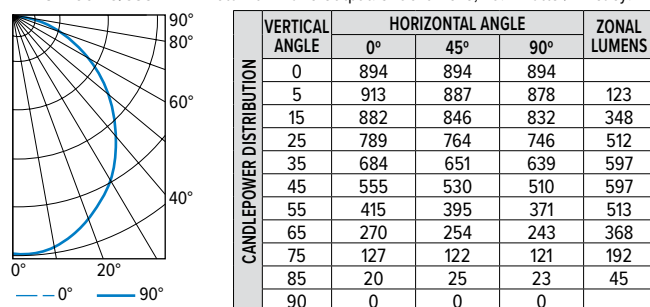
MULTIPLIER TABLES

	COLOR TEMPERATURE	
	CCT	CONVERSION FACTOR
80 CRI	2700K	0.97
	3000K	0.99
	3500K	1.00
	4000K	1.03
	5000K	1.06
90 CRI	2700K	0.82
	3000K	0.83
	3500K	0.84
	4000K	0.86
	5000K	0.90

ASY OPTION	
WATTAGE	EFFICACY (lm/W)
1.03	0.97

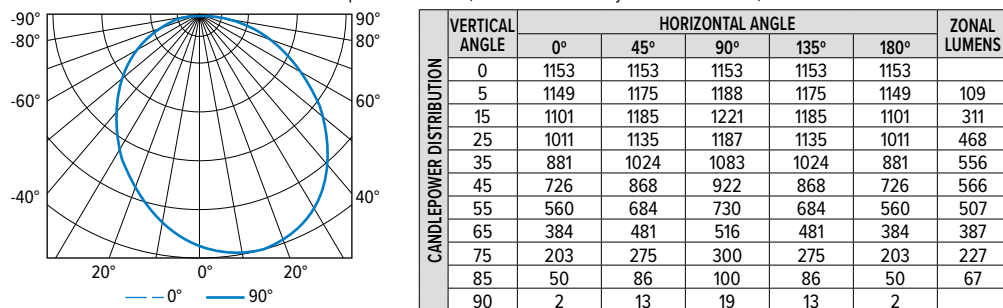
PHOTOMETRY

MX4S-4'00-L8/835-F-DIM Total Luminaire Output: 3296 lumens; 29.2 Watts | Efficacy: 113 lm/W | 80 CRI; 3500K CCT



LUMEN SUMMARY	ZONE	LUMENS	% FIXTURE
	0 - 30	983	30
	0 - 40	1580	48
	0 - 60	2690	82
	0 - 90	3296	100
	0 - 180	3296	100

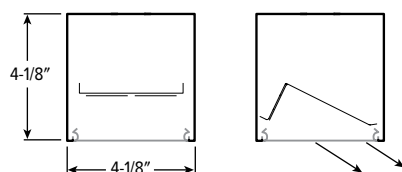
MX4S-4'00-L8/835-F-ASY Total Luminaire Output: 3197 lumens; 29.2 Watts | Efficacy: 109 lm/W | 80 CRI; 3500K CCT



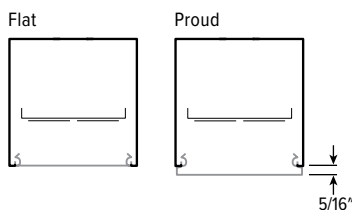
LUMEN SUMMARY	ZONE	LUMENS	% FIXTURE
	0 - 30	887	28
	0 - 40	1443	45
	0 - 60	2516	79
	0 - 90	3197	100
	0 - 180	3197	100

CROSS SECTIONS

ASY OPTION DETAILS



SHIELDING DETAILS



H.E. Williams, Inc.

Carthage, Missouri

www.hew.com

417-358-4065

Designed and Manufactured in the USA

Information contained herein is subject to change without notice.

REV.01/17/24.JL

Continuous

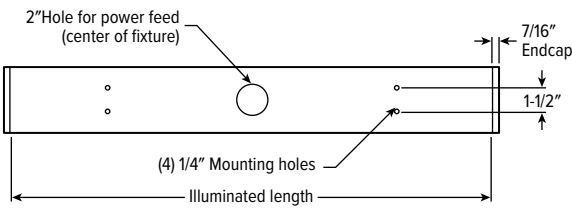
Page 2 of 6

MX4S^{LED}

4" Continuous – Surface

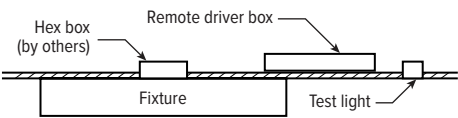
FIXTURE DETAILS

BACK VIEW



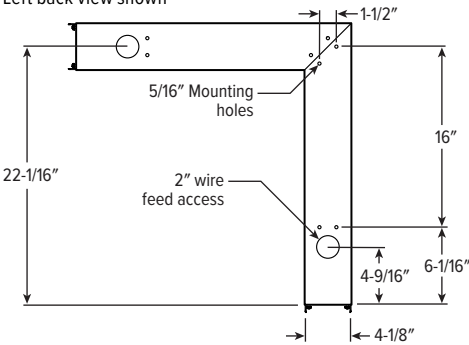
REMOTE MOUNT BATTERY

Max remote distance 50'.



CORNER DETAILS

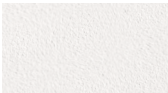
Left back view shown



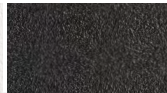
Note: Corner orientation determined in field. Feeder corner end cap shipped separately.

FINISH OPTIONS

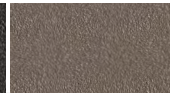
WHITE



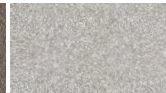
BLACK



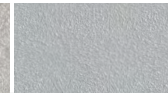
BRONZE



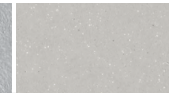
NICKEL



SILVER

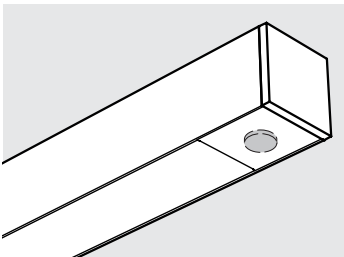


ALUM



For custom color, please specify RAL code or a manufacturer code with description. All custom colors other than RAL require two sample swatches, minimum 1" square.

SENSOR & NODE PLACEMENT DETAILS



SEE NEXT PAGE FOR CONTROL DETAILS



H.E. Williams, Inc.

■ Carthage, Missouri

■ www.hew.com

■ 417-358-4065

■ Designed and Manufactured in the USA

Information contained herein is subject to change without notice.

REV.01/17/24.JL

Continuous

Page 3 of 6

MX4S LED

4" Continuous – Surface

AVI-ON BLUETOOTH WIRELESS CONTROL DETAILS

FEATURES

Simple

- Gateway-free distributed control
- Factory pre-commissioning
- Contractor friendly installation
- Occupancy/vacancy/daylight sensing

Scalable

- Virtually unlimited network size
- Spans small offices to large warehouses
- Flexible control strategies

Secure

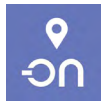
- Optional cloud connectivity
- UL IoT platinum security rating
- DLC 5.0 compliant

COMMISSIONING & INSTALLATION TOOLS

Avi-on mobile apps provide intuitive, quick installation and commissioning. Pro tools are available to qualified installers. Live commissioning training and on-site or remote support by Avi-on must be ordered separately through Avi-on.



Commissioning Mobile App



Zone Scanner Web App



Commissioning Pro App

SYSTEM COMPONENTS



The Bluetooth® word mark and logos are registered trademarks owned by Bluetooth SIG, Inc. and any use of such marks by Avi-on is under license. Other trademarks and trade names are those of their respective owners.

ACCESSORIES


WALL STATIONS	
AVI-2401AC	Scene controller - numbered 1-4, 120-277VAC
AVI-2402BAT	Scene controller - numbered 1-4, battery powered
AVI-2401AC-2	Dimmer with presets - percentages, 120-277VAC
AVI-2402BAT-2	Dimmer with presets - percentages, battery powered
AVI-2401AC-3	On/off/dimming, 120-277VAC
AVI-2402BAT-3	On/off/dimming, battery powered

NETWORK	
AVI-RAB-LTE	Remote access bridge
AVI-KIT-NTM	Network time manager with battery backup
CEILING MOUNT SENSORS	
AVI-KIT-SEN-DUCM	PIR motion and ultrasonic sensor kit
AVI-KIT-SEN-ICM	PIR motion and photocell sensor kit

For load controllers and additional accessory info, see hew.com/avi-on

AVI-LVFA-CS2-PIR Avi-on wireless fixture control with PIR motion and daylight sensor. DA Driver only.

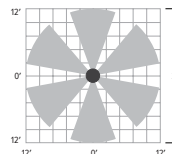
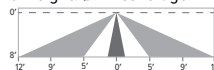
SPECIFICATIONS	
TYPE	PIR Motion + Daylight
MOUNTING HEIGHT	8' – 10'
DETECTION ANGLE	360°
TEMPERATURE RANGE	-30° to 50°C
RELATIVE HUMIDITY	10 to 80% non-condensing
IP RATING	IP20
MANUFACTURER	Avi-On



SENSOR COVERAGE PATTERNS

Side View

8' height: ø24' coverage



SENSOR DETAIL



Dimensions: 13/16" x 2-1/4"



MX4S^{LED} 4" Continuous – Surface

ADDITIONAL CONTROL OPTIONS

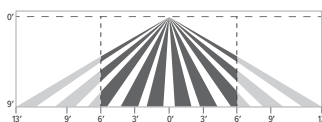
AWNS Lutron Athena wireless node integral fixture control, RF with daylight and occupancy sensing. DA and DSR Drivers only.

SPECIFICATIONS	
TYPE	Radio Frequency
MOUNTING HEIGHT	8' – 12'
DETECTION ANGLE	360°
TEMPERATURE RANGE	0° to 55°C
RELATIVE HUMIDITY	0 to 90%, non-condensing
COMMISSIONING	Clear Connect gateway – Type X with app (iOS or Android)
MANUFACTURER	Lutron



SENSOR COVERAGE PATTERNS

9' height: ø12' coverage



Motion Sensor Coverage

CEILING HEIGHT	COVERAGE AREA (SQ FT)
8'	114
9'	144
10'	178
12'	256

SENSOR DETAIL



Dimensions: ø1-1/8"

ATHENA CONTROL OPTIONS

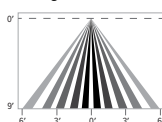
CATALOG NUMBER	DESCRIPTION
AWNRR	Lutron Athena wireless node integral fixture control, RF only, for use with D4i DALI-2 or driver with 12V auxiliary power
AWNS	Lutron Athena wireless node integral fixture control, RF with daylight and occupancy sensing, for use with D4i DALI-2 or driver with 12V auxiliary power
AWNRR-BL	Lutron Athena wireless node integral fixture control, RF only, for use with D4i DALI-2 or driver with 12V auxiliary power, black finish
AWNS-BL	Lutron Athena wireless node integral fixture control, RF with daylight and occupancy sensing, for use with D4i DALI-2 or driver with 12V auxiliary power, black finish

VDO Lutron Vive integral fixture control, RF with daylight and occupancy sensor (DFCSJ-OEM-OCC). DSR or LDE Drivers only. LDE drivers require driver interface

SPECIFICATIONS	
TYPE	PIR Motion + Daylight
MOUNTING HEIGHT	8' – 12'
DETECTION ANGLE	360°
TEMPERATURE RANGE	0° to 55°C
RELATIVE HUMIDITY	0 to 90%, non-condensing
COMMISSIONING	App (iOS or Android)
MANUFACTURER	Lutron

SENSOR COVERAGE PATTERNS

9' height: ø12' coverage



Motion Sensor Coverage

CEILING HEIGHT	COVERAGE AREA (SQ FT)
8'	114
9'	144
10'	178
12'	256

SENSOR DETAIL



Dimensions: 2-11/16" x 1"

VIVE CONTROL OPTIONS

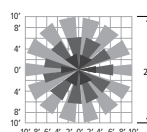
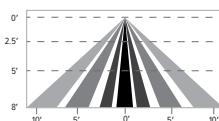
CATALOG NUMBER	DESCRIPTION
VRF	Lutron Vive integral fixture control, RF only (DFCSJ-OEM-RF), for use with sensor-ready driver
VDO	Lutron Vive integral fixture control, RF with daylight and occupancy sensor (DFCSJ-OEM-OCC), for use with sensor-ready driver
VRF/DBI	Lutron Vive integral fixture control, RF only (DFCSJ-OEM-RF) and digital link interface, for use with Lutron Hi-lume 1% EcoSystem dimming LED driver
VDO/DBI	Lutron Vive integral fixture control, RF with daylight and occupancy sensor (DFCSJ-OEM-OCC) and digital link interface, for use with Lutron Hi-lume 1% EcoSystem dimming LED driver

OCCWS-FS-305-L6-PP-120/277 Wattstopper PIR motion and daylight hold off sensor with power pack, 120/277V

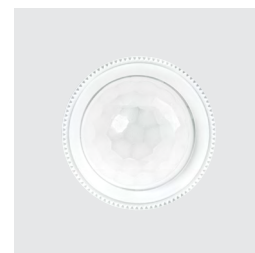
SPECIFICATIONS	
TYPE	PIR Motion + Daylight Hold Off
MOUNTING HEIGHT	8'
LENS	Indoor, non-wet location use
DETECTION ANGLE	360°
TEMPERATURE RANGE	-40° to 55°C
RELATIVE HUMIDITY	5% to 95%, non-condensing
COMMISSIONING	Dials under lens

SENSOR COVERAGE PATTERNS

8' height: ø20' coverage



SENSOR DETAIL



Dimensions: ø1-5/16"



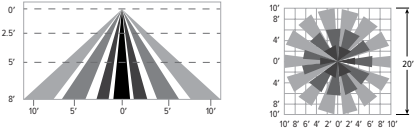
MX4S^{LED} 4" Continuous – Surface

OCCWS-LMFS-601-PP-120/277 Wattstopper PIR motion and daylight sensor with power pack, 120/277V

SPECIFICATIONS	
TYPE	PIR Motion + Daylight
MOUNTING HEIGHT	8' – 12'
LENS	Up to 300 sq/ft coverage
DETECTION ANGLE	360°
TEMPERATURE RANGE	0° to 50°C
RELATIVE HUMIDITY	0 to 90%, non-condensing
COMMISSIONING	App (iOS or Android)

SENSOR COVERAGE PATTERNS

8' height: ø20' coverage



SENSOR DETAIL



Dimensions: ø1-5/16"

ADDITIONAL DRIVER OPTIONS

Note: Lumen restrictions apply, consult product builder at hew.com/product-builder.

CATALOG NUMBER	DESCRIPTION
DRV	Driver prewired for non-dimming applications
DIM	Dimming driver prewired for 0-10V low voltage applications
DIM1	1% dimming driver prewired for 0-10V low voltage applications
DIM LINE	Line voltage dimming driver (TRIAC and ELV compatible, 120V only)
DIM TRC	Line voltage dimming driver (TRIAC compatible, 120V only)
DA	Driver with 12V auxiliary power
DSR	Sensor-ready driver (D4i DALI-2)
SD40	40% step-dimming driver
SD50	50% step-dimming driver
DALI	DALI dimming driver
LDE1	Lutron Hi-lume 1% EcoSystem dimming LED driver

