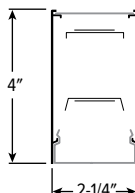
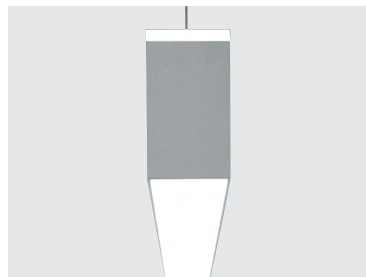


MX2UD^{LED} 2" Continuous Up/Down – Suspended



CATALOG #: _____

TYPE: _____

PROJECT: _____



ORDERING EXAMPLE: MX2UD - 12'00 - L8/835U/L8/835D - F/F - AC/D48 - OPTIONS - CONTROL/DIM - UNV

SERIES ILLUMINATED LENGTH

MX2UD Lengths specified in feet and inches using 1" increments, 2" minimum.
Example: 12'00 = 12'-0"

Product Builder

Easily build shapes & simplify ordering with the Williams Linear Product Builder at hew.com/product-builder ^[3]



LUMEN PACKAGE (EXAMPLE: L8/835U/L8/835D)

Specify lumen packages: **U** for Uplight and **D** for Downlight

	LUMENS ^[1]	CRI	CCT	U or D
L4	400lm	80	27 2700K	U Uplight
L8	800lm	90 ^[2]	30 3000K	D Downlight
L12	1200lm		35 3500K	
L20	2000lm		40 4000K	
			50 5000K	

SHIELDING UP

- F** Flat, diffuse acrylic
- FW** Flat, diffuse acrylic with widespread optic
- FA** Flat, diffuse acrylic with asymmetric optic
- G** Diffuse acrylic with glowing edge ^[6]

SHIELDING DOWN

- F** Flat, diffuse acrylic
- FW** Flat, diffuse acrylic with widespread optic
- G** Diffuse acrylic with glowing edge ^[7]
- D** Diffuse acrylic with 1" drop ^[8]
- R** Regressed diffuse acrylic, 1" ^[9]

MOUNTING (EXAMPLE: AC/D48) ^[4]

Prefix	Type	Length
AC/	D 1" grid & hardpan	24 24"
	N 9/16" grid	48 48"
	S Slot grid	96 96"
MSF_	Microstem, 1/4" IPS, specify length in inches ^[5]	

OPTIONS

See page 4 for *FINISH OPTIONS*.

- EM/10WLP** Low-profile 10-watt emergency battery ^[10]
- EM/10WRM** Remote mount 10-watt emergency battery ^[11]
- (L_)** Additional lower lumen packages available ^[12]
Example: 600 lumens = MX2UD-12'00-L8/835U/L8/835D-(L6U/L6D)

CONTROL ^[13]

See page 6 for *ADDITIONAL CONTROL OPTIONS*.

- None
- AVI-LVFA** Avi-on wireless fixture control ^[14]
- AVI-LVFA-CS2-PIR** Avi-on wireless fixture control with PIR motion and daylight sensor ^[15]
- AWNRR** Lutron Athena wireless node integral fixture control, RF only ^[16]
- AWNRS** Lutron Athena wireless node integral fixture control, RF with daylight and occupancy sensing ^[17]

DRIVER

See page 7 for *ADDITIONAL DRIVER OPTIONS*.

- DIM** Driver with external dimming wires. Up and down switch and dim together
- DA** Driver with 12V auxiliary power without external dimming wires. Up and down switch together ^[18]
- DSR** Sensor-ready driver without external dimming wires (D4i DALI-2). Up and down switch together ^[19]

VOLTAGE

- 120** 120V
- 277** 277V
- UNV** 120-277V
- 347** 347V ^[20]

NOTES

- ¹ Lumens per foot output based on F Shielding, 80 CRI/3500K CCT. Actual performance may vary $\pm 5\%$. 2000 lumens per foot maximum. See page 2 for *FIXTURE PERFORMANCE DATA*. Additional lumen packages available, see Options.
- ² Extended lead times may apply. Consult factory for availability.
- ³ See page 4 for *CORNER DETAILS*.
- ⁴ See page 4 for *MOUNTING DETAILS*.
- ⁵ Power cord does not run through microstem.
- ⁶ Not available with corner configurations
- ⁷ Not available with corner configurations
- ⁸ Not available with corner configurations

- ⁹ Not available with corner configurations. Increases fixture height. See page 3 for *SHIELDING DETAILS*.
- ¹⁰ Not available with fixture less than 4', maximum combined lumens cannot exceed 1600 per foot.
- ¹¹ See page 4 for *MOUNTING DETAILS*.
- ¹² (L3U/L3D) lumen package minimum. Specify in increments of 100 nominal lumens. Option must be specified with next higher lumen package.
- ¹³ Sensors not available in fixtures less than 48". Sensor recommended for use in downlight orientation only. Reduces portion of lit fixture, consult factory. See page 5 for *AVI-ON BLUETOOTH WIRELESS CONTROL DETAILS*. See page 4 for *SENSOR & NODE PLACEMENT DETAILS*.

- ¹⁴ DA Driver only.
- ¹⁵ DA Driver only.
- ¹⁶ DA and DSR Drivers only.
- ¹⁷ DA and DSR Drivers only.
- ¹⁸ Avi-on and Lutron Athena Controls only.
- ¹⁹ Lutron Athena Controls only.
- ²⁰ Not available with EM batteries, control sensors, DA, or DSR Drivers.



MX2UD^{LED} 2" Continuous Up/Down – Suspended

FEATURES

- Create elegant spaces with a seamless, continuous row of illumination
- Specify in one inch increments to create a perfect fit
- Flat, glowing edge, drop and regressed lenses give designers a variety of looks
- Moveable mounting hardware easily slides along the length of the fixture providing variable mounting points for continuous rows
- High-performance up to 126 lm/W
- Linear extrusion contains snap-in light rails for ease of installation and maintenance
- Factory installed row alignment system creates straight rows with ease
- Versatile MX2 system includes recessed, surface, suspended and in-wall mounting, see hew.com
- Corner configurations available, see Product Builder at hew.com/product-builder
- Wireless in-fixture control solutions available
- Available with BIOS® SkyBlue® technology to support proper daytime circadian stimulus
- Made Right Here® in the USA

SPECIFICATIONS

- HOUSING – Extruded aluminum with die-cast end plates.
- SHIELDING – Extruded, flat, diffuse acrylic lens.
- FINISH – Textured matte white polyester TGIC powder coat bonded to phosphate-free, multi-stage pretreated metal. All parts painted after fabrication to facilitate installation, increase efficiency, and inhibit corrosion.
- ELECTRICAL – High-quality mid-power LED boards. Reported L70: >54,000 hours. Reported L90: 52,000 hours. Estimated L70: 170,000 hours. 25°C maximum ambient operating temperature.
- MOUNTING – Suspended. 1/16" diameter adjustable steel leveling aircraft cable and mounting hardware necessary for grid and hardpan ceiling applications provided.
- LISTINGS –
 - cCSAus certified as luminaire suitable for dry or damp locations.
 - Complies with the Buy American Act and other federal regulations. Request certification at hew.com/baa.
- WARRANTY – 5-year limited warranty, see hew.com/warranty.

FIXTURE PERFORMANCE DATA

	PER FOOT (2000 LUMENS PER FOOT MAXIMUM)				
	DELIVERED LUMENS			TOTAL WATTAGE	EFFICACY (lm/W)
	UP	DOWN	TOTAL		
L4/835U/L4/835D	417	376	793	6.8	117
L4/835U/L8/835D	417	752	1168	10.1	116
L8/835U/L4/835D	834	376	1210	10.1	120
L8/835U/L8/835D	834	752	1585	13.4	118
L8/835U/L12/835D	834	1127	1961	16.2	121
L4/835U/L12/835D	417	1127	1544	13.5	114
L12/835U/L4/835D	1251	376	1627	13.5	121
L12/835U/L8/835D	1251	752	2002	15.9	126

- Photometrics tested in accordance with IESNA LM-79. Results based on F shielding for Up and Down compartments, 80 CRI/3500K CCT, average wattage for 120V through 277V input, and 25°C ambient temperature. Actual performance may vary +/-5%.
- To calculate lumen output in emergency mode, multiply the battery wattage by the efficacy.
- Use multiplier tables to calculate additional options.

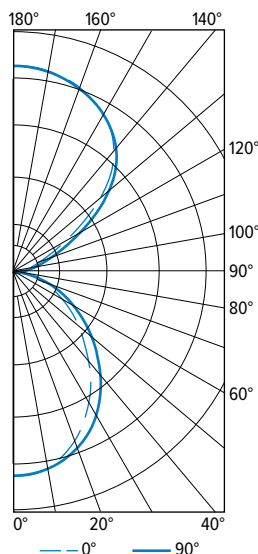
MULTIPLIER TABLES

	COLOR TEMPERATURE	
	CCT	CONVERSION FACTOR
80 CRI	2700K	0.97
	3000K	0.99
	3500K	1.00
	4000K	1.03
	5000K	1.06
90 CRI	2700K	0.80
	3000K	0.82
	3500K	0.83
	4000K	0.86
	5000K	0.89

SHIELDING	
LENS	CONVERSION FACTOR
D	1.05
F	1.00
G	0.98
FA	0.96
FW	0.92
R	0.91

PHOTOMETRY

MX2UD-4'00-L8/835U/L8/835D-A/F-DIM Total Luminaire Output: 6341 lumens; 53.6 Watts | Efficacy: 118 lm/W | 80 CRI; 3500K CCT



VERTICAL ANGLE	HORIZONTAL ANGLE			ZONAL LUMENS
	0°	45°	90°	
0	1354	1354	1354	
5	1343	1344	1348	128
15	1277	1268	1246	357
25	1147	1110	1063	511
35	954	899	845	563
45	734	672	615	522
55	523	476	431	428
65	336	303	274	303
75	168	155	143	166
85	40	44	45	50
90	2	5	4	
95	44	30	25	37
105	147	112	98	127
115	306	258	214	262
125	585	538	470	477
135	892	861	836	661
145	1097	1090	1087	681
155	1228	1230	1224	567
165	1314	1319	1321	373
175	1362	1358	1367	130
180	1367	1367	1367	

LUMEN SUMMARY	ZONE	LUMENS	% FIXTURE
	0 - 30	996	16
	0 - 40	1559	25
	0 - 60	2509	40
	0 - 90	3027	48
	90 - 120	426	7
	90 - 130	903	14
	90 - 150	2246	35
	90 - 180	3150	50
	0 - 180	6341	100

PHOTOMETRY CONTINUED ON NEXT PAGE



H.E. Williams, Inc.

Carthage, Missouri

www.hew.com

417-358-4065

Designed and Manufactured in the USA

Information contained herein is subject to change without notice.

REV.01/04/24.JL

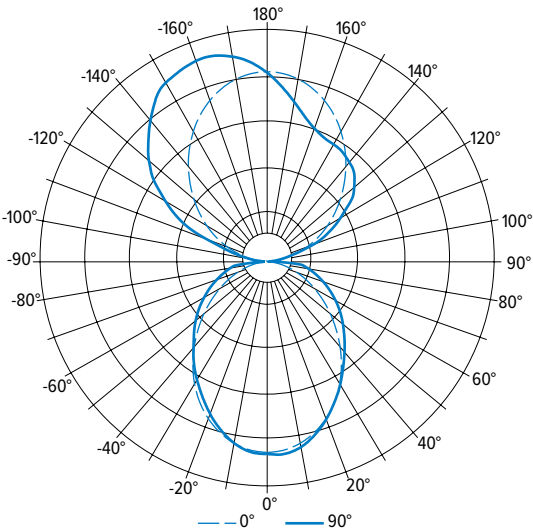
Continuous

Page 2 of 7

MX2UD^{LED}

2" Continuous Up/Down – Suspended

MX2UD-4'00-L8/835U/L8/835D-FA/D-DIM Total Luminaire Output: 5884 lumens; 50.7 Watts | Efficacy: 116 lm/W | 80 CRI; 3500K CCT



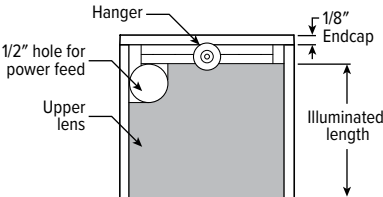
VERTICAL ANGLE	HORIZONTAL ANGLE					ZONAL LUMENS
	0°	45°	90°	135°	180°	
0	1083	1083	1083	1083	1083	
5	1068	1080	1090	1080	1068	76
15	1005	1021	1019	1021	1005	162
25	889	901	888	901	889	215
35	731	750	745	750	731	233
45	555	599	618	599	555	222
55	390	467	505	467	390	193
65	245	347	393	347	245	150
75	122	237	288	237	122	101
85	32	142	190	142	32	33
90	7	21	22	21	7	
95	33	26	20	26	33	35
105	160	186	147	186	160	128
115	310	368	377	368	310	222
125	460	541	563	541	460	277
135	613	647	696	647	613	288
145	767	712	749	712	767	261
155	905	764	769	764	905	201
165	1008	873	841	873	1008	122
175	1066	1003	989	1003	1066	25
180	1066	1066	1066	1066	1066	

LUMEN SUMMARY	ZONE	LUMENS	% FIXTURE
	0 - 40	1256	21
	0 - 60	2110	36
	0 - 90	2767	47
	90 - 180	3117	53

FIXTURE DETAILS

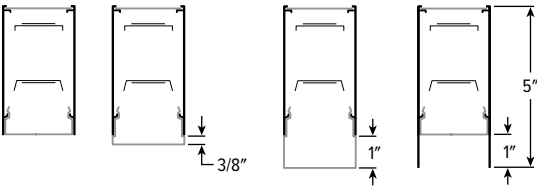
Stand-alone fixtures up to 12' in length will require two suspension cables.

BACK VIEW



SHIELDING DETAILS

FLAT



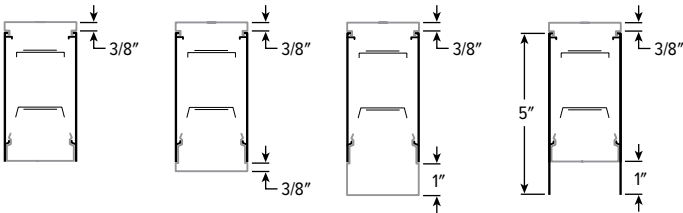
FLAT

GLOWING EDGE

DROP

REGRESSED

GLOWING EDGE



FLAT

GLOWING EDGE

DROP

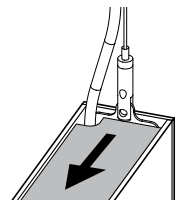
REGRESSED



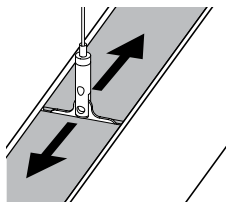
MX2UD^{LED} 2" Continuous Up/Down – Suspended

MOUNTING DETAILS

AIRCRAFT CABLE

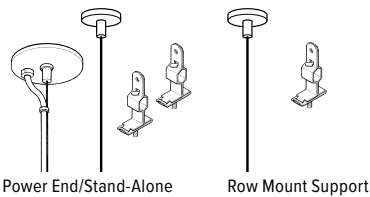


Field-adjustable standalone hanger.



Joiner hanger slides to any position along extrusion. Lens may be cut to fit hanger.

STANDARD HARDWARE



Power End/Stand-Alone

Row Mount Support

Notes:

- Fixtures are provided with adjustable length aircraft cables and mounting hardware, must specify.
- Electrical supply is brought into the feeder (or stand-alone) fixture, either as part of a row or as an individual mount unit. Power feed locations are at end of fixture.
- One 5" canopy included for each feeder fixture. One 2" canopy included for each additional fixture required in a row.

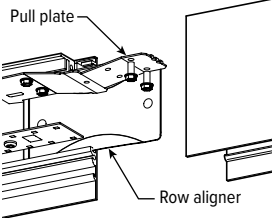
AIRCRAFT CABLE



MICROSTEM



ROW ALIGNMENT SYSTEM



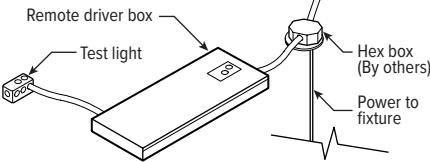
Pull plate

Row aligner

Installer friendly row aligners ensure seamless joining between fixtures while factory installed pull plate locks extrusions in place without disassembly of fixture internals.

REMOTE MOUNT BATTERY

Max remote distance 50'.



Remote driver box

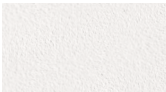
Test light

Hex box (By others)

Power to fixture

FINISH OPTIONS

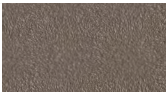
WHITE



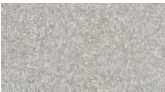
BLACK



BRONZE



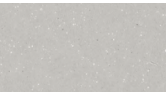
NICKEL



SILVER



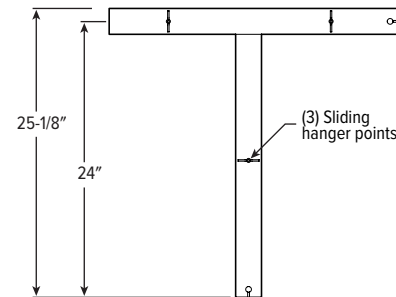
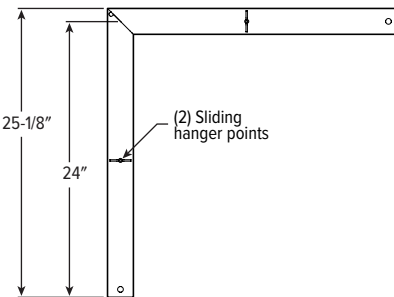
ALUM



For custom color, please specify RAL code or a manufacturer code with description. All custom colors other than RAL require two sample swatches, minimum 1" square.

CORNER DETAILS

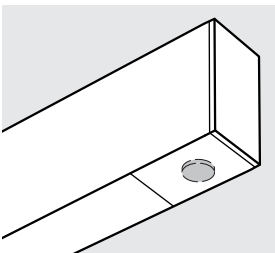
BACK VIEW



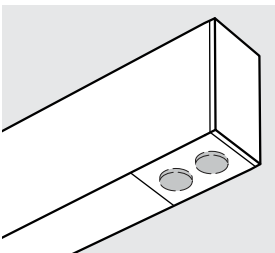
Note: Corner orientation determined in field. Feeder corner end cap shipped separately.

SENSOR & NODE PLACEMENT DETAILS

AVI-LVFA | WS-FS | WS-LMFS



AWN-R | AWNS



H.E. Williams, Inc.

Carthage, Missouri

www.hew.com

417-358-4065

Designed and Manufactured in the USA

REV.01/04/24.JL

Continuous
Page 4 of 7

MX2UD^{LED} 2" Continuous Up/Down – Suspended

AVI-ON BLUETOOTH WIRELESS CONTROL DETAILS

FEATURES

Simple

- Gateway-free distributed control
- Factory pre-commissioning
- Contractor friendly installation
- Occupancy/vacancy/daylight sensing

Scalable

- Virtually unlimited network size
- Spans small offices to large warehouses
- Flexible control strategies

Secure

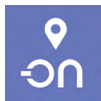
- Optional cloud connectivity
- UL IoT platinum security rating
- DLC 5.0 compliant

COMMISSIONING & INSTALLATION TOOLS

Avi-on mobile apps provide intuitive, quick installation and commissioning. Pro tools are available to qualified installers. Live commissioning training and on-site or remote support by Avi-on must be ordered separately through Avi-on.



Commissioning
Mobile App

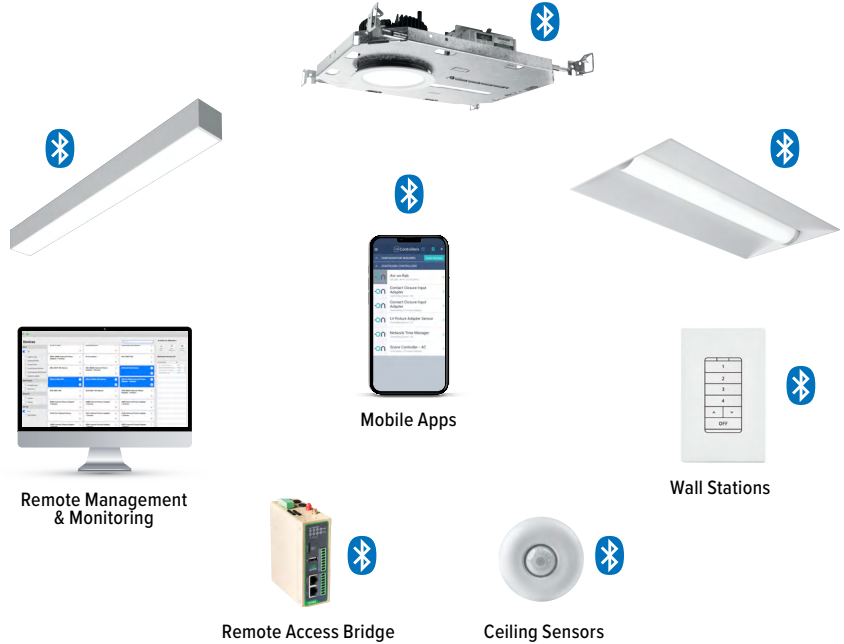


Zone Scanner
Web App



Commissioning
Pro App

SYSTEM COMPONENTS



The Bluetooth® word mark and logos are registered trademarks owned by Bluetooth SIG, Inc. and any use of such marks by Avi-on is under license. Other trademarks and trade names are those of their respective owners.

ACCESSORIES

WALL STATIONS	
AVI-2401AC	Scene controller - numbered 1-4, 120-277VAC
AVI-2402BAT	Scene controller - numbered 1-4, battery powered
AVI-2401AC-2	Dimmer with presets - percentages, 120-277VAC
AVI-2402BAT-2	Dimmer with presets - percentages, battery powered
AVI-2401AC-3	On/off/dimming, 120-277VAC
AVI-2402BAT-3	On/off/dimming, battery powered

NETWORK	
AVI-RAB-LTE	Remote access bridge
AVI-KIT-NTM	Network time manager with battery backup
CEILING MOUNT SENSORS	
AVI-KIT-SEN-DUCM	PIR motion and ultrasonic sensor kit
AVI-KIT-SEN-ICM	PIR motion and photocell sensor kit

For load controllers and additional accessory info, see hew.com/avi-on

AVI-LVFA-CS2-PIR Avi-on wireless fixture control with PIR motion and daylight sensor. DA Driver only.

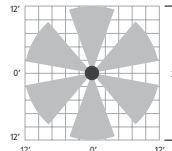
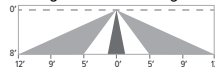
SPECIFICATIONS	
TYPE	PIR Motion + Daylight
MOUNTING HEIGHT	8' – 10'
DETECTION ANGLE	360°
TEMPERATURE RANGE	-30° to 50°C
RELATIVE HUMIDITY	10 to 80% non-condensing
IP RATING	IP20
MANUFACTURER	Avi-On

Bluetooth® Lighting Controls

SENSOR COVERAGE PATTERNS

Side View

8' height: ø24' coverage



SENSOR DETAIL



Dimensions: 13/16" x 2-1/4"



MX2UD^{LED} 2" Continuous Up/Down – Suspended

ADDITIONAL CONTROL OPTIONS

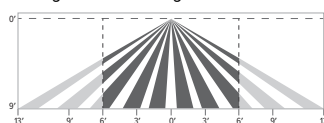
AWNS Lutron Athena wireless node integral fixture control, RF with daylight and occupancy sensing. DA and DSR Drivers only.

SPECIFICATIONS	
TYPE	Radio Frequency
MOUNTING HEIGHT	8' – 12'
DETECTION ANGLE	360°
TEMPERATURE RANGE	0° to 55°C
RELATIVE HUMIDITY	0 to 90%, non-condensing
COMMISSIONING	Clear Connect gateway – Type X with app (iOS or Android)
MANUFACTURER	Lutron



SENSOR COVERAGE PATTERNS

9' height: ø12' coverage



Motion Sensor Coverage

CEILING HEIGHT	COVERAGE AREA (SQ FT)
8'	114
9'	144
10'	178
12'	256

SENSOR DETAIL



Dimensions: ø1-1/8"

ATHENA CONTROL OPTIONS

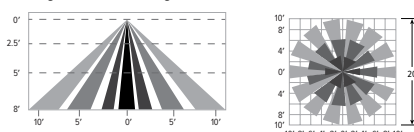
CATALOG NUMBER	DESCRIPTION
AWNDR	Lutron Athena wireless node integral fixture control, RF only, for use with D4i DALI-2 or driver with 12V auxiliary power.
AWNS	Lutron Athena wireless node integral fixture control, RF with daylight and occupancy sensing, for use with D4i DALI-2 or driver with 12V auxiliary power.
AWNDR-BL	Lutron Athena wireless node integral fixture control, RF only, for use with D4i DALI-2 or driver with 12V auxiliary power, black finish.
AWNS-BL	Lutron Athena wireless node integral fixture control, RF with daylight and occupancy sensing, for use with D4i DALI-2 or driver with 12V auxiliary power, black finish.

OCCWS-FS-305-L6-PP-120/277 Wattstopper PIR motion and daylight hold off sensor with power pack, 120/277V

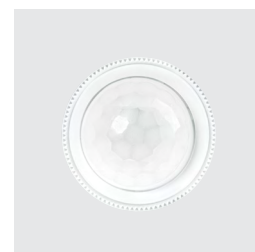
SPECIFICATIONS	
TYPE	PIR Motion + Daylight Hold Off
MOUNTING HEIGHT	8'
LENS	Indoor, non-wet location use
DETECTION ANGLE	360°
TEMPERATURE RANGE	-40° to 55°C
RELATIVE HUMIDITY	5% to 95%, non-condensing
COMMISSIONING	Dials under lens

SENSOR COVERAGE PATTERNS

8' height: ø20' coverage



SENSOR DETAIL



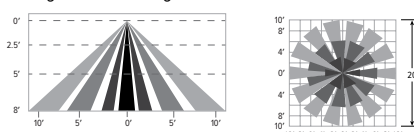
Dimensions: ø1-5/16"

OCCWS-LMFS-601-PP-120/277 Wattstopper PIR motion and daylight sensor with power pack, 120/277V

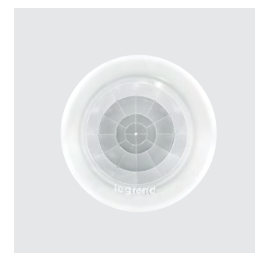
SPECIFICATIONS	
TYPE	PIR Motion + Daylight
MOUNTING HEIGHT	8' – 12'
LENS	Up to 300 sq/ft coverage
DETECTION ANGLE	360°
TEMPERATURE RANGE	0° to 50°C
RELATIVE HUMIDITY	0 to 90%, non-condensing
COMMISSIONING	App (iOS or Android)

SENSOR COVERAGE PATTERNS

8' height: ø20' coverage



SENSOR DETAIL



Dimensions: ø1-5/16"



MX2UD^{LED} 2" Continuous Up/Down – Suspended

ADDITIONAL DRIVER OPTIONS

Note: Lumen restrictions apply, consult product builder at hew.com/product-builder.

CATALOG NUMBER	DESCRIPTION
DIM	Dimming driver prewired for 0-10V low voltage applications; entire fixture switches and dims together
DRVU/DIMD	Driver prewired for non-dimming applications; up and down portions switch separately; 0-10V on down portion only ^[2]
DIMU/DRVU	Up and down portions switch separately; dimming driver prewired for 0-10V low voltage applications on up portion only ^{[1] [2]}
DIMU/DIMD	Dimming driver prewired for 0-10V low voltage applications; up and down portions switch and dim separately ^[2]
DRVU/DIMU	Entire fixture switches together; dimming driver prewired for 0-10V low voltage applications on up portion only ^[2]
DRVU/DIMD	Entire fixture switches together; dimming driver prewired for 0-10V low voltage applications on down portion only ^[2]
DIM1	1% dimming driver prewired for 0-10V low voltage applications
DIM LINE	Line voltage dimming driver (TRIAC and ELV compatible, 120V only)
DIM TRC	Line voltage dimming driver (TRIAC compatible, 120V only)
DIM LINEU/DIM LINED	Line voltage switching and line voltage dimming; up and down portions switch separately
DIM LINEU/DRVU	Up and down portions switch separately; line voltage dimming on up portion only ^[1]
DRVU/DIM LINED	Up and down portions switch separately; line voltage dimming on down portion only ^[1]
DA	Driver with 12V auxiliary power without external dimming wires. Up and down switch together.
DA-U/D	Driver with 12V auxiliary power without external dimming wires. Up and down switch separately.
DSR	Sensor-ready driver without external dimming wires (D4i DALI-2). Up and down switch together.
DSR-U/D	Sensor-ready driver without external dimming wires (D4i DALI-2). Up and down switch separately.

¹ Length restrictions may apply, consult factory.

² Not available with L4U/L4D lumen package in fixtures less than 36" long.

