

CATALOG #: _____

Type: _____

PROJECT: _____



FEATURES

- Designed to deliver subtle area lighting with minimal glare for offices, classrooms, and general applications
- Flush (F) frame level option with frosted acrylic lens (AF125) creates the appearance of an unobtrusive and simple line of light – a perfect complement to unique design applications
- Fixture is Armstrong TechZone™ and USG Logix™ ceiling systems compatible
- Wireless in-fixture control solutions available
- Made Right Here® in the USA

SPECIFICATIONS

- HOUSING** – 22-gauge die-formed C.R.S.
- SHIELDING** – Steel door frame with integral torsion springs to secure the frame within the fixture, .125" thick frosted acrylic.
- FINISH** – 92% minimum average reflective white powder polyester coat bonded to phosphate-free, multi-stage pretreated metal. All parts painted after fabrication to facilitate installation, increase efficiency, and inhibit corrosion.
- ELECTRICAL** – High-quality mid-power LED boards. Rated for 50,000 hours at 70% lumen maintenance (L70). L70 >50,000 hours.
- MOUNTING** – NEMA Type "G" 15/16" or 1" grid standard. For NEMA Type "NFG" and "SG" 9/16" grid installations, specify EQCLIPS option. Drywall flange kits available, shipped separately, see options. Fixture must be installed prior to Drywall Kit.
- LISTINGS** –
 - cCSAus certified as luminaire suitable for dry or damp locations.
 - Complies with the Buy American Act and other federal regulations. Request certification at hew.com/baa.
- WARRANTY** – 5-year limited warranty, see hew.com/warranty.

ORDERING EXAMPLE: LL6 G - 4 - L34/835 - SWF/AF125 - OPTIONS - CONTROL/DIM - UNV

ORDERING INFO

SERIES	CEILING TYPE	LUMENS ^[1]	CRI	CCT	SHIELDING
LL6	G 9/16", 15/16", or 1" grid ^[2]	2'	8 80	27 2700K	SWF/AF125 Steel, flush white frame with frosted acrylic, .125" thick
		L16 1,600lm	9 90 ^[3]	30 3000K	
		L38 3,800lm		35 3500K	SWT/AF125 Steel, tegular white frame with frosted acrylic, .125" thick
		3'		40 4000K	
		L26 2,600lm		50 5000K	
		L50 5,000lm			
		4'			
		L34 3,400lm			
		L76 7,600lm			
		5'			
		L42 4,200lm			
		L85 8,500lm			

OPTIONS

EM/10W	10-watt emergency driver ^[5]
EQCLIPS	Earthquake clips ^[6]
(L__)	Additional lower lumen packages available. Example: 4,000 nominal lumens = LL6G-4-L34/850-(L40). ^[7]
DFK-0624W	Drywall kit, 6" x 24" ^[8]
DFK-0636W	Drywall kit, 6" x 36" ^[9]
DFK-0648W	Drywall kit, 6" x 48" ^[10]
DFK-0660W	Drywall kit, 6" x 60" ^[11]

CONTROL ^[4]

See page 5 for ADDITIONAL CONTROL OPTIONS.

–	None
AVI-LVFA	Avi-on wireless fixture control ^[12]
AVI-LVFA-CS2-PIR	Avi-on wireless fixture control with PIR motion and daylight sensor ^[13]
AWN	Lutron Athena wireless node integral fixture control, RF only ^[14]
AWNS	Lutron Athena wireless node integral fixture control, RF with daylight and occupancy sensing ^[15]

DRIVER

See page 5 for ADDITIONAL DRIVER OPTIONS.

DIM	Driver with external dimming wires
DRV	Driver without external dimming wires
DA	Driver with 12V auxiliary power, without external dimming wires ^[16]
DSR	Sensor-ready driver without external dimming wires (D4i DALI-2) ^[17]

VOLTAGE

120	120V
277	277V
UNV	120-277V
347	347V ^[18]

NOTES

- Lumen output based on 80 CRI/3500K CCT. Actual performance may vary +/-5%. See page 2 for FIXTURE PERFORMANCE DATA.
- Must specify EQCLIPS option when 9/16" grid mounting.
- Extended lead times may apply. Consult factory for availability.
- See page 4 for AVI-ON BLUETOOTH WIRELESS CONTROL DETAILS. See page 3 for SENSOR & NODE PLACEMENT DETAILS.
- Not available with L16, L38, or L50 lumen stops.
- 2 per fixture. Optional for 1" grid installations. Required for 9/16" grid mounting.
- Specify in increments of 100 nominal lumens. Option must be specified with next higher lumen package.
- See page 3 for DRYWALL KIT (DFK) OPTIONS. Fixture must be installed prior to Drywall Kit.

- See page 3 for DRYWALL KIT (DFK) OPTIONS. Fixture must be installed prior to Drywall Kit.
- See page 3 for DRYWALL KIT (DFK) OPTIONS. Fixture must be installed prior to Drywall Kit.
- See page 3 for DRYWALL KIT (DFK) OPTIONS. Fixture must be installed prior to Drywall Kit.
- DA Driver only.
- DA Driver only.
- DA and DSR Drivers only.
- DA and DSR Drivers only.
- Avi-on and Lutron Athena Controls only.
- Lutron Athena Controls only.
- Not available with EM batteries, DA, or DSR drivers.



LL6^{LED} 6" Wide Linear Light

FIXTURE PERFORMANCE DATA

	LED PACKAGE	DELIVERED LUMENS	WATTAGE	EFFICACY (lm/W)
2'	L16	1,652	16.3	101
	L38	3,830	34.3	112
3'	L26	2,636	23.6	112
	L50	4,982	47.8	104
4'	L34	3,411	32.1	106
	L76	7,660	67.4	114
5'	L42	4,252	36.8	116
	L85	8,534	80.3	106

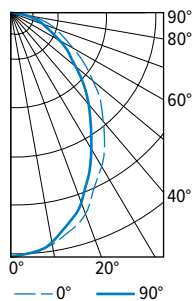
MULTIPLIER TABLE

COLOR TEMPERATURE		
	CCT	CONVERSION FACTOR
80 CRI	2700K	0.97
	3000K	0.99
	3500K	1.00
	4000K	1.03
	5000K	1.06
90 CRI	2700K	0.80
	3000K	0.82
	3500K	0.83
	4000K	0.86
	5000K	0.89

- Photometrics tested in accordance with IESNA LM-79. Results based on 80 CRI/3500K CCT, average wattage for 120V through 277V input, and 25°C ambient temperature. Actual performance may vary +/-5%.
- To calculate lumen output in emergency mode, multiply the battery wattage by the efficacy.
- Use multiplier table to calculate additional options.

PHOTOMETRY

LL6G-4-L34/835-SWF/AF125 Total Luminaire Output: 3411 lumens; 32.1 Watts | Efficacy: 106 lm/W | 80 CRI; 3500K CCT

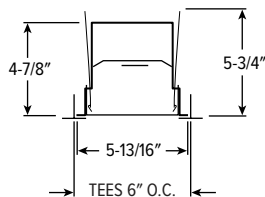


VERTICAL ANGLE	HORIZONTAL ANGLE			ZONAL LUMENS
	0°	45°	90°	
0	1662	1662	1662	
5	1652	1648	1646	156
15	1539	1516	1497	428
25	1334	1286	1235	594
35	1103	1026	954	641
45	850	765	694	589
55	580	513	460	464
65	361	318	285	318
75	179	156	141	171
85	50	44	41	50
90	0	0	0	

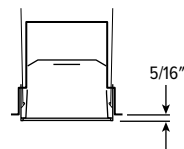
LUMEN SUMMARY	ZONE	LUMENS	% FIXTURE
	0 - 30	1177	35
	0 - 40	1818	53
	0 - 60	2872	84
	0 - 90	3411	100
	0 - 180	3411	100

CROSS SECTIONS

FLUSH LENS

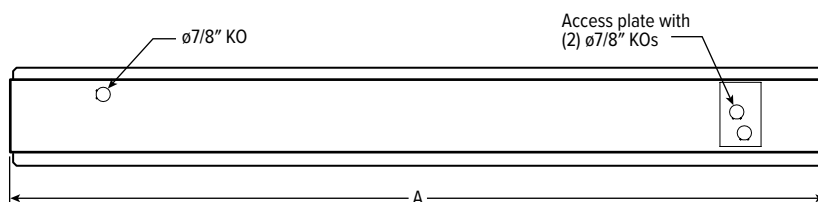


TEGULAR LENS



FIXTURE DETAILS

BACKVIEW



NOMINAL LENGTH	ACTUAL LENGTH (A)
2'	23-15/16"
3'	35-15/16"
4'	47-15/16"
5'	59-15/16"



LL6

LED
6" Wide Linear Light

DRYWALL KIT (DFK) OPTIONS

ORDERING INFO

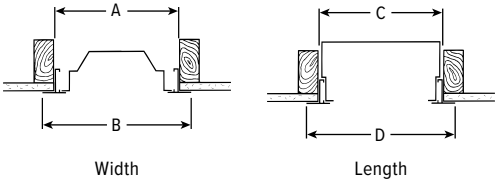
EXAMPLE: DFK - 06 24 W			
SERIES	WIDTH	LENGTH	FINISH
DFK Drywall kit	06 6"	24 2'	W White AMW Anti-microbial white
		36 3'	
		48 4'	
		60 5'	

INSTALLATION DIMENSIONS

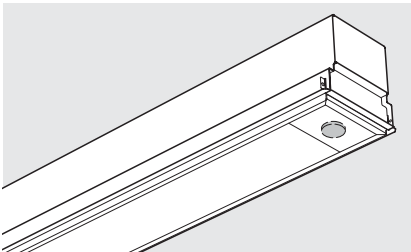
NOMINAL SIZE	ROUGH-IN		FINISH TRIM SIZE	
	WIDTH (A)	LENGTH (C)	WIDTH (B)	LENGTH (D)
6" x 2'	6-3/8"	24-3/8"	7-5/16"	25-5/16"
6" x 3'	6-3/8"	36-3/8"	7-5/16"	37-5/16"
6" x 4'	6-3/8"	48-3/8"	7-5/16"	49-5/16"
6" x 5'	6-3/8"	60-3/8"	7-5/16"	61-5/16"

TYPICAL INSTALLATION

Refer to table for dimensions.



SENSOR & NODE PLACEMENT DETAILS



SEE NEXT PAGE FOR CONTROL DETAILS.



LL6 LED 6" Wide Linear Light

AVI-ON BLUETOOTH WIRELESS CONTROL DETAILS

FEATURES

Simple

- Gateway-free distributed control
- Factory pre-commissioning
- Contractor friendly installation
- Occupancy/vacancy/daylight sensing

Scalable

- Virtually unlimited network size
- Spans small offices to large warehouses
- Flexible control strategies

Secure

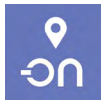
- Optional cloud connectivity
- UL IoT platinum security rating
- DLC 5.0 compliant

COMMISSIONING & INSTALLATION TOOLS

Avi-on mobile apps provide intuitive, quick installation and commissioning. Pro tools are available to qualified installers. Live commissioning training and on-site or remote support by Avi-on must be ordered separately through Avi-on.



Commissioning Mobile App

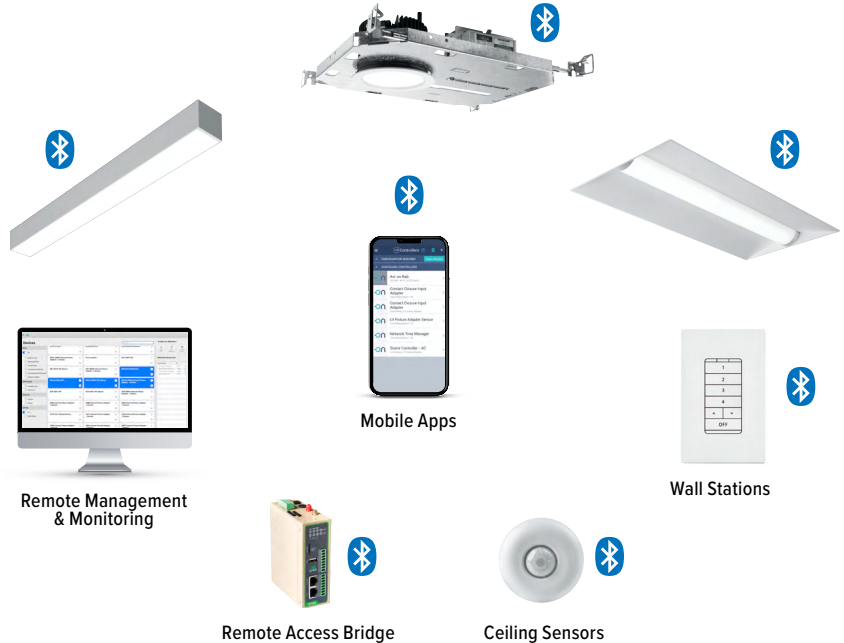


Zone Scanner Web App



Commissioning Pro App

SYSTEM COMPONENTS



The Bluetooth® word mark and logos are registered trademarks owned by Bluetooth SIG, Inc. and any use of such marks by Avi-on is under license. Other trademarks and trade names are those of their respective owners.


ACCESSORIES

WALL STATIONS	
AVI-2401AC	Scene controller - numbered 1-4, 120-277VAC
AVI-2402BAT	Scene controller - numbered 1-4, battery powered
AVI-2401AC-2	Dimmer with presets - percentages, 120-277VAC
AVI-2402BAT-2	Dimmer with presets - percentages, battery powered
AVI-2401AC-3	On/off/dimming, 120-277VAC
AVI-2402BAT-3	On/off/dimming, battery powered

NETWORK	
AVI-RAB-LTE	Remote access bridge
AVI-KIT-NTM	Network time manager with battery backup
CEILING MOUNT SENSORS	
AVI-KIT-SEN-DUCM	PIR motion and ultrasonic sensor kit
AVI-KIT-SEN-ICM	PIR motion and photocell sensor kit

For load controllers and additional accessory info, see hew.com/avi-on

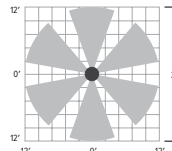
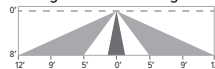
AVI-LVFA-CS2-PIR Avi-on wireless fixture control with PIR motion and daylight sensor. DA Driver only.

SPECIFICATIONS	
TYPE	PIR Motion + Daylight
MOUNTING HEIGHT	8' - 10'
DETECTION ANGLE	360°
TEMPERATURE RANGE	-30° to 50°C
RELATIVE HUMIDITY	10 to 80% non-condensing
IP RATING	IP20
MANUFACTURER	Avi-On
	

SENSOR COVERAGE PATTERNS

Side View

8' height: Ø24' coverage



SENSOR DETAIL




Dimensions: 13/16" x 2-1/4"



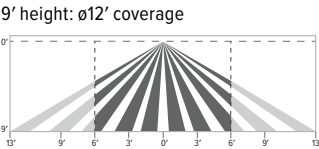
LL6 LED 6" Wide Linear Light

ADDITIONAL CONTROL OPTIONS

AWNS Lutron Athena wireless node integral fixture control, RF with daylight and occupancy sensing. DA and DSR Drivers only.

SPECIFICATIONS	
TYPE	Radio Frequency
MOUNTING HEIGHT	8' – 12'
DETECTION ANGLE	360°
TEMPERATURE RANGE	0° to 55°C
RELATIVE HUMIDITY	0 to 90%, non-condensing
COMMISSIONING	Clear Connect gateway – Type X with app (iOS or Android)
MANUFACTURER	Lutron
	

SENSOR COVERAGE PATTERNS



Motion Sensor Coverage

CEILING HEIGHT	COVERAGE AREA (SQ FT)
8'	114
9'	144
10'	178
12'	256

SENSOR DETAIL



Dimensions: ø1-1/8"

ATHENA CONTROL OPTIONS

CATALOG NUMBER	DESCRIPTION
AWNDR	Lutron Athena wireless node integral fixture control, RF only, for use with D4i DALI-2 or driver with 12V auxiliary power
AWNS	Lutron Athena wireless node integral fixture control, RF with daylight and occupancy sensing, for use with D4i DALI-2 or driver with 12V auxiliary power
AWNDR-BL	Lutron Athena wireless node integral fixture control, RF only, for use with D4i DALI-2 or driver with 12V auxiliary power, black finish
AWNS-BL	Lutron Athena wireless node integral fixture control, RF with daylight and occupancy sensing, for use with D4i DALI-2 or driver with 12V auxiliary power, black finish

ADDITIONAL DRIVER OPTIONS

Note: Lumen restrictions apply, consult product builder at hew.com/product-builder.

CATALOG NUMBER	DESCRIPTION
DRV	Driver prewired for non-dimming applications
DIM	Dimming driver prewired for 0-10V low voltage applications
DIM1	1% dimming driver prewired for 0-10V low voltage applications
DIM LINE	Line voltage dimming driver (TRIAC and ELV compatible, 120V only)
DIM TRC	Line voltage dimming driver (TRIAC compatible, 120V only)
DA	Driver with 12V auxiliary power
DSR	Sensor-ready driver (D4i DALI-2)
SD40	40% step-dimming driver
SD50	50% step-dimming driver
DALI	DALI dimming driver
LDE1	Lutron Hi-Lume 1% EcoSystem dimming LED driver

