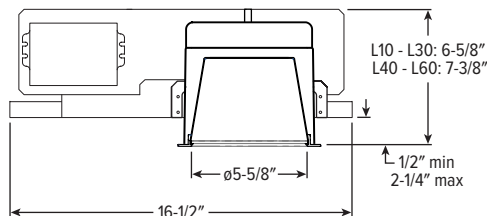
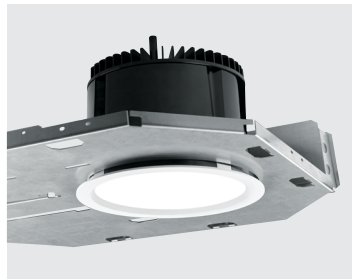


# HS6DR<sup>LED</sup> 6" MIL-Spec Surgical Downlight – Round



CATALOG #: \_\_\_\_\_

TYPE: \_\_\_\_\_

PROJECT: \_\_\_\_\_



## FEATURES

### TrimLock<sup>®</sup>

- Innovative TrimLock reflector retention system ensures trim remains flush with ceiling plane
- Complies with surgical suite specification MIL-STD-461G conducted emission regulations
- Designed to meet the demanding requirements of controlled environments
- Smooth surface trim and lens materials simplify cleaning and maintenance
- NSF-approved gasketing meets all required testing criteria for ISO 5, Class 100 certification
- Anti-microbial white finish is standard

## SPECIFICATIONS

- HOUSING** – Die-cast aluminum trim housing with forged aluminum heat sink. Galvanized steel splice compartment with driver mounting plate/enclosure. Swing-out mounting arms field adjust for ceiling thickness from 1/2" – 2-1/4".
- TRIM** – Die-cast aluminum frame with micro-prismatic, acrylic lens.
- DIE-CAST FINISH** – Textured anti-microbial matte white or black polyester TGIC powder coat bonded to phosphate-free, multi-stage pretreated metal.
- ELECTRICAL** – High-performance Class 2 C.O.B. LED array. Modular quick-connect plug for easy field-connection of LED light assembly to driver. Reported L70>55,000 hours. Reported L90>55,000 hours. Estimated L70 = 200,000 hours. Power factor may be lower than typical due to MIL-SPEC requirements, see fixture performance data.
- MOUNTING** – Recessed. 20 ga. galvanized steel mounting pan. Minimum 24" O.C. marked spacing required for L50 - L60 lumen packages. 10-1/2" minimum plenum height required for room-side access of driver/junction box.
- LISTINGS** –
  - cCSAus conforms to UL STD 1598; Certified to CAN/CSA STD C22.2 No. 250.0 for wet locations under covered ceiling. LED light assembly conforms to UL 2108 for remote installation.
  - IP65 rated
  - ISO 5, Class 100 rated
  - NSF/ANSI 2
  - Complies with MIL-STD-461G. Consult factory for remote driver installation.
  - Complies with ASTM-E283 when specified with ATH option.
  - RoHS compliant.
  - Complies with the Buy American Act and other federal regulations. Request certification at [hew.com/baa](http://hew.com/baa).
- WARRANTY** – 5-year limited warranty, see [hew.com/warranty](http://hew.com/warranty).

ORDERING EXAMPLE: **HS6DR - TL - L20/835 - OPTIONS - DIM - UNV - LW - OF - WH - TRIM OPTIONS - N - F1**

HOUSING TRIM MOUNT

## HOUSING

| SERIES                        | LUMENS <sup>(1)</sup> | CRI                        | CCT             | OPTIONS   | CONTROL   | VOLTAGE             |
|-------------------------------|-----------------------|----------------------------|-----------------|---|---|---------------------|
| <b>HS6DR - TL</b><br>TrimLock | <b>L10</b> 1,000lm    | <b>8</b> 80                | <b>27</b> 2700K | <b>ATH</b> Airtight construction                          | <b>DIM</b> Dimming driver<br>prewired for 0-10V low<br>voltage applications     | <b>UNV</b> 120-277V |
|                               | <b>L15</b> 1,500lm    | <b>9</b> 90 <sup>(2)</sup> | <b>30</b> 3000K | <b>F</b> Fuse   |   |                     |
|                               | <b>L20</b> 2,000lm    |                            | <b>35</b> 3500K | <b>EM/7W</b> 7-watt emergency<br>battery <sup>(3)</sup>   | <b>DIM1</b> 1% dimming driver<br>prewired for 0-10V low<br>voltage applications |                     |
|                               | <b>L30</b> 3,000lm    |                            | <b>40</b> 4000K |   |   |                     |
|                               | <b>L40</b> 4,000lm    |                            | <b>50</b> 5000K | <b>EM/10W</b> 10-watt emergency<br>battery <sup>(4)</sup> |   |                     |
|                               | <b>L50</b> 5,000lm    |                            |                 |   |   |                     |
|                               | <b>L60</b> 6,000lm    |                            |                 |   |   |                     |

## TRIM

| TRIM TYPE               | DISTRIBUTION <sup>(5)</sup>    | FLANGE TYPE                       | REFLECTOR FINISH  | TRIM OPTIONS   |
|-------------------------|--------------------------------|-----------------------------------|---|--|
| <b>L</b> Flush lens     | <b>W</b> Wide                  | <b>OF</b> 1/2" standard<br>flange | <b>WH</b> White texture powder coat                               | <b>AD</b> Diffuse acrylic lens <sup>(9)</sup>                |
| <b>R</b> Regressed lens | <b>55°</b> Flush               |                                   | <b>BL</b> Black texture powder coat                               | <b>PD</b> Diffuse 1/8" polycarbonate<br>lens <sup>(10)</sup> |
|                         | <b>55°</b> Regressed           |                                   | <b>MB</b> Black texture splay with white<br>flange <sup>(8)</sup> |  |
|                         | <b>M</b> Medium <sup>(6)</sup> |                                   |   |  |
|                         | <b>35°</b> Flush               |                                   |   |  |
|                         | <b>35°</b> Regressed           |                                   |   |  |
|                         | <b>N</b> Narrow <sup>(7)</sup> |                                   |   |  |
|                         | <b>25°</b> Flush               |                                   |   |  |
|                         | <b>25°</b> Regressed           |                                   |   |  |

## MOUNTING

| MOUNTING TYPE <sup>(11)</sup>          | MOUNTING HARDWARE <sup>(12)</sup>  |
|--|--|
| <b>N</b> Open pan for new construction | <b>F1</b> Integral 2-position fixed pan bracket, universal bar hanger included |
|  | <b>BA1</b> Adjustable butterfly pan bracket, bar hanger not included           |
|  | <b>CA1</b> Adjustable caterpillar pan bracket, universal bar hanger included   |

## NOTES

- Lumen output based on L Trim Type, W Distribution and WH Finish, 80CRI/3500K CCT. Actual performance may vary +/-5%. See page 2 for FIXTURE PERFORMANCE DATA.
- Extended lead times may apply. Consult factory for availability.
- Not IP65 rated. Specify CEC in the option code when California Energy Commission regulations are required.
- Not IP65 rated. Specify CEC in the option code when California Energy Commission regulations are required.
- Beam angle based on WH Reflector Finish.
- L30 lumen package max when specified with Medium or narrow Distribution.
- L30 lumen package max when specified with Medium or narrow Distribution.
- R Trim Type only.
- W Distribution only. Includes smooth clear polycarbonate underlay.
- W Distribution only. Includes smooth clear polycarbonate underlay.
- Mounting hardware required, ordered separately, see MOUNTING HARDWARE ordering info. See page 3 for MOUNTING TYPE DETAILS.
- Additional Mounting Hardware options available. See page 3 for MOUNTING HARDWARE DETAILS.



# HS6DR<sup>LED</sup> 6" MIL-Spec Surgical Downlight – Round

## FIXTURE PERFORMANCE DATA

|     | DISTRIBUTION | WATTAGE | FLUSH LENS TRIM TYPE |                 | REGRESSED LENS TRIM TYPE |                 | TOTAL AMP DRAW <sup>(1)</sup> |      |
|-----|--------------|---------|----------------------|-----------------|--------------------------|-----------------|-------------------------------|------|
|     |              |         | DELIVERED LUMENS     | EFFICACY (lm/W) | DELIVERED LUMENS         | EFFICACY (lm/W) | 120V                          | 277V |
| L10 | W            | 12.6    | 1034                 | 82              | 969                      | 77              | Consult<br>Factory            |      |
|     | M            | 12.6    | 1216                 | 97              | 1195                     | 95              |                               |      |
|     | N            | 12.6    | 1215                 | 96              | 1215                     | 96              |                               |      |
| L15 | W            | 18.8    | 1529                 | 81              | 1434                     | 76              |                               |      |
|     | M            | 18.8    | 1798                 | 96              | 1768                     | 94              |                               |      |
|     | N            | 18.8    | 1797                 | 96              | 1798                     | 96              |                               |      |
| L20 | W            | 23.1    | 2080                 | 90              | 1950                     | 84              |                               |      |
|     | M            | 23.1    | 2446                 | 106             | 2404                     | 104             |                               |      |
|     | N            | 23.1    | 2445                 | 106             | 2445                     | 106             |                               |      |
| L30 | W            | 37.4    | 3080                 | 82              | 2888                     | 77              |                               |      |
|     | M            | 37.4    | 3623                 | 97              | 3561                     | 95              |                               |      |
|     | N            | 37.4    | 3621                 | 97              | 3621                     | 97              |                               |      |
| L40 | W            | 46.5    | 4058                 | 87              | 3805                     | 82              |                               |      |
|     | M            | —       | —                    | —               | —                        | —               |                               |      |
|     | N            | —       | —                    | —               | —                        | —               |                               |      |
| L50 | W            | 61.0    | 5047                 | 83              | 4731                     | 78              |                               |      |
|     | M            | —       | —                    | —               | —                        | —               |                               |      |
|     | N            | —       | —                    | —               | —                        | —               |                               |      |
| L60 | W            | 76.1    | 6067                 | 80              | 5689                     | 75              |                               |      |
|     | M            | —       | —                    | —               | —                        | —               |                               |      |
|     | N            | —       | —                    | —               | —                        | —               |                               |      |

## MULTIPLIER TABLES

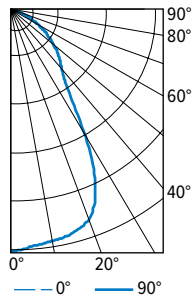
|                       | COLOR TEMPERATURE |                   | TRIM OPTIONS   |                   |
|-----------------------|-------------------|-------------------|----------------|-------------------|
|                       | CCT               | CONVERSION FACTOR | CATALOG NUMBER | CONVERSION FACTOR |
| 80 CRI                | 2700K             | 0.92              | AD             | 0.77              |
|                       | 3000K             | 0.98              | PD             | 0.77              |
|                       | 3500K             | 1.00              |                |                   |
|                       | 4000K             | 1.01              |                |                   |
| 90 CRI                | 5000K             | 1.02              |                |                   |
|                       | 2700K             | 0.76              |                |                   |
|                       | 3000K             | 0.79              |                |                   |
|                       | 3500K             | 0.82              |                |                   |
| REGRESSED TRIM FINISH | 4000K             | 0.84              | CATALOG NUMBER | CONVERSION FACTOR |
|                       | 5000K             | 0.88              | WH             | 1.00              |
|                       |                   |                   | BL             | 0.79              |

<sup>1</sup> Power factor may be lower than typical due to MIL-SPEC requirements. Consult factory for actual fixture current.

- Photometrics tested in accordance with IESNA LM-79. Results based on 80 CRI/3500K CCT, average wattage for 120V input, and 25°C ambient temperature. Actual performance may vary +/-5%.
- To calculate lumen output in emergency mode, multiply the battery wattage by the efficacy.
- Use multiplier tables to calculate additional options.

## PHOTOMETRY

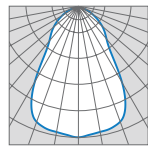
HS6DR-TL-L60/835-DIM-UNV-LW-OF-WH Total Luminaire Output: 6067 lumens; 76.1 Watts | Efficacy: 80 lm/W | 80 CRI; 3500K CCT



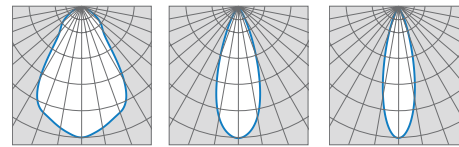
| CANDLEPOWER DISTRIBUTION | VERTICAL ANGLE | HORIZONTAL ANGLE | ZONAL LUMENS |
|--------------------------|----------------|------------------|--------------|
|                          |                | 0°               |              |
|                          | 0              | 3859             |              |
|                          | 5              | 3798             | 361          |
|                          | 15             | 3708             | 1045         |
|                          | 25             | 3197             | 1436         |
|                          | 35             | 1633             | 1065         |
|                          | 45             | 1093             | 844          |
|                          | 55             | 738              | 660          |
|                          | 65             | 413              | 412          |
|                          | 75             | 183              | 197          |
|                          | 85             | 40               | 48           |
|                          | 90             | 0                |              |

| LUMEN SUMMARY | ZONE    | LUMENS | % FIXTURE |
|---------------|---------|--------|-----------|
|               | 0 - 30  | 2842   | 47        |
|               | 0 - 40  | 3907   | 64        |
|               | 0 - 60  | 5410   | 89        |
|               | 0 - 90  | 6067   | 100       |
|               | 0 - 180 | 6067   | 100       |

## FLUSH

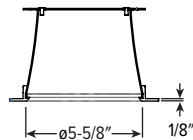


## REGRESSED

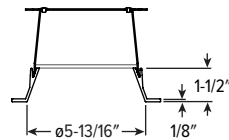


## TRIM TYPE DETAILS

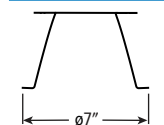
### FLUSH



### REGRESSED



## FLANGE TYPE DETAILS



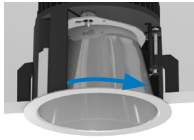
Ceiling Cutout: ø6-1/2"



# HS6DR<sup>LED</sup> 6" MIL-Spec Surgical Downlight – Round

## TRIMLOCK DETAILS

**TWIST**



**PULL**

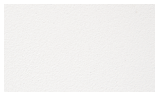


**RELEASE**



## REFLECTOR FINISH DETAILS

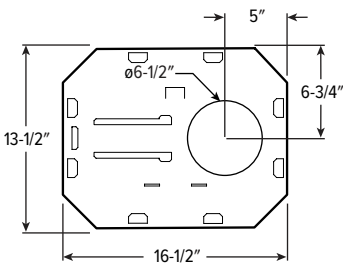
**WH**  
White



**BL**  
Black

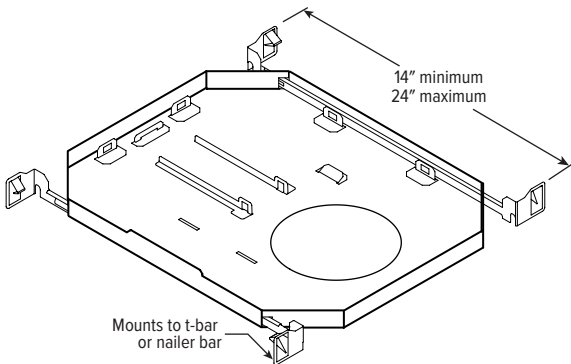


## MOUNTING TYPE DETAILS

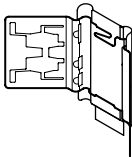


## MOUNTING HARDWARE DETAILS

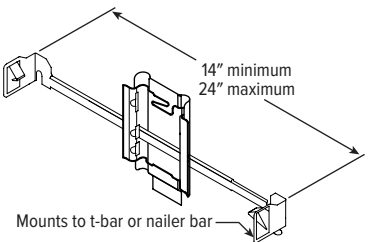
**F1** Integral 2-position fixed pan bracket, universal bar hanger included



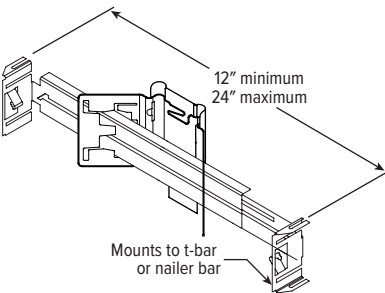
**BA1** Adjustable butterfly pan bracket, bar hanger not included



**CA1** Adjustable caterpillar pan bracket, universal bar hanger included



**BA2** Adjustable butterfly pan bracket, heavy-duty universal bar hanger included



**CA2** Adjustable caterpillar pan bracket, t-bar hanger included

