

CATALOG #: _____

TYPE: _____

PROJECT: _____



FEATURES

- Attractive and efficient architectural fixture delivers comfortable, uniform illumination
- Maximize energy savings with efficacies as high as 135 lm/W
- Fully room-side accessible without the use of tools
- Frosted acrylic diffusers combined with highly reflective matte white paint provide high optical efficiencies and visual comfort
- One-piece diffusers eliminate the need for separate overlays
- Slim fixture depth for use shallow plenum applications
- Companion HES products preserve continuity, see hew.com
- Wireless in-fixture control solutions available
- Made Right Here® in the USA

SPECIFICATIONS

- HOUSING** – 22-gauge die-formed C.R.S.
- SHIELDING** – Frosted, ribbed acrylic.
- FINISH** – Highly reflective non-glare matte white polyester powder coat bonded to phosphate-free, multi-stage pretreated metal. All parts painted after fabrication to facilitate installation, increase efficiency, and inhibit corrosion.
- ELECTRICAL** – High-quality mid-power LED boards. Rated for 50,000 hours at 70% lumen maintenance (L70).
- MOUNTING** – NEMA Type “G” 15/16” or 1” grid standard. For NEMA Type “NFG” and “SG” 9/16” grid installations, specify EQCLIPS option. Drywall flange kit available, shipped separately, see page 3 for DRYWALL KIT (DFK) OPTIONS.
- LISTINGS** –
 - cCSAus certified as luminaire suitable for dry or damp locations.
 - IC-rated for direct contact with insulation.
 - City of Chicago Environmental Air approved when specified with CP option.
 - DesignLights Consortium qualified product. Not all versions of this product may be DLC qualified, see the DLC Qualified Products List at www.designlights.org/QPL.
 - Complies with the Buy American Act and other federal regulations. Request certification at hew.com/baa.
- WARRANTY** – 5-year limited warranty, see hew.com/warranty.

ORDERING EXAMPLE: HETG - S24 - L76/835 - A - OPTIONS - CONTROL/DIM - UNV

ORDERING INFO

SERIES	CEILING TYPE ⁽¹⁾	FIXTURE STYLE	WIDTH	LENGTH	LUMENS ⁽²⁾	CRI	CCT
HET	G 15/16” or 1” grid	S Static, no air capability	1 1' ⁽³⁾	2 2'	1x4	8 80	30 3000K
				4 4'	L38 3,800lm	9 90 ⁽⁴⁾	35 3500K
			2 2'		L69 6,900lm		40 4000K
					2x2		50 5000K
					L38 3,800lm		
					L69 6,900lm		
					2x4		
					L50 5,000lm		
					L76 7,600lm		
					L130 13,000lm		

SHIELDING	OPTIONS ⁽⁵⁾	CONTROL
A Frosted, ribbed acrylic diffusers	EM/10W 10-watt emergency battery	See page 4 for ADDITIONAL CONTROL/DRIVER OPTIONS.
	EM/12W 12-watt emergency battery ⁽⁶⁾	
	EQCLIPS (L_) Earthquake clips ⁽⁷⁾	
	Additional lower lumen packages available. Example: 6,500 nominal lumens = HETG-S24-L76/840-A-(L65). ⁽⁸⁾	
	CP Chicago plenum (CCEA)	
		– None
		AVI-LVFA AvI-on wireless fixture control ⁽⁹⁾
		AWNRLutron Athena wireless node integral fixture control, RF only ⁽¹⁰⁾

DRIVER	VOLTAGE
See page 4 for ADDITIONAL CONTROL/DRIVER OPTIONS.	120 120V
DIM Driver with external dimming wires	277 277V
DRV Driver without external dimming wires	UNV 120-277V
DA Driver with 12V auxiliary power, without external dimming wires ⁽¹¹⁾	347 347V ⁽¹³⁾
DSR Sensor-ready driver without external dimming wires (D4i DALI-2) ⁽¹²⁾	

NOTES

- See page 3 for DRYWALL KIT (DFK) OPTIONS.
- Lumen output based on 80 CRI/3500K CCT. Actual performance may vary +/-5%, see page 2 for FIXTURE PERFORMANCE DATA. Additional lumen packages available, see options.
- Available in 4' length only.
- Extended lead times may apply. Consult factory for availability.
- See Technical Info for Power Entry details.
- Not available when CEC regulations are required.
- 4 per fixture. Optional for 1” grid installations. Required for 9/16” grid mounting.
- Specify in increments of 100 nominal lumens. Option must be specified with next higher lumen package.
- DA Driver only. See page 4 for AVI-ON BLUETOOTH WIRELESS CONTROL DETAILS.
- DA and DSR Drivers only.
- AvI-on and Lutron Athena Controls only.
- Lutron Athena Controls only.
- Not available with EM batteries, DA, or DSR drivers.



FIXTURE PERFORMANCE DATA

	LED PACKAGE	DELIVERED LUMENS	WATTAGE	EFFICACY (lm/W)
1x4	L38	3868	30.7	126
	L69	6984	54.4	128
2x2	L38	3825	30.7	125
	L69	6905	54.4	127
2x4	L50	5114	37.7	136
	L76	7696	59.8	129
	L130	13128	98.7	133

MULTIPLIER TABLE

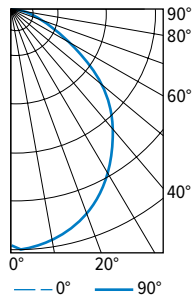
COLOR TEMPERATURE	
CCT	CONVERSION FACTOR
3000K	0.99
3500K	1.00
4000K	1.03
5000K	1.06

80 CRI	3000K	0.82
	3500K	0.83
	4000K	0.86
	5000K	0.89

- Photometrics tested in accordance with IESNA LM-79. Results based on 80 CRI/3500K CCT, average wattage for 120V through 277V input, and 25°C ambient temperature. Actual performance may vary +/-5%
- To calculate lumen output in emergency mode, multiply the battery wattage by the efficacy.
- Use multiplier table to calculate additional options.

PHOTOMETRY

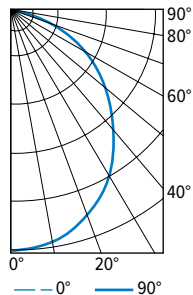
HETG-S14-L69/835 Total Luminaire Output: 6905 lumens; 54.4 Watts | Efficacy: 126.9 lm/W | 80 CRI; 3500K CCT



VERTICAL ANGLE	HORIZONTAL ANGLE			ZONAL LUMENS
	0°	45°	90°	
0	2602	2602	2602	
5	2589	2588	2589	246
15	2476	2483	2502	701
25	2250	2275	2302	1048
35	1932	1982	2032	1239
45	1561	1637	1698	1260
55	1165	1261	1291	1111
65	769	842	797	804
75	386	410	348	417
85	79	51	29	79
90	5	4	4	

LUMEN SUMMARY	ZONE	LUMENS	% FIXTURE
	0 - 30	1994	29
	0 - 40	3233	47
	0 - 60	5605	81
	0 - 90	6905	100
	0 - 180	6905	100

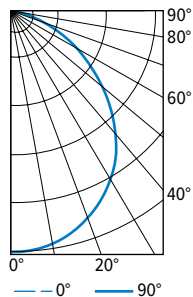
HETG-S22-L69/835 Total Luminaire Output: 6984 lumens; 54.4 Watts | Efficacy: 128.4 lm/W | 80 CRI; 3500K CCT



VERTICAL ANGLE	HORIZONTAL ANGLE			ZONAL LUMENS
	0°	45°	90°	
0	2827	2827	2827	
5	2816	2819	2813	267
15	2693	2706	2722	764
25	2424	2494	2521	1144
35	2049	2164	2237	1344
45	1580	1743	1843	1325
55	1065	1244	1368	1094
65	617	753	714	700
75	274	300	191	296
85	45	27	11	50
90	0	0	0	

LUMEN SUMMARY	ZONE	LUMENS	% FIXTURE
	0 - 30	2175	31
	0 - 40	3519	50
	0 - 60	5937	85
	0 - 90	6984	100
	0 - 180	6984	100

HETG-S24-L130/835 Total Luminaire Output: 13128 lumens; 98.7 Watts | Efficacy: 133.0 lm/W | 80 CRI; 3500K CCT



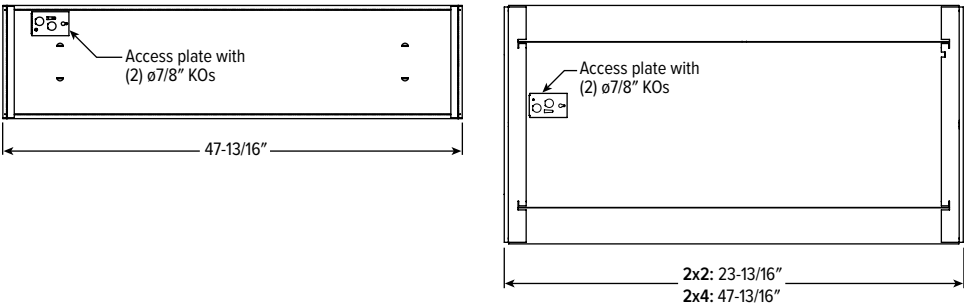
VERTICAL ANGLE	HORIZONTAL ANGLE			ZONAL LUMENS
	0°	45°	90°	
0	5229	5229	5229	
5	5201	5179	5180	493
15	4985	5002	4995	1408
25	4546	4623	4638	2118
35	3920	4000	4094	2508
45	3021	3233	3364	2474
55	2058	2389	2505	2081
65	1180	1505	1278	1369
75	514	599	385	579
85	86	53	39	97
90	0	0	0	

LUMEN SUMMARY	ZONE	LUMENS	% FIXTURE
	0 - 30	4019	31
	0 - 40	6527	50
	0 - 60	11082	84
	0 - 90	13128	100
	0 - 180	13128	100

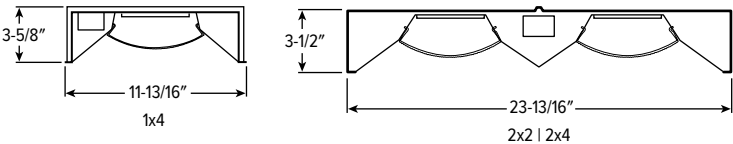


FIXTURE DETAILS

BACK VIEWS



CROSS SECTIONS



DRYWALL KIT (DFK) OPTIONS

ORDERING INFO

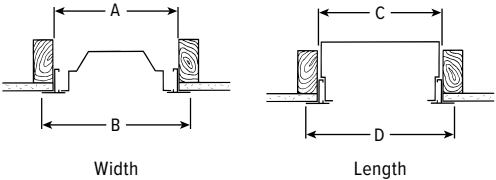
EXAMPLE: DFK - 24 48 W			
SERIES	WIDTH	LENGTH	FINISH
DFK Drywall kit	12 1'	48 4'	W White AMW Anti-microbial white
	24 2'	24 2'	
	24 2'	48 4'	

INSTALLATION DIMENSIONS

NOMINAL SIZE	ROUGH-IN		FINISH TRIM SIZE	
	WIDTH (A)	LENGTH (C)	WIDTH (B)	LENGTH (D)
1' x 4'	12-3/8"	48-3/8"	13-5/16"	49-5/16"
2' x 2'	24-3/8"	24-3/8"	25-5/16"	25-5/16"
2' x 4'	24-3/8"	48-3/8"	25-5/16"	49-5/16"

TYPICAL INSTALLATION

Refer to table for dimensions.



SEE NEXT PAGE FOR CONTROL DETAILS.



AVI-ON BLUETOOTH WIRELESS CONTROL DETAILS

FEATURES

Simple

- Gateway-free distributed control
- Factory pre-commissioning
- Contractor friendly installation
- Occupancy/vacancy/daylight sensing

Scalable

- Virtually unlimited network size
- Spans small offices to large warehouses
- Flexible control strategies

Secure

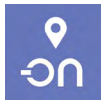
- Optional cloud connectivity
- UL IoT platinum security rating
- DLC 5.0 compliant

COMMISSIONING & INSTALLATION TOOLS

Avi-on mobile apps provide intuitive, quick installation and commissioning. Pro tools are available to qualified installers. Live commissioning training and on-site or remote support by Avi-on must be ordered separately through Avi-on.



Commissioning
Mobile App

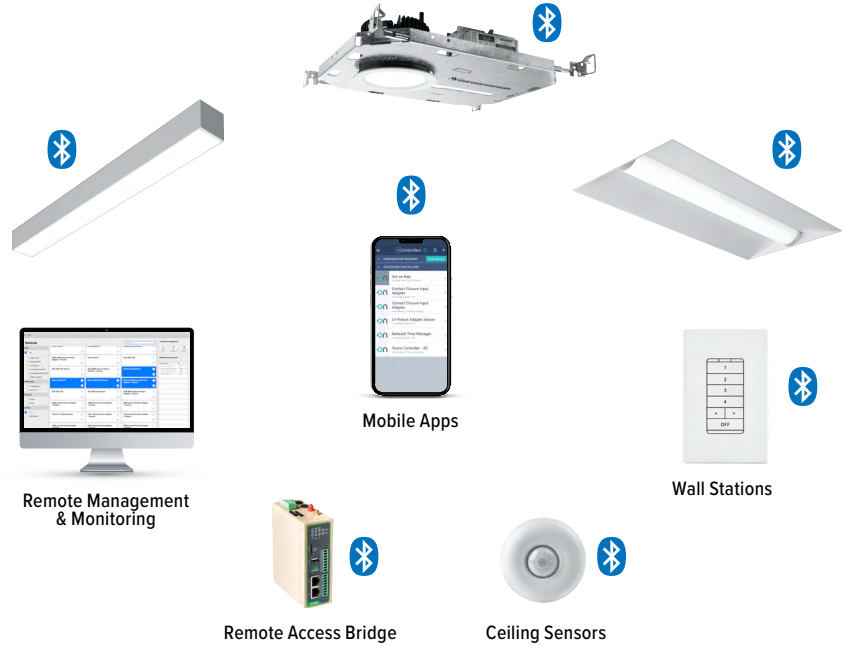


Zone Scanner
Web App



Commissioning
Pro App

SYSTEM COMPONENTS



The Bluetooth® word mark and logos are registered trademarks owned by Bluetooth SIG, Inc. and any use of such marks by Avi-on is under license. Other trademarks and trade names are those of their respective owners.

ACCESSORIES

WALL STATIONS	
AVI-2401AC	Scene controller - numbered 1-4, 120-277VAC
AVI-2402BAT	Scene controller - numbered 1-4, battery powered
AVI-2401AC-2	Dimmer with presets - percentages, 120-277VAC
AVI-2402BAT-2	Dimmer with presets - percentages, battery powered
AVI-2401AC-3	On/off/dimming, 120-277VAC
AVI-2402BAT-3	On/off/dimming, battery powered

NETWORK	
AVI-RAB-LTE	Remote access bridge
AVI-KIT-NTM	Network time manager with battery backup
CEILING MOUNT SENSORS	
AVI-KIT-SEN-DUCM	PIR motion and ultrasonic sensor kit
AVI-KIT-SEN-ICM	PIR motion and photocell sensor kit

For load controllers and additional accessory info, see hew.com/avi-on

ADDITIONAL CONTROL/DRIVER OPTIONS

Note: Lumen restrictions apply, consult product builder at hew.com/product-builder.

CATALOG NUMBER	DESCRIPTION
AVI-LVFA/DA	Avi-on wireless fixture control for use with driver with 12V auxiliary power
AWNDR/DA	Lutron Athena wireless node integral fixture control, RF only, for use with driver with 12V auxiliary power
AWNDR/DSR	Lutron Athena wireless node integral fixture control, RF only, for use with sensor-ready driver (D4i DALI-2)
DRV	Driver prewired for non-dimming applications
DIM	Dimming driver prewired for 0-10V low voltage applications
DIM1	1% dimming driver prewired for 0-10V low voltage applications
DIM LINE	Line voltage dimming driver (TRIAC and ELV compatible, 120V only)
DIM TRC	Line voltage dimming driver (TRIAC compatible, 120V only)
SD40	40% step-dimming driver
SD50	50% step-dimming driver
DALI	DALI dimming driver
LDE1	Lutron Hi-Lume 1% EcoSystem dimming LED driver

