

CATALOG #: _____

TYPE: _____

PROJECT: _____



FEATURES

- Attractive and efficient architectural fixture delivers comfortable, uniform perimeter illumination
- Frosted acrylic diffuser combined with highly reflective matte white paint provides visual comfort
- Multiple dimming protocols available
- Fully room-side accessible without the use of tools
- Quick-wire access plate in back of fixture housing for easy attachment of incoming power supply
- Wireless in-fixture control solutions available
- Made Right Here® in the USA

SPECIFICATIONS

- HOUSING** – 22-gauge die-formed C.R.S.
- DOOR FRAME** – Steel door frame with integral torsion springs to secure the frame within the fixture.
- SHIELDING** – Frosted, ribbed acrylic.
- FINISH** – Textured matte white polyester TGIC powder coat bonded to phosphate-free, multi-stage pretreated metal. All parts painted after fabrication to facilitate installation, increase efficiency, and inhibit corrosion.
- ELECTRICAL** – High-quality mid-power LED boards. Rated for 50,000 hours at 70% lumen maintenance (L70).
- MOUNTING** – NEMA Type “G” 15/16” or 1” grid standard. For NEMA Type “NFG” and “SG” 9/16” grid installations, specify EQCLIPS option. Drywall flange kits available, shipped separately, see options. Fixture must be installed prior to Drywall Kit.
- LISTINGS** –
 - cCSAus certified as luminaire suitable for dry or damp locations.
 - Complies with the Buy American Act and other federal regulations. Request certification at hew.com/baa.
- WARRANTY** – 5-year limited warranty, see hew.com/warranty.

ORDERING EXAMPLE: HETWG - 4 - L30/840 - A - OPTIONS - CONTROL/DIM - UNV

ORDERING INFO

SERIES	CEILING TYPE	LENGTH	LUMENS ^[1]	CRI	CCT	SHIELDING ^[2]
HETW	G 9/16", 15/16", or 1" grid ^[3]	2 2'	2'	8 80	30 3000K	A Curved frosted ribbed acrylic diffuser (standard) A/CHA118 Curved frosted ribbed acrylic diffuser with clear, high temperature non-prismatic lens
		3 3'	L16 1,600lm	9 90 ^[4]	35 3500K	
		4 4'	3'		40 4000K	
			L24 2,400lm		50 5000K	
			4'			
			L30 3,000lm			

OPTIONS

- EM/10W** 10-watt emergency battery
- EQCLIPS** Earthquake clips ^[5]
- (L__)** Additional lower lumen packages available. ^[6]
Example: 2,500 nominal lumens = HETWG-4-L30/840-A-(L25).

DFK-0648W Drywall kit, 6" x 48", white ^[7]

CONTROL

- None
- AVI-LVFA** Avi-on wireless fixture control ^[8]
- AWN** Lutron Athena wireless node integral fixture control, RF only ^[9]

DRIVER

See page 3 for **ADDITIONAL CONTROL/DRIVER OPTIONS**.

- DIM** Driver with external dimming wires
- DRV** Driver without external dimming wires
- DA** Driver with 12V auxiliary power, without external dimming wires ^[10]
- DSR** Sensor-ready driver without external dimming wires (D4i DALI-2) ^[11]

VOLTAGE

- 120** 120V
- 277** 277V
- UNV** 120-277V
- 347** 347V ^[12]

NOTES

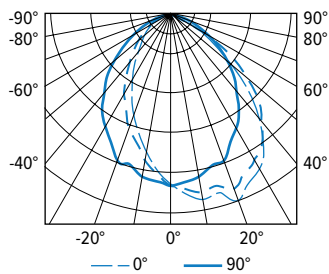
- Lumen output based on A shielding, 80 CRI/3500K CCT. Other shielding options may reduce lumen output. Actual performance may vary +/-5%.
- Other shielding options may reduce lumen output.
- Must specify EQCLIPS option when 9/16" grid mounting.
- Extended lead times may apply. Consult factory for availability.
- 2 per fixture. Optional for 1" grid installations. Required for 9/16" grid mounting.
- Specify in increments of 100 nominal lumens. Option must be specified with next higher lumen package.

- Fixture must be installed prior to Drywall Kit (DFK). See page 2 for DRYWALL KIT (DFK) OPTIONS.
- DA Driver only. See page 3 for AVI-ON BLUETOOTH WIRELESS CONTROL DETAILS.
- DA and DSR Drivers only.
- Avi-on and Lutron Athena Controls only.
- Lutron Athena Controls only.
- Not available with EM batteries, DA, or DSR drivers.



PHOTOMETRY

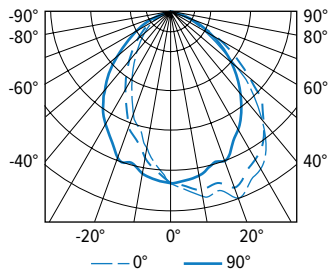
HETWG-4-L30/840-A Report #: 16990.0 ; 12/13/12 | Total Luminaire Output: 3135 lumens; 43.2 Watts | Efficacy: 72.6 lm/W | 82.9 CRI; 3948K CCT



CANDLEPOWER DISTRIBUTION	VERTICAL ANGLE	HORIZONTAL ANGLE					ZONAL LUMENS
		0°	45°	90°	135°	180°	
	0	1482	1482	1482	1482	1482	
	5	1556	1518	1447	1386	1348	139
	15	1599	1529	1347	1150	1059	380
	25	1600	1512	1232	917	790	562
	35	1409	1372	1040	686	565	641
	45	984	1094	790	468	374	583
	55	514	682	524	297	231	422
	65	240	355	319	171	139	261
	75	102	138	149	75	67	120
	85	22	31	36	18	15	26
	90	0	0	0	0	0	

LUMEN SUMMARY	ZONE	LUMENS	% FIXTURE
	0 - 30	1081	35
	0 - 40	1722	55
	0 - 60	2728	87
	0 - 90	3135	100
	0 - 180	3135	100

HETWG-4-L30/840-A/CHA118 Report #: 16991.0 ; 12/13/12 | Total Luminaire Output: 2942 lumens; 42.8 Watts | Efficacy: 68.7 lm/W | 83.0 CRI; 3953K CCT

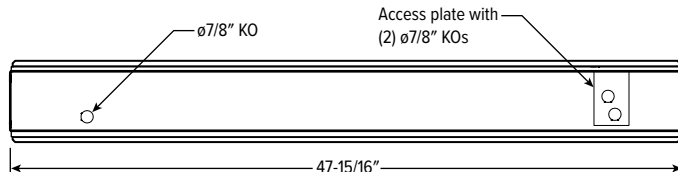


CANDLEPOWER DISTRIBUTION	VERTICAL ANGLE	HORIZONTAL ANGLE					ZONAL LUMENS
		0°	45°	90°	135°	180°	
	0	1405	1405	1405	1405	1405	
	5	1475	1440	1378	1320	1290	132
	15	1513	1449	1282	1103	1019	362
	25	1518	1433	1177	894	779	538
	35	1340	1300	995	676	565	617
	45	941	1034	758	468	385	564
	55	479	631	494	298	239	400
	65	203	304	285	161	134	231
	75	67	96	111	59	52	86
	85	11	14	15	10	10	12
	90	0	0	0	0	0	

LUMEN SUMMARY	ZONE	LUMENS	% FIXTURE
	0 - 30	1032	35
	0 - 40	1649	56
	0 - 60	2613	89
	0 - 90	2942	100
	0 - 180	2942	100

FIXTURE DETAILS

BACK VIEWS



DRYWALL KIT (DFK) OPTIONS

ORDERING INFO

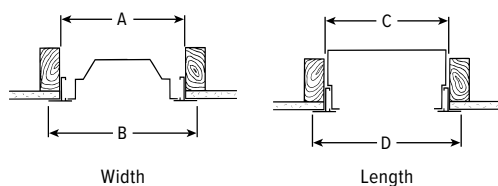
EXAMPLE: DFK - 06 48 W			
SERIES	WIDTH	LENGTH	FINISH
DFK Drywall kit	06 6"	48 4'	W White AMW Anti-microbial white

INSTALLATION DIMENSIONS

NOMINAL SIZE	ROUGH-IN		FINISH TRIM SIZE	
	WIDTH (A)	LENGTH (C)	WIDTH (B)	LENGTH (D)
6" x 4'	6-3/8"	48-3/8"	7-5/16"	49-5/16"

TYPICAL INSTALLATION

Refer to table for dimensions.



AVI-ON BLUETOOTH WIRELESS CONTROL DETAILS

FEATURES

Simple

- Gateway-free distributed control
- Factory pre-commissioning
- Contractor friendly installation
- Occupancy/vacancy/daylight sensing

Scalable

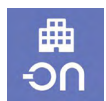
- Virtually unlimited network size
- Spans small offices to large warehouses
- Flexible control strategies

Secure

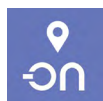
- Optional cloud connectivity
- UL IoT platinum security rating
- DLC 5.0 compliant

COMMISSIONING & INSTALLATION TOOLS

Avi-on mobile apps provide intuitive, quick installation and commissioning. Pro tools are available to qualified installers. Live commissioning training and on-site or remote support by Avi-on must be ordered separately through Avi-on.



Commissioning
Mobile App

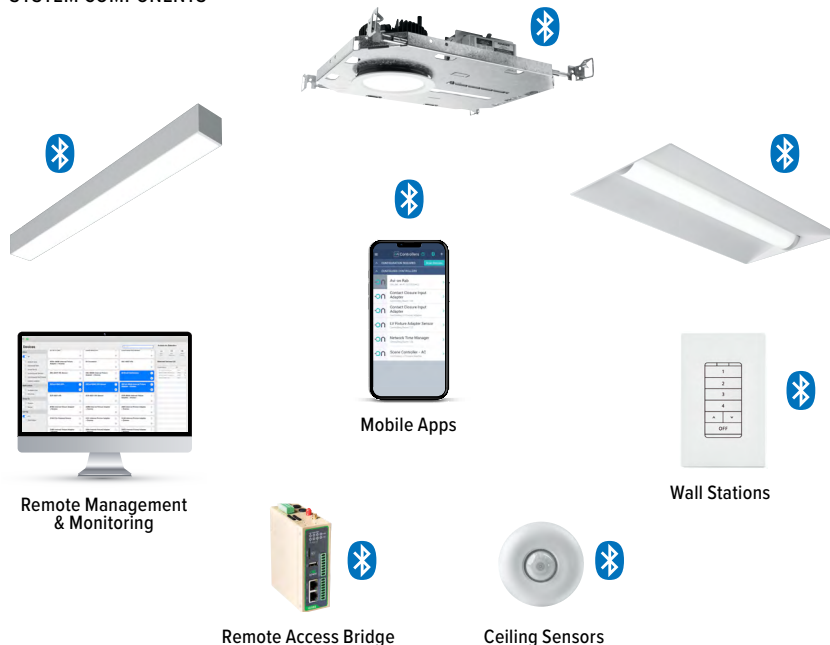


Zone Scanner
Web App



Commissioning
Pro App

SYSTEM COMPONENTS



The Bluetooth® word mark and logos are registered trademarks owned by Bluetooth SIG, Inc. and any use of such marks by Avi-on is under license. Other trademarks and trade names are those of their respective owners.

ACCESSORIES

WALL STATIONS	
AVI-2401AC	Scene controller - numbered 1-4, 120-277VAC
AVI-2402BAT	Scene controller - numbered 1-4, battery powered
AVI-2401AC-2	Dimmer with presets - percentages, 120-277VAC
AVI-2402BAT-2	Dimmer with presets - percentages, battery powered
AVI-2401AC-3	On/off/dimming, 120-277VAC
AVI-2402BAT-3	On/off/dimming, battery powered

NETWORK	
AVI-RAB-LTE	Remote access bridge
AVI-KIT-NTM	Network time manager with battery backup
CEILING MOUNT SENSORS	
AVI-KIT-SEN-DUCM	PIR motion and ultrasonic sensor kit
AVI-KIT-SEN-ICM	PIR motion and photocell sensor kit

For load controllers and additional accessory info, see hew.com/avi-on

ADDITIONAL CONTROL/DRIVER OPTIONS

Note: Lumen restrictions apply, consult product builder at hew.com/product-builder.

CATALOG NUMBER	DESCRIPTION
AVI-LVFA/DA	Avi-on wireless fixture control for use with driver with 12V auxiliary power
AWN/DA	Lutron Athena wireless node integral fixture control, RF only, for use with driver with 12V auxiliary power
AWN/DSR	Lutron Athena wireless node integral fixture control, RF only, for use with sensor-ready driver (D4i DALI-2)
DRV	Driver prewired for non-dimming applications
DIM	Dimming driver prewired for 0-10V low voltage applications
DIM1	1% dimming driver prewired for 0-10V low voltage applications
DIM LINE	Line voltage dimming driver (TRIAC and ELV compatible, 120V only)
DIM TRC	Line voltage dimming driver (TRIAC compatible, 120V only)
SD40	40% step-dimming driver
SD50	50% step-dimming driver
DALI	DALI dimming driver
LDE1	Lutron Hi-lume 1% EcoSystem dimming LED driver

