

CATALOG #: _____

TYPE: _____

PROJECT: _____

FEATURES

- Attractive and efficient surface mount architectural fixture delivers comfortable, uniform illumination
- Seamlessly integrate LED to any existing HET project
- Maximize energy savings with efficacies as high as 126 lm/W
- Fully room-side accessible without the use of tools
- Frosted acrylic diffusers combined with highly reflective matte white paint provide high optical efficiencies and visual comfort
- One-piece diffusers eliminate the need for separate overlays
- Companion HET products preserve continuity, see hew.com
- Wireless in-fixture control solutions available
- Made Right Here® in the USA



SPECIFICATIONS

- HOUSING** – 22-gauge die-formed C.R.S.
- SHIELDING** – Frosted, ribbed acrylic.
- FINISH** – Textured matte white polyester TGIC powder coat bonded to phosphate-free, multi-stage pretreated metal. All parts painted after fabrication to facilitate installation, increase efficiency, and inhibit corrosion.
- ELECTRICAL** – High quality mid-power LED boards. Rated for 50,000 hours at 70% lumen maintenance (L70).
- MOUNTING** – Surface or suspended.
- LISTINGS** –
 - cETLus conforms to UL STD 1598 and UL STD 8750. Certified to CAN/CSA STD C22.2 No. 250.0. Suitable for damp locations.
 - Complies with the Buy American Act and other federal regulations. Request certification at hew.com/baa.
- WARRANTY** – 5-year limited warranty, see hew.com/warranty.

ORDERING EXAMPLE: HES - 24 - L76/835 - A - OPTIONS - CONTROL/DIM - UNV

ORDERING INFO

SERIES	WIDTH	LENGTH	LUMENS ^[1]	CRI	CCT	SHIELDING
HES	1 1' ^[2] 2 2'	2 2'	1x4	8 80	30 3000K	A Frosted, ribbed acrylic diffusers
		4 4'	L30 3,000lm	9 90 ^[3]	35 3500K	
			L38 3,800lm		40 4000K	
			L54 5,400lm		50 5000K	
			2x2			
			L30 3,000lm			
			L38 3,800lm			
			L54 5,400lm			
			2x4			
			L40 4,000lm			
			L76 7,600lm			
			L98 9,800lm			

OPTIONS ^[4]

- EM/10W** 10-watt emergency battery
EM/12W 12-watt emergency battery ^[5]
(L__) Additional lower lumen packages available. Specify in increments of 100 nominal lumens. Option must be specified with next higher lumen package.
Example: 6,500 nominal lumens = HES-24-L76/840-(L65).

CONTROL

- See page 4 for **ADDITIONAL CONTROL/ DRIVER OPTIONS**.
- None
 - AVI-LVFA** Avi-on wireless fixture control ^[6]
 - AWNRR** Lutron Athena wireless node integral fixture control, RF only ^[7]

DRIVER

See page 4 for **ADDITIONAL CONTROL/ DRIVER OPTIONS**.

VOLTAGE

- 120** 120V
- 277** 277V
- UNV** 120-277V
- 347** 347V ^[10]
- DIM** Driver with external dimming wires
- DRV** Driver without external dimming wires
- DA** Driver with 12V auxiliary power, without external dimming wires ^[8]
- DSR** Sensor-ready driver without external dimming wires (D4i DALI-2) ^[9]

NOTES

- Lumen output based on 80 CRI/3500K CCT. Actual performance may vary +/-5%, see page 2 for **FIXTURE PERFORMANCE DATA**.
- Available in 4' length only.
- Extended lead times may apply. Consult factory for availability.
- See page 2 for **FINISH OPTIONS**. Custom colors available upon request. Suspended mounting available. See page 3 for **SUSPENDED MOUNTING DETAILS**. See Technical Info for **Power Entry** details.

- Not available when CEC regulations are required.
- DA Driver only. See page 4 for **AVI-ON BLUETOOTH WIRELESS CONTROL DETAILS**.
- DA and DSR Drivers only.
- Avi-on and Lutron Athena Controls only.
- Lutron Athena Controls only.
- Not available with EM batteries, DA, or DSR drivers.



FIXTURE PERFORMANCE DATA

	LED PACKAGE	DELIVERED LUMENS	WATTAGE	EFFICACY (lm/W)
1x4	L30	3112	26.7	117
	L38	3929	30.9	127
	L54	5441	44.8	121
2x2	L30	3090	26.6	116
	L38	3901	30.9	126
	L54	5404	44.8	121
2x4	L40	4067	32.4	126
	L76	7629	60.1	127
	L98	9814	79.4	124

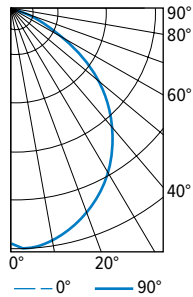
MULTIPLIER TABLE

	COLOR TEMPERATURE	
	CCT	CONVERSION FACTOR
80 CRI	3000K	0.99
	3500K	1.00
	4000K	1.03
	5000K	1.06
90 CRI	3000K	0.82
	3500K	0.83
	4000K	0.86
	5000K	0.89

- Photometrics tested in accordance with IESNA LM-79. Results shown are based on 25°C ambient temperature.
- Wattage shown is average for 120V through 277V input.
- Results based on 3500K, 80 CRI, actual performance may vary +/-5%
- To calculate lumen output in emergency mode, multiply the battery wattage by the efficacy.
- Use multiplier table to calculate additional options.

PHOTOMETRY

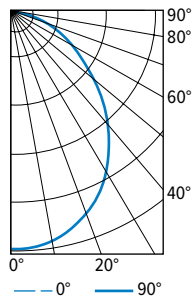
HES-14-L54/835-A Total Luminaire Output: 5441 lumens; 44.8 Watts | Efficacy: 121.5 lm/W | 80 CRI; 3500K CCT



CANDLEPOWER DISTRIBUTION	VERTICAL ANGLE	HORIZONTAL ANGLE			ZONAL LUMENS
		0°	45°	90°	
	0	2279	2279	2279	
	5	2235	2271	2321	216
	15	2158	2182	2206	614
	25	1989	1989	1998	912
	35	1707	1715	1698	1060
	45	1333	1348	1325	1022
	55	916	964	883	822
	65	534	591	404	515
	75	251	249	130	233
	85	59	29	14	47
	90	4	0	0	

LUMEN SUMMARY	ZONE	LUMENS	% FIXTURE
	0 - 30	1742	32
	0 - 40	2801	52
	0 - 60	4646	85
	0 - 90	5441	100
	0 - 180	5441	100

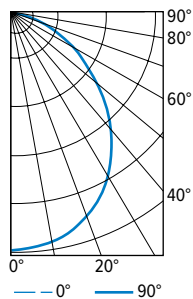
HES-22-L54/835-A Total Luminaire Output: 5404 lumens; 44.8 Watts | Efficacy: 120.6 lm/W | 80 CRI; 3500K CCT



CANDLEPOWER DISTRIBUTION	VERTICAL ANGLE	HORIZONTAL ANGLE			ZONAL LUMENS
		0°	45°	90°	
	0	2320	2320	2320	
	5	2316	2313	2296	219
	15	2206	2212	2202	622
	25	1974	1990	1992	914
	35	1651	1679	1702	1048
	45	1255	1301	1345	1003
	55	840	920	937	808
	65	485	566	464	514
	75	225	239	160	233
	85	47	26	13	42
	90	0	0	0	

LUMEN SUMMARY	ZONE	LUMENS	% FIXTURE
	0 - 30	1756	33
	0 - 40	2803	52
	0 - 60	4614	85
	0 - 90	5404	100
	0 - 180	5404	100

HES-24-L98/835-A Total Luminaire Output: 9814 lumens; 79.4 Watts | Efficacy: 123.6 lm/W | 80 CRI; 3500K CCT



CANDLEPOWER DISTRIBUTION	VERTICAL ANGLE	HORIZONTAL ANGLE			ZONAL LUMENS
		0°	45°	90°	
	0	4100	4100	4100	
	5	4086	4078	4061	387
	15	3916	3905	3884	1101
	25	3556	3547	3521	1631
	35	3004	3026	3020	1886
	45	2316	2381	2398	1828
	55	1597	1708	1675	1495
	65	956	1055	846	968
	75	452	439	298	442
	85	96	37	18	75
	90	0	0	0	

LUMEN SUMMARY	ZONE	LUMENS	% FIXTURE
	0 - 30	3119	32
	0 - 40	5005	51
	0 - 60	8328	85
	0 - 90	9814	100
	0 - 180	9814	100

FINISH OPTIONS

WHITE

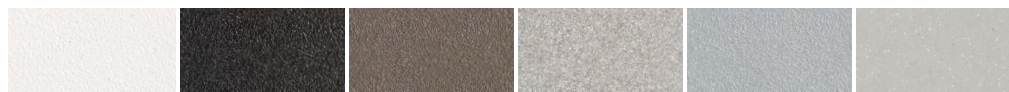
BLACK

BRONZE

NICKEL

SILVER

ALUM



For custom color, please specify RAL code or a manufacturer code with description. All custom colors other than RAL require two sample swatches, minimum 1" square.



H.E. Williams, Inc.

Carthage, Missouri

www.hew.com

417-358-4065

Designed and Manufactured in the USA

REV.10/09/23.LA

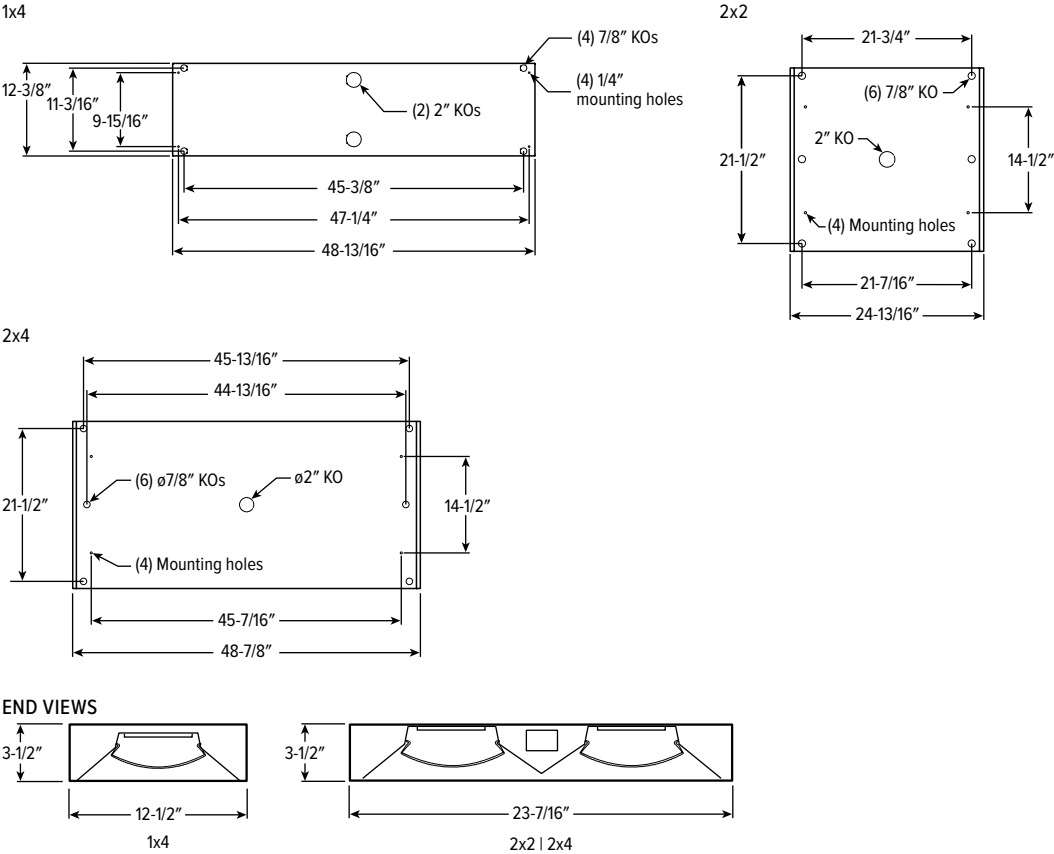
Surface Mount

Page 2 of 4

Information contained herein is subject to change without notice.

FIXTURE DETAILS

BACK VIEWS



SUSPENDED MOUNTING DETAILS

AIRCRAFT CABLE

ORDERING EXAMPLE: ACF*4P/D48			
PREFIX	TYPE	LENGTH	
ACF*4P	Four point mount adjustable aircraft cable	D 1" grid & hardpan	24 24"
		N 9/16" grid	48 48"
		S Slot grid	96 96"
			144 144"
			192 192"
			240 240"
			300 300"

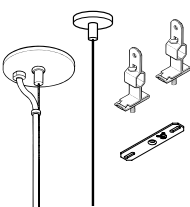
CORD OPTIONS

Units specified with aircraft cable require cord. Please specify cord type using ordering information below. Long fixture rows may require multiple feed points based on 18ga conductor size.

EXAMPLE: S2438D/W				
CORD TYPE	LENGTH	# OF COND. ^[1]	WIRE SIZE	COLOR
S	24 24"	3	8D 18ga	/W White /B Black
	48 48"	4		
	96 96"	5		
		6		

¹ Includes (2) 22ga purple & pink dimming conductors

STANDARD HARDWARE (Grid & Hardpan)



- Fixtures are provided with adjustable length aircraft cables and mounting hardware, must specify.
- One 5" canopy used at power feed location to cover the junction box. Three other suspension points use 2" canopy at the non-feed point. No J-box is required at non-feed points.



AVI-ON BLUETOOTH WIRELESS CONTROL DETAILS

FEATURES

Simple

- Gateway-free distributed control
- Factory pre-commissioning
- Contractor friendly installation
- Occupancy/vacancy/daylight sensing

Scalable

- Virtually unlimited network size
- Spans small offices to large warehouses
- Flexible control strategies

Secure

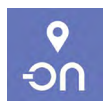
- Optional cloud connectivity
- UL IoT platinum security rating
- DLC 5.0 compliant

COMMISSIONING & INSTALLATION TOOLS

Avi-on mobile apps provide intuitive, quick installation and commissioning. Pro tools are available to qualified installers. Live commissioning training and on-site or remote support by Avi-on must be ordered separately through Avi-on.



Commissioning
Mobile App

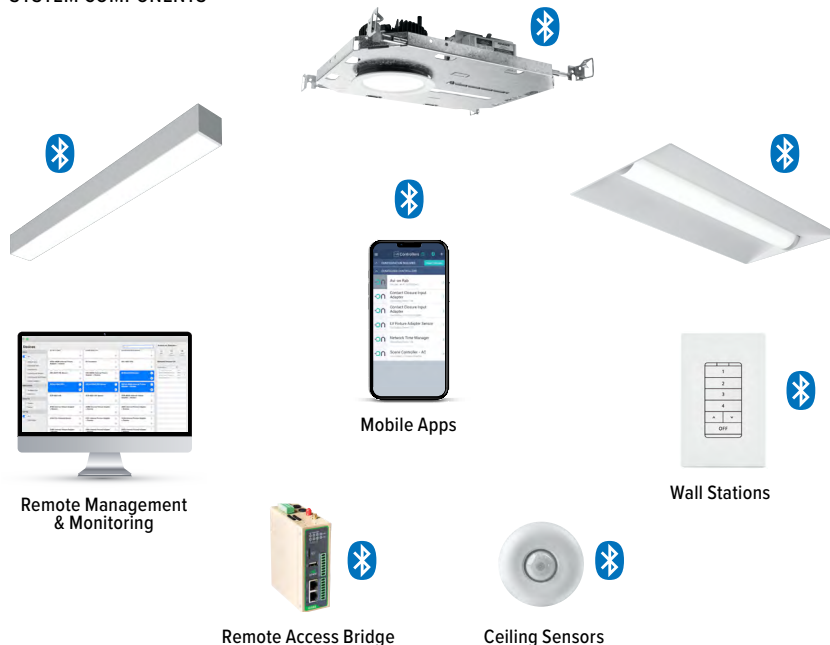


Zone Scanner
Web App



Commissioning
Pro App

SYSTEM COMPONENTS



The Bluetooth® word mark and logos are registered trademarks owned by Bluetooth SIG, Inc. and any use of such marks by Avi-on is under license. Other trademarks and trade names are those of their respective owners.

ACCESSORIES

WALL STATIONS	
AVI-2401AC	Scene controller - numbered 1-4, 120-277VAC
AVI-2402BAT	Scene controller - numbered 1-4, battery powered
AVI-2401AC-2	Dimmer with presets - percentages, 120-277VAC
AVI-2402BAT-2	Dimmer with presets - percentages, battery powered
AVI-2401AC-3	On/off/dimming, 120-277VAC
AVI-2402BAT-3	On/off/dimming, battery powered

NETWORK	
AVI-RAB-LTE	Remote access bridge – LTE connection
AVI-2001RAB-01-C	Remote access bridge – Wifi connection
AVI-KIT-NTM	Network time manager with battery backup
CEILING MOUNT SENSORS	
AVI-KIT-SEN-DUCM	PIR motion and ultrasonic sensor kit
AVI-KIT-SEN-ICM	PIR motion and photocell sensor kit

For load controllers and additional accessory info, see hew.com/avi-on

ADDITIONAL CONTROL/DRIVER OPTIONS

Note: Lumen restrictions apply, consult product builder at hew.com/product-builder.

CATALOG NUMBER	DESCRIPTION
AVI-LVFA/DA	Avi-on wireless fixture control for use with driver with 12V auxiliary power
AWNDR/DA	Lutron Athena wireless node integral fixture control, RF only, for use with driver with 12V auxiliary power
AWNDR/DSR	Lutron Athena wireless node integral fixture control, RF only, for use with sensor-ready driver (D4i DALI-2)
DRV	Driver prewired for non-dimming applications
DIM	Dimming driver prewired for 0-10V low voltage applications
DIM1	1% dimming driver prewired for 0-10V low voltage applications
DIM LINE	Line voltage dimming driver (TRIAC and ELV compatible, 120V only)
DIM TRC	Line voltage dimming driver (TRIAC compatible, 120V only)
SD40	40% step-dimming driver
SD50	50% step-dimming driver
DALI	DALI dimming driver
LDE1	Lutron Hi-lume 1% EcoSystem dimming LED driver

