

CATALOG #: _____

TYPE: _____

PROJECT: _____



FEATURES

- Provides soft, uniform illumination
- Choice of three diffusers to enhance the space
- Power and light levels can be custom set to meet energy and design needs
- Multiple dimming protocols available
- Rated for direct contact with insulation
- Shallow housing depth
- Maximize energy savings with efficacies as high as 138 lm/w
- Wireless in-fixture control solutions available
- Made Right Here® in the USA

SPECIFICATIONS

- HOUSING** – 20-gauge die-formed C.R.S.
- REFLECTOR** – Precision die-formed C.R.S. with highly reflective non-glare matte white polyester powder coated finish.
- SHIELDING** – Ribbed acrylic standard.
- FINISH** – Highly reflective non-glare matte white polyester powder coat bonded to phosphate-free, multi-stage pretreated metal. All parts painted after fabrication to facilitate installation, increase efficiency, and inhibit corrosion.
- ELECTRICAL** – High-quality mid-power LED boards. Rated for 50,000 hours at 70% lumen maintenance (L70).
- MOUNTING** – NEMA Type “G” 15/16” or 1” grid standard. For NEMA Type “NFG” 9/16” grid installation, specify EQCLIPS option. NEMA Type “SS” 9/16” grid installation available (earthquake clips included). Drywall kit accessories available for flange applications, shipped separately, see options.
- LISTINGS** –
 - cCSAus certified as luminaire suitable for dry or damp locations.
 - IC-rated for direct contact with insulation.
 - City of Chicago Environmental Air approved when specified with CP option.
 - Complies with the Buy American Act and other federal regulations. Request certification at hew.com/baa.
- WARRANTY** – 5-year limited warranty, see hew.com/warranty.

ORDERING EXAMPLE: DI G - S 2 4 - L98/835 - AD - OPTIONS - CONTROL/DIM - UNV

ORDERING INFO

SERIES	CEILING TYPE ^[1]	FIXTURE STYLE	WIDTH	LENGTH	LUMENS ^[2]	
DI	G 15/16” or 1” grid SG 9/16” Screw slot grid ^[3]	S Static, no air capability	1 1’ ^[4] 2 2’	2 2’ 4 4’	1x4 L28 2,800lm L47 4,700lm L60 6,000lm 2x2 L24 2,400lm L32 3,200lm L48 4,800lm	2x4 L50 5,000lm L64 6,400lm L88 8,800lm L98 9,800lm

CRI	CCT	SHIELDING ^[5]
8 80	27 2700K	AD Ribbed acrylic
9 90 ^[6]	30 3000K	WPR White perforated round
	35 3500K	WPR/ACRY/CTR/CLR White perforated round with center clear acrylic ^[7]
	40 4000K	
	50 5000K	

OPTIONS ^[8]

EM/10W	10-watt emergency battery
EQCLIPS	Earthquake clips ^[9]
(L___)	Additional lower lumen packages available. ^[10] Example: 7,000 nominal lumens = DIG-S24-L88/850-(L70).
CP	Chicago Plenum (CCEA)
DFK-1248W	Drywall kit, 12” x 24”, white ^[11]
DFK-2424W	Drywall kit, 24” x 24”, white ^[12]
DFK-2448W	Drywall kit, 24” x 48”, white ^[13]

CONTROL

See page 4 for ADDITIONAL CONTROL/DRIVER OPTIONS.	
–	None
AVI-LVFA	Avi-on wireless fixture control ^[14]
AWNRR	Lutron Athena wireless node integral fixture control, RF only ^[15]

DRIVER

See page 4 for ADDITIONAL CONTROL/DRIVER OPTIONS.

DIM	Driver with external dimming wires
DRV	Driver without external dimming wires
DA	Driver with 12V auxiliary power, without external dimming wires ^[16]
DSR	Sensor-ready driver without external dimming wires (D4i DALI-2) ^[17]

VOLTAGE

120	120V
277	277V
UNV	120-277V
347	347V ^[18]

NOTES

- See page 3 for DRYWALL KIT (DFK) OPTIONS.
- Lumen output based on AD shielding, 80CRI/3500K CCT. Actual performance may vary +/-5%, see page 2 for FIXTURE PERFORMANCE DATA. Additional lumen packages available, see options.
- Earthquake clips included.
- Available with 4’ length only.
- See page 3 for SHIELDING DETAILS.
- Extended lead times may apply. Consult factory for availability.
- 2x2 and 2x4 only. Consult factory for additional colors.
- See page 2 for FIXTURE PERFORMANCE DATA. See page 3 for FLEXIBLE WHIP OPTIONS.
- 4 per fixture. Optional for 1” grid installations. Required for 9/16” grid mounting.

- Specify in increments of 100 nominal lumens. Option must be specified with next higher lumen package.
- See page 3 for DRYWALL KIT (DFK) OPTIONS.
- See page 3 for DRYWALL KIT (DFK) OPTIONS.
- See page 3 for DRYWALL KIT (DFK) OPTIONS.
- DA Driver only. See page 4 for AVI-ON BLUETOOTH WIRELESS CONTROL DETAILS.
- DA and DSR Drivers only.
- Avi-on and Lutron Athena Controls only.
- Lutron Athena Controls only.
- Not available with EM batteries, DA, or DSR drivers.



FIXTURE PERFORMANCE DATA

	LED PACKAGE	DELIVERED LUMENS	WATTAGE	EFFICACY (lm/W)
1x4	L28	2810	21.4	131
	L47	4844	35.2	138
	L60	6009	46.3	130
2x2	L24	2472	19.6	126
	L32	3286	25.8	127
	L48	4862	38.1	128
2x4	L50	5060	37.4	135
	L64	6161	47.4	130
	L88	8857	66.3	134
	L98	9869	74.8	132

MULTIPLIER TABLES

COLOR TEMPERATURE	
CCT	CONVERSION FACTOR
2700K	0.97
3000K	0.99
3500K	1.00
4000K	1.03
5000K	1.06

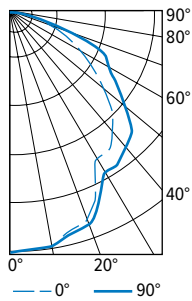
80 CRI	
2700K	0.80
3000K	0.82
3500K	0.83
4000K	0.86
5000K	0.89

SHIELDING		
LENS	1x4	2x2 2x4
AD	1.00	1.00
WPR	0.78	0.78
WPR/ACRY	—	0.76

- Photometrics tested in accordance with IESNA LM-79. Results based on AD shielding, 80 CRI/3500K CCT, average wattage for 120V through 277V input, and 25°C ambient temperature. Actual performance may vary +/-5%.
- To calculate lumen output in emergency mode, multiply the battery wattage by the efficacy.
- Use multiplier tables to calculate additional options.

PHOTOMETRY

DIG-S24-L98/835-AD Total Luminaire Output: 9869 lumens; 74.8 Watts | Efficacy: 132 lm/W | 80 CRI; 3500K CCT



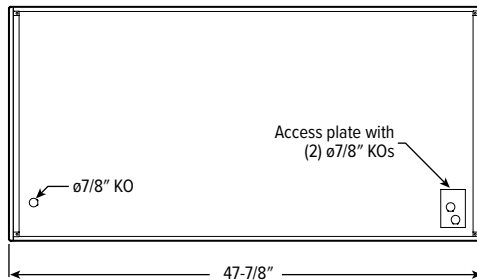
VERTICAL ANGLE	HORIZONTAL ANGLE			ZONAL LUMENS
	0°	45°	90°	
0	3587	3587	3587	
5	3545	3544	3546	338
15	3373	3397	3417	966
25	2975	3043	3097	1406
35	2531	2670	2771	1659
45	2156	2386	2530	1789
55	1519	1778	1939	1574
65	1009	1309	1567	1257
75	506	687	618	689
85	143	158	173	189
90	0	0	0	

LUMEN SUMMARY	ZONE	LUMENS	% FIXTURE
	0 - 30	2710	28
	0 - 40	4369	44
	0 - 60	7733	78
	0 - 90	9869	100
	0 - 180	9869	100

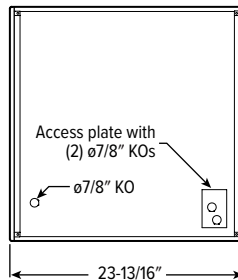
FIXTURE DETAILS

BACKVIEW

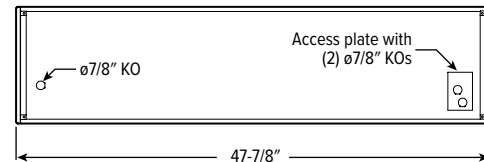
2x4



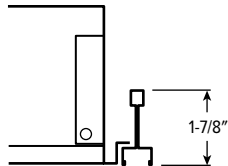
2x2



1x4

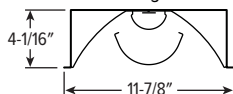


SG CEILING TYPE

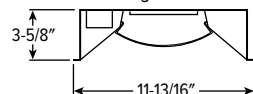


CROSS SECTIONS

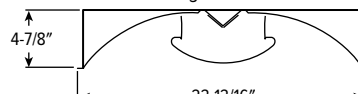
1x4 WPR Shielding



1x4 AD Shielding



2x2 | 2x4 AD Shielding



SHIELDING DETAILS



DRYWALL KIT (DFK) OPTIONS

ORDERING INFO

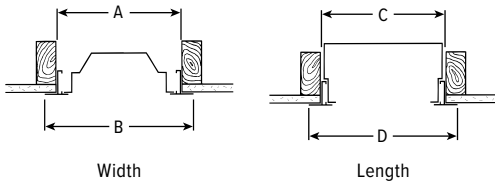
EXAMPLE: DFK - 24 48 W			
SERIES	WIDTH	LENGTH	FINISH
DFK Drywall kit	12 1'	48 4'	W White AMW Anti-microbial white
	24 2'	24 2'	
	24 2'	48 4'	

INSTALLATION DIMENSIONS

NOMINAL SIZE	ROUGH-IN		FINISH TRIM SIZE	
	WIDTH (A)	LENGTH (C)	WIDTH (B)	LENGTH (D)
1' x 4'	12-3/8"	48-3/8"	13-5/16"	49-5/16"
2' x 2'	24-3/8"	24-3/8"	25-5/16"	25-5/16"
2' x 4'	24-3/8"	48-3/8"	25-5/16"	49-5/16"

TYPICAL INSTALLATION

Refer to table for dimensions.



FLEXIBLE WHIP OPTIONS

All Williams recessed troffers are available with a flexible metallic wiring harness, factory-attached and hard-wired to the luminaire. See ordering information table.

Straight connectors are a snap-in type. Consult factory for wiring harness utilizing connectors secured by lock nuts, optional flex size, lengths, and other wire sizes or circuitry. Three-wire flex utilizes black, white, and green wire. Four-wire flex utilizes black, white, red, and green wire. Adding an emergency option requires an additional wire.

Williams fixtures are UL listed to provide factory-installation of several manufacturers' modular wiring devices. Consult factory for availability and ordering information.

DESIGNATION	DESCRIPTION	DRIVER
F338	6' of 3/8" flex, (3) No. 18 AWG wires with (2) straight connectors	DRV, LTE LINE
F348	6' of 3/8" flex, (4) No. 18 AWG wires with (2) straight connectors	SD40
F334	6' of 3/8" flex, (3) No. 14 AWG wires with (2) straight connectors	DRV, LTE LINE
F344	6' of 3/8" flex, (4) No. 14 AWG wires with (2) straight connectors	SD40
F358	6' of 3/8" flex, (5) #18 AWG wires with (2) straight connectors	DIM, DALI

SEE NEXT PAGE FOR CONTROL DETAILS.



AVI-ON BLUETOOTH WIRELESS CONTROL DETAILS

FEATURES

Simple

- Gateway-free distributed control
- Factory pre-commissioning
- Contractor friendly installation
- Occupancy/vacancy/daylight sensing

Scalable

- Virtually unlimited network size
- Spans small offices to large warehouses
- Flexible control strategies

Secure

- Optional cloud connectivity
- UL IoT platinum security rating
- DLC 5.0 compliant

COMMISSIONING & INSTALLATION TOOLS

Avi-on mobile apps provide intuitive, quick installation and commissioning. Pro tools are available to qualified installers. Live commissioning training and on-site or remote support by Avi-on must be ordered separately through Avi-on.



Commissioning Mobile App

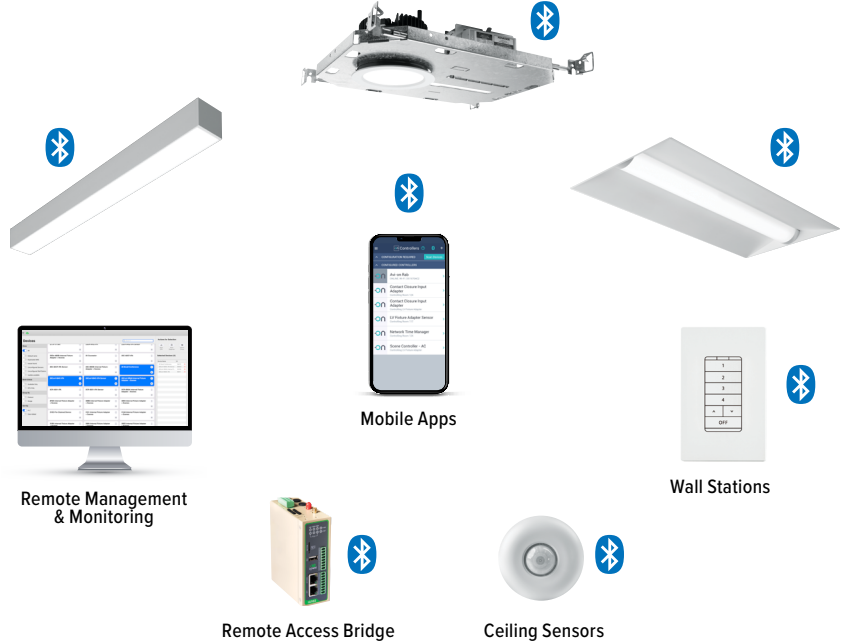


Zone Scanner Web App



Commissioning Pro App

SYSTEM COMPONENTS



The Bluetooth® word mark and logos are registered trademarks owned by Bluetooth SIG, Inc. and any use of such marks by Avi-on is under license. Other trademarks and trade names are those of their respective owners.

ACCESSORIES

WALL STATIONS	
AVI-2401AC	Scene controller - numbered 1-4, 120-277VAC
AVI-2402BAT	Scene controller - numbered 1-4, battery powered
AVI-2401AC-2	Dimmer with presets - percentages, 120-277VAC
AVI-2402BAT-2	Dimmer with presets - percentages, battery powered
AVI-2401AC-3	On/off/dimming, 120-277VAC
AVI-2402BAT-3	On/off/dimming, battery powered

NETWORK	
AVI-RAB-LTE	Remote access bridge
AVI-KIT-NTM	Network time manager with battery backup
CEILING MOUNT SENSORS	
AVI-KIT-SEN-DUCM	PIR motion and ultrasonic sensor kit
AVI-KIT-SEN-ICM	PIR motion and photocell sensor kit

For load controllers and additional accessory info, see hew.com/avi-on

ADDITIONAL CONTROL/DRIVER OPTIONS

Note: Lumen restrictions apply, consult product builder at hew.com/product-builder.

CATALOG NUMBER	DESCRIPTION
AVI-LVFA/DA	Avi-on wireless fixture control for use with driver with 12V auxiliary power
AWNDR/DA	Lutron Athena wireless node integral fixture control, RF only, for use with driver with 12V auxiliary power
AWNDR/DSR	Lutron Athena wireless node integral fixture control, RF only, for use with sensor-ready driver (D4i DALI-2)
DRV	Driver prewired for non-dimming applications
DIM	Dimming driver prewired for 0-10V low voltage applications
DIM1	1% dimming driver prewired for 0-10V low voltage applications
DIM LINE	Line voltage dimming driver (TRIAC and ELV compatible, 120V only)
DIM TRC	Line voltage dimming driver (TRIAC compatible, 120V only)
SD40	40% step-dimming driver
SD50	50% step-dimming driver
DALI	DALI dimming driver
LDE1	Lutron Hi-lume 1% EcoSystem dimming LED driver

