

CATALOG #: _____

Type: _____

PROJECT: _____

FEATURES

- Ribbed acrylic diffuser (standard) shields LEDs from direct view.
- Power and light levels can be custom set to meet energy and design needs.
- Surface mount fixture provides low-profile appearance
- Choice of three diffusers to enhance the space
- Maximize energy savings with efficacies up to 120 lm/W
- Wireless in-fixture control solutions available
- Made Right Here® in the USA



ORDERING EXAMPLE: DIS - 2 4 - L98/835 - AD - OPTIONS - CONTROL/DIM - UNV

ORDERING INFO

SERIES	WIDTH	LENGTH	LUMENS ^[1]	CRI	CCT	SHIELDING ^[2]
DIS	2 2'	2 2' 4 4'	2x2 L24 2,400lm L32 3,200lm L48 4,800lm 2x4 L50 5,000lm L64 6,400lm L88 8,800lm L98 9,800lm	8 80 9 90 ^[3]	27 2700K 30 3000K 35 3500K 40 4000K 50 5000K	AD Ribbed acrylic WPR White perforated round WPR/ACRY/CTR/CLR White perforated round with center clear acrylic ^[4]

SPECIFICATIONS

- HOUSING – 20-gauge die-formed C.R.S.
- REFLECTOR – Precision-formed C.R.S. with highly reflective non-glare matte white polyester powder coat.
- SHIELDING – Ribbed acrylic standard.
- FINISH – Textured matte white polyester TGIC powder coat bonded to phosphate-free, multi-stage pretreated metal. All parts painted after fabrication to facilitate installation, increase efficiency, and inhibit corrosion.
- ELECTRICAL – High-quality mid-power LED boards. Rated for 50,000 hours at 70% lumen maintenance (L70).
- MOUNTING – Surface or suspended with stem and canopy.
- LISTINGS –
 - cETLus conforms to UL STD 1598 and UL STD 8750. Certified to CAN/CSA STD C22.2 No. 250.0. Suitable for damp locations.
 - Complies with the Buy American Act and other federal regulations. Request certification at hew.com/baa.
- WARRANTY – 5-year limited warranty, see hew.com/warranty.

OPTIONS ^[5]

EM/10W (L__) 10-watt emergency battery
Additional lower lumen packages available
Example: 7,000 lumens =
DIS-24-L88/850-(L70) ^[6]

CONTROL

See page 4 for **ADDITIONAL CONTROL/ DRIVER OPTIONS**.

- None
- AVI-LVFA Avi-on wireless fixture control ^[7]
- AWNRLutron Athena wireless node integral fixture control, RF only ^[8]

DRIVER

See page 4 for **ADDITIONAL CONTROL/ DRIVER OPTIONS**.

DIM Driver with external dimming wires
DRV Driver without external dimming wires
DA Driver with 12V auxiliary power, without external dimming wires ^[9]
DSR Sensor-ready driver without external dimming wires (D4i DALI-2) ^[10]

VOLTAGE

120 120V
277 277V
UNV 120-277V
347 347V ^[11]

NOTES

- Lumen output based on 80 CRI/3500K and AD shielding. Actual performance may vary +/-5%, see page 2 for FIXTURE PERFORMANCE DATA. Additional lumen packages available, see Options.
- See page 2 for SHIELDING DETAILS.
- Extended lead times may apply. Consult factory for availability.
- Consult factory for additional colors.
- See page 3 for FINISH OPTIONS. Custom colors available upon request. Suspended mounting available. See page 3 for SUSPENDED MOUNTING DETAILS.

- Specify in increments of 100 nominal lumens. Option must be specified with next higher lumen package.
- DA Driver only. See page 4 for AVI-ON BLUETOOTH WIRELESS CONTROL DETAILS.
- DA and DSR Drivers only.
- Avi-on and Lutron Athena Controls only.
- Lutron Vive and Athena Controls only.
- Not available with EM batteries, DA, or DSR drivers.



FIXTURE PERFORMANCE DATA

	LED PACKAGE	DELIVERED LUMENS	WATTAGE	EFFICACY (lm/W)
2x2	L24	2454	22	112
	L32	3258	30	109
	L48	4812	40	120
2x4	L50	5047	51	99
	L64	6433	56	115
	L88	8848	73	121
	L98	9796	86	114

MULTIPLIER TABLE

	COLOR TEMPERATURE	
	CCT	CONVERSION FACTOR
80 CRI	2700K	0.97
	3000K	0.99
	3500K	1.00
	4000K	1.03
	5000K	1.06
90 CRI	2700K	0.80
	3000K	0.82
	3500K	0.83
	4000K	0.86
	5000K	0.89

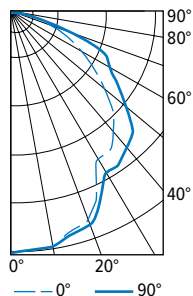
SHIELDING MULTIPLIERS	
LENS	CONVERSION FACTOR
AD	1.00
WPR	0.78
WPR/ACRY	0.76

Note: Shielding multipliers also apply to (L__ option).

- Photometrics tested in accordance with IESNA LM-79. Results shown are based on 25°C ambient temperature.
- Wattage shown is average for 120V through 277V input.
- Results based on 3500K 80 CRI and AD Shielding, actual performance may vary +/-5%
- To calculate lumen output in emergency mode, multiply the battery wattage by the efficacy.
- Use multiplier table to calculate additional options.

PHOTOMETRY

DIS-S24-L98/835-AD Report #: 19231.0; 02/26/16 | Total Luminaire Output: 9796 lumens; 85.7 Watts | Efficacy: 114.4 lm/W | 80 CRI; 3500K CCT



VERTICAL ANGLE	HORIZONTAL ANGLE			ZONAL LUMENS
	0°	45°	90°	
0	3546	3546	3546	
5	3504	3503	3505	334
15	3334	3358	3378	952
25	2941	3008	3062	1391
35	2502	2639	2739	1653
45	2131	2359	2501	1811
55	1502	1758	1917	1557
65	997	1294	1549	1277
75	500	679	611	649
85	141	156	171	173
90	0	0	0	

LUMEN SUMMARY	ZONE	LUMENS	% FIXTURE
	0 - 30	2676	27
	0 - 40	4329	44
	0 - 60	7697	79
	0 - 90	9796	100
	0 - 180	9796	100

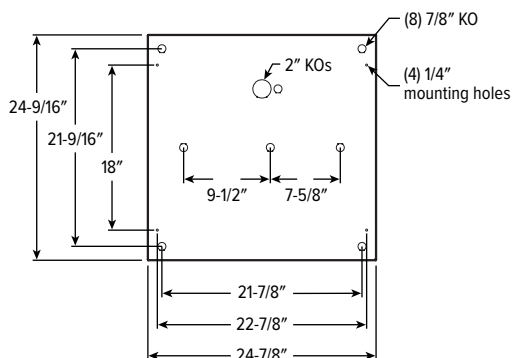
SHIELDING DETAILS



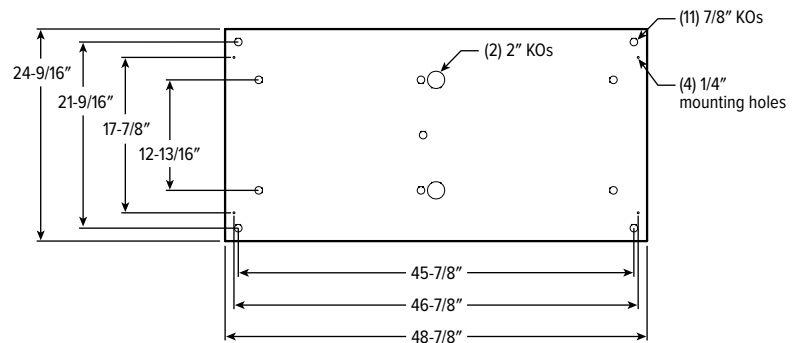
FIXTURE DETAILS

BACKVIEW

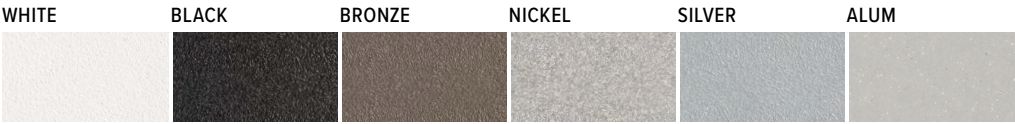
2x2



2x4



FINISH OPTIONS



For custom color, please specify RAL code or a manufacturer code with description. All custom colors other than RAL require two sample swatches, minimum 1" square.

SUSPENDED MOUNTING DETAILS

AIRCRAFT CABLE

ORDERING EXAMPLE: ACF*4P/D48				
PREFIX		TYPE	LENGTH	
ACF*4P	Four point mount adjustable aircraft cable	D 1" grid & hardpan	24	24"
		N 9/16" grid	48	48"
		S Slot grid	96	96"
			144	144"
			192	192"
			240	240"
			300	300"

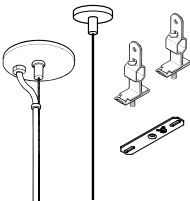
CORD OPTIONS

Units specified with aircraft cable require cord. Please specify cord type using ordering information below. Long fixture rows may require multiple feed points based on 18ga conductor size.

EXAMPLE: S2438D/W				
CORD TYPE	LENGTH	# OF COND. ¹⁾	WIRE SIZE	COLOR
S	24 24"	3	8D 18ga	/W White /B Black
	48 48"	4		
	96 96"	5		
		6		

¹⁾ Includes (2) 22ga purple & pink dimming conductors

STANDARD HARDWARE (Grid & Hardpan)



- Fixtures are provided with adjustable length aircraft cables and mounting hardware, must specify.
- One 5" canopy used at power feed location to cover the junction box. Three other suspension points use 2" canopy at the non-feed point. No J-box is required at non-feed points.

SEE NEXT PAGE FOR CONTROL DETAILS.

AVI-ON BLUETOOTH WIRELESS CONTROL DETAILS

FEATURES

Simple

- Gateway-free distributed control
- Factory pre-commissioning
- Contractor friendly installation
- Occupancy/vacancy/daylight sensing

Scalable

- Virtually unlimited network size
- Spans small offices to large warehouses
- Flexible control strategies

Secure

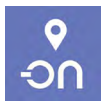
- Optional cloud connectivity
- UL IoT platinum security rating
- DLC 5.0 compliant

COMMISSIONING & INSTALLATION TOOLS

Avi-on mobile apps provide intuitive, quick installation and commissioning. Pro tools are available to qualified installers. Live commissioning training and on-site or remote support by Avi-on must be ordered separately through Avi-on.



Commissioning
Mobile App

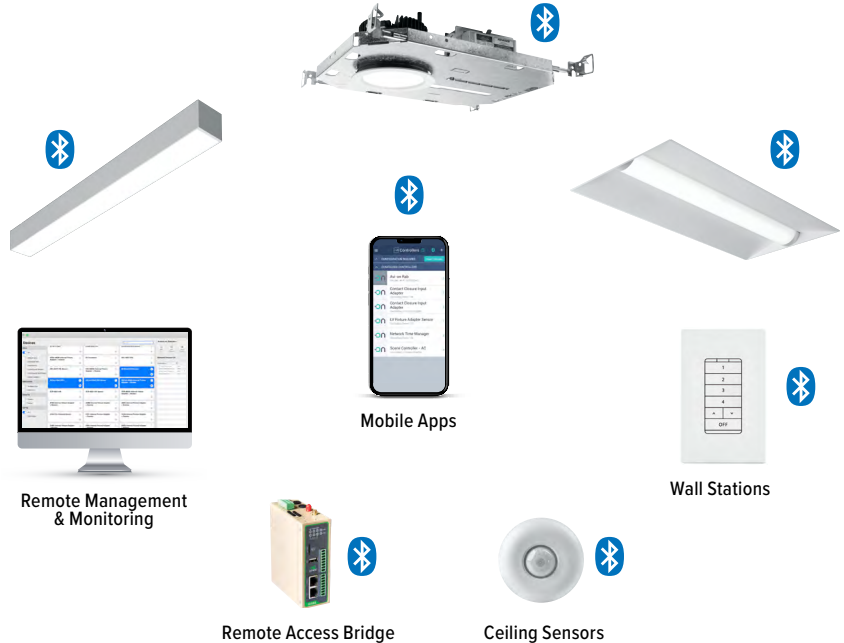


Zone Scanner
Web App



Commissioning
Pro App

SYSTEM COMPONENTS



The Bluetooth® word mark and logos are registered trademarks owned by Bluetooth SIG, Inc. and any use of such marks by Avi-on is under license. Other trademarks and trade names are those of their respective owners.

ACCESSORIES

WALL STATIONS	
AVI-2401AC	Scene controller - numbered 1-4, 120-277VAC
AVI-2402BAT	Scene controller - numbered 1-4, battery powered
AVI-2401AC-2	Dimmer with presets - percentages, 120-277VAC
AVI-2402BAT-2	Dimmer with presets - percentages, battery powered
AVI-2401AC-3	On/off/dimming, 120-277VAC
AVI-2402BAT-3	On/off/dimming, battery powered

NETWORK	
AVI-RAB-LTE	Remote access bridge – LTE connection
AVI-2001RAB-01-C	Remote access bridge – Wifi connection
AVI-KIT-NTM	Network time manager with battery backup
CEILING MOUNT SENSORS	
AVI-KIT-SEN-DUCM	PIR motion and ultrasonic sensor kit
AVI-KIT-SEN-ICM	PIR motion and photocell sensor kit

For load controllers and additional accessory info, see hew.com/avi-on

ADDITIONAL CONTROL/DRIVER OPTIONS

Note: Lumen restrictions apply, consult product builder at hew.com/product-builder.

CATALOG NUMBER	DESCRIPTION
AVI-LVFA/DA	Avi-on wireless fixture control for use with driver with 12V auxiliary power
AWNRR/DA	Lutron Athena wireless node integral fixture control, RF only, for use with driver with 12V auxiliary power
AWNRR/DSR	Lutron Athena wireless node integral fixture control, RF only, for use with sensor-ready driver (D4i DALI-2)
DRV	Driver prewired for non-dimming applications
DIM	Dimming driver prewired for 0-10V low voltage applications
DIM1	1% dimming driver prewired for 0-10V low voltage applications
DIM LINE	Line voltage dimming driver (TRIAC and ELV compatible, 120V only)
DIM TRC	Line voltage dimming driver (TRIAC compatible, 120V only)
SD40	40% step-dimming driver
SD50	50% step-dimming driver
DALI	DALI dimming driver
LDE1	Lutron Hi-lume 1% EcoSystem dimming LED driver

