

CATALOG #: \_\_\_\_\_

TYPE: \_\_\_\_\_

PROJECT: \_\_\_\_\_



## FEATURES

- Contoured housing, end caps and louver provide an attractive source of direct lighting
- Design elements on side panels add interest while producing subtle uplight
- Moveable mounting hardware slides easily along the length of the fixture providing variable mounting points
- Heavy-duty construction features extruded aluminum housing and die-cast end caps
- Contoured aluminum louvers improve aesthetics while shielding LEDs from view
- White louver finish improves fixture efficiency
- Wireless in-fixture control solutions available
- Made Right Here® in the USA

## SPECIFICATIONS

- HOUSING** – Extruded aluminum with die-cast end caps.
- SHIELDING** – Highly reflective white curved baffle louver with matte white acrylic overlay.
- FINISH** – Textured matte white polyester TGIC powder coat bonded to phosphate-free, multi-stage pretreated metal. All parts painted after fabrication to facilitate installation, increase efficiency, and inhibit corrosion.
- ELECTRICAL** – High-quality mid-power LED boards. L70 at 50,000 hours.
- MOUNTING** – Suspended. 1/16" diameter x 24" adjustable steel leveling aircraft cable and mounting hardware necessary for grid ceiling applications provided.
- LISTINGS** –
  - cCSAus certified as luminaire suitable for dry or damp locations.
  - Complies with the Buy American Act and other federal regulations. Request certification at [hew.com/baa](http://hew.com/baa).
- WARRANTY** – 5-year limited warranty, see [hew.com/warranty](http://hew.com/warranty).

## ORDERING EXAMPLE: AXA - 4 - L14/835 - LVRS - AC/D48 - OPTIONS - CONTROL/DIM - UNV

### ORDERING INFO

SERIES	NOMINAL LENGTH	LUMENS <sup>[1]</sup>	CRI	CCT
AXA	Stand-alone: 4' & 8' nominal lengths, fixture ships assembled	L8 800	8 80	27 2700K
	Example: 4 = 4'	L14 1,400	9 90 <sup>[2]</sup>	30 3000K
	Row-mount: Lengths specified in 4' increments			35 3500K
	Example: 12 = 12'			40 4000K
				50 5000K
<b>Product Builder</b>				
Simplify ordering & layout design with the Williams Linear Product Builder at <a href="http://hew.com">hew.com</a>				

SHIELDING <sup>[3]</sup>	MOUNTING (EXAMPLE: AC/D48) <sup>[4]</sup>	OPTIONS
LVRS Slotted uplight (3%)	Prefix Type Length	See page 2 for FINISH OPTIONS.
LVRD Linear dot uplight (3%)	AC/ D 1" grid & hardpan 24 24"	EM/10WRM Remote mount 10-watt emergency battery <sup>[5]</sup>
LVRC Closed side panels	N 9/16" grid 48 48"	EM/10WLP Low-profile 10-watt emergency battery <sup>[6]</sup>
	S Slot grid 96 96"	(L__ ) Additional lower lumen packages available. <sup>[7]</sup>
		Example: 1,000 nominal lumens = AXA-4-L14/835-LVRS-(L10).

CONTROL	DRIVER	VOLTAGE
See page 3 for ADDITIONAL CONTROL/ DRIVER OPTIONS.	See page 3 for ADDITIONAL CONTROL/ DRIVER OPTIONS.	120 120V
– None	DIM Driver with external dimming wires	277 277V
AVI-LVFA Avi-on wireless fixture control <sup>[8]</sup>	DRV Driver without external dimming wires	UNV 120-277V
AWNRLutron Athena wireless node integral fixture control, RF only <sup>[9]</sup>	DA Driver with 12V auxiliary power, without external dimming wires <sup>[10]</sup>	
	DSR Sensor-ready driver without external dimming wires (D4i DALI-2) <sup>[11]</sup>	

## NOTES

- <sup>1</sup> Nominal lumens per foot output based on LVRS Shielding, 80 CRI/3500K CCT. Actual performance may vary +/-5%, see page 2 for FIXTURE PERFORMANCE DATA. Additional lumen packages available, see options.
- <sup>2</sup> Extended lead times may apply. Consult factory for availability.
- <sup>3</sup> See page 2 for FIXTURE DETAILS.
- <sup>4</sup> See page 3 for MOUNTING DETAILS.
- <sup>5</sup> 4' only. See page 3 for MOUNTING DETAILS.
- <sup>6</sup> 8' only.

- <sup>7</sup> (L5) lumen package minimum. Specify in increments of 100 nominal lumens. Option must be specified with next higher lumen package.
- <sup>8</sup> DA Driver only. See page 4 for AVI-ON BLUETOOTH WIRELESS CONTROL DETAILS.
- <sup>9</sup> DA and DSR Drivers only.
- <sup>10</sup> Avi-on and Lutron Athena Controls only.
- <sup>11</sup> Lutron Athena Controls only.



## FIXTURE PERFORMANCE DATA

	LED PACKAGE/FOOT	DELIVERED LUMENS	WATTAGE	EFFICACY (lm/W)
4'	L8	3695	30.1	123
	L14	5645	53.8	105
8'	L8	6482	57.1	114
	L14	11289	107.6	105

- Photometrics tested in accordance with IESNA LM-79. Results based on LVRS shielding, 80 CRI/3500K CCT, average wattage for 120V through 277V input, and 25°C ambient temperature. Actual performance may vary +/-5%.
- To calculate lumen output in emergency mode, multiply the battery wattage by the efficacy.
- Use multiplier table to calculate additional options.

## MULTIPLIER TABLE

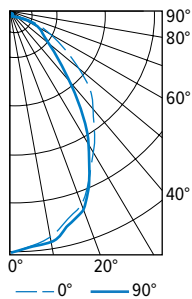
COLOR TEMPERATURE	
CCT	CONVERSION FACTOR
2700K	0.97
3000K	0.99
3500K	1.00
4000K	1.03
5000K	1.06

80 CRI	
2700K	0.80
3000K	0.82
3500K	0.83
4000K	0.86
5000K	0.89

## PHOTOMETRY

AXA-4-L14/835-LVRS-DIM-UNV Total Luminaire Output: 5645 lumens; 53.8 Watts | Efficacy: 104.9 lm/W | 80 CRI; 3500K CCT

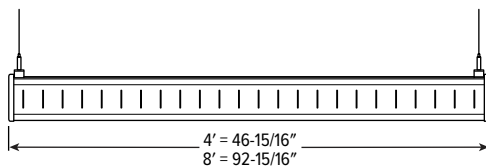


VERTICAL ANGLE	HORIZONTAL ANGLE			ZONAL LUMENS
	0°	45°	90°	
0	2640	2640	2640	
5	2572	2577	2590	245
15	2371	2392	2446	675
25	2037	2048	2126	957
35	1694	1687	1759	1069
45	1375	1334	1373	1023
55	932	861	819	773
65	546	462	401	466
75	233	199	186	225
85	67	61	65	74
90	6	17	23	
95	0	13	19	14
105	2	14	22	16
115	7	22	24	19
125	10	26	28	20
135	17	30	31	21
145	24	31	31	19
155	28	34	35	15
165	32	41	41	11
175	36	36	34	3
180	34	34	34	

LUMEN SUMMARY	ZONE	LUMENS	% FIXTURE
	0 - 30	1876	33
	0 - 40	2946	52
	0 - 60	4741	84
	0 - 90	5506	98
	90 - 130	70	1
	90 - 150	110	2
	90 - 180	139	3
	0 - 180	5645	100

## FIXTURE DETAILS

### SIDE VIEW



### LVRS



### LVRD

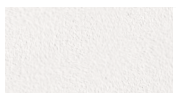


### LVRC



## FINISH OPTIONS

### WHITE



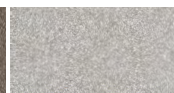
### BLACK



### BRONZE



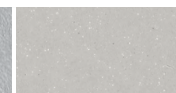
### NICKEL



### SILVER



### ALUM

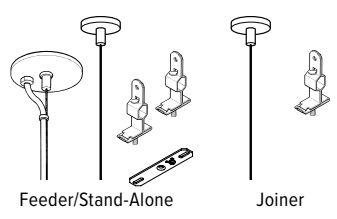


For custom color, please specify RAL code or a manufacturer code with description. All custom colors other than RAL require two sample swatches, minimum 1" square.



MOUNTING DETAILS

STANDARD HARDWARE FOR SUSPENDED PRODUCT (Grid and Hardpan)



Feeder/Stand-Alone

Joiner

Notes:

- Fixtures are provided with adjustable length aircraft cables and mounting hardware, must specify.
- Electrical supply is brought into the feeder fixture, either as part of a row or as a stand-alone unit. Joiner fixtures complete the row.
- The feeder kits are standard with a 5" canopy to cover the junction box and a 2" canopy at the non-feed point. No J-box is required at non-feed points.

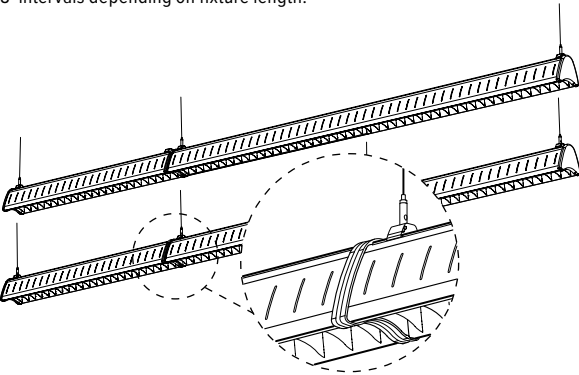
AIRCRAFT CABLE



Mounting brackets can be positioned anywhere along the length of the fixture housing. It is recommended to locate mounting brackets no more than 8" away from the end plates of the fixture.

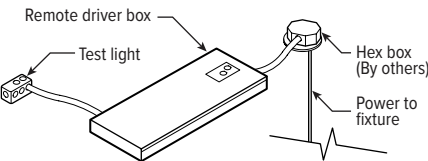
CONTINUOUS ROW FIXTURES

When row mounting fixtures, joint between fixtures will be visible at 4' and 8' intervals depending on fixture length.



REMOTE MOUNT BATTERY

Max remote distance 50'.



ADDITIONAL CONTROL/DRIVER OPTIONS

Note: Lumen restrictions apply, consult product builder at [hew.com/product-builder](http://hew.com/product-builder).

CATALOG NUMBER	DESCRIPTION
AVI-LVFA/DA	Avi-on wireless fixture control for use with driver with 12V auxiliary power
AWNDR/DA	Lutron Athena wireless node integral fixture control, RF only, for use with driver with 12V auxiliary power
AWNDR/DSR	Lutron Athena wireless node integral fixture control, RF only, for use with sensor-ready driver (D4i DALI-2)
DRV	Driver prewired for non-dimming applications
DIM	Dimming driver prewired for 0-10V low voltage applications
DIM1	1% dimming driver prewired for 0-10V low voltage applications
DIM LINE	Line voltage dimming driver (TRIAC and ELV compatible, 120V only)
DIM TRC	Line voltage dimming driver (TRIAC compatible, 120V only)
SD40	40% step-dimming driver
SD50	50% step-dimming driver
DALI	DALI dimming driver
LDE1	Lutron Hi-lume 1% EcoSystem dimming LED driver

AVI-ON BLUETOOTH WIRELESS CONTROL DETAILS

FEATURES

Simple

- Gateway-free distributed control
- Factory pre-commissioning
- Contractor friendly installation
- Occupancy/vacancy/daylight sensing

Scalable

- Virtually unlimited network size
- Spans small areas to large garages
- Flexible control strategies

Secure

- Optional cloud connectivity
- UL IoT platinum security rating
- DLC 5.0 compliant

COMMISSIONING & INSTALLATION TOOLS

Avi-on mobile apps provide intuitive, quick installation and commissioning. Pro tools are available to qualified installers. Live commissioning training and on-site or remote support by Avi-on must be ordered separately through Avi-on.



Commissioning  
Mobile App



Zone Scanner  
Web App



Commissioning  
Pro App

SYSTEM COMPONENTS



The Bluetooth® word mark and logos are registered trademarks owned by Bluetooth SIG, Inc. and any use of such marks by Avi-on is under license. Other trademarks and trade names are those of their respective owners.

ACCESSORIES

WALL STATIONS	
AVI-2401AC	Scene controller - numbered 1-4, 120-277VAC
AVI-2402BAT	Scene controller - numbered 1-4, battery powered
AVI-2401AC-2	Dimmer with presets - percentages, 120-277VAC
AVI-2402BAT-2	Dimmer with presets - percentages, battery powered
AVI-2401AC-3	On/off/dimming, 120-277VAC
AVI-2402BAT-3	On/off/dimming, battery powered

NETWORK	
AVI-RAB-LTE	Remote access bridge
AVI-KIT-NTM	Network time manager with battery backup
CEILING MOUNT SENSORS	
AVI-KIT-SEN-DUCM	PIR motion and ultrasonic sensor kit
AVI-KIT-SEN-ICM	PIR motion and photocell sensor kit

For load controllers and additional accessory info, see [hew.com/avi-on](http://hew.com/avi-on)

