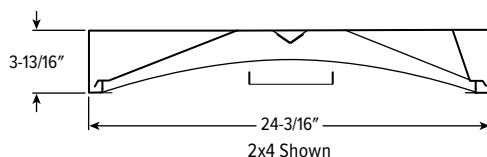


ATS3^{LED} Architectural Surface – Straight Floating Center



CATALOG #: _____

TYPE: _____

PROJECT: _____

FEATURES

- Backlit curved lens provides uniform illumination for visual comfort
- Distinct straight floating center detail creates a highly-aesthetic presence
- Maximize energy savings with efficacies as high as 113 lm/w
- Optional gasketed acrylic lens helps protect against contaminants
- Wireless in-fixture control solutions available
- Made Right Here® in the USA



SPECIFICATIONS

- HOUSING** – 20-gauge die-formed, welded C.R.S.
- DOOR FRAME** – Hinged, flat, extruded aluminum door frame with optical assembly.
- SHIELDING** – Diffuse polycarbonate lens and acrylic center standard.
- FINISH** – 95% reflective white polyester powder coat bonded to phosphate-free, multi-stage pretreated metal. All parts painted after fabrication to facilitate installation, increase efficiency, and inhibit corrosion.
- ELECTRICAL** – High-quality mid-power LED boards. L70 >60,000 hours per IES TM-21.
- MOUNTING** – Surface or suspended
- LISTINGS** –
 - cETLus conforms to UL STD 1598 and UL STD 8750. Certified to CAN/CSA STD C22.2 No. 250.0. Suitable for damp locations.
 - Complies with the Buy American Act and other federal regulations. Request certification at hew.com/baa.
- WARRANTY** – 5-year limited warranty, see hew.com/warranty.

ORDERING EXAMPLE: ATS3 - 2 4 - L70/835 - D - OPTIONS - CONTROL/DIM - UNV

ORDERING INFO

SERIES	WIDTH	LENGTH	LUMENS ^[1]	CRI	CCT	SHIELDING
ATS3	1 1'	2 2' ^[2]	1x4	8 80	27 2700K	D Diffuse matte acrylic center
	2 2'	4 4'	L30 3,000lm	9 90 ^[3]	30 3000K	P Perforated center ^[4]
			L50 5,000lm		35 3500K	
			L63 6,300lm		40 4000K	
			2x2		50 5000K	
			L30 3,000lm			
			L40 4,000lm			
			L50 5,000lm			
			2x4			
			L40 4,000lm			
			L55 5,500lm			
			L70 7,000lm			
			L100 10,000lm			

OPTIONS^[5]

EM/10W	10-watt emergency battery ^[7]
EM/10WLP	Low-profile 10-watt emergency driver ^[8]
EM/12W	12-watt emergency battery ^[9]
(L___)	Additional lower lumen packages available. ^[10] Example: 5,000 nominal lumens = ATS3-24-L55/835-D-(L50).
SS	Sani-shield acrylic cover with double gasket. ^[11]
SS/PC	Sani-shield polycarbonate cover with double gasket ^[12]
AMW	Anti-microbial white finish

CONTROL^[6]

See page 5 for **ADDITIONAL CONTROL OPTIONS**.

–	None
AVI-LVFA	Avi-on wireless fixture control ^[13]
AVI-LVFA-CS2-PIR	Avi-on wireless fixture control with PIR motion and daylight sensor ^[14]
AWNRR	Lutron Athena wireless node integral fixture control, RF only ^[15]
AWNS	Lutron Athena wireless node integral fixture control, RF with daylight and occupancy sensing ^[16]

DRIVER

See page 5 for **ADDITIONAL DRIVER OPTIONS**.

DIM	Driver with external dimming wires
DRV	Driver without external dimming wires
DA	Driver with 12V auxiliary power, without external dimming wires ^[17]
DSR	Sensor-ready driver without external dimming wires (DAI DALI-2) ^[18]

VOLTAGE

120	120V
277	277V
UNV	120-277V
347	347V ^[19]

NOTES

- Lumen output based on 80 CRI/3500K CCT, D shielding. Actual lumens may vary +/-5%, see page 2 for **FIXTURE PERFORMANCE DATA**. Additional lumen package available, see options.
- 2' width only.
- Extended lead times may apply. Consult factory for availability.
- Decreases lumen output by 15%
- See page 3 for **FINISH OPTIONS**. Custom colors available upon request. Suspended mounting available. See page 3 for **SUSPENDED MOUNTING DETAILS**.
- See page 4 for **AVI-ON BLUETOOTH WIRELESS CONTROL DETAILS**. See page 3 for **SENSOR & NODE PLACEMENT DETAILS**.
- 2x2, 2x4 only.

- 1x4 only.
- 2x2, 2x4 only. Not available when CEC regulations are required.
- Specify in increments of 100 nominal lumens. Option must be specified with next higher lumen package.
- Reduces lumen output by 10%.
- Reduces lumen output by 10%.
- DA Driver only.
- DA Driver only.
- DA and DSR Drivers only.
- DA and DSR Drivers only.
- Avi-on and Lutron Athena Controls only.
- Lutron Vive and Athena Controls only.
- Not available with EM batteries, DA, or DSR drivers.



ATS3^{LED} Architectural Surface – Straight Floating Center

FIXTURE PERFORMANCE DATA

	LED PACKAGE	DELIVERED LUMENS	WATTAGE	EFFICACY (lm/W)
1x4	L30	2816	29.5	95
	L50	4702	48.3	97
	L63	5876	62.4	94
2x2	L30	2816	29.5	95
	L40	3831	37.2	103
	L50	4701	48.3	97
2x4	L40	3874	34.2	113
	L55	5302	48.0	110
	L70	6722	63.3	106
	L100	9720	86.9	112

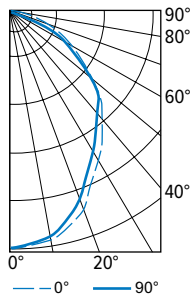
MULTIPLIER TABLE

	COLOR TEMPERATURE	
	CCT	CONVERSION FACTOR
80 CRI	2700K	0.97
	3000K	0.99
	3500K	1.00
	4000K	1.03
90 CRI	5000K	1.06
	2700K	0.80
	3000K	0.82
	3500K	0.83
	4000K	0.86
	5000K	0.89

- Photometrics tested in accordance with IESNA LM-79. Results shown are based on 25°C ambient temperature.
- Wattage shown is average for 120V through 277V input.
- Results based on 3500K, 80 CRI, actual lumens may vary +/-5%
- To calculate lumen output in emergency mode, multiply the battery wattage by the efficacy.
- Use multiplier table to calculate additional options.

PHOTOMETRY

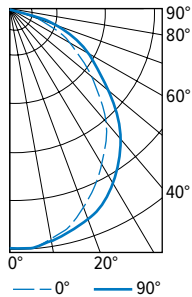
ATS3-14-L63/835-D-DIM-UNV Total Luminaire Output: 5876 lumens; 62.4 Watts | Efficacy: 94.0 lm/W | 80 CRI; 3500K CCT



CANDLEPOWER DISTRIBUTION	VERTICAL ANGLE	HORIZONTAL ANGLE			ZONAL LUMENS
		0°	45°	90°	
	0	2679	2679	2679	
	5	2651	2643	2637	251
	15	2510	2475	2444	697
	25	2144	2081	2038	968
	35	1786	1718	1691	1081
	45	1450	1400	1387	1070
	55	1000	976	939	871
	65	655	635	469	582
	75	319	227	208	281
	85	88	61	45	75
	90	0	0	0	

LUMEN SUMMARY	ZONE	LUMENS	% FIXTURE
	0 - 30	1916	33
	0 - 40	2997	51
	0 - 60	4938	84
	0 - 90	5876	100
	0 - 180	5876	100

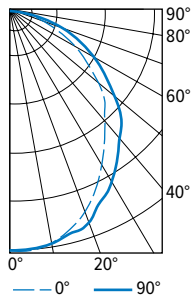
ATS3-22-L50/835-D-DIM-UNV Total Luminaire Output: 4701 lumens; 48.3 Watts | Efficacy: 97 lm/W | 80 CRI; 3500K CCT



CANDLEPOWER DISTRIBUTION	VERTICAL ANGLE	HORIZONTAL ANGLE			ZONAL LUMENS
		0°	45°	90°	
	0	1831	1831	1831	
	5	1831	1822	1820	173
	15	1719	1735	1762	490
	25	1514	1590	1654	730
	35	1253	1359	1461	852
	45	984	1094	1191	838
	55	696	820	892	716
	65	431	546	613	532
	75	214	313	332	305
	85	48	41	30	64
	90	0	0	0	

LUMEN SUMMARY	ZONE	LUMENS	% FIXTURE
	0 - 30	1393	30
	0 - 40	2246	48
	0 - 60	3800	81
	0 - 90	4701	100
	0 - 180	4701	100

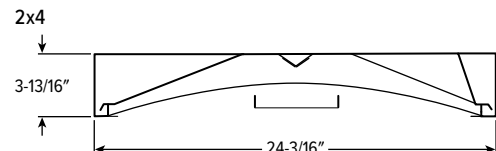
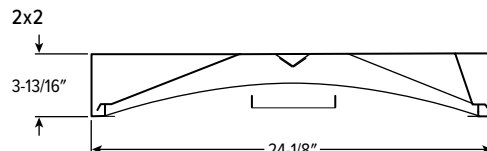
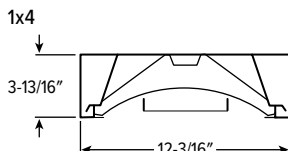
ATS3-24-L70/835-D-DIM-UNV Total Luminaire Output: 6722 lumens; 63 Watts | Efficacy: 106 lm/W | 82 CRI; 3500K CCT



CANDLEPOWER DISTRIBUTION	VERTICAL ANGLE	HORIZONTAL ANGLE			ZONAL LUMENS
		0°	45°	90°	
	0	2678	2678	2678	
	5	2664	2665	2667	253
	15	2514	2536	2569	715
	25	2175	2246	2331	1038
	35	1762	1886	2010	1182
	45	1419	1587	1692	1192
	55	981	1137	1210	1004
	65	656	802	861	768
	75	342	467	467	457
	85	102	73	68	112
	90	0	0	0	

LUMEN SUMMARY	ZONE	LUMENS	% FIXTURE
	0 - 30	2006	30
	0 - 40	3188	47
	0 - 60	5384	80
	0 - 90	6722	100
	0 - 180	6722	100

CROSS SECTIONS



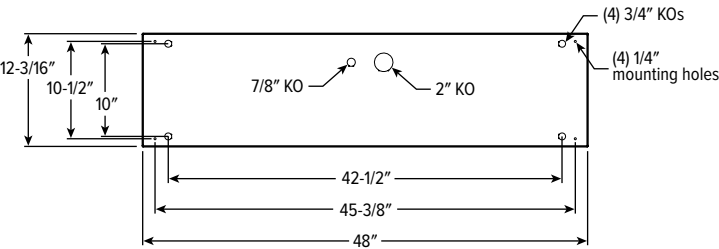
ATS3 LED

Architectural Surface – Straight Floating Center

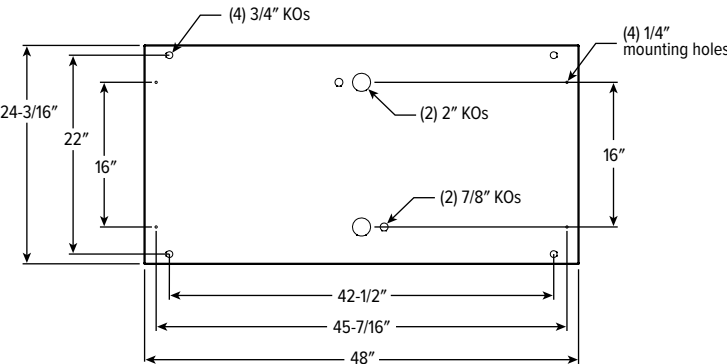
FIXTURE DETAILS

BACKVIEW

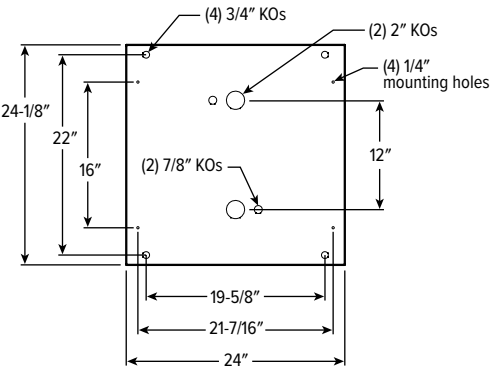
1x4



2x4

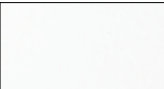


2x2



FINISH OPTIONS

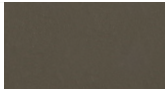
WHITE



BLACK



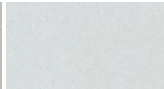
BRONZE



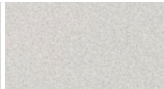
NICKEL



SILVER



ALUM



For custom color, please specify RAL code or a manufacturer code with description. All custom colors other than RAL require two sample swatches, minimum 1" square.

SUSPENDED MOUNTING DETAILS

AIRCRAFT CABLE

ORDERING EXAMPLE: ACF*4P/D48				
PREFIX	TYPE	LENGTH		
ACF*4P	Four point mount adjustable aircraft cable	D 1" grid & hardpan	24	24"
		N 9/16" grid	48	48"
		S Slot grid	96	96"
			144	144"
			192	192"
			240	240"
			300	300"

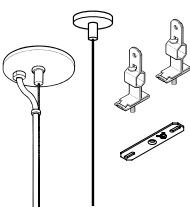
CORD OPTIONS

Units specified with aircraft cable require cord. Please specify cord type using ordering information below. Long fixture rows may require multiple feed points based on 18ga conductor size.

EXAMPLE: S2438D/W				
CORD TYPE	LENGTH	# OF COND. ¹⁾	WIRE SIZE	COLOR
S	24 24"	3	8D 18ga	/W White /B Black
	48 48"	4		
	96 96"	5		
		6		

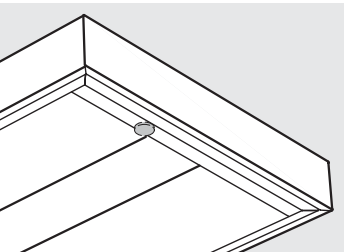
¹⁾ Includes (2) 22ga purple & pink dimming conductors

STANDARD HARDWARE (Grid & Hardpan)



- Fixtures are provided with adjustable length aircraft cables and mounting hardware, must specify.
- One 5" canopy used at power feed location to cover the junction box. Three other suspension points use 2" canopy at the non-feed point. No J-box is required at non-feed points.

SENSOR & NODE PLACEMENT DETAILS



H.E. Williams, Inc.

Carthage, Missouri

www.hew.com

417-358-4065

Designed and Manufactured in the USA

REV.08/11/23.LA

Recessed
Page 3 of 5

ATS3^{LED} Architectural Surface – Straight Floating Center

AVI-ON BLUETOOTH WIRELESS CONTROL DETAILS

FEATURES

Simple

- Gateway-free distributed control
- Factory pre-commissioning
- Contractor friendly installation
- Occupancy/vacancy/daylight sensing

Scalable

- Virtually unlimited network size
- Spans small offices to large warehouses
- Flexible control strategies

Secure

- Optional cloud connectivity
- UL IoT platinum security rating
- DLC 5.0 compliant

COMMISSIONING & INSTALLATION TOOLS

Avi-on mobile apps provide intuitive, quick installation and commissioning. Pro tools are available to qualified installers. Live commissioning training and on-site or remote support by Avi-on must be ordered separately through Avi-on.



Commissioning
Mobile App

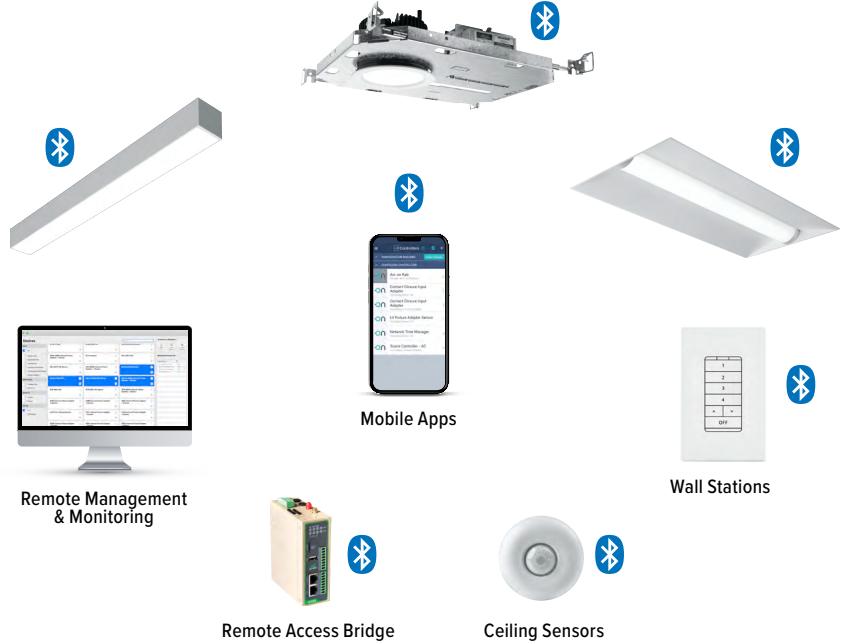


Zone Scanner
Web App



Commissioning
Pro App

SYSTEM COMPONENTS



The Bluetooth® word mark and logos are registered trademarks owned by Bluetooth SIG, Inc. and any use of such marks by Avi-on is under license. Other trademarks and trade names are those of their respective owners.

ACCESSORIES

WALL STATIONS	
AVI-2401AC	Scene controller - numbered 1-4, 120-277VAC
AVI-2402BAT	Scene controller - numbered 1-4, battery powered
AVI-2401AC-2	Dimmer with presets - percentages, 120-277VAC
AVI-2402BAT-2	Dimmer with presets - percentages, battery powered
AVI-2401AC-3	On/off/dimming, 120-277VAC
AVI-2402BAT-3	On/off/dimming, battery powered

NETWORK	
AVI-RAB-LTE	Remote access bridge – LTE connection
AVI-2001RAB-01-C	Remote access bridge – Wifi connection
AVI-KIT-NTM	Network time manager with battery backup
CEILING MOUNT SENSORS	
AVI-KIT-SEN-DUCM	PIR motion and ultrasonic sensor kit
AVI-KIT-SEN-ICM	PIR motion and photocell sensor kit

For load controllers and additional accessory info, see hew.com/avi-on

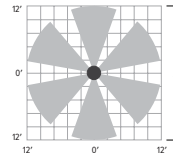
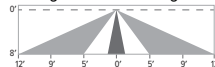
AVI-LVFA-CS2-PIR Avi-on wireless fixture control with PIR motion and daylight sensor. DA Driver only.

SPECIFICATIONS	
TYPE	PIR Motion + Daylight
MOUNTING HEIGHT	8' – 10'
DETECTION ANGLE	360°
TEMPERATURE RANGE	-30° to 50°C
RELATIVE HUMIDITY	10 to 80% non-condensing
IP RATING	IP20
MANUFACTURER	Avi-On

SENSOR COVERAGE PATTERNS

Side View

8' height: Ø24' coverage



SENSOR DETAIL



Dimensions: 13/16" x 2-1/4"



ATS3^{LED} Architectural Surface – Straight Floating Center

ADDITIONAL CONTROL OPTIONS

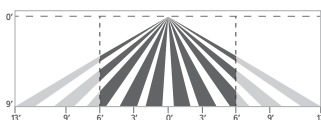
AWNS Lutron Athena wireless node integral fixture control, RF with daylight and occupancy sensing. DA and DSR Drivers only.

SPECIFICATIONS	
TYPE	Radio Frequency
MOUNTING HEIGHT	8' – 12'
DETECTION ANGLE	360°
TEMPERATURE RANGE	0° to 55°C
RELATIVE HUMIDITY	0 to 90%, non-condensing
COMMISSIONING	Clear Connect gateway – Type X with app (iOS or Android)
MANUFACTURER	Lutron



SENSOR COVERAGE PATTERNS

9' height: ø12' coverage



Motion Sensor Coverage

CEILING HEIGHT	COVERAGE AREA (SQ FT)
8'	114
9'	144
10'	178
12'	256

SENSOR DETAIL



Dimensions: ø1-1/8"

ATHENA CONTROL OPTIONS

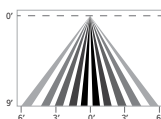
CATALOG NUMBER	DESCRIPTION
AWNDR	Lutron Athena wireless node integral fixture control, RF only, for use with D4i DALI-2 or driver with 12V auxiliary power
AWNS	Lutron Athena wireless node integral fixture control, RF with daylight and occupancy sensing, for use with D4i DALI-2 or driver with 12V auxiliary power
AWNDR-BL	Lutron Athena wireless node integral fixture control, RF only, for use with D4i DALI-2 or driver with 12V auxiliary power, black finish
AWNS-BL	Lutron Athena wireless node integral fixture control, RF with daylight and occupancy sensing, for use with D4i DALI-2 or driver with 12V auxiliary power, black finish

VDO Lutron Vive integral fixture control, RF with daylight and occupancy sensor (DFCSJ-OEM-OCC). DSR or LDE Drivers only. LDE drivers require driver interface

SPECIFICATIONS	
TYPE	PIR Motion + Daylight
MOUNTING HEIGHT	8' – 12'
DETECTION ANGLE	360°
TEMPERATURE RANGE	0° to 55°C
RELATIVE HUMIDITY	0 to 90%, non-condensing
COMMISSIONING	App (iOS or Android)
MANUFACTURER	Lutron

SENSOR COVERAGE PATTERNS

9' height: ø12' coverage



Motion Sensor Coverage

CEILING HEIGHT	COVERAGE AREA (SQ FT)
8'	114
9'	144
10'	178
12'	256

SENSOR DETAIL



Dimensions: 2-11/16" x 1"

VIVE CONTROL OPTIONS

CATALOG NUMBER	DESCRIPTION
VRF	Lutron Vive integral fixture control, RF only (DFCSJ-OEM-RF), for use with sensor-ready driver
VDO	Lutron Vive integral fixture control, RF with daylight and occupancy sensor (DFCSJ-OEM-OCC), for use with sensor-ready driver
VRF/DBI	Lutron Vive integral fixture control, RF only (DFCSJ-OEM-RF) and digital link interface, for use with Lutron Hi-lume 1% EcoSystem dimming LED driver
VDO/DBI	Lutron Vive integral fixture control, RF with daylight and occupancy sensor (DFCSJ-OEM-OCC) and digital link interface, for use with Lutron Hi-lume 1% EcoSystem dimming LED driver

ADDITIONAL DRIVER OPTIONS

Note: Lumen restrictions apply, consult product builder at hew.com/product-builder.

CATALOG NUMBER	DESCRIPTION
DRV	Driver prewired for non-dimming applications
DIM	Dimming driver prewired for 0-10V low voltage applications
DIM1	1% dimming driver prewired for 0-10V low voltage applications
DIM LINE	Line voltage dimming driver (TRIAC and ELV compatible, 120V only)
DIM TRC	Line voltage dimming driver (TRIAC compatible, 120V only)
DA	Driver with 12V auxiliary power
DSR	Sensor-ready driver (D4i DALI-2)
SD40	40% step-dimming driver
SD50	50% step-dimming driver
DALI	DALI dimming driver
LDE1	Lutron Hi-lume 1% EcoSystem dimming LED driver

