

CATALOG #: _____

TYPE: _____

PROJECT: _____

FEATURES

- Backlit curved lens provides uniform illumination for visual comfort
- Distinct curved deep center detail creates a highly-aesthetic presence
- Available with decorative inserts to customize center lens
- Maximize energy savings with efficacies as high as 118 lm/w
- Optional gasketed acrylic lens helps protect against contaminants
- Wireless in-fixture control solutions available
- Made Right Here® in the USA



ORDERING EXAMPLE: ATS2 - 2 4 - L70/835 - D - OPTIONS - CONTROL/DIM - UNV

ORDERING INFO

| SERIES | WIDTH | LENGTH | LUMENS ^[1] | CRI | CCT | SHIELDING |
|--------|-------|--------|-----------------------|---------------------|----------|---|
| ATS2 | 2 2' | 2 2' | 2x2 | 8 80 | 27 2700K | D Diffuse matte acrylic center |
| | | 4 4' | L30 3,000lm | 9 90 ^[2] | 30 3000K | P Perforated center ^[3] |
| | | | L40 4,000lm | | 35 3500K | |
| | | | L50 5,000lm | | 40 4000K | |
| | | | 2x4 | | 50 5000K | |
| | | | L40 4,000lm | | | |
| | | | L55 5,500lm | | | |
| | | | L70 7,000lm | | | |
| | | | L100 10,000lm | | | |
| | | | | | | DECORATIVE INSERTS^[4] |
| | | | | | | D11 Triple wave |
| | | | | | | D12 Brushed metal |
| | | | | | | D13 Elliptical Perf |
| | | | | | | D14 Circles |
| | | | | | | D15 Stripes |
| | | | | | | D16 Tri-Pyramid |

SPECIFICATIONS

- HOUSING** – 20-gauge die-formed, welded C.R.S.
- DOOR FRAME** – Hinged, flat, extruded aluminum door frame with optical assembly.
- SHIELDING** – Diffuse polycarbonate lens and acrylic center standard.
- FINISH** – 95% reflective white polyester powder coat bonded to phosphate-free, multi-stage pretreated metal. All parts painted after fabrication to facilitate installation, increase efficiency, and inhibit corrosion.
- ELECTRICAL** – High-quality mid-power LED boards. L70 >60,000 hours per IES TM-21.
- MOUNTING** – Surface or suspended
- LISTINGS** –
 - cETLus conforms to UL STD 1598 and UL STD 8750. Certified to CAN/CSA STD C22.2 No. 250.0. Suitable for damp locations.
 - Complies with the Buy American Act and other federal regulations. Request certification at hew.com/baa.
- WARRANTY** – 5-year limited warranty, see hew.com/warranty.

OPTIONS^[5]

| | |
|---------------|--|
| EM/10W | 10-watt emergency battery |
| EM/12W | 12-watt emergency battery ^[7] |
| (L___) | Additional lower lumen packages available. ^[8] Example: 5,000 nominal lumens = ATS2-24-L55/835-D-(L50). |
| SS | Sani-shield acrylic cover with double gasket. ^[9] |
| SS/PC | Sani-shield polycarbonate cover with double gasket ^[10] |
| AMW | Anti-microbial white finish |

CONTROL^[6]

See page 5 for **ADDITIONAL CONTROL OPTIONS**.

| | |
|-------------------------|--|
| – | None |
| AVI-LVFA | Avi-on wireless fixture control ^[11] |
| AVI-LVFA-CS2-PIR | Avi-on wireless fixture control with PIR motion and daylight sensor ^[12] |
| AWN | Lutron Athena wireless node integral fixture control, RF only ^[13] |
| AWNS | Lutron Athena wireless node integral fixture control, RF with daylight and occupancy sensing ^[14] |

DRIVER

See page 5 for **ADDITIONAL DRIVER OPTIONS**.

| | |
|------------|---|
| DIM | Driver with external dimming wires |
| DRV | Driver without external dimming wires |
| DA | Driver with 12V auxiliary power, without external dimming wires ^[15] |
| DSR | Sensor-ready driver without external dimming wires (D4i DALI-2) ^[16] |

VOLTAGE

| | |
|------------|----------------------|
| 120 | 120V |
| 277 | 277V |
| UNV | 120-277V |
| 347 | 347V ^[17] |

NOTES

- Lumen output based on 80 CRI/3500K CCT, D shielding. Actual lumens may vary +/-5%, see page 2 for **FIXTURE PERFORMANCE DATA**. Additional lumen package available, see options.
- Extended lead times may apply. Consult factory for availability.
- Decreases lumen output by 15%
- Only available with D shielding option. See page 3 for **DIFFUSE CENTER DECORATIVE INSERT DETAILS**.
- See page 3 for **FINISH OPTIONS**. Custom colors available upon request. Suspended mounting available. See page 3 for **SUSPENDED MOUNTING DETAILS**.
- See page 4 for **AVI-ON BLUETOOTH WIRELESS CONTROL DETAILS**. See page 3 for **SENSOR & NODE PLACEMENT DETAILS**.
- Not available when CEC regulations are required.
- Specify in increments of 100 nominal lumens. Option must be specified with next higher lumen package.
- Reduces lumen output by 10%.
- Reduces lumen output by 10%.
- DA Driver only.
- DA Driver only.
- DA and DSR Drivers only.
- DA and DSR Drivers only.
- Avi-on and Lutron Athena Controls only.
- Lutron Vive and Athena Controls only.
- Not available with EM batteries, DA, or DSR drivers.



ATS2^{LED} Architectural Surface – Curved Deep Center

FIXTURE PERFORMANCE DATA

| | LED PACKAGE | DELIVERED LUMENS | WATTAGE | EFFICACY (lm/W) |
|-----|-------------|------------------|---------|-----------------|
| 2x2 | L30 | 3119 | 29.5 | 106 |
| | L40 | 4243 | 37.2 | 114 |
| | L50 | 5208 | 48.3 | 108 |
| 2x4 | L40 | 4117 | 34.2 | 120 |
| | L55 | 5633 | 48.0 | 117 |
| | L70 | 7143 | 63.3 | 113 |
| | L100 | 10328 | 86.9 | 119 |

MULTIPLIER TABLE

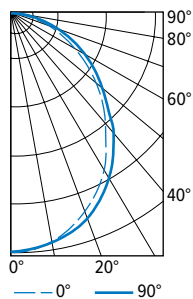
| COLOR TEMPERATURE | |
|-------------------|-------------------|
| CCT | CONVERSION FACTOR |
| 2700K | 0.97 |
| 3000K | 0.99 |
| 3500K | 1.00 |
| 4000K | 1.03 |
| 5000K | 1.06 |

| | | |
|--------|-------|------|
| 80 CRI | 2700K | 0.80 |
| | 3000K | 0.82 |
| | 3500K | 0.83 |
| | 4000K | 0.86 |
| | 5000K | 0.89 |

- Photometrics tested in accordance with IESNA LM-79. Results shown are based on 25°C ambient temperature.
- Wattage shown is average for 120V through 277V input.
- Results based on 3500K, 80 CRI, actual lumens may vary +/-5%
- To calculate lumen output in emergency mode, multiply the battery wattage by the efficacy.
- Use multiplier table to calculate additional options.

PHOTOMETRY

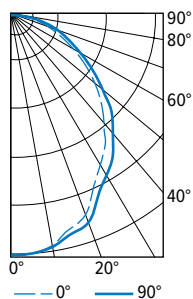
ATS2-22-L40/835-D-DIM-UNV Total Luminaire Output: 4117 lumens; 34.2 Watts | Efficacy: 120 lm/W | 80 CRI; 3500K CCT



| CANDLEPOWER DISTRIBUTION | VERTICAL ANGLE | HORIZONTAL ANGLE | | | ZONAL LUMENS |
|--------------------------|----------------|------------------|------|------|--------------|
| | | 0° | 45° | 90° | |
| | 0 | 1729 | 1729 | 1729 | |
| | 5 | 1729 | 1729 | 1731 | 164 |
| | 15 | 1618 | 1636 | 1656 | 460 |
| | 25 | 1398 | 1439 | 1473 | 663 |
| | 35 | 1171 | 1225 | 1268 | 757 |
| | 45 | 888 | 945 | 984 | 723 |
| | 55 | 620 | 669 | 694 | 597 |
| | 65 | 397 | 440 | 461 | 431 |
| | 75 | 201 | 241 | 253 | 249 |
| | 85 | 52 | 65 | 60 | 72 |
| | 90 | 0 | 0 | 0 | |

| LUMEN SUMMARY | ZONE | LUMENS | % FIXTURE |
|---------------|---------|--------|-----------|
| | 0 - 30 | 1287 | 31 |
| | 0 - 40 | 2044 | 50 |
| | 0 - 60 | 3364 | 82 |
| | 0 - 90 | 4117 | 100 |
| | 0 - 180 | 4117 | 100 |

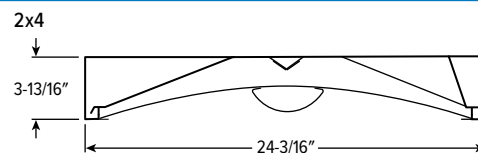
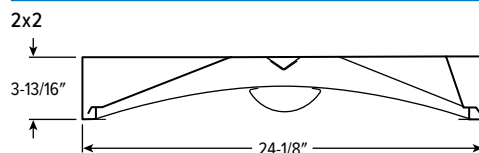
ATS2-24-L70/835-D-DIM-UNV Total Luminaire Output: 7143 lumens; 63.3 Watts | Efficacy: 113 lm/W | 80 CRI; 3500K CCT



| CANDLEPOWER DISTRIBUTION | VERTICAL ANGLE | HORIZONTAL ANGLE | | | ZONAL LUMENS |
|--------------------------|----------------|------------------|------|------|--------------|
| | | 0° | 45° | 90° | |
| | 0 | 3000 | 3000 | 3000 | |
| | 5 | 3000 | 3000 | 3004 | 284 |
| | 15 | 2807 | 2839 | 2873 | 798 |
| | 25 | 2425 | 2496 | 2556 | 1151 |
| | 35 | 2032 | 2126 | 2200 | 1314 |
| | 45 | 1540 | 1639 | 1708 | 1254 |
| | 55 | 1076 | 1161 | 1205 | 1036 |
| | 65 | 690 | 763 | 800 | 749 |
| | 75 | 349 | 418 | 439 | 432 |
| | 85 | 90 | 113 | 103 | 126 |
| | 90 | 0 | 0 | 0 | |

| LUMEN SUMMARY | ZONE | LUMENS | % FIXTURE |
|---------------|---------|--------|-----------|
| | 0 - 30 | 2233 | 31 |
| | 0 - 40 | 3547 | 50 |
| | 0 - 60 | 5837 | 82 |
| | 0 - 90 | 7143 | 100 |
| | 0 - 180 | 7143 | 100 |

CROSS SECTIONS

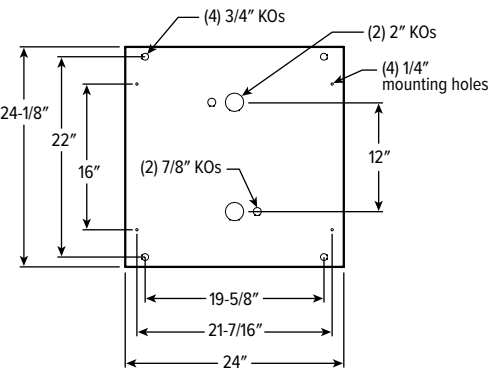


ATS2^{LED} Architectural Surface – Curved Deep Center

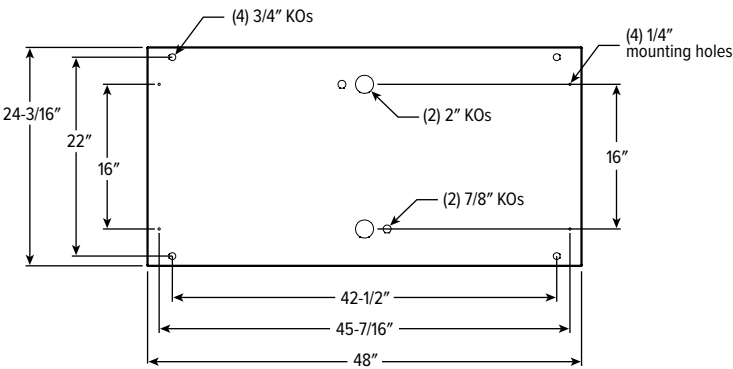
FIXTURE DETAILS

BACKVIEW

2x2



2x4



FINISH OPTIONS

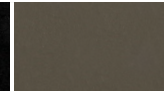
WHITE



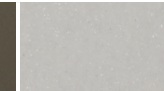
BLACK



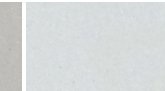
BRONZE



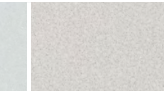
NICKEL



SILVER



ALUM



For custom color, please specify RAL code or a manufacturer code with description. All custom colors other than RAL require two sample swatches, minimum 1" square.

DIFFUSE CENTER DECORATIVE INSERT DETAILS

TRIPLE WAVE



BRUSHED METAL



ELLIPTICAL PERF



CIRCLES



STRIPES



TRI-PYRAMID



SUSPENDED MOUNTING DETAILS

AIRCRAFT CABLE

| ORDERING EXAMPLE: ACF*4P/D48 | | | |
|------------------------------|--|---------------------|----------|
| PREFIX | TYPE | LENGTH | |
| ACF*4P | Four point mount adjustable aircraft cable | D 1" grid & hardpan | 24 24" |
| | | N 9/16" grid | 48 48" |
| | | S Slot grid | 96 96" |
| | | | 144 144" |
| | | | 192 192" |
| | | | 240 240" |
| | | | 300 300" |

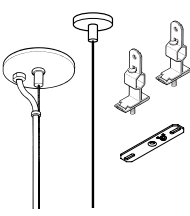
CORD OPTIONS

Units specified with aircraft cable require cord. Please specify cord type using ordering information below. Long fixture rows may require multiple feed points based on 18ga conductor size.

| EXAMPLE: S2438D/W | | | | |
|-------------------|--------|--------------------------|-----------|----------------------|
| CORD TYPE | LENGTH | # OF COND. ¹⁾ | WIRE SIZE | COLOR |
| S | 24 24" | 3 | 8D 18ga | /W White /B Black |
| | 48 48" | 4 | | |
| | 96 96" | 5 | | |
| | | 6 | | |

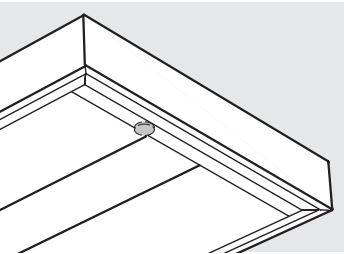
¹⁾ Includes (2) 22ga purple & pink dimming conductors

STANDARD HARDWARE (Grid & Hardpan)



- Fixtures are provided with adjustable length aircraft cables and mounting hardware, must specify.
- One 5" canopy used at power feed location to cover the junction box. Three other suspension points use 2" canopy at the non-feed point. No J-box is required at non-feed points.

SENSOR & NODE PLACEMENT DETAILS



ATS2^{LED} Architectural Surface – Curved Deep Center

AVI-ON BLUETOOTH WIRELESS CONTROL DETAILS

FEATURES

Simple

- Gateway-free distributed control
- Factory pre-commissioning
- Contractor friendly installation
- Occupancy/vacancy/daylight sensing

Scalable

- Virtually unlimited network size
- Spans small offices to large warehouses
- Flexible control strategies

Secure

- Optional cloud connectivity
- UL IoT platinum security rating
- DLC 5.0 compliant

COMMISSIONING & INSTALLATION TOOLS

Avi-on mobile apps provide intuitive, quick installation and commissioning. Pro tools are available to qualified installers. Live commissioning training and on-site or remote support by Avi-on must be ordered separately through Avi-on.



Commissioning
Mobile App

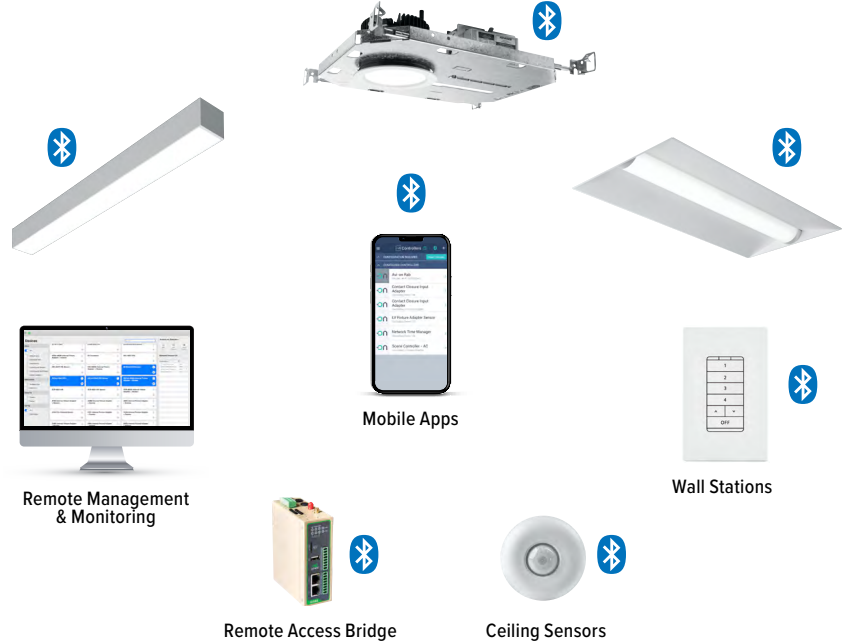


Zone Scanner
Web App



Commissioning
Pro App

SYSTEM COMPONENTS



The Bluetooth® word mark and logos are registered trademarks owned by Bluetooth SIG, Inc. and any use of such marks by Avi-on is under license. Other trademarks and trade names are those of their respective owners.

ACCESSORIES

| WALL STATIONS | |
|---------------|--|
| AVI-2401AC | Scene controller - numbered 1-4, 120-277VAC |
| AVI-2402BAT | Scene controller - numbered 1-4, battery powered |
| AVI-2401AC-2 | Dimmer with presets - percentages, 120-277VAC |
| AVI-2402BAT-2 | Dimmer with presets - percentages, battery powered |
| AVI-2401AC-3 | On/off/dimming, 120-277VAC |
| AVI-2402BAT-3 | On/off/dimming, battery powered |

| NETWORK | |
|-----------------------|--|
| AVI-RAB-LTE | Remote access bridge – LTE connection |
| AVI-2001RAB-01-C | Remote access bridge – Wifi connection |
| AVI-KIT-NTM | Network time manager with battery backup |
| CEILING MOUNT SENSORS | |
| AVI-KIT-SEN-DUCM | PIR motion and ultrasonic sensor kit |
| AVI-KIT-SEN-ICM | PIR motion and photocell sensor kit |

For load controllers and additional accessory info, see hew.com/avi-on

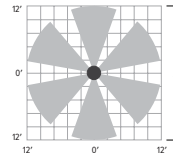
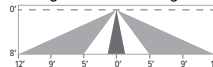
AVI-LVFA-CS2-PIR Avi-on wireless fixture control with PIR motion and daylight sensor. DA Driver only.

| SPECIFICATIONS | |
|-------------------|--------------------------|
| TYPE | PIR Motion + Daylight |
| MOUNTING HEIGHT | 8' – 10' |
| DETECTION ANGLE | 360° |
| TEMPERATURE RANGE | -30° to 50°C |
| RELATIVE HUMIDITY | 10 to 80% non-condensing |
| IP RATING | IP20 |
| MANUFACTURER | Avi-On |
| | |

SENSOR COVERAGE PATTERNS

Side View

8' height: Ø24' coverage



SENSOR DETAIL



Dimensions: 13/16" x 2-1/4"



ATS2^{LED} Architectural Surface – Curved Deep Center

ADDITIONAL CONTROL OPTIONS

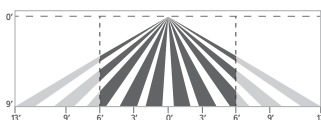
AWNS Lutron Athena wireless node integral fixture control, RF with daylight and occupancy sensing. DA and DSR Drivers only.

| SPECIFICATIONS | |
|-------------------|--|
| TYPE | Radio Frequency |
| MOUNTING HEIGHT | 8' – 12' |
| DETECTION ANGLE | 360° |
| TEMPERATURE RANGE | 0° to 55°C |
| RELATIVE HUMIDITY | 0 to 90%, non-condensing |
| COMMISSIONING | Clear Connect gateway – Type X with app (iOS or Android) |
| MANUFACTURER | Lutron |



SENSOR COVERAGE PATTERNS

9' height: ø12' coverage



Motion Sensor Coverage

| CEILING HEIGHT | COVERAGE AREA (SQ FT) |
|----------------|-----------------------|
| 8' | 114 |
| 9' | 144 |
| 10' | 178 |
| 12' | 256 |

SENSOR DETAIL



Dimensions: ø1-1/8"

ATHENA CONTROL OPTIONS

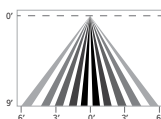
| CATALOG NUMBER | DESCRIPTION |
|----------------|--|
| AWNDR | Lutron Athena wireless node integral fixture control, RF only, for use with D4i DALI-2 or driver with 12V auxiliary power |
| AWNS | Lutron Athena wireless node integral fixture control, RF with daylight and occupancy sensing, for use with D4i DALI-2 or driver with 12V auxiliary power |
| AWNDR-BL | Lutron Athena wireless node integral fixture control, RF only, for use with D4i DALI-2 or driver with 12V auxiliary power, black finish |
| AWNS-BL | Lutron Athena wireless node integral fixture control, RF with daylight and occupancy sensing, for use with D4i DALI-2 or driver with 12V auxiliary power, black finish |

VDO Lutron Vive integral fixture control, RF with daylight and occupancy sensor (DFCSJ-OEM-OCC). DSR or LDE Drivers only. LDE drivers require driver interface

| SPECIFICATIONS | |
|-------------------|--------------------------|
| TYPE | PIR Motion + Daylight |
| MOUNTING HEIGHT | 8' – 12' |
| DETECTION ANGLE | 360° |
| TEMPERATURE RANGE | 0° to 55°C |
| RELATIVE HUMIDITY | 0 to 90%, non-condensing |
| COMMISSIONING | App (iOS or Android) |
| MANUFACTURER | Lutron |

SENSOR COVERAGE PATTERNS

9' height: ø12' coverage



Motion Sensor Coverage

| CEILING HEIGHT | COVERAGE AREA (SQ FT) |
|----------------|-----------------------|
| 8' | 114 |
| 9' | 144 |
| 10' | 178 |
| 12' | 256 |

SENSOR DETAIL



Dimensions: 2-11/16" x 1"

VIVE CONTROL OPTIONS

| CATALOG NUMBER | DESCRIPTION |
|----------------|---|
| VRF | Lutron Vive integral fixture control, RF only (DFCSJ-OEM-RF), for use with sensor-ready driver |
| VDO | Lutron Vive integral fixture control, RF with daylight and occupancy sensor (DFCSJ-OEM-OCC), for use with sensor-ready driver |
| VRF/DBI | Lutron Vive integral fixture control, RF only (DFCSJ-OEM-RF) and digital link interface, for use with Lutron Hi-lume 1% EcoSystem dimming LED driver |
| VDO/DBI | Lutron Vive integral fixture control, RF with daylight and occupancy sensor (DFCSJ-OEM-OCC) and digital link interface, for use with Lutron Hi-lume 1% EcoSystem dimming LED driver |

ADDITIONAL DRIVER OPTIONS

Note: Lumen restrictions apply, consult product builder at hew.com/product-builder.

| CATALOG NUMBER | DESCRIPTION |
|----------------|---|
| DRV | Driver prewired for non-dimming applications |
| DIM | Dimming driver prewired for 0-10V low voltage applications |
| DIM1 | 1% dimming driver prewired for 0-10V low voltage applications |
| DIM LINE | Line voltage dimming driver (TRIAC and ELV compatible, 120V only) |
| DIM TRC | Line voltage dimming driver (TRIAC compatible, 120V only) |
| DA | Driver with 12V auxiliary power |
| DSR | Sensor-ready driver (D4i DALI-2) |
| SD40 | 40% step-dimming driver |
| SD50 | 50% step-dimming driver |
| DALI | DALI dimming driver |
| LDE1 | Lutron Hi-lume 1% EcoSystem dimming LED driver |

