

CATALOG #: _____

TYPE: _____

PROJECT: _____

NEW CONSTRUCTION AND REMODEL

ORDERING EXAMPLE: 8DR - L60/835 - OPTIONS - CONTROL/DIM - 120 - OW - CS - TRIM OPTIONS - N - BA1



HOUSING

SERIES	LUMENS ^[1]	CRI	CCT	OPTIONS	CONTROL	DRIVER	VOLTAGE				
8DR	L20 2,000lm	8 80	27 2700K	See page 3 for EMERGENCY BATTERY OPTIONS.	See page 5 for ADDITIONAL CONTROL/DRIVER OPTIONS.		120 120V				
	L40 4,000lm	9 90 ^[2]	30 3000K				277 277V				
	L60 6,000lm		35 3500K		SCA_ Sloped ceiling adapter ^[3]	– None	DIM Dimming driver, 0-10V	347 347V ^[9]			
	L80 8,000lm		40 4000K						ATH Airtight construction	AVI-LVFA Avi-on wireless fixture control ^[6]	DIM1 1% Dimming driver, 0-10V
			50 5000K						F Fuse		
			CP Chicago plenum (CCEA) ^[4]	AWN Lutron Athena wireless node integral fixture control, RF only ^[7]		DA Driver with 12V auxiliary power, without external dimming wires ^[8]					
			SDT Stepdown transformer ^[5]								
			TC Adjustable mounting arms for 1-1/2" - 2-1/4" thick ceilings								

TRIM [10]

TRIM TYPE	DISTRIBUTION ^[11]	REFLECTOR FINISH	TRIM OPTIONS
O Open reflector	W 65° Wide	CS Clear semi-specular anodize	MWT Textured white trim flange ^[12]
	M 45° Medium	SG Satin-glow anodize	WET/CC Wet location, covered ceiling listed
	N 35° Narrow	GD Gold anodize	AM Anti-microbial ^[13]
		CG Champagne gold anodize	
		PW Pewter anodize	
		SPC Clear specular anodize	
		RG Rose gold anodize	
		WH White texture powder coat	
		BL Black texture powder coat	

MOUNTING

MOUNTING TYPE ^[14]	MOUNTING HARDWARE ^[15]
N Open pan for new construction	F1 Integral 2-position fixed pan bracket, universal bar hanger included ^[18]
I IC-rated enclosure for new construction ^[16]	BA1 Adjustable butterfly pan bracket, bar hanger not included ^[19]
R Remodel kit ^[17]	CA1 Adjustable caterpillar pan bracket, universal bar hanger included ^[20]

NOTES

- ¹ Lumen output based on O trim type, W distribution and CS finish, 3500K/80CRI. Actual lumens may vary +/-5%. See page 2 for **FIXTURE PERFORMANCE DATA**. Higher lumen packages available, consult factory.
 - ² Extended lead times may apply. Consult factory for availability.
 - ³ 14" aperture, specify degrees of slope in 5° increments, 05°-30°. See page 3 for **SLOPED CEILING ADAPTOR DETAILS**. N Mounting Type only. Not available with ATH or WET/CC Options. Painted white. Other colors available, consult factory.
 - ⁴ I Mounting Type required.
 - ⁵ May be required for 347V, see product builder at hew.com/product-builder.
 - ⁶ DA Driver only. See page 5 for **AVI-ON BLUETOOTH WIRELESS CONTROL DETAILS**.
 - ⁷ DA Driver only.
 - ⁸ Avi-on and Lutron Athena Controls only.
 - ⁹ Not available with EM batteries, DA or DMX Drivers.
 - ¹⁰ Trim ships separately.
 - ¹¹ Beam angle based on CS or WH reflector finish. See page 2 for **FIXTURE PERFORMANCE DATA**.
 - ¹² Not available with WH Reflector Finish.
 - ¹³ WH and BL Reflector Finishes only.
 - ¹⁴ Mounting hardware required (N and I only), ordered separately, see **MOUNTING HARDWARE** ordering info. See page 4 for **MOUNTING TYPE DETAILS**.
 - ¹⁵ Additional mounting hardware options available. See page 4 for **MOUNTING HARDWARE DETAILS**.
 - ¹⁶ L20 lumen package max. Not available with EM batteries.
 - ¹⁷ Also used in new construction sheetrock ceilings. Pan-less installation.
 - ¹⁸ N and I Mounting Types only. I Mounting requires external brackets.
 - ¹⁹ N Mounting Type only.
 - ²⁰ N Mounting Type only.

8DR^{LED} 8" Downlight – Round

FEATURES

- High-output illumination for tall ceiling applications
- Beam angles ranging from 35° narrow to 65° wide for tailored performance
- New construction mounting pan, IC-rated, or pan-less remodel kit available
- Open reflector with 9 finishes to complement any interior style
- Fully room-side accessible
- Wireless in-fixture control solutions available



SPECIFICATIONS

- HOUSING** – Die-cast aluminum trim housing with forged aluminum heat sink. Galvanized steel splice compartment with driver mounting plate/enclosure. Swing-out mounting arms field adjust for ceiling thickness from 1/2" – 1-7/16". See Options for additional ceiling thicknesses.
- OPEN REFLECTOR** – Low-iridescent anodized aluminum with 1/2" flange. Clear semi-specular finish standard.
- ELECTRICAL** – High-performance Class 2 C.O.B. LED array. Modular quick-connect plug for easy field-connection of LED light assembly to driver. Reported L70>55,000 hours. Reported L90>55,000 hours. Estimated L70 = 200,000 hours.
- MOUNTING** – Recessed. 20 ga. galvanized steel mounting pan for new construction or IC-rated enclosure. Remodel kit option includes receiver bracket hardware. Minimum 24" O.C. marked spacing required for L60 - L80 lumen packages.
- LISTINGS** –
 - cCSAus conforms to UL STD 1598; Certified to CAN/CSA STD C22.2 No. 250.0 for dry and damp locations. LED light assembly conforms to UL 2108 for remote installation.
 - Suitable for wet location under covered ceiling when specified with WET/CC option.
 - IC-rated for direct contact with insulation when specified with I Mounting Type.
 - City of Chicago Environmental Air approved when specified with CP option.
 - Complies with ASTM-E283 when specified with ATH option.
 - RoHS compliant.
 - Complies with the Buy American Act and other federal regulations. Request certification at hew.com/baa.
- WARRANTY** – 5-year limited warranty, see hew.com/warranty.

FIXTURE PERFORMANCE DATA

	DIST.	DELIVERED LUMENS	WATTAGE	EFFICACY (lm/W)
L20	W	2010	24.3	83
	M	1991	24.3	82
	N	1824	24.3	75
L40	W	4005	46.4	86
	M	3966	46.4	86
	N	3634	46.4	78
L60	W	6000	71.9	83
	M	5943	71.9	83
	N	5444	71.9	76
L80	W	8007	95.1	84
	M	7931	95.1	83
	N	7265	95.1	76

MULTIPLIER TABLES

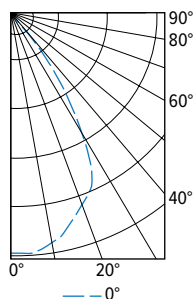
COLOR TEMPERATURE	
CCT	CONVERSION FACTOR
2700K	0.92
3000K	0.98
3500K	1.00
4000K	1.01
5000K	1.02

REFLECTOR FINISH	
CATALOG NUMBER	CONVERSION FACTOR
CS	1.00
SG ¹	0.92
GD	0.93
CG	0.96
PW	0.86
SPC	1.02
RG	0.88
WH ¹	0.89
BL ¹	0.47

- ¹ Distribution will also be affected, consult factory.
- Photometrics tested in accordance with IESNA LM-79. Results shown are based on 25°C ambient temperature.
 - Wattage shown is based on 120V input.
 - Results based on 3500K, 80 CRI, actual lumens may vary +/-5%
 - To calculate lumen output in emergency mode, multiply the battery wattage by the efficacy.
 - Use multiplier tables to calculate additional options.

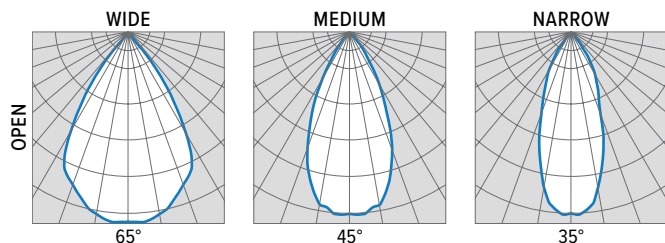
PHOTOMETRY

8DR-L60/835-OW-CS Total Luminaire Output: 6000 lumens; 71.9 Watts | Efficacy: 83 lm/W | 80 CRI; 3500K CCT



CANDLEPOWER DISTRIBUTION	VERTICAL ANGLE	HORIZONTAL ANGLE	ZONAL LUMENS
		0°	
	0	5866	
	5	5903	554
	15	5382	1514
	25	4655	2084
	35	2299	1432
	45	359	330
	55	48	46
	65	24	24
	75	12	12
	85	3	3
	90	0	

LUMEN SUMMARY	ZONE	LUMENS	% FIXTURE
	0 - 40	5585	93
	0 - 60	5960	99
	0 - 90	6000	100
	0 - 180	6000	100



8DR LED

8" Downlight – Round

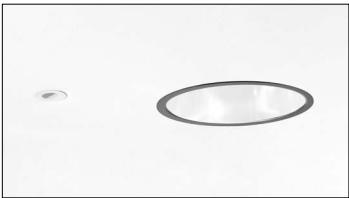
EMERGENCY BATTERY OPTIONS

Additional limitations apply, see page 1. Specify CEC in the option code when California Energy Commission regulations are required.

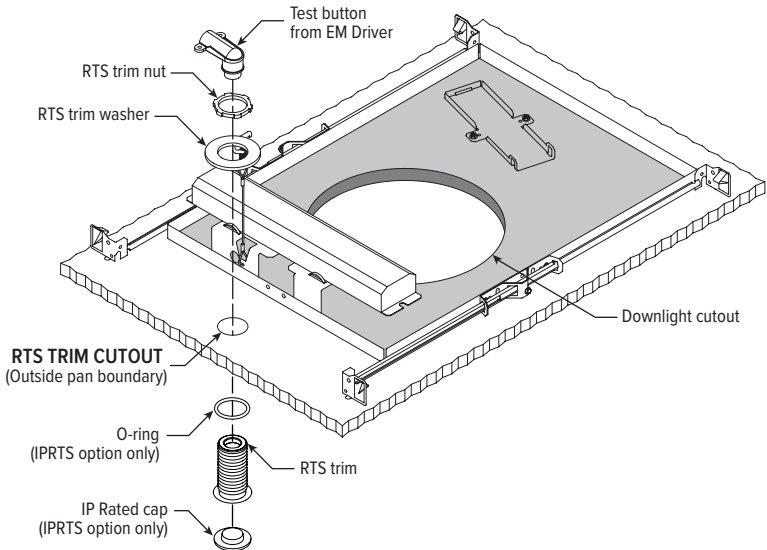
CATALOG NUMBER	DESCRIPTION
EM/7W	7-watt emergency battery
EM/7W/RTS	7-watt emergency battery with regressed test switch ¹
EM/7W/IPRTS	7-watt emergency battery with IP65 rated regressed test switch
EM/10W	10-watt emergency battery
EM/10W/RTS	10-watt emergency battery with regressed test switch ¹
EM/10W/IPRTS	10-watt emergency battery with IP65 rated regressed test switch

¹ Not available with WET/CC Option.

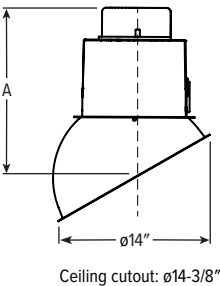
REGRESSED TEST SWITCH DETAILS



Shown Installed



SLOPED CEILING ADAPTOR DETAILS



LUMENS	A (HEIGHT)						PLENUM HEIGHT
	5°	10°	15°	20°	25°	30°	
L20 - L40	13-5/16"	13-3/8"	13-5/16"	13-3/16"	13"	12-5/8"	13-3/4"
L60 - L80	14-3/4"	14-13/16"	14-3/4"	14-5/8"	14-5/16"	14"	15"

30° Shown

REFLECTOR FINISH DETAILS

SPC Clear specular	SG Satin glow	PW Pewter	GD Gold	CG Champagne gold	RG Rose gold	CS Clear semi-specular	WH White	BL Black

APERTURE ADAPTOR ORDERING INFO

ORDERING EXAMPLE: 4DR - GR - 0575 - WHT			
SERIES	CATALOG NUMBER	CEILING CUTOUT	FINISH
4AR 6AR 4DR 6DR 4DS 6DS 4PR 6PR 4PS 6PS 8DR	GR	Specify ceiling cutout in 1/8" increments. Example: 5.75" = 0575 See Kit Components for application limits.	CS Clear semi-specular powder coat WH White texture powder coat BL Black texture powder coat

For use with remodel downlights. Additional finishes available, consult factory.
For limitations and instructions, see hew.com/aperture-adaptor.pdf

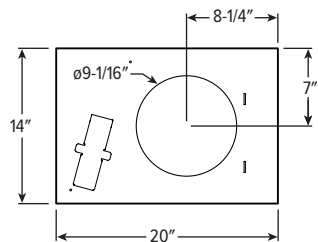


8DR^{LED} 8" Downlight – Round

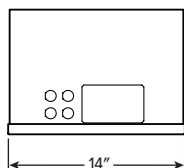
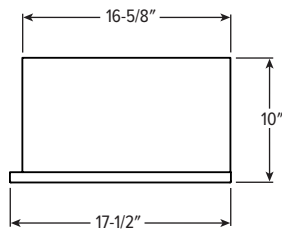
MOUNTING TYPE DETAILS

Ceiling cutout 9-1/16" for all mounting types.

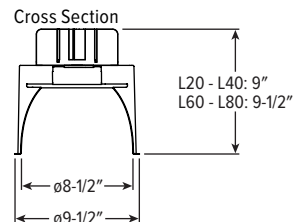
NEW CONSTRUCTION



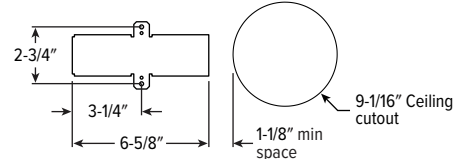
IC-RATED



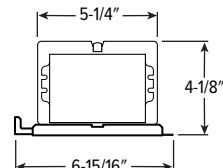
REMODEL



Receiver Bracket

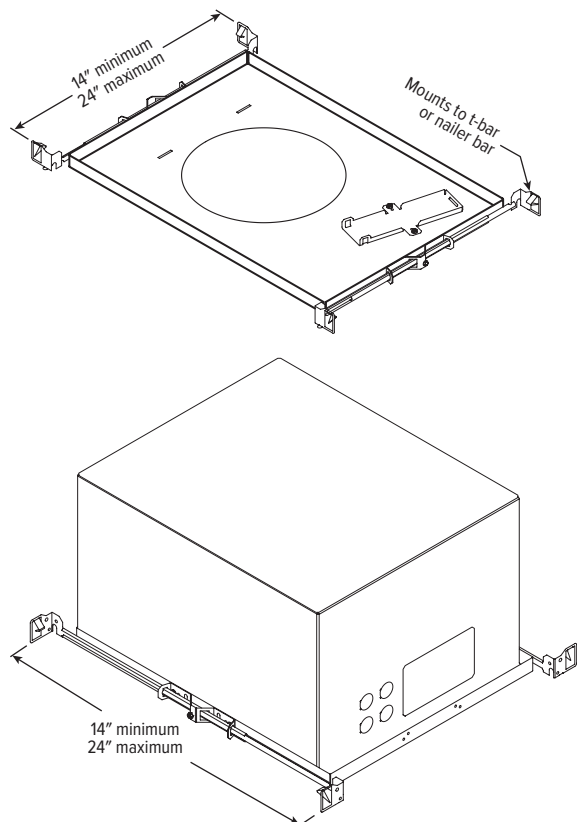


Driver and Junction Box



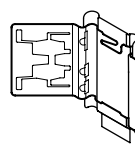
MOUNTING HARDWARE DETAILS

F1 Integral 2-position fixed pan bracket, universal bar hanger included

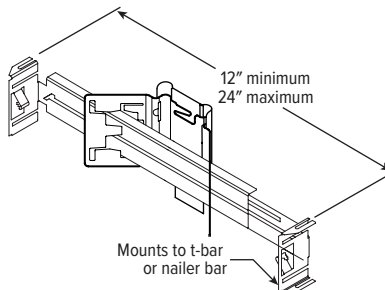


F1 with I Mounting Type

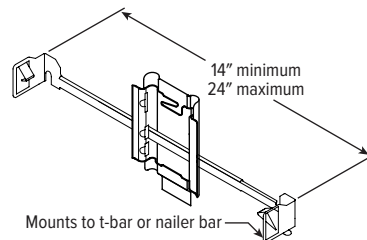
BA1 Adjustable butterfly pan bracket, bar hanger not included (N Mounting Type only)



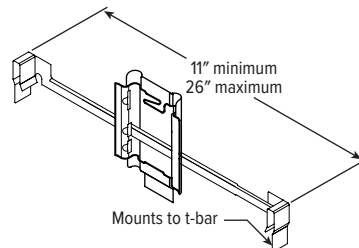
BA2 Adjustable butterfly pan bracket, heavy-duty universal bar hanger included (N Mounting Type only)



CA1 Adjustable caterpillar pan bracket, universal bar hanger included (N Mounting Type only)



CA2 Adjustable caterpillar pan bracket, t-bar hanger included (N Mounting Type only)



H.E. Williams, Inc.

Carthage, Missouri

www.hew.com

417-358-4065

Designed and Manufactured in the USA

REV.08/21/23.LA

Downlights
Page 4 of 5

8DR LED 8" Downlight – Round

AVI-ON BLUETOOTH WIRELESS CONTROL DETAILS

FEATURES

Simple

- Gateway-free distributed control
- Factory pre-commissioning
- Contractor friendly installation
- Occupancy/vacancy/daylight sensing

Scalable

- Virtually unlimited network size
- Spans small offices to large warehouses
- Flexible control strategies

Secure

- Optional cloud connectivity
- UL IoT platinum security rating
- DLC 5.0 compliant

COMMISSIONING & INSTALLATION TOOLS

Avi-on mobile apps provide intuitive, quick installation and commissioning. Pro tools are available to qualified installers. Live commissioning training and on-site or remote support by Avi-on must be ordered separately through Avi-on.



Commissioning Mobile App

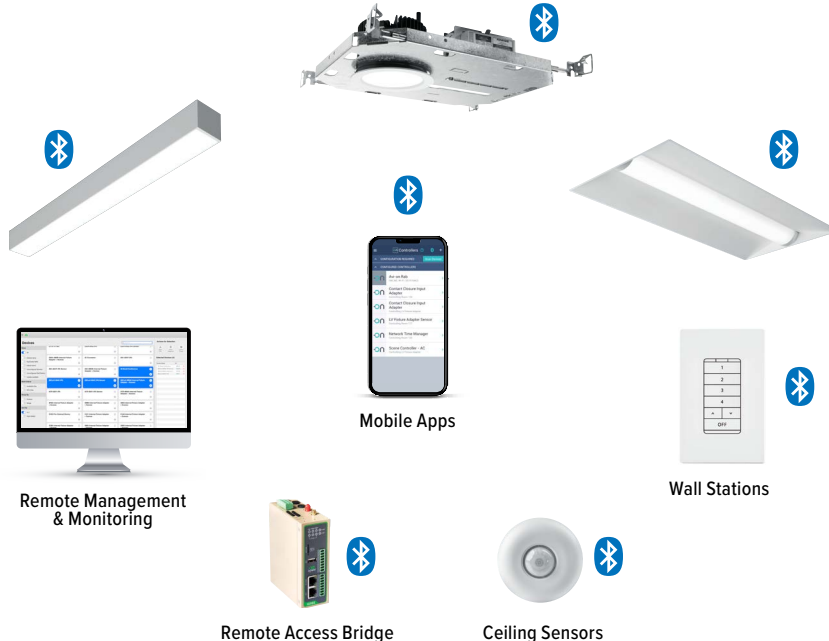


Zone Scanner Web App



Commissioning Pro App

SYSTEM COMPONENTS



The Bluetooth® word mark and logos are registered trademarks owned by Bluetooth SIG, Inc. and any use of such marks by Avi-on is under license. Other trademarks and trade names are those of their respective owners.

ACCESSORIES

WALL STATIONS	
AVI-2401AC	Scene controller - numbered 1-4, 120-277VAC
AVI-2402BAT	Scene controller - numbered 1-4, battery powered
AVI-2401AC-2	Dimmer with presets - percentages, 120-277VAC
AVI-2402BAT-2	Dimmer with presets - percentages, battery powered
AVI-2401AC-3	On/off/dimming, 120-277VAC
AVI-2402BAT-3	On/off/dimming, battery powered

NETWORK	
AVI-RAB-LTE	Remote access bridge – LTE connection
AVI-2001RAB-01-C	Remote access bridge – Wifi connection
AVI-KIT-NTM	Network time manager with battery backup
CEILING MOUNT SENSORS	
AVI-KIT-SEN-DUCM	PIR motion and ultrasonic sensor kit
AVI-KIT-SEN-ICM	PIR motion and photocell sensor kit

For load controllers and additional accessory info, see hew.com/avi-on

ADDITIONAL CONTROL/DRIVER OPTIONS

Lumen restrictions apply: L40 max for DMX driver, L20 max for Lutron drivers, L40 max for DIM LINE and DALI drivers. R mounting type requires top access with DMX controls. R Mounting Type requires 12" minimum plenum depth when specified with VRF/DBI controls. 347V may require stepdown transformer, see product builder at hew.com/product-builder.

CATALOG NUMBER	DESCRIPTION
AVI-LVFA/DA	Avi-on wireless fixture control for use with driver with 12V auxiliary power
VRF/DBI/LDE1	Lutron Vive integral fixture control, RF only (DFCSJ-OEM-RF) and digital link interface, with Lutron Hi-lume 1% EcoSystem dimming LED driver
FCJS/DIM	Lutron Vive PowPak wireless fixture control with dimming driver
FCJS/DIM1	Lutron Vive PowPak wireless fixture control with 1% dimming driver
DIM	Dimming driver prewired for 0-10V low voltage applications
DIM1	1% dimming driver prewired for 0-10V low voltage applications
DIM LINE	Line voltage dimming driver (TRIAC and ELV compatible at 120V only)
DALI	DALI dimming driver
DMX	0.1% dimming driver for DMX controls
LDE1	Lutron Hi-lume 1% EcoSystem dimming LED driver

