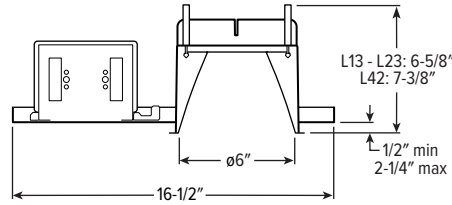


# 6DR tunable WHITE 6" Downlight – Round



CATALOG #: \_\_\_\_\_

TYPE: \_\_\_\_\_

PROJECT: \_\_\_\_\_

## NEW CONSTRUCTION AND REMODEL

ORDERING EXAMPLE: 6DR - TL - L13/8TW - OPTIONS - DIM - UNV - OW - OF - CS - TRIM OPTIONS - N - F1



## HOUSING

SERIES	LUMENS <sup>[1]</sup>	COLOR	OPTIONS	CONTROL	VOLTAGE
6DR-TL	L13 1,300lm	8TW Tunable white (80 CRI, 2700K-5000K)	See page 3 for EMERGENCY BATTERY OPTIONS.	See page 4 for CONTROL DETAILS.	UNV 120-277V
TrimLock	L23 2,300lm				
	L42 4,200lm				
			SCA _ Sloped ceiling adaptor <sup>[2]</sup>	DALI Driver prewired for DALI applications	
			ATH Airtight construction	DIM Dimming driver with (1) 0-10V signal to control dimming and (1) 0-10V signal to control CCT	
			CP Chicago plenum (CCEA) <sup>[3]</sup>	DMX Driver prewired for DMX applications	
			F Fuse kit	PSQ Lutron T-Series 2-channel tunable white 1%. <sup>[4]</sup>	

## TRIM <sup>[5]</sup>

TRIM TYPE	DISTRIBUTION <sup>[6]</sup>	FLANGE TYPE	REFLECTOR FINISH	TRIM OPTIONS
O Open reflector	W Wide	OF 1/2" standard flange	Open trim types	MWT Textured white trim flange <sup>[14]</sup>
L Flush lens	65° Open	SF 1/4" mud-in flange <sup>[12]</sup>	CS Clear semi-specular anodize	IP IP65 rated trim <sup>[15]</sup>
R Regressed lens	55° Flush		SG Satin-glow anodize	AD Diffuse acrylic lens <sup>[16]</sup>
A Angled lens <sup>[7]</sup>	55° Regressed		GD Gold anodize	PD Diffuse 1/8" polycarbonate lens <sup>[17]</sup>
S Non-conductive flush lens for shower applications <sup>[8]</sup>	M Medium <sup>[9]</sup>		CG Champagne gold anodize	TD Diffuse polycarbonate lens media at top of open reflector <sup>[18]</sup>
	35° Open		PW Pewter anodize	WET/CC Wet location, covered ceiling listed <sup>[19]</sup>
	35° Flush		SPC Clear specular anodize	AM Anti-microbial <sup>[20]</sup>
	35° Regressed		RG Rose gold anodize	
	N Narrow <sup>[10]</sup>		WH White texture powder coat	
	10° Open		BL Black texture powder coat	
	25° Flush			
	25° Regressed		Lens trim types	
	WW Wall wash <sup>[11]</sup>		CS Clear semi-specular powder coat	
			WH White texture powder coat	
			BL Black texture powder coat	
			MB Black texture splay with white flange <sup>[13]</sup>	

## MOUNTING

MOUNTING TYPE <sup>[21]</sup>	MOUNTING HARDWARE <sup>[22]</sup>
N Open pan for new construction	F1 Integral 2-position fixed pan bracket, universal bar hanger included <sup>[25]</sup>
I IC-rated enclosure for new construction <sup>[23]</sup>	BA1 Adjustable butterfly pan bracket, bar hanger not included <sup>[26]</sup>
R Remodel kit <sup>[24]</sup>	CA1 Adjustable caterpillar pan bracket, universal bar hanger included <sup>[27]</sup>

## NOTES

- Lumen output based on O trim type, W distribution and CS finish, 4000K/80CRI. Actual lumens may vary +/-5%. See page 2 for FIXTURE PERFORMANCE DATA.
- 11-1/2" aperture, specify degrees of slope in 5° increments, 05°-30°. Not available with I Mounting Type, S Trim Type, ATH, IP, or WET/CC Options. Painted white. Other colors available, consult factory. See page 4 for SLOPED CEILING ADAPTOR DETAILS.
- I Mounting Type required.
- Not available with I Mounting Type.
- Trim ships separately.
- Beam angle based on CS or WH reflector finish.
- Available with WW Distribution only.
- W Distribution, OF Flange Type, WH Reflector Finish only. Standard with AD diffuse acrylic lens. IP and WET/CC options standard.
- Not available with lumen stop L42 when specified with flush or regressed trim types.
- Not available with lumen stop L42 when specified with flush or regressed trim types.
- Not available with WH Reflector Finish, L or S Trim Types.
- O and A Trim Types only.
- For use with mud-in plaster construction only, supplied with mud flange installation kit. See page 4 for FLANGE TYPE DETAILS. Not available with ATH or IP options.
- R Trim Type only.
- Not available with WH Reflector Finish, L or S Trim Types.
- L and R trim types only.
- Not available with O trim type. W and WW distributions only.
- Not available with O trim type. W and WW distributions only.
- O Trim Type only. WET/CC standard unless ordered with EM/RTS.
- Not available with PD trim option.
- WH and BL Reflector Finishes only. Not available with S Trim Type.
- Mounting hardware required (N and I only), ordered separately, see MOUNTING HARDWARE ordering info. See page 5 for MOUNTING TYPE DETAILS.
- Additional mounting hardware options available. SEE PAGE 5 FOR MOUNTING HARDWARE DETAILS.
- L13 and L23 lumen packages only. Not available with EM batteries.
- Also used in new construction sheetrock ceilings. Pan-less installation.
- N and I Mounting Types only. I Mounting requires external brackets.
- N Mounting Type only.
- N Mounting Type only.



# 6DR tunable WHITE 6" Downlight – Round

## FEATURES

### TrimLock®

- Innovative TrimLock reflector retention system ensures trim remains flush with ceiling plane
- Support human-centric design with adaptive, individualized lighting using tunable white light
- New construction mounting pan, IC-rated, or pan-less remodel kit available
- Optional non-conductive lens for shower applications
- Contemporary design provides glare-free illumination for a soft ceiling appearance
- Die-cast trim includes flush, regressed or angled lens
- Open reflector with nine finishes complements any interior style
- Sloped adapter accommodates vaulted ceilings
- IP65-rated die-cast trim includes easy-to-clean flush lens
- Easily adjust mounting arms below ceiling to adapt to a range of ceiling thicknesses

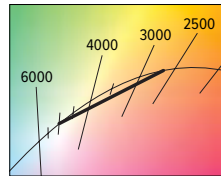
## SPECIFICATIONS

- HOUSING** – Die-cast aluminum trim housing with forged aluminum heat sink. Galvanized steel splice compartment with driver mounting plate/enclosure. Swing-out mounting arms field adjust for ceiling thickness from 1/2" – 2-1/4".
- TRIMLOCK** – Innovative TrimLock reflector retention system ensures the trim remains flush with the ceiling plane.
- OPEN REFLECTOR** – Low-iridescent anodized aluminum. Clear semi-specular finish standard.
- LENSED TRIM** – Die-cast aluminum frame with micro-prismatic, acrylic lens.
- ELECTRICAL** – High-performance Class 2 LED array. Modular quick-connect plug for easy field-connection of LED light assembly to driver. Reported L70>50,000 hours. Tunable White products use LEDs of multiple CCTs and may produce a perceptibly different shade of white from single-CCT products at the same CCT. All CCTs are within 3 MacAdam ellipses.
- MOUNTING** – Recessed. 20 ga. galvanized steel mounting pan for new construction or IC-rated enclosure. Remodel kit option includes receiver bracket hardware. Minimum 24" O.C. marked spacing required for L42 lumen package.
- LISTINGS** –
  - cCSAus conforms to UL STD 1598; Certified to CAN/CSA STD C22.2 No. 250.0 for dry and damp locations. LED light assembly conforms to UL 2108 for remote installation.
  - Suitable for wet location under covered ceiling when specified with WET/CC or TD options.
  - IC-rated for direct contact with insulation when specified with I Mounting Type.
  - City of Chicago Environmental Air approved when specified with CP option.
  - Complies with ASTM-E283 when specified with ATH option.
  - RoHS compliant.
- WARRANTY** – 5-year limited warranty, see [hew.com/warranty](http://hew.com/warranty).

## FIXTURE PERFORMANCE DATA

	DISTRIBUTION	WATTAGE	OPEN REFLECTOR TRIM TYPE		FLUSH LENS TRIM TYPE		REGRESSED LENS TRIM TYPE	
			DELIVERED LUMENS	EFFICACY (lm/W)	DELIVERED LUMENS	EFFICACY (lm/W)	DELIVERED LUMENS	EFFICACY (lm/W)
L13	W	14.6	1320	90	1135	78	1098	75
	M	14.6	1317	90	1220	84	1183	81
	N	14.6	1345	92	1231	84	1199	82
L23	W	24.0	2357	98	1964	82	1900	79
	M	24.0	2285	95	2117	88	2059	86
	N	24.0	2187	91	2129	89	2075	87
L42	W	44.9	4304	96	3596	80	3480	78
	M	44.9	4173	93	–	–	–	–
	N	44.9	3994	89	–	–	–	–

- Distribution will also be affected, consult factory.
  - Use multiplier when specified with O Trim Type.
- Photometrics tested in accordance with IESNA LM-79. Results shown are based on 25°C ambient temperature.
  - Wattage shown is based on 120V input.
  - Results based on 4000K, 80 CRI, actual lumens may vary +/-5%
  - To calculate lumen output in emergency mode, multiply the battery wattage by the efficacy.
  - Use multiplier tables to calculate additional options.



### BEAM ANGLE

	TRIM TYPE		
	OPEN	FLUSH	REGRESSED
W	65°	55°	55°
M	35°	35°	35°
N	10°	25°	25°

## MULTIPLIER TABLES

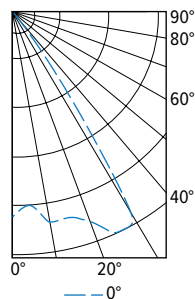
COLOR TEMPERATURE		
CCT	LUMENS	WATTS
2700K	0.83	1.03
3000K	1.00	1.00
3500K	0.99	0.99
4000K	1.00	1.00
5000K	0.98	1.03

TRIM	
CATALOG NUMBER	CONVERSION FACTOR
S	0.85
AD	0.85
PD	0.85
TD	0.75
WET/CC <sup>2</sup>	0.85

	REFLECTOR FINISH	
	CATALOG NUMBER	CONVERSION FACTOR
O TRIM	CS	1.00
	SG <sup>1</sup>	0.92
	GD	0.93
	CG	0.96
	PW	0.86
	SPC	1.02
R TRIM	RG	0.88
	WH <sup>1</sup>	0.89
	BL <sup>1</sup>	0.47
	WH	1.00
	CS	0.98
	BL	0.79

## PHOTOMETRY

6DR-TL-L13/8TW-DIM-UNV-OW-OF-CS Total Luminaire Output: 1320 lumens; 14.6 Watts | Efficacy: 90.4 lm/W | 80.0 CRI; 4037K CCT

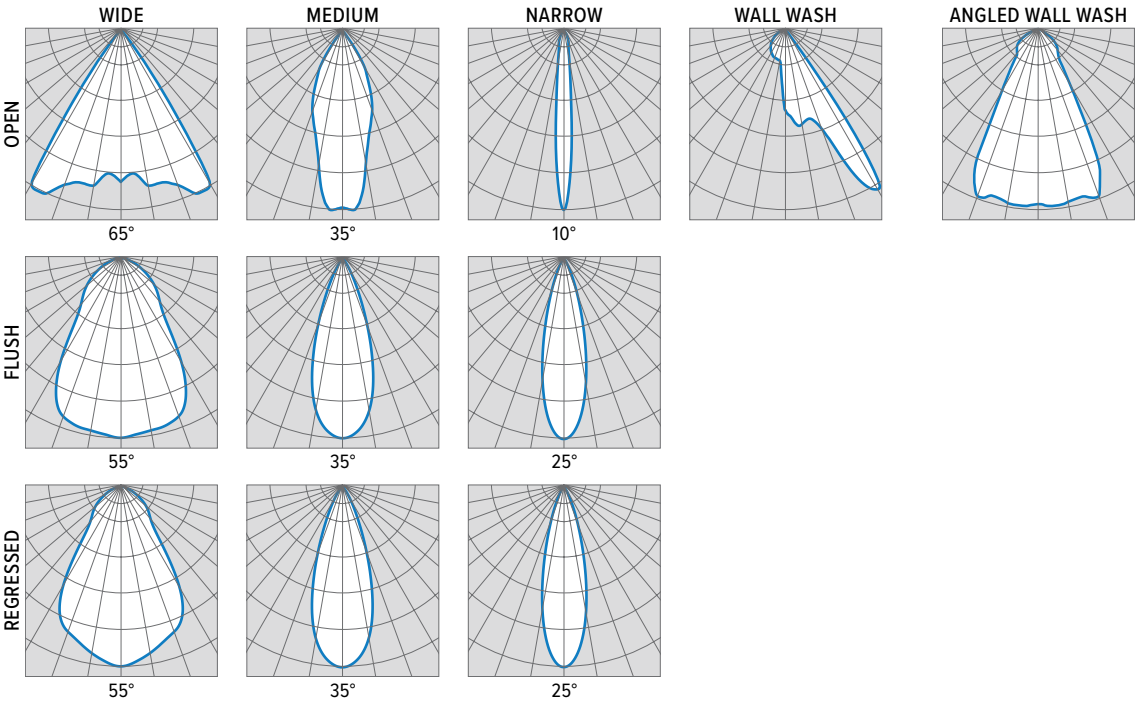


CANDLEPOWER DISTRIBUTION	VERTICAL ANGLE	HORIZONTAL ANGLE	ZONAL LUMENS
		0°	
	0	1110	
	5	1049	100
	15	1152	327
	25	1316	609
	35	401	252
	45	31	24
	55	9	8
	65	1	1
75	0	0	
85	0	0	
90	0		

	LUMEN SUMMARY		
	ZONE	LUMENS	% FIXTURE
LUMEN SUMMARY	0 - 40	1288	98
	0 - 60	1320	100
	0 - 90	1320	100
	0 - 180	1320	100



# 6DR tunable WHITE 6" Downlight – Round



## EMERGENCY BATTERY OPTIONS

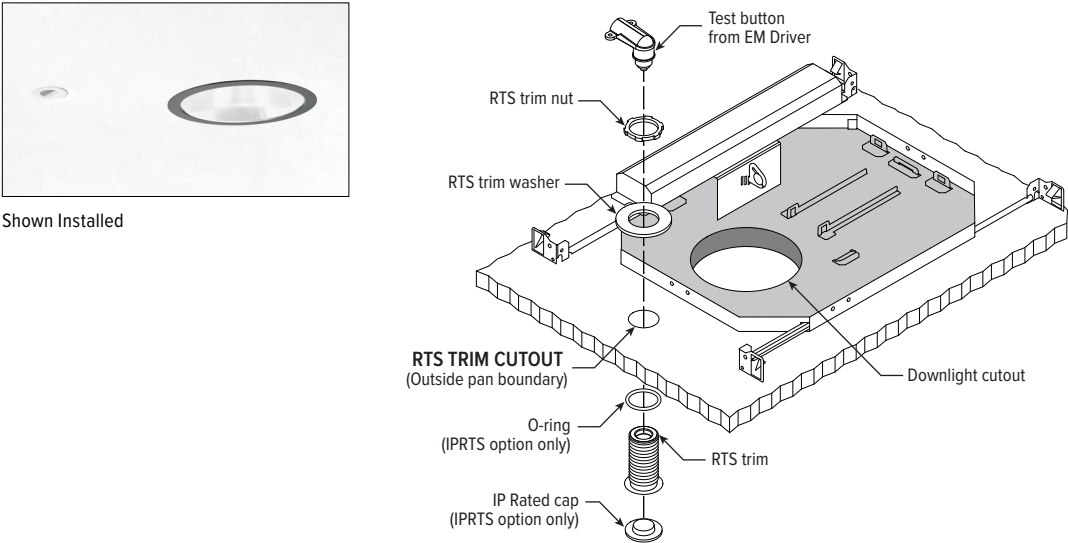
Additional limitations apply, see page 1. Specify CEC in the option code when California Energy Commission regulations are required.

CATALOG NUMBER	DESCRIPTION
EM/7W	7-watt emergency battery <sup>[1]</sup>
EM/7W/RTS	7-watt emergency battery with regressed test switch <sup>[2]</sup>
EM/7W/IPRTS	7-watt emergency battery with IP65 rated regressed test switch
EM/10W	10-watt emergency battery <sup>[1]</sup>
EM/10W/RTS	10-watt emergency battery with regressed test switch <sup>[2]</sup>
EM/10W/IPRTS	10-watt emergency battery with IP65 rated regressed test switch

<sup>1</sup> Not available with S Trim Type or IP Option.

<sup>2</sup> Not available with S Trim Type, IP or WET/CC Options.

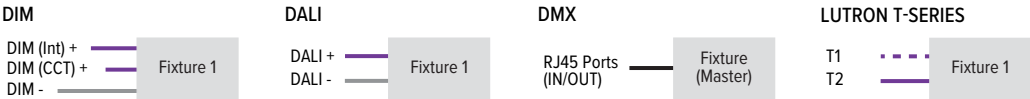
## REGRESSED TEST SWITCH DETAILS



# 6DR tunable WHITE

## 6" Downlight – Round

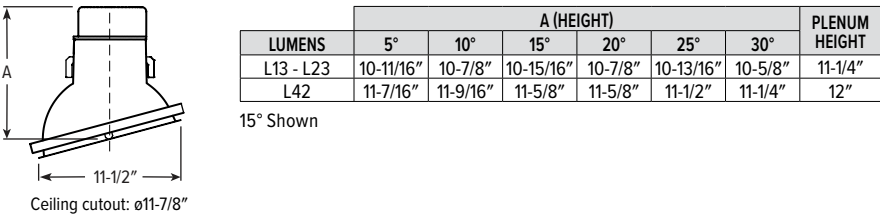
### CONTROL DETAILS



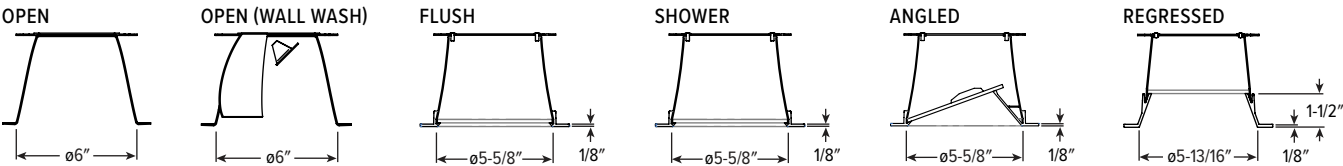
### TRIMLOCK DETAILS



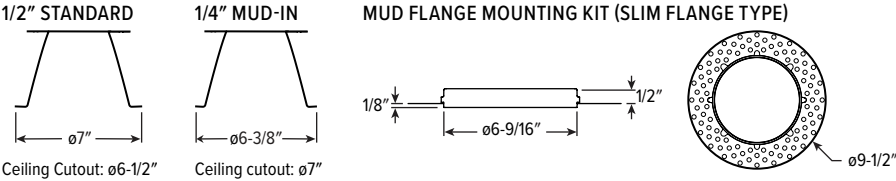
### SLOPED CEILING ADAPTOR DETAILS



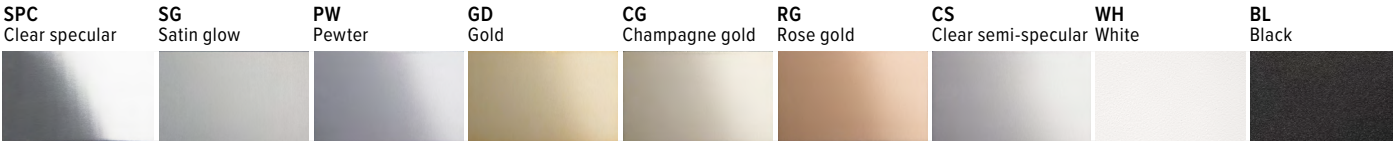
### TRIM TYPE DETAILS



### FLANGE TYPE DETAILS



### REFLECTOR FINISH DETAILS



### APERTURE ADAPTOR ORDERING INFO

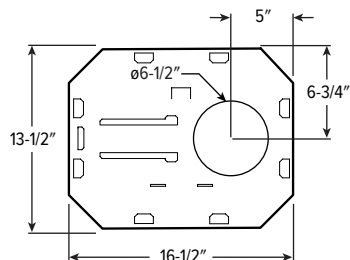
ORDERING EXAMPLE: 4DR - GR - 0575 - WHT			
SERIES	CATALOG NUMBER	CEILING CUTOUT	FINISH
4AR 6AR 4DR 6DR 4DS 6DS 4PR 6PR 4PS 6PS 8DR	GR	Specify ceiling cutout in 1/8" increments. Example: 5.75" = 0575  See Kit Components for application limits.	CS Clear semi-specular powder coat WH White texture powder coat BL Black texture powder coat

For use with remodel downlights. Additional finishes available, consult factory.  
For limitations and instructions, see [hew.com/aperture-adaptor.pdf](http://hew.com/aperture-adaptor.pdf)

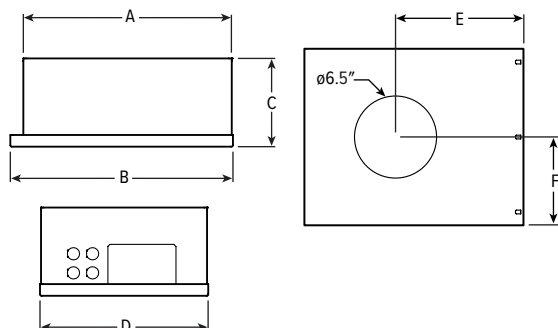
# 6DR tunable **WHITE** 6" Downlight – Round

## MOUNTING TYPE DETAILS

### NEW CONSTRUCTION

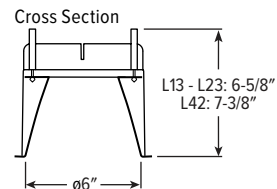


### IC-RATED

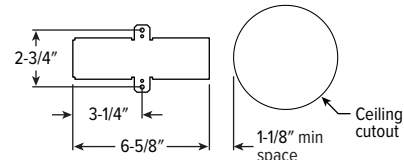


LUMENS	LENGTH					
	A	B	C	D	E	F
L13	15-3/16"	16"	6-3/8"	12-1/8"	9-1/2"	6-1/16"
L23	16-5/8"	17-1/2"	7-7/8"	14"	10-1/4"	7"

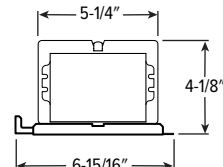
### REMODEL



### Receiver Bracket

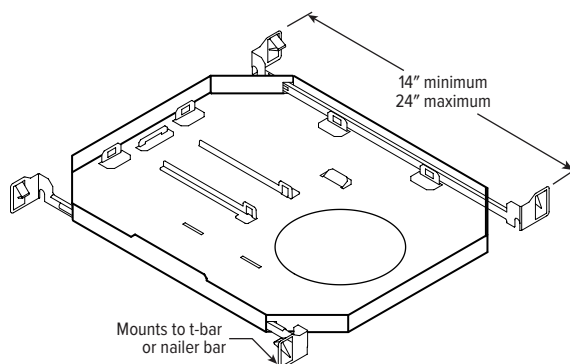


### Driver and Junction Box

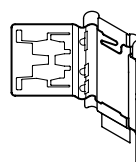


## MOUNTING HARDWARE DETAILS

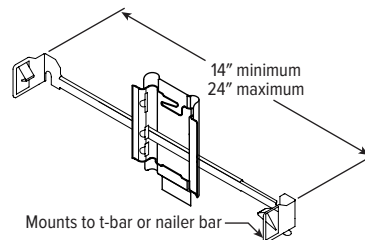
### F1 Integral 2-position fixed pan bracket, universal bar hanger included



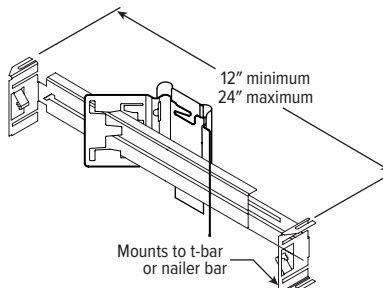
### BA1 Adjustable butterfly pan bracket, bar hanger not included (N Mounting Type only)



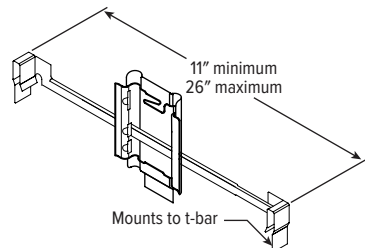
### CA1 Adjustable caterpillar pan bracket, universal bar hanger included (N Mounting Type only)



### BA2 Adjustable butterfly pan bracket, heavy-duty universal bar hanger included (N Mounting Type only)



### CA2 Adjustable caterpillar pan bracket, t-bar hanger included (N Mounting Type only)



### F1 with I Mounting Type

