

CATALOG #: _____

TYPE: _____

PROJECT: _____

FEATURES

TrimLock® TwistLock™



- Deliver scalable, data-driven smart buildings with PoE-enabled fixtures and controls
- Wide range of lumen options for general illumination
- Superior optical control with beams as narrow as 10° and field changeable optics as wide as 65°

SPECIFICATIONS

- HOUSING** – Extruded aluminum with die-cast aluminum accent ring.
- FINISH** – Polyester powder coat bonded to phosphate-free, multi-stage pretreated metal. All parts painted after fabrication to facilitate installation, increase efficiency, and inhibit corrosion.
- TRIMLOCK** – Innovative TrimLock® reflector retention system ensures trim remains secure.
- OPEN REFLECTOR** – Low-iridescent anodized aluminum. Clear semi-specular finish standard.
- LENSED TRIM** – Die-cast aluminum frame with micro-prismatic, acrylic lens.
- ELECTRICAL** – High-performance Class 2 LED array. Modular quick-connect plug for easy field-connection of LED light assembly to driver. Reported L70>50,000 hours. Low-voltage DC fixture, to be fed by Class 2 power supply. Tunable White products use LEDs of multiple CCTs and may produce a perceptibly different shade of white from single-CCT products at the same CCT. All CCTs are within 3 MacAdam ellipses.
- MOUNTING** – Surface, cable, pendant, or wall mount. Indoor applications only. Max weight 9-1/2 lbs.
- LISTINGS** –
 - cCSAus conforms to UL STD 1598 and UL STD 8750. Certified to CAN/CSA STD C22.2 No. 250.0. Suitable for dry and damp locations.
 - Complies with the Buy American Act and other federal regulations. Request certification at hew.com/baa.
- WARRANTY** – 5-year limited warranty, see hew.com/warranty.

SYSTEM REQUIREMENTS

- PoE-ready luminaires are connected to building power systems through network integration and require other components for complete PoE lighting system
- For additional PoE info, see hew.com/poe

ORDERING EXAMPLE: 6CR - TL - P28/835 - WHT - POE PR - OW - CS - TRIM OPTIONS - CM

HOUSING

SERIES	LUMENS ^[1]	CRI	CCT	HOUSING FINISH ^[2]	CONTROL ^[3]
6CR - TL	P15 1,500lm	8 80	27 2700K	ALUM Silver sparkle aluminum	POE PR Power over Ethernet-ready
TrimLock	P28 2,800lm	9 90 ^[4]	30 3000K	BLK Textured black	
	P44 4,400lm		35 3500K	BRZ Textured bronze	
	P62 6,200lm		40 4000K	NKL Textured nickel	
			50 5000K	SLV Textured silver	
			TW Tunable white (80 CRI, 2700K–5000K)	WHT Textured white	

TRIM

TRIM TYPE	DISTRIBUTION ^[5]	REFLECTOR FINISH ^[6]	TRIM OPTIONS
O Open reflector	W 65° Wide	Open Trim Types	AD Diffuse acrylic lens ^[11]
L Flush lens ^[7]	M 45° Medium ^[9]	CS Clear semi-specular anodize	PD Diffuse 1/8" polycarbonate lens ^[12]
R Regressed lens ^[8]	N 10° Narrow ^[10]	SG Satin-glow anodize	TD Diffuse polycarbonate lens media at top of open reflector ^[13]
		GD Gold anodize	
		CG Champagne gold anodize	
		PW Pewter anodize	
		SPC Clear specular anodize	
		RG Rose gold anodize	
		WH White texture powder coat	
		BL Black texture powder coat	
		Lens Trim Types	
		CS Clear semi-specular powder coat	
		WH White texture powder coat	
		BL Black texture powder coat	
		BZ Bronze texture powder coat	
		NK Nickel texture powder coat	
		SV Silver texture powder coat	
		AL Silver sparkle aluminum	

MOUNTING

MOUNTING TYPE ^[14]

- CM__ Adjustable aircraft cable mount, 24", 48", 96", or 144" only, must specify. Example: 24" cable = CM24 ^[15]
- PM__ Pendant mount. Example: 24" pendant = PM24 ^[16]
- SM TwistLock surface mount to octagonal J-box
- WM Wall mount

NOTES

- Lumen output based on O trim type, W distribution and CS finish, 80 CRI, 3500K for single CCT and 4000K for TW. Actual lumens may vary +/-5%, see page 2 for FIXTURE PERFORMANCE DATA
- See page 4 for HOUSING FINISH DETAILS.
- For additional PoE connection details, consult factory.
- Extended lead times may apply. Consult factory for availability. Not available with Tunable White.
- Beam angle based on O Trim Type and CS reflector finish. Trim Type affects beam angle. See page 2 for FIXTURE PERFORMANCE DATA.
- See page 4 for REFLECTOR FINISH DETAILS.
- Not available with P62 lumen package.
- Not available with P44 lumen package when specified with L or R Trim Types.
- Not available with P44 lumen package when specified with L or R Trim Types.
- Not available with O trim type. W distribution only.
- Not available with O trim type. W distribution only.
- O Trim Type only. Not available with P62 lumen package.
- See page 4 for MOUNTING DETAILS.
- Canopy painted white unless specified otherwise.
- Specify length in 1" increments, minimum 6". Canopy and pendant match fixture housing color unless specified otherwise.



FIXTURE PERFORMANCE DATA

STATIC WHITE

	DIST.	WATTAGE	OPEN REFLECTOR		FLUSH LENS		REGRESSED LENS	
			DELIVERED LUMENS	EFFICACY (lm/W)	DELIVERED LUMENS	EFFICACY (lm/W)	DELIVERED LUMENS	EFFICACY (lm/W)
P15	W	12.3	1537	125	1196	97	1208	98
	M	12.3	1480	120	1356	110	1361	111
	N	12.3	1426	116	1365	111	1372	112
P28	W	25.0	2835	113	2196	88	2219	89
	M	25.0	2719	109	2491	100	2499	100
	N	25.0	2619	105	2507	100	2520	101
P44	W	37.5	4408	118	3430	91	3466	92
	M	37.5	4234	113	—	—	—	—
	N	37.5	4039	108	—	—	—	—
P62	W	50.0	6151	123	—	—	—	—
	M	50.0	5822	116	—	—	—	—
	N	50.0	5612	112	—	—	—	—

TUNABLE WHITE

	DIST.	WATTAGE	OPEN REFLECTOR		FLUSH LENS		REGRESSED LENS	
			DELIVERED LUMENS	EFFICACY (lm/W)	DELIVERED LUMENS	EFFICACY (lm/W)	DELIVERED LUMENS	EFFICACY (lm/W)
P15	W	12.3	1311	107	1020	83	1031	84
	M	12.3	1263	103	1157	94	1161	94
	N	12.3	1216	99	1164	95	1170	95
P28	W	25.0	2649	106	2061	82	2083	83
	M	25.0	2544	102	2337	93	2345	94
	N	25.0	2427	97	2353	94	2364	95
P44	W	37.5	3473	93	2664	71	2691	72
	M	37.5	3367	90	—	—	—	—
	N	37.5	3222	86	—	—	—	—
P62	W	43.5	4028	93	—	—	—	—
	M	43.5	3905	90	—	—	—	—
	N	43.5	3738	86	—	—	—	—

MULTIPLIER TABLES

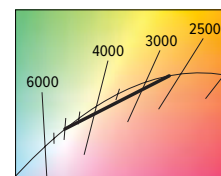
	COLOR TEMPERATURE		
	CCT	LUMENS	
		STANDARD	TUNABLE WHITE
80 CRI	2700K	0.92	0.83
	3000K	0.98	1.00
	3500K	1.00	0.99
	4000K	1.01	1.00
	5000K	1.02	0.98
90 CRI	2700K	0.76	—
	3000K	0.79	—
	3500K	0.82	—
	4000K	0.84	—
	5000K	0.88	—

	REFLECTOR FINISH	
	CATALOG NUMBER	CONVERSION FACTOR
O TRIM	CS	1.00
	SG ⁽¹⁾	0.92
	GD	0.93
	CG	0.96
	PW	0.86
	SPC	1.02
	RG	0.88
	WH ⁽¹⁾	0.89
	BL ⁽¹⁾	0.47
	AL ⁽¹⁾	0.47
R TRIM	WH	1.00
	CS ⁽¹⁾	0.98
	BL ⁽¹⁾	0.79
	BZ ⁽¹⁾	0.76
	NK ⁽¹⁾	0.81
	SV ⁽¹⁾	0.81
	AL ⁽¹⁾	0.86

TRIM OPTIONS	
CATALOG NUMBER	CONVERSION FACTOR
AD	0.85
PD	0.85
TD	0.75

BEAM ANGLE

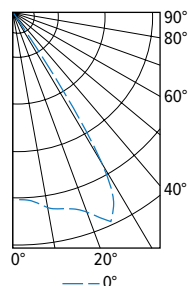
	TRIM TYPE		
	OPEN	FLUSH	REGRESSED
W	65°	50°	50°
M	45°	35°	30°
N	10°	25°	25°



- Distribution will also be affected, consult factory.
- Photometrics tested in accordance with IESNA LM-79. Results shown are based on 25°C ambient temperature.
- Standard results based on 3500K/80 CRI, actual lumens may vary +/-5%
- Tunable white results based on 4000K/80 CRI, actual lumens may vary +/-5%
- Wattage and efficacy data shown do not account for node losses.
- Use multiplier tables to calculate additional options.

PHOTOMETRY

6CR-TL-P28/835-POE PR-OW-CS Total Luminaire Output: 2835 lumens; 25.0 Watts | Efficacy: 113.4 lm/W | 80 CRI; 3500K CCT



	VERTICAL ANGLE	HORIZONTAL ANGLE	ZONAL LUMENS
		0°	
CANDLEPOWER DISTRIBUTION	0	2559	
	5	2636	252
	15	2771	786
	25	3155	1460
	35	434	273
	45	62	47
	55	16	14
	65	1	2
	75	0	0
	85	0	0
	90	0	

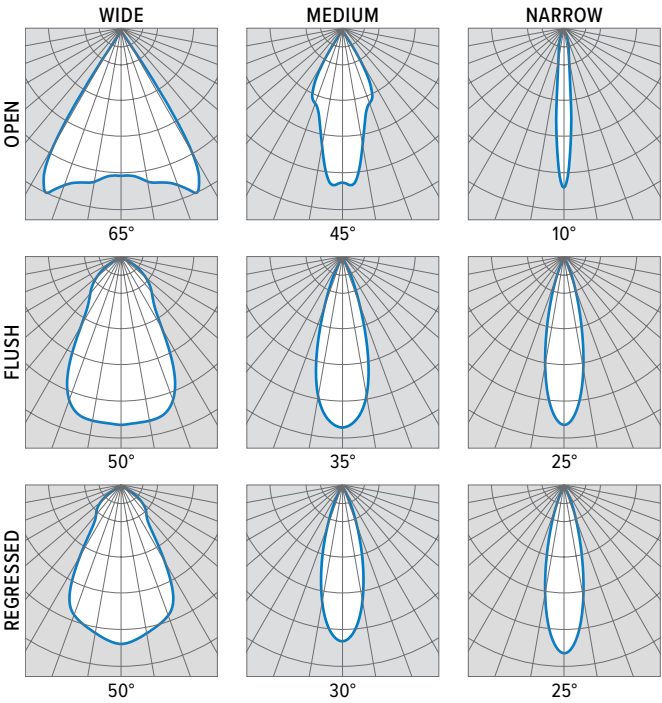
	ZONE	LUMENS	% FIXTURE
LUMEN SUMMARY	0 - 40	2770	98
	0 - 60	2834	100
	0 - 90	2835	100
	0-180	2835	100



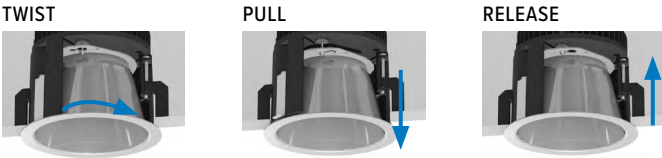
6CR

PoE | tunable WHITE

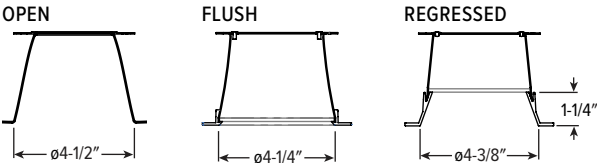
6.5" Cylinder – Round



TRIMLOCK DETAILS



TRIM TYPE DETAILS



6CR PoE | tunable WHITE

6.5" Cylinder – Round

MOUNTING DETAILS

PENDANT MOUNT (PM__)



Swivel pendant mount fixtures are provided with:

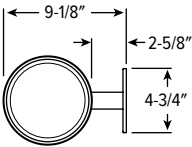
- 45° Swivel canopy
- 3/8" IPS Threaded stem
- Specify length of stem, 6" minimum, 24" default length

WALL MOUNT (WM)

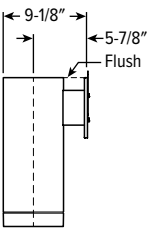


Mounts to 4" square J-box.

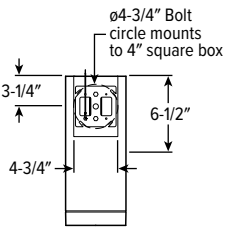
TOP VIEW



SIDE VIEW



BACK VIEW



SURFACE MOUNT (SM)



TwistLock™

Simple lift-and-twist mounting secures fixture to J-box.

CABLE MOUNT (CM__)

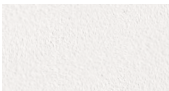


Cable mount fixtures are provided with:

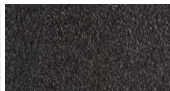
- Adjustable length aircraft cable, must specify length in 24", 48", 96", or 144" inches.
- One 5" canopy
- T-bar clip with 1/4-20 stud
- Hard ceiling anchor provided by others

HOUSING FINISH DETAILS

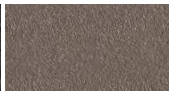
WHITE



BLACK



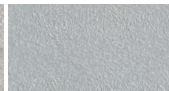
BRONZE



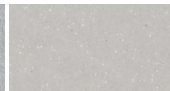
NICKEL



SILVER



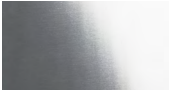
ALUM



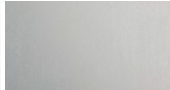
For custom color, please specify RAL code or a manufacturer code with description. All custom colors other than RAL require two sample swatches, minimum 1" square.

REFLECTOR FINISH DETAILS

Smooth Finish
SPC



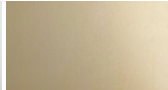
SG



PW



GD



CG



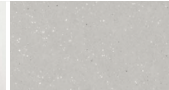
RG



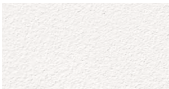
CS



AL



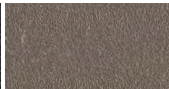
Textured Finish
WH



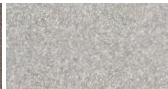
BL



BZ



NK



SV

