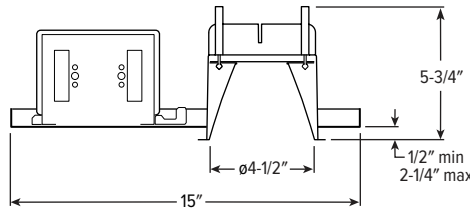


# 4DR tunable WHITE 4.5" Downlight – Round



CATALOG #: \_\_\_\_\_

TYPE: \_\_\_\_\_

PROJECT: \_\_\_\_\_

## NEW CONSTRUCTION AND REMODEL

ORDERING EXAMPLE: 4DR - TL - L13/8TW - OPTIONS - DIM - UNV - OW - OF - CS - TRIM OPTIONS - N - F1



## HOUSING

SERIES	LUMENS <sup>[1]</sup>	COLOR	OPTIONS	CONTROL	VOLTAGE
4DR-TL	L13 1,300lm	8TW Tunable white (80 CRI, 2700K-5000K)	See page 3 for EMERGENCY BATTERY OPTIONS.	See page 4 for CONTROL DETAILS.	UNV 120-277V
TrimLock	L22 2,200lm		SCA_ Sloped ceiling adaptor <sup>[2]</sup> ATH Airtight construction F Fuse kit CP Chicago plenum (CCEA) <sup>[3]</sup>	DALI Driver prewired for DALI applications DIM Dimming driver with (1) 0-10V signal to control dimming and (1) 0-10V signal to control CCT DMX Driver prewired for DMX applications PSQ Lutron T-Series 2-channel tunable white 1%. <sup>[4]</sup>	

## TRIM <sup>[5]</sup>

TRIM TYPE	DISTRIBUTION <sup>[6]</sup>	FLANGE TYPE	REFLECTOR FINISH	TRIM OPTIONS
O Open reflector	W Wide	OF 1/2" standard flange	Open trim types	MWT Textured white trim flange <sup>[12]</sup>
L Flush lens	65° Open	SF 1/4" mud-in flange <sup>[10]</sup>	CS Clear semi-specular anodize	IP IP65 rated trim <sup>[13]</sup>
R Regressed lens	50° Flush		SG Satin-glow anodize	AD Diffuse acrylic lens <sup>[14]</sup>
A Angled lens <sup>[7]</sup>	50° Regressed		GD Gold anodize	PD Diffuse 1/8" polycarbonate lens <sup>[15]</sup>
S Non-conductive flush lens for shower applications <sup>[8]</sup>	M Medium		CG Champagne gold anodize	TD Diffuse polycarbonate lens media at top of open reflector <sup>[16]</sup>
	45° Open		PW Pewter anodize	WET/CC Wet location, covered ceiling listed <sup>[17]</sup>
	35° Flush		SPC Clear specular anodize	AM Anti-microbial <sup>[18]</sup>
	30° Regressed		RG Rose gold anodize	
	N Narrow		WH White texture powder coat	
	10° Open		BL Black texture powder coat	
	25° Flush			
	25° Regressed		Lens trim types	
	WW Wall wash <sup>[9]</sup>		CS Clear semi-specular powder coat	
			WH White texture powder coat	
			BL Black texture powder coat	
			MB Black texture splay with white flange <sup>[11]</sup>	

## MOUNTING

MOUNTING TYPE <sup>[19]</sup>	MOUNTING HARDWARE <sup>[20]</sup>
N Open pan for new construction	F1 Integral 2-position fixed pan bracket, universal bar hanger included <sup>[23]</sup>
I IC-rated enclosure for new construction <sup>[21]</sup>	BA1 Adjustable butterfly pan bracket, bar hanger not included <sup>[24]</sup>
R Remodel kit <sup>[22]</sup>	CA1 Adjustable caterpillar pan bracket, universal bar hanger included <sup>[25]</sup>

## NOTES

- <sup>1</sup> Lumen output based on O trim type, W distribution and CS finish, 4000K/80CRI. Actual lumens may vary +/-5%, see page 2 for FIXTURE PERFORMANCE DATA.
- <sup>2</sup> 9" aperture, specify degrees of slope in 5° increments, 05°-30°. Not available with I Mounting Type, S Trim Type, ATH, IP, or WET/CC Options. Painted white. Other colors available, consult factory. See page 4 for SLOPED CEILING ADAPTOR DETAILS.
- <sup>3</sup> I Mounting Type required.
- <sup>4</sup> Not available with I Mounting Type.
- <sup>5</sup> Trim ships separately.
- <sup>6</sup> Beam angle based on CS or WH reflector finish.
- <sup>7</sup> Available with WW Distribution only.
- <sup>8</sup> W Distribution, OF Flange Type, WH Reflector Finish only. Standard with AD diffuse acrylic lens. IP and WET/CC options standard.
- <sup>9</sup> O and A Trim Types only.
- <sup>10</sup> For use with mud-in plaster construction only, supplied with mud flange installation kit. See page 4 for FLANGE TYPE DETAILS. Not available with ATH or IP options.
- <sup>11</sup> R Trim Type only. Not available with MWT.
- <sup>12</sup> Not available with WH Reflector Finish, L or S Trim Types.
- <sup>13</sup> L and R Trim Types only.
- <sup>14</sup> Not available with O trim type. W and WW distributions only.
- <sup>15</sup> Not available with O trim type. W and WW distributions only.
- <sup>16</sup> O Trim Type only. WET/CC standard unless ordered with EM/RTS.
- <sup>17</sup> Not available with PD trim option.
- <sup>18</sup> WH and BL Reflector Finishes only. Not available with S Trim Type.
- <sup>19</sup> Mounting hardware required (N and I only), ordered separately, see MOUNTING HARDWARE ordering info. See page 5 for
- <sup>20</sup> Additional mounting hardware options available. See page 5 for MOUNTING TYPE DETAILS.
- <sup>21</sup> Not available with EM batteries.
- <sup>22</sup> Also used in new construction sheetrock ceilings. Pan-less installation.
- <sup>23</sup> N and I Mounting Types only. I Mounting requires external brackets.
- <sup>24</sup> N Mounting Type only.
- <sup>25</sup> N Mounting Type only.



# 4DR tunable WHITE 4.5" Downlight – Round

## FEATURES

### TrimLock®

- Innovative TrimLock reflector retention system ensures trim remains flush with ceiling plane
- Support human-centric design with adaptive, individualized lighting using tunable white light
- Beam angles ranging from 10° narrow to 65° wide for tailored performance
- Die cast trim choices include flush, regressed or angled lens
- Contemporary design provides glare-free illumination for a soft ceiling appearance
- Fully room-side accessible
- New construction mounting pan, IC-rated, or pan-less remodel kit available
- Sloped adapter accommodates vaulted ceilings
- Open reflector with nine finishes complements any interior style
- Optional non-conductive lens for shower applications
- IP65-rated die-cast trim includes easy-to-clean flush lens

## SPECIFICATIONS

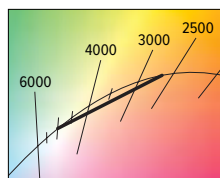
- HOUSING** – Die-cast aluminum trim housing with forged aluminum heat sink. Galvanized steel splice compartment with driver mounting plate/enclosure. Swing-out mounting arms field adjust for ceiling thickness from 1/2" – 2-1/4".
- TRIMLOCK** – Innovative TrimLock reflector retention system ensures the trim remains flush with the ceiling plane.
- OPEN REFLECTOR** – Low-iridescent anodized aluminum. Clear semi-specular finish standard.
- LENSED TRIM** – Die-cast aluminum frame with micro-prismatic, acrylic lens.
- ELECTRICAL** – High-performance Class 2 LED array. Modular quick-connect plug for easy field-connection of LED light assembly to driver. Reported L70>50,000 hours. Tunable White products use LEDs of multiple CCTs and may produce a perceptibly different shade of white from single-CCT products at the same CCT. All CCTs are within 3 MacAdam ellipses.
- MOUNTING** – Recessed. 20 ga. galvanized steel mounting pan for new construction or IC-rated enclosure. Remodel kit option includes receiver bracket hardware.

- LISTINGS** –
  - cCSAus conforms to UL STD 1598; Certified to CAN/CSA STD C22.2 No. 250.0 for dry and damp locations. LED light assembly conforms to UL 2108 for remote installation.
  - Suitable for wet location under covered ceiling when specified with WET/CC or TD options.
  - IC-rated for direct contact with insulation when specified with I Mounting Type.
  - City of Chicago Environmental Air approved when specified with CP option.
  - Complies with ASTM-E283 when specified with ATH option.
  - RoHS compliant.
  - Complies with the Buy American Act and other federal regulations. Request certification at [hew.com/baa](http://hew.com/baa).
- WARRANTY** – 5-year limited warranty, see [hew.com/warranty](http://hew.com/warranty).

## FIXTURE PERFORMANCE DATA

	DISTRIBUTION	WATTAGE	OPEN REFLECTOR TRIM TYPE		FLUSH LENS TRIM TYPE		REGRESSED LENS TRIM TYPE	
			DELIVERED LUMENS	EFFICACY (lm/W)	DELIVERED LUMENS	EFFICACY (lm/W)	DELIVERED LUMENS	EFFICACY (lm/W)
L13	W	14.6	1283	88	1029	71	1040	71
	M	14.6	1281	88	1148	79	1149	79
	N	14.6	1283	88	1175	81	1181	81
L22	W	24.0	2289	95	1781	74	1799	75
	M	24.0	2198	92	2020	84	2026	84
	N	24.0	2097	87	2033	85	2043	85

- Distribution will also be affected, consult factory.
  - Use multiplier when specified with O Trim Type.
- Photometrics tested in accordance with IESNA LM-79. Results shown are based on 25°C ambient temperature.
  - Wattage shown is based on 120V input.
  - Results based on 4000K, 80 CRI, actual lumens may vary +/-5%
  - To calculate lumen output in emergency mode, multiply the battery wattage by the efficacy.
  - Use multiplier tables to calculate additional options.



### BEAM ANGLE

	TRIM TYPE		
	OPEN	FLUSH	REGRESSED
W	65°	50°	50°
M	45°	35°	30°
N	10°	25°	25°

## MULTIPLIER TABLES

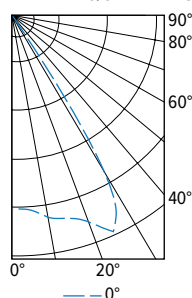
COLOR TEMPERATURE		
CCT	LUMENS	WATTS
2700K	0.83	1.03
3000K	1.00	1.00
3500K	0.99	0.99
4000K	1.00	1.00
5000K	0.98	1.03

	REFLECTOR FINISH	
	CATALOG NUMBER	CONVERSION FACTOR
O TRIM	CS	1.00
	SG <sup>1</sup>	0.92
	GD	0.93
	CG	0.96
	PW	0.86
	SPC	1.02
	RG	0.88
R TRIM	WH <sup>1</sup>	0.89
	BL <sup>1</sup>	0.47
	WH	1.00
	CS	0.98
	BL	0.79

TRIM	
CATALOG NUMBER	CONVERSION FACTOR
S	0.85
AD	0.85
PD	0.85
TD	0.75
WET/CC <sup>2</sup>	0.85

## PHOTOMETRY

4DR-TL-L13/8TW-DIM-UNV-OW-OF-CS Total Luminaire Output: 1283 lumens; 14.6 Watts | Efficacy: 87.9 lm/W | 80.0 CRI; 4037K CCT



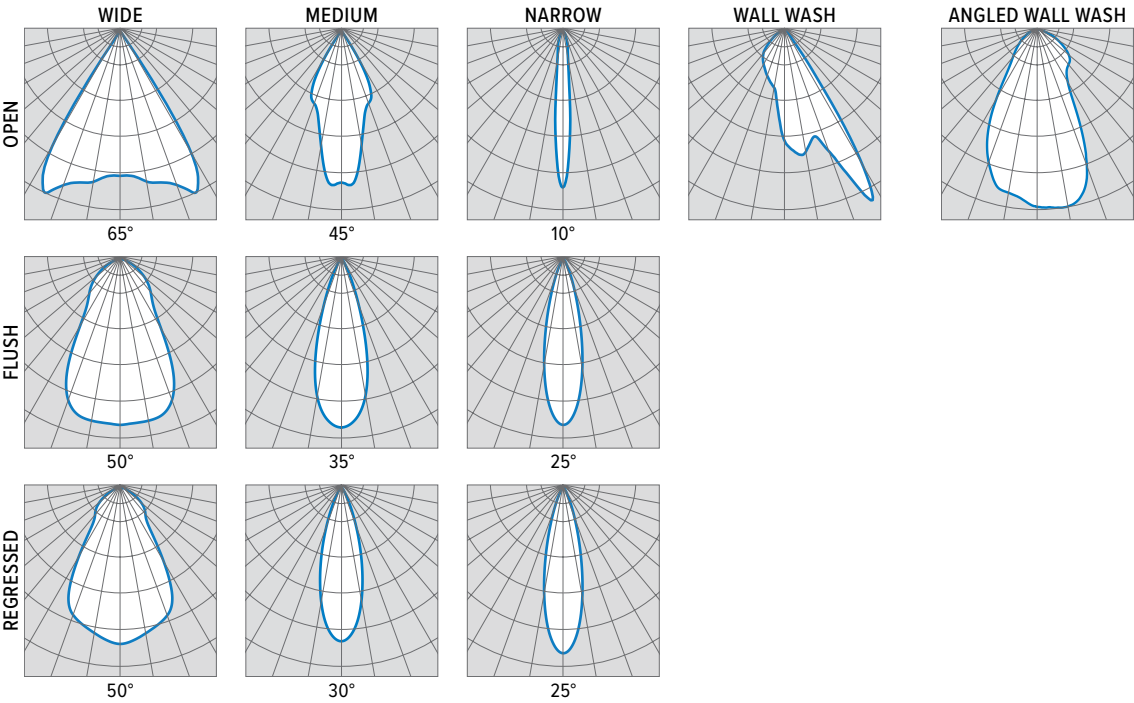
	VERTICAL ANGLE	HORIZONTAL ANGLE	ZONAL LUMENS
		0°	
CANDLEPOWER DISTRIBUTION	0	1158	
	5	1193	114
	15	1254	356
	25	1428	660
	35	196	124
	45	28	22
	55	7	6
	65	1	1
	75	0	0
	85	0	0
	90	0	

	ZONE	LUMENS	% FIXTURE
LUMEN SUMMARY	0 - 40	1254	98
	0 - 60	1283	100
	0 - 90	1283	100
	0-180	1283	100



# 4DR tunable WHITE

## 4.5" Downlight – Round



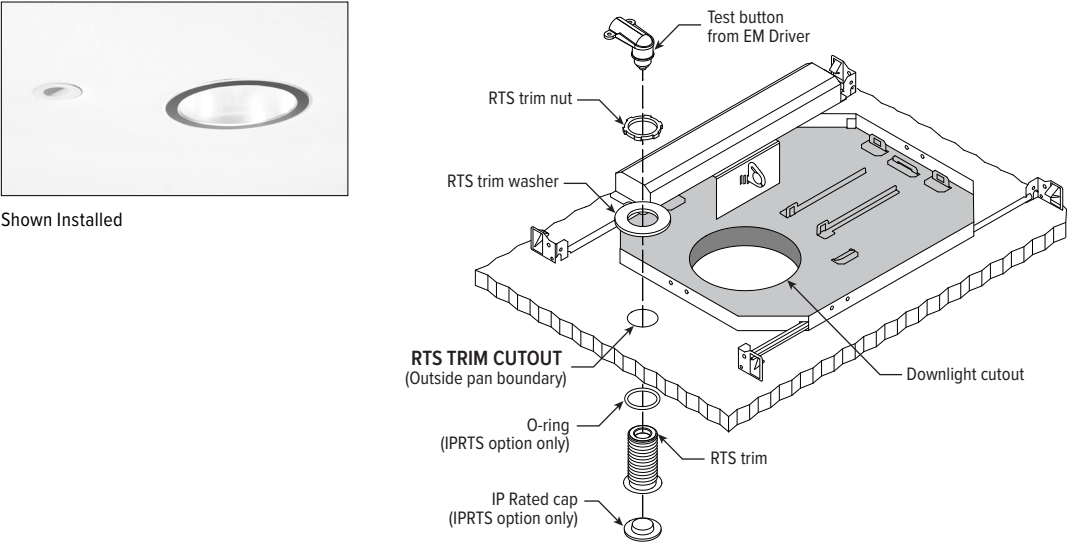
### EMERGENCY BATTERY OPTIONS

Additional limitations apply, see page 1. Specify CEC in the option code when California Energy Commission regulations are required.

CATALOG NUMBER	DESCRIPTION
EM/7W	7-watt emergency battery <sup>[1]</sup>
EM/7W/RTS	7-watt emergency battery with regressed test switch <sup>[2]</sup>
EM/7W/IPRTS	7-watt emergency battery with IP65 rated regressed test switch
EM/10W	10-watt emergency battery <sup>[1]</sup>
EM/10W/RTS	10-watt emergency battery with regressed test switch <sup>[2]</sup>
EM/10W/IPRTS	10-watt emergency battery with IP65 rated regressed test switch

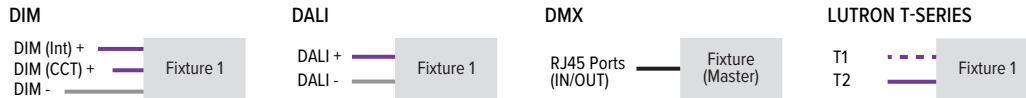
<sup>1</sup> Not available with S Trim Type or IP Option.
 <sup>2</sup> Not available with S Trim Type, IP or WET/CC Options.

### REGRESSED TEST SWITCH DETAILS



# 4DR tunable WHITE 4.5" Downlight – Round

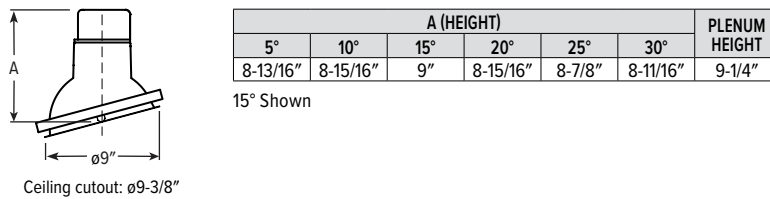
## CONTROL DETAILS



## TRIMLOCK DETAILS



## SLOPED CEILING ADAPTOR DETAILS

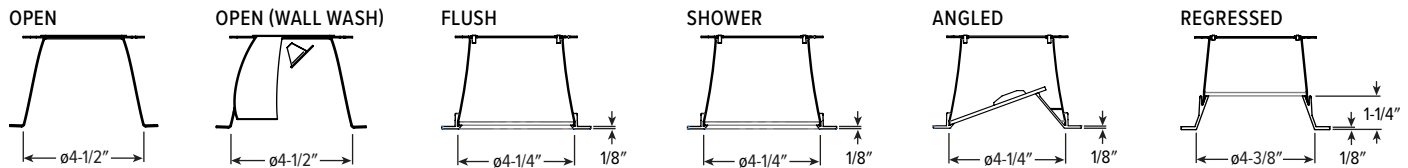


## APERTURE ADAPTOR ORDERING INFO

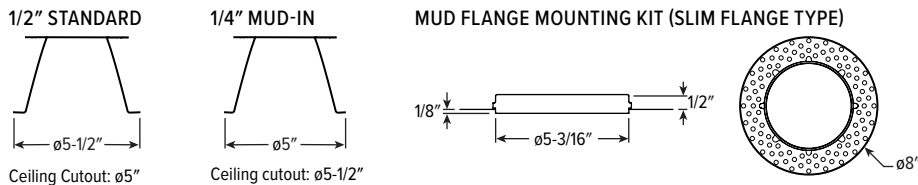
ORDERING EXAMPLE: 4DR - GR - 0575 - WHT			
SERIES	CATALOG NUMBER	CEILING CUTOUT	FINISH
4AR 6AR 4DR 6DR 4DS 6DS 4PR 6PR 4PS 6PS 8DR	GR	Specify ceiling cutout in 1/8" increments. Example: 5.75" = <b>0575</b> See Kit Components for application limits.	CS Clear semi-specular powder coat WH White texture powder coat BL Black texture powder coat

For use with remodel downlights. Additional finishes available, consult factory.  
For limitations and instructions, see [hew.com/aperture-adaptor.pdf](http://hew.com/aperture-adaptor.pdf)

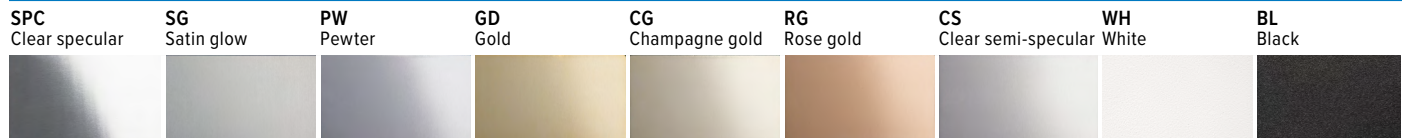
## TRIM TYPE DETAILS



## FLANGE TYPE DETAILS



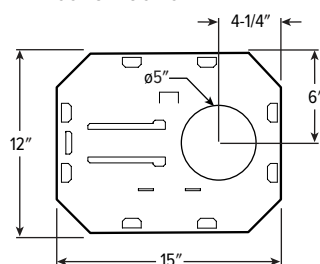
## REFLECTOR FINISH DETAILS



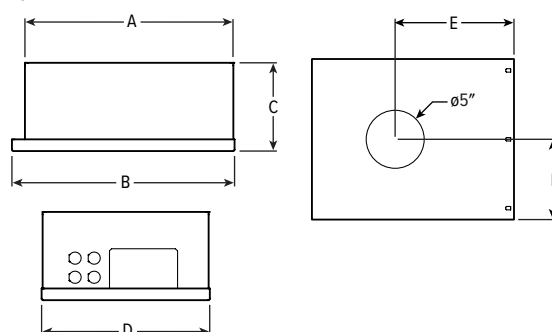
# 4DR tunable **WHITE** 4.5" Downlight – Round

## MOUNTING TYPE DETAILS

### NEW CONSTRUCTION

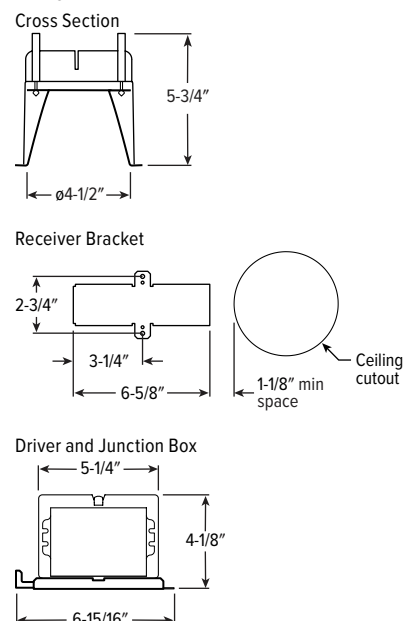


### IC-RATED



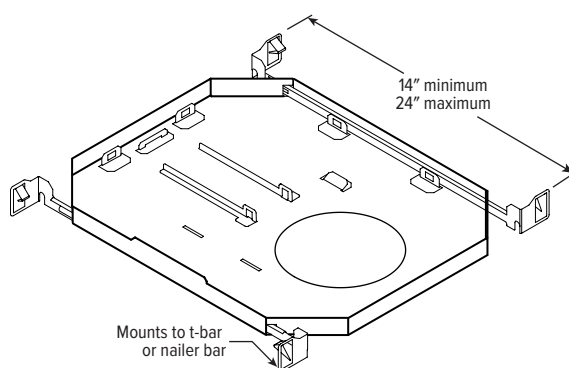
LUMENS	LENGTH					
	A	B	C	D	E	F
L13	15-3/16"	16"	6-3/8"	12-1/8"	9-1/2"	6-1/16"
L22	16-5/8"	17-1/2"	7-7/8"	14"	10-1/4"	7"

### REMODEL

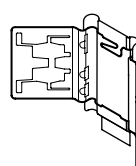


## MOUNTING HARDWARE DETAILS

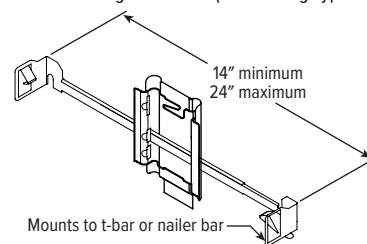
### F1 Integral 2-position fixed pan bracket, universal bar hanger included



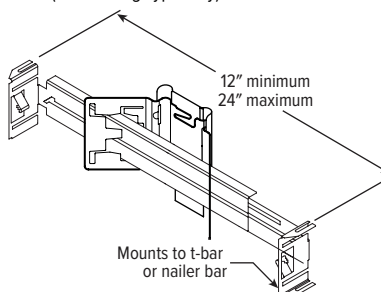
### BA1 Adjustable butterfly pan bracket, bar hanger not included (N Mounting Type only)



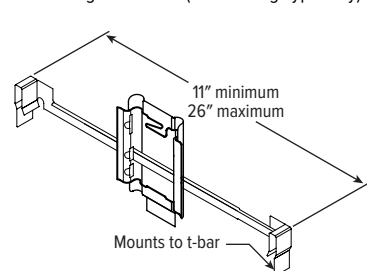
### CA1 Adjustable caterpillar pan bracket, universal bar hanger included (N Mounting Type only)



### BA2 Adjustable butterfly pan bracket, heavy-duty universal bar hanger included (N Mounting Type only)



### CA2 Adjustable caterpillar pan bracket, t-bar hanger included (N Mounting Type only)



### F1 with I Mounting Type

