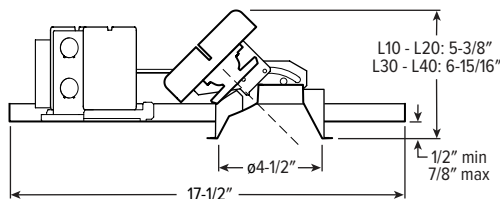


4AR^{LED} 4.5" Adjustable Downlight – Round



CATALOG #: _____

TYPE: _____

PROJECT: _____

NEW CONSTRUCTION AND REMODEL

ORDERING EXAMPLE: 4AR - L20/835 - OPTIONS - CONTROL/DIM - UNV - OW - OF - CS - TRIM OPTIONS - N - F1



HOUSING

| SERIES | LUMENS ^[1] | CRI | CCT | OPTIONS | CONTROL | DRIVER | VOLTAGE |
|--------|---|-----------------------------|--|---|--|--|---|
| 4AR | L10 1,000lm L15 1,500lm L20 2,000lm L30 3,000lm L40 4,000lm | 8 80 9 90 ^[2] | 27 2700K 30 3000K 35 3500K 40 4000K 50 5000K | See page 4 for EMERGENCY BATTERY OPTIONS. ATH Airtight construction ^[3] CP Chicago plenum (CCEA) ^[4] F Fuse kit SDT Stepdown transformer ^[5] | See page 6 for ADDITIONAL CONTROL/DRIVER OPTIONS. - None AVI-LVFA Avi-on wireless fixture control ^[6] AWNRLutron Athena wireless node integral fixture control, RF only ^[7] | See page 6 for ADDITIONAL CONTROL/DRIVER OPTIONS. DIM Dimming driver, 0-10V DIM1 1% Dimming driver, 0-10V DA Driver with 12V auxiliary power, without external dimming wires ^[8] | UNV 120-277V 347 347V ^[9] |

TRIM^[10]

| TRIM TYPE | DISTRIBUTION ^[11] | FLANGE TYPE | REFLECTOR FINISH | TRIM OPTIONS |
|---|---|--|---|---|
| O Open reflector L Flush lens A Angled lens | W Wide 45° Open 40° Flush 30° Angled | OF 1/2" standard flange SF 1/4" mud-in flange ^[12] | Open trim types CS Clear semi-specular anodize WH White texture powder coat BL Black texture powder coat | MWT Textured white trim flange ^[13] AD Diffuse acrylic lens ^[14] PD Diffuse 1/8" polycarbonate lens ^[15] WET/CC Wet location, covered ceiling listed ^[16] AM Anti-microbial ^[17] |
| | M Medium 30° Open 30° Flush 25° Angled | | Lens trim types CS Clear semi-specular powder coat WH White texture powder coat BL Black texture powder coat | |
| | N Narrow 20° Open 25° Flush 25° Angled | | | |

MOUNTING

| MOUNTING TYPE ^[18] | MOUNTING HARDWARE ^[19] |
|---|--|
| N Open pan for new construction I IC-rated enclosure for new construction ^[20] R Remodel kit ^[21] | F1 Factory-installed 2-position fixed pan bracket, universal bar hanger included ^[22] BA1 Adjustable butterfly pan bracket, bar hanger not included ^[23] CA1 Adjustable caterpillar pan bracket, universal bar hanger included ^[24] |

NOTES

- Lumen output based on O trim type, N distribution and CS finish, 3500K/80CRI. Actual lumens may vary +/-5%, see page 2 for FIXTURE PERFORMANCE DATA.
- Extended lead times may apply. Consult factory for availability.
- I Mounting Type required.
- I Mounting Type required.
- May be required for 347V, see product builder at hew.com/product-builder.
- DA Driver only. See page 6 for AVI-ON BLUETOOTH WIRELESS CONTROL DETAILS.
- DA Driver only.
- Avi-on and Lutron Athena Controls only.
- Not available with EM batteries, DA or DMX Drivers.

- Trim ships separately.
- Beam angle based on CS or WH reflector finish.
- For use with mud-in plaster construction only, supplied with mud flange installation kit. See page 3 for FLANGE TYPE DETAILS. Not available with ATH option.
- Not available with WH Reflector Finish or L Trim Type.
- L and A Trim Types only. W distribution only.
- L and A Trim Types only. W distribution only.
- L and A Trim Types only. Not available with PD trim option.
- WH and BL Reflector Finishes only.
- Mounting hardware required (N and I only), ordered separately, see MOUNTING HARDWARE ordering info. See page 5 for MOUNTING TYPE DETAILS.

- Additional mounting hardware options available. See page 5 for MOUNTING HARDWARE DETAILS.
- Not available with L30 and L40 lumen packages. Not available with EM batteries.
- Also used in new construction sheetrock ceilings. Pan-less installation.
- N and I Mounting Types only. Universal bar hanger ships uninstalled. I Mounting requires external brackets.
- N Mounting Type only.
- N Mounting Type only.



4AR^{LED} 4.5" Adjustable Downlight – Round

FEATURES

- Adjustable aim with 0° - 45° tilt and 360° rotation
- Beam angles ranging from 20° narrow to 45° wide for tailored performance
- 4 inch aperture is unobtrusive in small scale spaces
- Contemporary design provides glare-free illumination for a soft ceiling appearance
- Choice of open reflector or die-cast lensed trims to complement interior style
- Etched degree markers and directional indicator make it simple to fine-tune the illumination angle
- Spring clip retention system eliminates trim sag
- Fully room-side accessible
- Wireless in-fixture control solutions available

SPECIFICATIONS

- HOUSING** – Die-cast aluminum spun and stamped articulating mechanism with forged aluminum heat sink. Galvanized steel splice compartment with driver mounting plate/enclosure. Mounting clips allow for ceiling thickness from 1/2" - 7/8".
- OPEN REFLECTOR** – Low-iridescent anodized aluminum. Clear semi-specular finish standard.
- LENSED TRIM** – Die-cast aluminum frame with micro-prismatic, acrylic lens.
- ELECTRICAL** – High-performance Class 2 C.O.B. LED array. Modular quick-connect plug for easy field-connection of LED light assembly to driver. Reported L70>55,000 hours. Reported L90>55,000 hours. Estimated L70 = 200,000 hours.
- MOUNTING** – Recessed. 20 ga. galvanized steel mounting pan for new construction or IC-rated enclosure. Remodel kit option includes receiver bracket hardware. N and R mounting types for use in non-fire rated installations only. Minimum 24" O.C. marked spacing required for L30 and L40 lumen packages.
- LISTINGS** –
 - cCSAus conforms to UL STD 1598; Certified to CAN/CSA STD C22.2 No. 250.0 for dry and damp locations. LED light assembly conforms to UL 2108 for remote installation.
 - Suitable for wet location under covered ceiling when specified with WET/CC option.
 - IC-rated for direct contact with insulation when specified with I Mounting Type.
 - City of Chicago Environmental Air approved when specified with CP option.
 - Complies with ASTM-E283 when specified with ATH option.
 - RoHS compliant.
 - Complies with the Buy American Act and other federal regulations. Request certification at hew.com/baa.
- WARRANTY** – 5-year limited warranty, see hew.com/warranty.

FIXTURE PERFORMANCE DATA

OPEN REFLECTOR TRIM TYPE

| | DISTRIBUTION | DELIVERED LUMENS | WATTAGE | EFFICACY (lm/W) |
|-----|--------------|------------------|---------|-----------------|
| L10 | W | 690 | 12.1 | 57 |
| | M | 946 | 12.1 | 78 |
| | N | 1014 | 12.1 | 84 |
| L15 | W | 1041 | 17.2 | 61 |
| | M | 1427 | 17.2 | 83 |
| | N | 1529 | 17.2 | 89 |
| L20 | W | 1380 | 24.2 | 57 |
| | M | 1892 | 24.0 | 79 |
| | N | 2028 | 24.0 | 85 |
| L30 | W | 1532 | 36.9 | 42 |
| | M | 2497 | 36.9 | 68 |
| | N | 2785 | 36.9 | 76 |
| L40 | W | 2043 | 49.0 | 42 |
| | M | 3330 | 49.0 | 68 |
| | N | 3714 | 49.0 | 76 |

FLUSH LENS TRIM TYPE

| | DISTRIBUTION | DELIVERED LUMENS | WATTAGE | EFFICACY (lm/W) |
|-----|--------------|------------------|---------|-----------------|
| L10 | W | 684 | 12.1 | 57 |
| | M | 915 | 12.1 | 76 |
| | N | 953 | 12.1 | 79 |
| L15 | W | 1031 | 17.2 | 60 |
| | M | 1381 | 17.2 | 80 |
| | N | 1438 | 17.2 | 84 |
| L20 | W | 1368 | 24.0 | 57 |
| | M | 1831 | 24.0 | 76 |
| | N | 1907 | 24.0 | 80 |
| L30 | W | 2091 | 36.9 | 57 |
| | M | 2718 | 36.9 | 74 |
| | N | 2701 | 36.9 | 76 |
| L40 | W | 2788 | 49.0 | 57 |
| | M | 3625 | 49.0 | 74 |
| | N | 3602 | 49.0 | 74 |

ANGLED LENS TRIM TYPE

| | DISTRIBUTION | DELIVERED LUMENS | WATTAGE | EFFICACY (lm/W) |
|-----|--------------|------------------|---------|-----------------|
| L10 | W | 486 | 12.1 | 40 |
| | M | 712 | 12.1 | 59 |
| | N | 859 | 12.1 | 71 |
| L15 | W | 733 | 17.2 | 43 |
| | M | 1074 | 17.2 | 62 |
| | N | 1295 | 17.2 | 75 |
| L20 | W | 972 | 24.0 | 41 |
| | M | 1425 | 24.0 | 59 |
| | N | 1718 | 24.0 | 80 |
| L30 | W | 1528 | 36.9 | 41 |
| | M | 2067 | 36.9 | 56 |
| | N | 2313 | 36.9 | 76 |
| L40 | W | 2037 | 49.0 | 42 |
| | M | 2756 | 49.0 | 56 |
| | N | 3085 | 49.0 | 63 |

MULTIPLIER TABLES

| | COLOR TEMPERATURE | |
|--------|-------------------|-------------------|
| | CCT | CONVERSION FACTOR |
| 80 CRI | 2700K | 0.92 |
| | 3000K | 0.98 |
| | 3500K | 1.00 |
| | 4000K | 1.01 |
| | 5000K | 1.02 |
| 90 CRI | 2700K | 0.76 |
| | 3000K | 0.79 |
| | 3500K | 0.82 |
| | 4000K | 0.84 |
| | 5000K | 0.88 |

| OPEN REFLECTOR FINISH | |
|-----------------------|-------------------|
| CATALOG NUMBER | CONVERSION FACTOR |
| CS | 1.00 |
| WH | 0.89 |
| BL | 0.79 |

| TRIM | |
|-----------------|-------------------|
| CATALOG NUMBER | CONVERSION FACTOR |
| AD ¹ | 0.85 |
| PD ¹ | 0.85 |

- ¹ Distribution will also be affected, consult factory.
- Photometrics tested in accordance with IESNA LM-79. Results shown are based on 25°C ambient temperature.
 - Wattage shown is based on 120V input.
 - Results based on 3500K/80 CRI, 0° tilt, actual lumens may vary +/-5%.
 - To calculate lumen output in emergency mode, multiply the battery wattage by the efficacy.
 - Use multiplier table to calculate additional options.

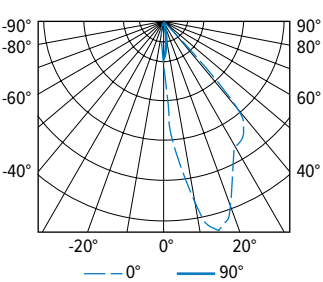


4AR LED

4.5" Adjustable Downlight – Round

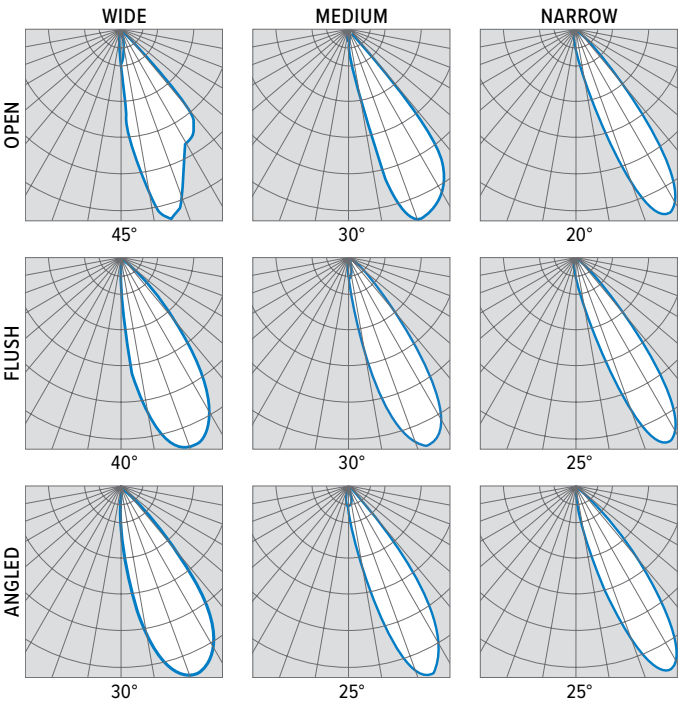
PHOTOMETRY

4AR-L20/835-DIM-UNV-OW-OF-CS (25° tilt) Report #: 20446; 05/21/18 | Total Luminaire Output: 1368 lumens; 24.2 Watts | Efficacy: 56.6 lm/W | 81.7 CRI; 3628K CCT

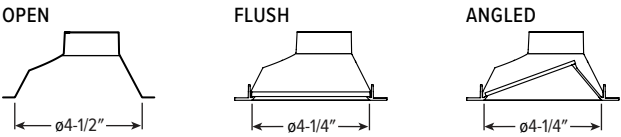


| CANDLEPOWER DISTRIBUTION | VERTICAL ANGLE | HORIZONTAL ANGLE | | | | | ZONAL LUMENS |
|--------------------------|----------------|------------------|------|-----|------|------|--------------|
| | | 0° | 45° | 90° | 135° | 180° | |
| | 0 | 808 | 808 | 808 | 808 | 808 | |
| | 5 | 2450 | 1718 | 670 | 277 | 200 | 95 |
| | 15 | 4432 | 2421 | 259 | 63 | 41 | 323 |
| | 25 | 3338 | 2205 | 66 | 17 | 15 | 414 |
| | 35 | 2889 | 1016 | 12 | 8 | 11 | 469 |
| | 45 | 597 | 31 | 5 | 4 | 3 | 67 |
| | 55 | 6 | 0 | 0 | 0 | 3 | 1 |
| | 65 | 1 | 0 | 0 | 0 | 0 | 0 |
| | 75 | 0 | 0 | 0 | 0 | 0 | 0 |
| | 85 | 0 | 0 | 0 | 0 | 0 | 0 |
| | 90 | 0 | 0 | 0 | 0 | 0 | 0 |

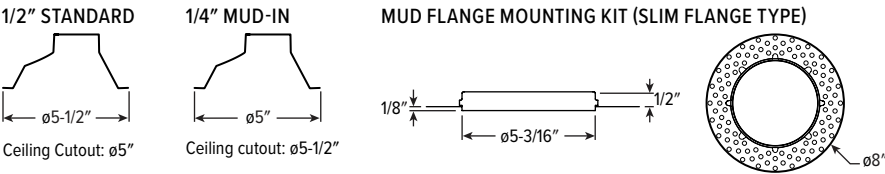
| LUMEN SUMMARY | ZONE | LUMENS | % FIXTURE |
|---------------|---------|--------|-----------|
| | 0 - 30 | 832 | 61 |
| | 0 - 40 | 1301 | 95 |
| | 0 - 60 | 1368 | 100 |
| | 0 - 90 | 1368 | 100 |
| | 0 - 180 | 1368 | 100 |



TRIM TYPE DETAILS



FLANGE TYPE DETAILS



4AR^{LED} 4.5" Adjustable Downlight – Round

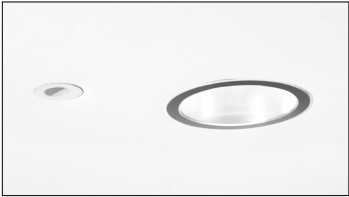
EMERGENCY BATTERY OPTIONS

Additional limitations apply, see page 1. Specify CEC in the option code when California Energy Commission regulations are required.

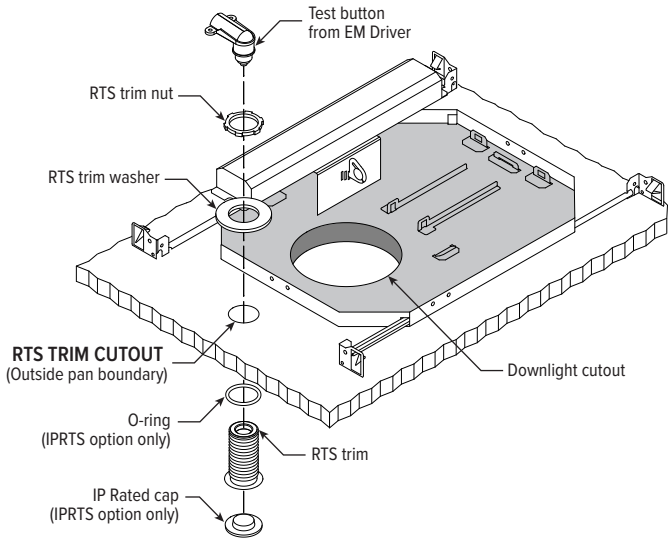
| CATALOG NUMBER | DESCRIPTION |
|----------------|---|
| EM/7W | 7-watt emergency battery |
| EM/7W/RTS | 7-watt emergency battery with regressed test switch ¹ |
| EM/7W/IPRTS | 7-watt emergency battery with IP65 rated regressed test switch |
| EM/10W | 10-watt emergency battery |
| EM/10W/RTS | 10-watt emergency battery with regressed test switch ¹ |
| EM/10W/IPRTS | 10-watt emergency battery with IP65 rated regressed test switch |

¹ Not available with WET/CC Option.

REGRESSED TEST SWITCH DETAILS



Shown Installed



REFLECTOR FINISH DETAILS



APERTURE ADAPTOR ORDERING INFO

| ORDERING EXAMPLE: 4DR - GR - 0575 - WHT | | | |
|--|----------------|--|---|
| SERIES | CATALOG NUMBER | CEILING CUTOUT | FINISH |
| 4AR 6AR 4DR 6DR 4DS 6DS 4PR 6PR 4PS 6PS 8DR | GR | Specify ceiling cutout in 1/8" increments. Example: 5.75" = 0575 See Kit Components for application limits. | CS Clear semi-specular powder coat WH White texture powder coat BL Black texture powder coat |

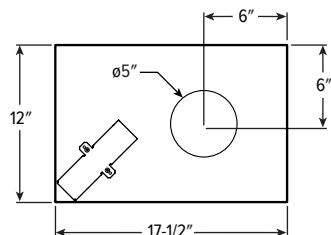
For use with remodel downlights. Additional finishes available, consult factory.
For limitations and instructions, see hew.com/aperture-adaptor.pdf



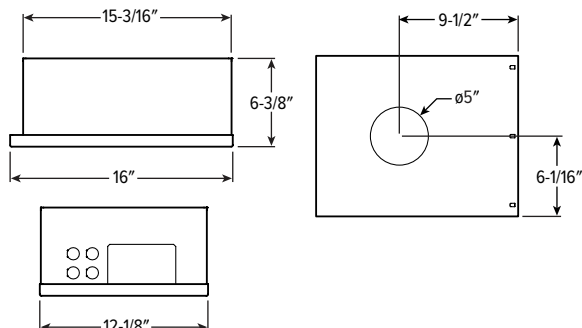
4AR^{LED} 4.5" Adjustable Downlight – Round

MOUNTING TYPE DETAILS

NEW CONSTRUCTION

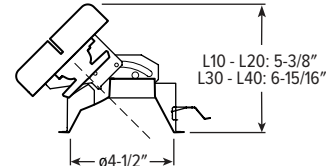


IC-RATED

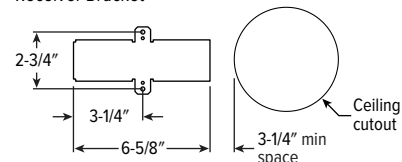


REMODEL

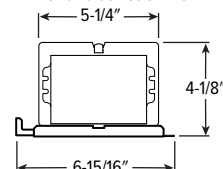
Cross Section



Receiver Bracket

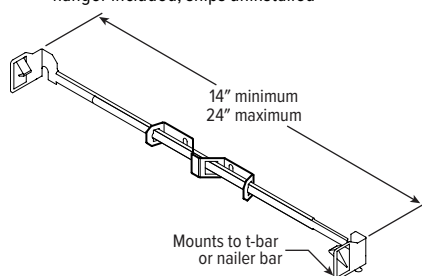


Driver and Junction Box

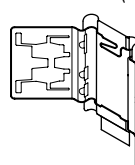


MOUNTING HARDWARE DETAILS

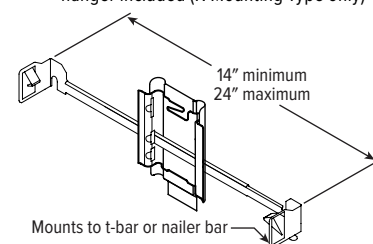
F1 Factory-installed 2-position fixed pan bracket, universal bar hanger included, ships uninstalled



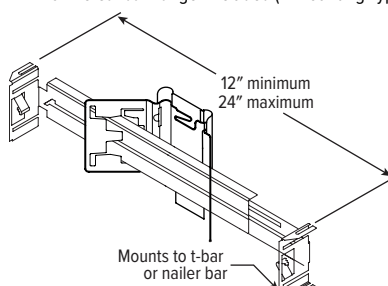
BA1 Adjustable butterfly pan bracket, bar hanger not included (N Mounting Type only)



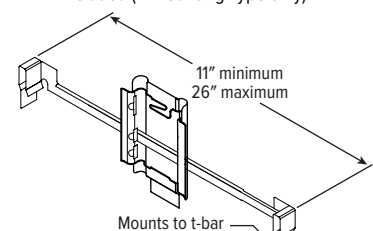
CA1 Adjustable caterpillar pan bracket, universal bar hanger included (N Mounting Type only)



BA2 Adjustable butterfly pan bracket, heavy-duty universal bar hanger included (N Mounting Type only)



CA2 Adjustable caterpillar pan bracket, t-bar hanger included (N Mounting Type only)



F1 with I Mounting Type



4AR^{LED} 4.5" Adjustable Downlight – Round

AVI-ON BLUETOOTH WIRELESS CONTROL DETAILS

FEATURES

Simple

- Gateway-free distributed control
- Factory pre-commissioning
- Contractor friendly installation
- Occupancy/vacancy/daylight sensing

Scalable

- Virtually unlimited network size
- Spans small offices to large warehouses
- Flexible control strategies

Secure

- Optional cloud connectivity
- UL IoT platinum security rating
- DLC 5.0 compliant

COMMISSIONING & INSTALLATION TOOLS

Avi-on mobile apps provide intuitive, quick installation and commissioning. Pro tools are available to qualified installers. Live commissioning training and on-site or remote support by Avi-on must be ordered separately through Avi-on.



Commissioning
Mobile App

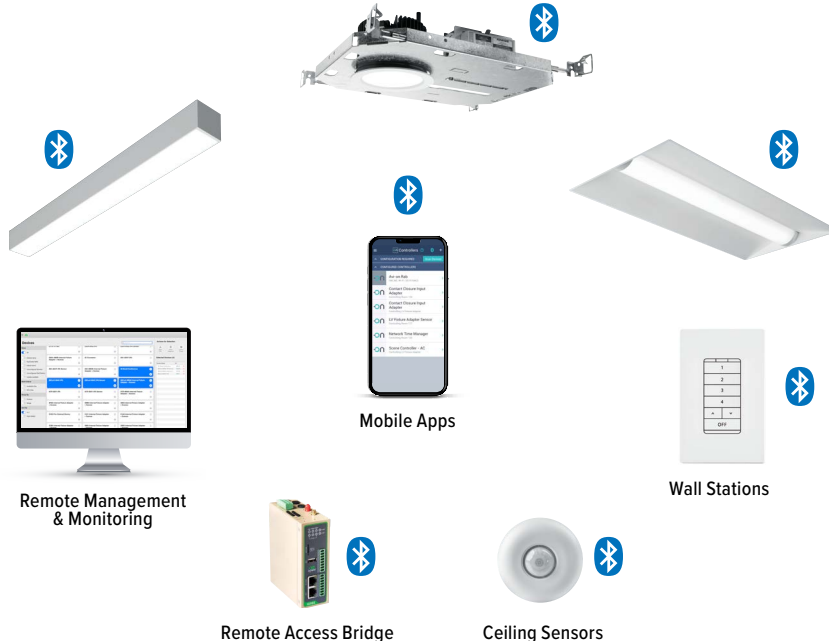


Zone Scanner
Web App



Commissioning
Pro App

SYSTEM COMPONENTS



The Bluetooth® word mark and logos are registered trademarks owned by Bluetooth SIG, Inc. and any use of such marks by Avi-on is under license. Other trademarks and trade names are those of their respective owners.

ACCESSORIES

| WALL STATIONS | |
|---------------|--|
| AVI-2401AC | Scene controller - numbered 1-4, 120-277VAC |
| AVI-2402BAT | Scene controller - numbered 1-4, battery powered |
| AVI-2401AC-2 | Dimmer with presets - percentages, 120-277VAC |
| AVI-2402BAT-2 | Dimmer with presets - percentages, battery powered |
| AVI-2401AC-3 | On/off/dimming, 120-277VAC |
| AVI-2402BAT-3 | On/off/dimming, battery powered |

| NETWORK | |
|-----------------------|--|
| AVI-RAB-LTE | Remote access bridge – LTE connection |
| AVI-2001RAB-01-C | Remote access bridge – Wifi connection |
| AVI-KIT-NTM | Network time manager with battery backup |
| CEILING MOUNT SENSORS | |
| AVI-KIT-SEN-DUCM | PIR motion and ultrasonic sensor kit |
| AVI-KIT-SEN-ICM | PIR motion and photocell sensor kit |

For load controllers and additional accessory info, see hew.com/avi-on

ADDITIONAL CONTROL/DRIVER OPTIONS

Lumen restrictions apply: L30 max for DMX driver and Lutron drivers, L40 max for DIM LINE driver. R mounting type requires top access with DMX controls. R Mounting Type not available with FCJS controls. R Mounting Type requires 12" minimum plenum depth when specified with VRF/DBI controls. 347V may require stepdown transformer, see product builder at hew.com/product-builder. I Mounting Type not available with Lutron controls.

| CATALOG NUMBER | DESCRIPTION |
|----------------|--|
| AVI-LVFA/DA | Avi-on wireless fixture control for use with driver with 12V auxiliary power |
| VRF/DBI/LDE1 | Lutron Vive integral fixture control, RF only (DFCSJ-OEM-RF) and digital link interface, with Lutron Hi-lume 1% EcoSystem dimming LED driver |
| FCJS/DIM | Lutron Vive PowPak wireless fixture control with dimming driver |
| FCJS/DIM1 | Lutron Vive PowPak wireless fixture control with 1% dimming driver |
| DIM | Dimming driver prewired for 0-10V low voltage applications |
| DIM1 | 1% dimming driver prewired for 0-10V low voltage applications |
| DIM LINE | Line voltage dimming driver (TRIAC and ELV compatible at 120V only) |
| DALI | DALI dimming driver |
| DMX | 0.1% dimming driver for DMX controls |
| LDE1 | Lutron Hi-lume 1% EcoSystem dimming LED driver |

