

Williams' DIL – Finally, Direct/ Indirect Lighting That Offers A Cure For The Common Bug.



Features
a clear acrylic
lensed and gasketed
door with fully enclosed
spring-loaded cam latches.

DIL

THE DIRECT/INDIRECT WITH A SHIELD.

Finally. An attractive, durable Direct/Indirect that—while not completely immune—helps cure the common problem of bugs and debris collecting in the fixture. The Williams DIL is highly recommended for hospitals, schools, and high traffic applications where maintenance is an issue. Common side effects include pleasing indirect illumination and reduced intrusion of foreign objects.

Frequently prescribed as a replacement for the standard troffer, the DIL features a gasketed lensed door and fully enclosed spring-loaded cam latches not commonly found on a recessed Direct/Indirect fixture. The DIL boasts the same durable housing design as the EP, but with the internal diffuser options of our Direct/Indirect Series. Available in T5, T8, and twin-tube lamps, the DIL is the perfect prescription for your next Direct/Indirect project.

Ask your Williams agent if the DIL is right for you.



FLUORESCENT LIGHTING



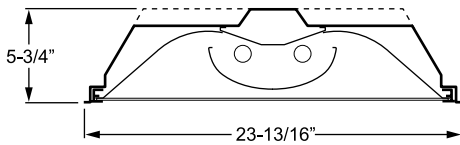
DIL 2'x4' shown with AD diffuser

FEATURES:

- ▶ Transparent lensed door provides a barrier between the room and the perforated diffuser to discourage vandals and minimize contaminants. Double or triple gasketing options available.
- ▶ Available with a variety of architectural diffuser options designed to complement the full DI Series.
- ▶ Fully enclosed spring-loaded cam latches allow years of hassle-free maintenance.
- ▶ T-slot steel hinge allows reversible hinging and latching and ensures positive retention when door is opened.
- ▶ 5-3/4" deep housing with raised ballast wireway.
- ▶ Deep reinforcement ribs provide added strength.
- ▶ All parts painted after fabrication to facilitate installation, increase efficiency, and inhibit corrosion.
- ▶ This fixture is proudly made in the USA.

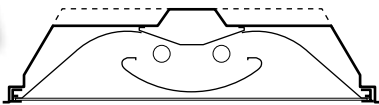
SPECIFICATIONS:

- ▶ HOUSING – 22-gauge die-formed C.R.S.
- ▶ DOOR FRAME & LENS – Transparent acrylic lens, .118" thick, mounted in .050" thick extruded aluminum door frame, flat with mitered corners.
- ▶ REFLECTOR – Precision die-formed C.R.S. with highly reflective, non-glare matte white polyester powder coated finish.
- ▶ SHIELDING – Die-formed C.R.S., 50% open perforation, white powder coated round diffuser with matte white acrylic overlay.
- ▶ FINISH – 92% minimum average reflective white polyester powder coat bonded to phosphate-free, multi-stage pretreated metal.
- ▶ ELECTRICAL – Electronic ballast standard, rated Class P.
- ▶ MOUNTING – NEMA Type "G" standard. NEMA Type "F" available.
- ▶ LABELS – UL/CUL listed as recessed luminaire suitable for dry or damp locations.

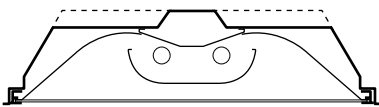


DIFFUSER OPTIONS

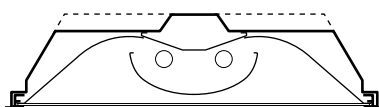
AD (acrylic diffuser)



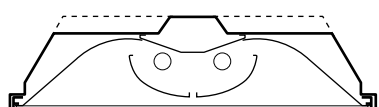
WP (perforated flat diffuser)



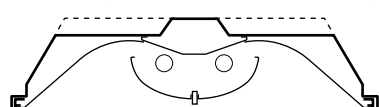
WPR (perforated round diffuser)



WPR/SPLIT (perforated round split diffuser)



WPR/ACRY/CLR (perforated round diffuser with center acrylic)



UP TO 87.1% EFFICIENT*

QUANTITY ESTIMATOR

Number of Fixtures Required - Item #: **DILG-S24-232-WPR**

Room Size	± 35 fc.	± 50 fc.	± 70 fc.
15' x 15' (225 sq. ft.)	4	5	7
30' x 30' (900 sq. ft.)	11	15	21
50' x 50' (2500 sq. ft.)	26	37	52

Calculations based on standard reflectance of 80/50/20 and a light loss factor of .85 with a 9'-0" ceiling height.

* 2X4 2-Lamp T8 photometric results.

